

LEED-ND: Sustainability Metrics



Journey

- Overview
- Application
- Examples:
 - El Paso, TX
 - Lakewood, CO
- Interactive Discussion

LEED for Neighborhood Development (LEED-ND)



CONGRESS
FOR THE
NEW
URBANISM



Joint effort of the US Green Building Council, the Congress for New Urbanism, and the Natural Resources Defense Council

US Green Building Council (USGBC)



Congress for the New Urbanism (CNU)



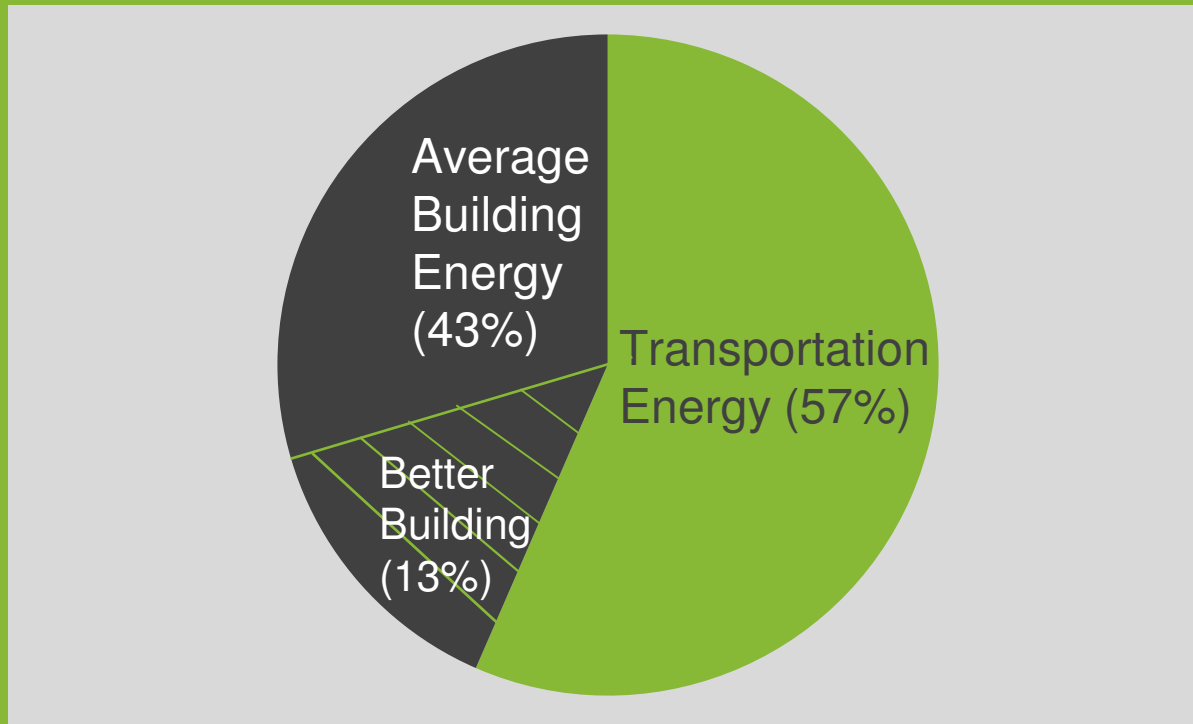
Natural Resources Defense Council (NRDC)



Why LEED-ND?



Building v. Transportation Energy (kBTUs/SF)



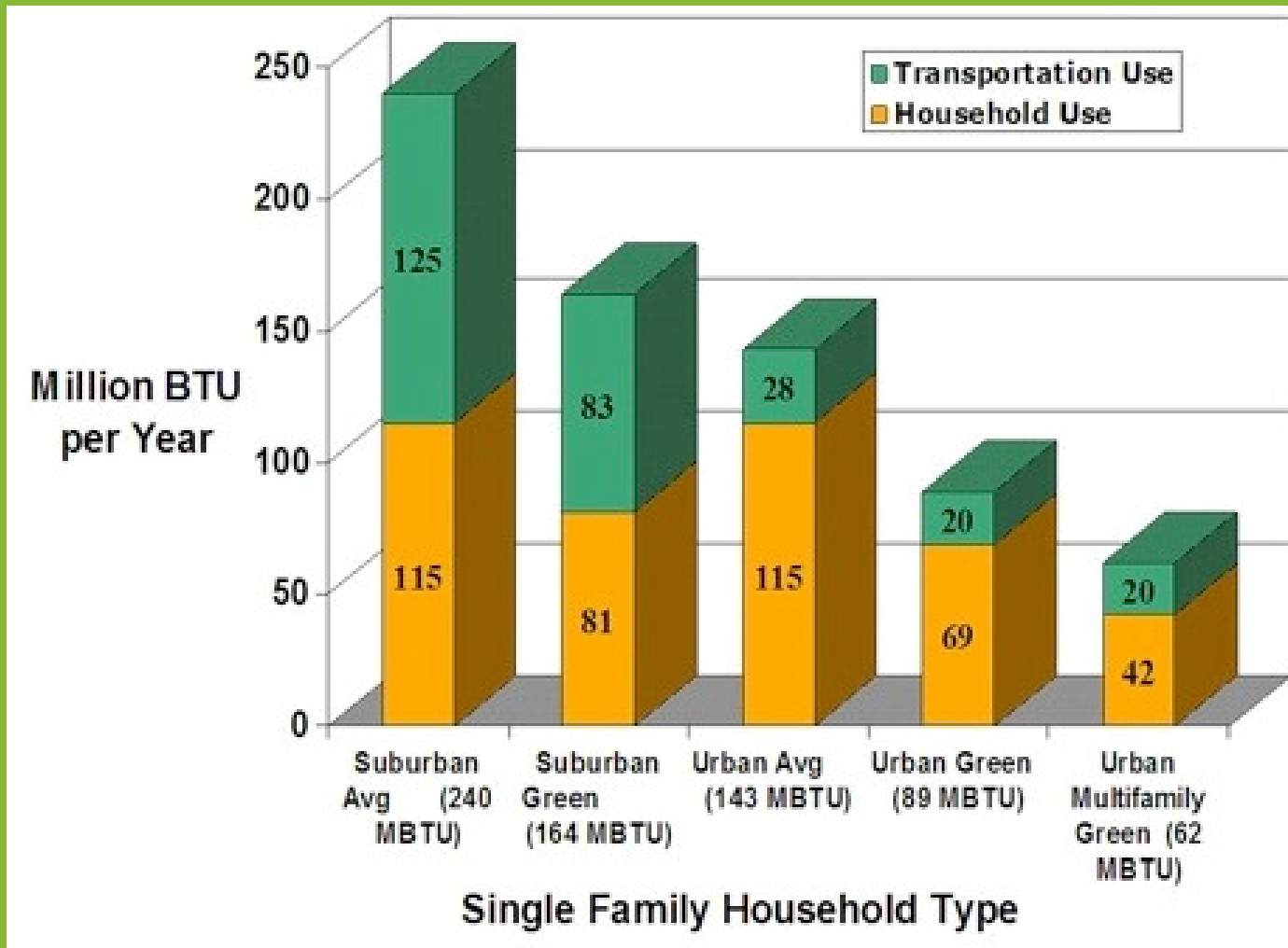
Average American Office Building

Better Building Energy Assumes ASHRAE 90.1-2004 Code Compliance

Source: BuildingGreen.com

<http://www.buildinggreen.com/auth/article.cfm?fileName=160901a.xml>

Urban v Suburban Energy Use



Report: 98 Percent Of U.S. Commuters Favor Public Transportation For Others



"With traffic congestion, pollution, and oil shortages all getting worse, now is the time to shift to affordable, efficient public transportation," APTA director Howard Collier said. "Fortunately, as this report shows, Americans have finally recognized the need for everyone else to do exactly that."



Values

Less Bad

- Energy
- Water
- Resources
- Health
- Land Use
- Natural Systems

More Good

- Health and Wellness
- Fostering community
- Economic growth
- Social Justice
- Connection with sources and disposal
- Connection with natural landscape and agriculture
- Beauty, civic pride, etc.



Nutrition Facts

Serving Size 8 crackers (28g)
Servings Per Container About 2

Amount Per Serving

Calories 120 Calories From Fat 30

% Daily Value*

Total Fat 3.5g	5%
Saturated Fat 1g	5%
Trans Fat 0g	
Polyunsaturated Fat 1.5g	
Monounsaturated Fat 0.5g	
Cholesterol 0mg	0%
Sodium 140mg	6%
Total Carbohydrate 22g	7%
Dietary Fiber Less than 1g	3%
Sugars 7g	
Protein 2g	

Vitamin A 0% • Vitamin C 0%
Calcium 10% • Iron 4%

* Percent Daily Values are based on a 2,000 calorie diet.

CONTINUED ON OTHER SIDE

LEED-ND Prerequisites and Credits

13 Prerequisites, 110 Points Total

Smart Location and Linkage	(6 prerequisites / 27 points)
Neighborhood Pattern and Design	(3 prerequisites / 44 points)
Green Infrastructure and Buildings	(4 prerequisites / 29 points)
Innovation in Design	(0 prerequisites / 6 points)
Regional Priority Credits	(0 prerequisites / 4 points)

Levels of Certification

Certified (40-49 points)

Silver (50-59 points)

Gold (60-79 points)

Platinum (80 + points)

Total Points = 110



Three Stages of Certification

Stage 1 : Pre-Review (optional): Intended to assist with entitlement approvals

Stage 2 : Certification of Approved Plan:
Certification of what has been approved to build

Stage 3 : Certification of a Completed Project: As construction is complete or near complete



Smart Locations and Linkages (SLL)



Photo Credit: DenverInfill.com

27 Points Possible

6 Prerequisites

- Location
- Water
- Imperiled Species
- Wetlands
- Ag. Land
- Floodplains

Major Credit Bundles

- Infill Redevelopment (10 pts)
- Transit (7 pts)

Neighborhood Pattern and Design (NPD)



44 Points Possible

3 Prerequisites

- Urban Design
- Density
- Connectivity

Major Point Bundles

- Urban Design (12 pts)
- Density (6 pts)
- Mixed-Income AND/OR Diverse Housing Types (7 pts)

Green Infrastructure and Building (GIB)



29 Points Possible

4 Prerequisites

- Certified Green Building
- Energy Efficiency
- Water Efficiency
- Construction Pollution Plan

Major Bundles

- Green Buildings (5 pts)
- Stormwater Management (4pts)

Innovation in Design (ID)



6 Points Possible

- Innovation
- Exemplary Performance



Regional Priority (RP)

4 Points Possible (out of 6)

For 80203

GIBc15 Recycled Content in Infrastructure

GIBc4 Water-Efficient Landscaping

NPDC2 Compact Development (>38 DUs/acre)

NPDC5 Reduced Parking Footprint

NPDC8 Transportation Demand Management

SLLc4 Bicycle Network and Storage



LEED FOR NEIGHBORHOOD DEVELOPMENT

A SUSTAINABILITY
TOOL FOR



**LOCAL
GOVERNMENTS**

Why are Municipalities Interested in LEED ND?



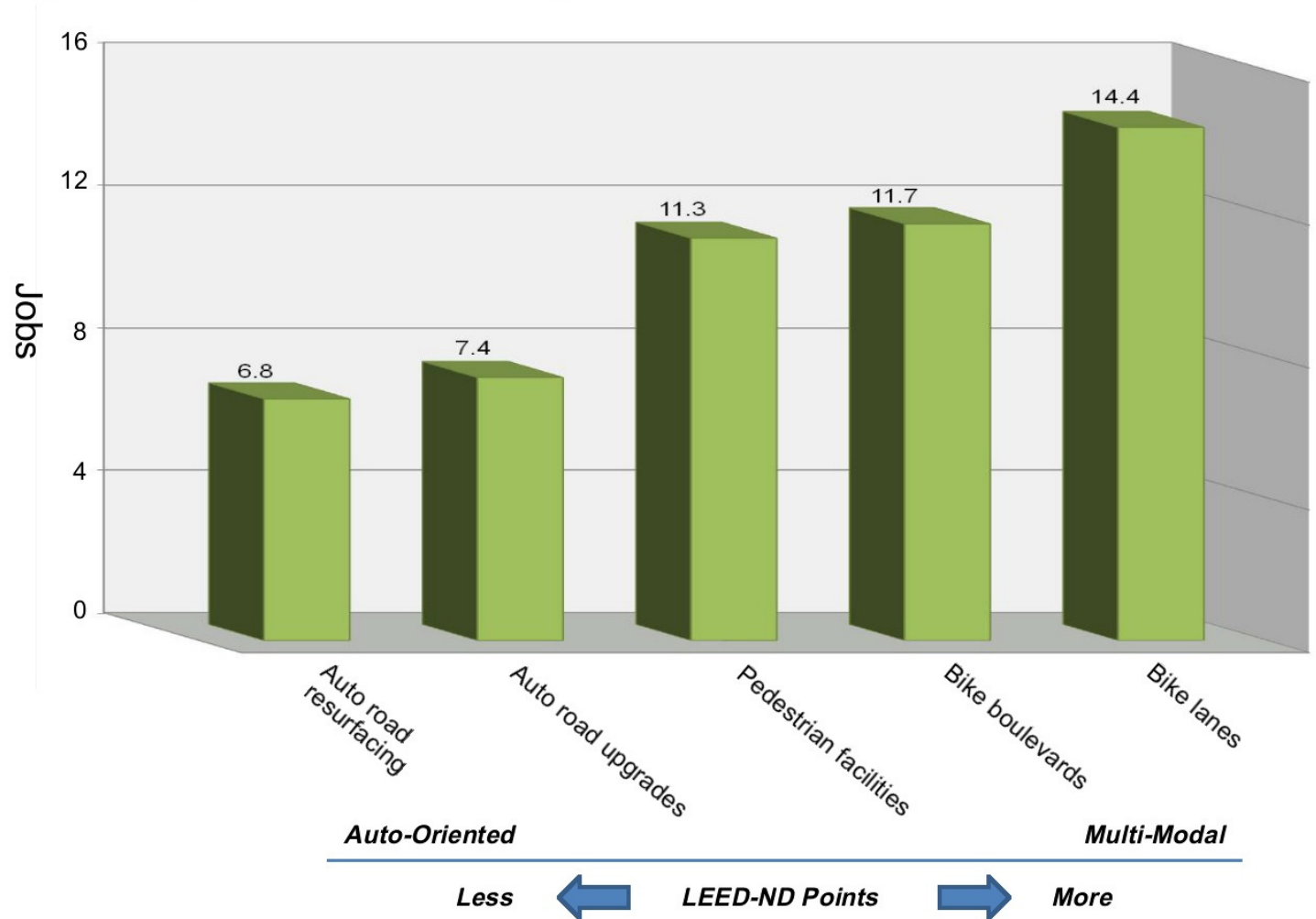
1. Economics
2. Communication
3. Metrics
4. Impact

LEED ND | Economics



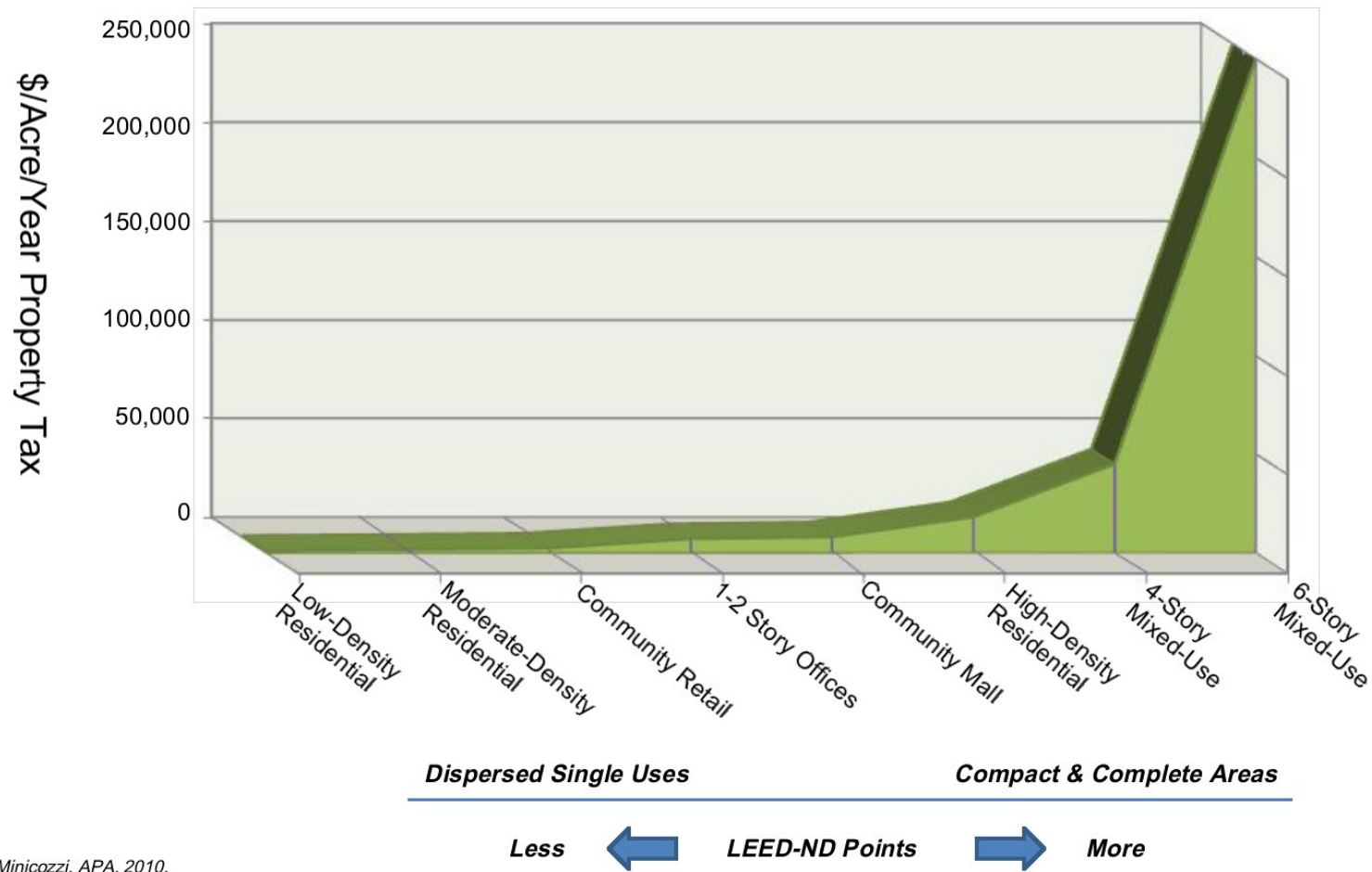
LEED ND | Economics

Employment per \$1 million expenditure



LEED ND | Economics

Asheville, N.C. Land-Use Revenues - \$/acre



Minicozzi, APA, 2010.

LEED ND | Communication

LEED green building certification

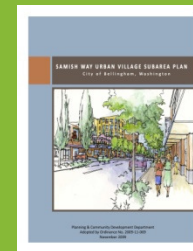
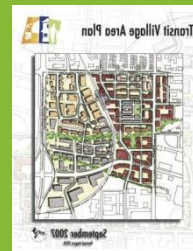
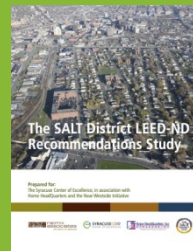
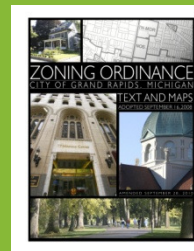
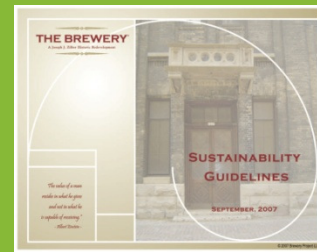
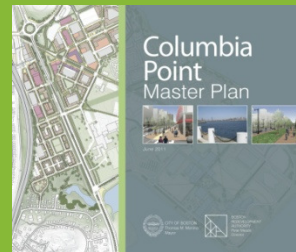
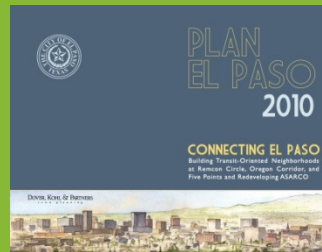
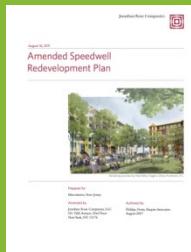
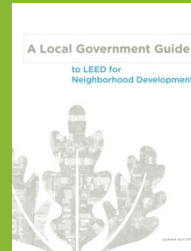
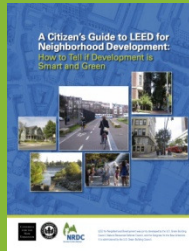
LEED provides building owners and operators with a framework for identifying and implementing practical and measurable green building design, construction, operations and maintenance solutions.

[About LEED](#)

[Credit library](#)



LEED ND | Metrics

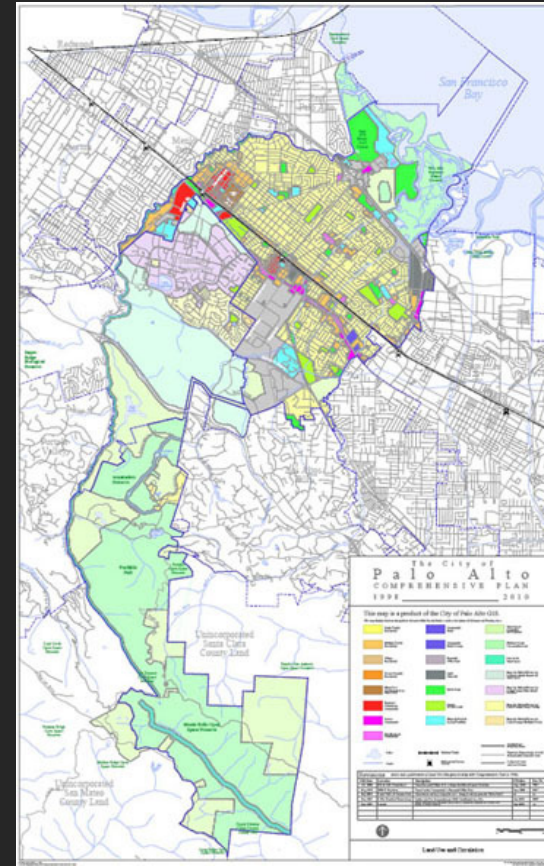


LEED ND | Impact



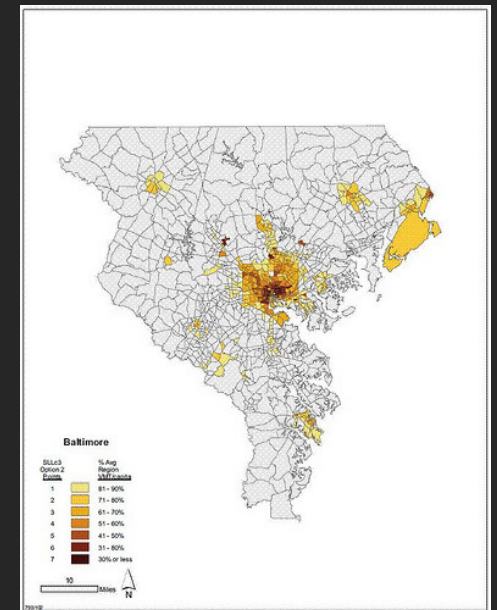
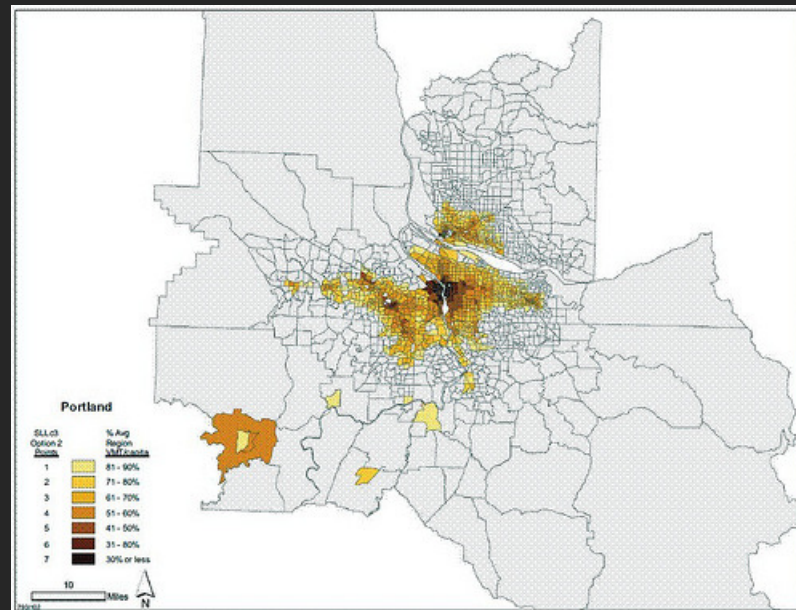
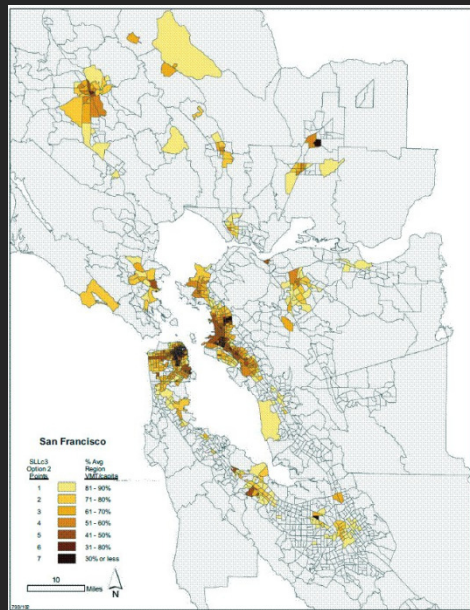
LEED ND Needs You!

LEED ND | Impact



Education = Raise all Boats

LEED ND | Impact



Enable Sustainable Development

LEED ND | Impact



Set Goals and Make Commitments

LEED ND | Examples

EVALUATE AN AREA PLAN USING LEED-ND CRITERIA

City of Bellingham, WA

After drafting the Samish Way and Fountain District Urban Village plans, staff evaluated how each neighborhood might score under the rating system and made improvements to sections that might not meet the criteria.

SAMISH WAY URBAN VILLAGE SUBAREA PLAN City of Bellingham, Washington



Planning & Community Development Department
Adopted by Ordinance No. 2009-11-069
November 2009

LEED ND | Examples

CONSTRUCT OR INSTALL UPDATED INFRASTRUCTURE

City of Milwaukee, WI

The City implemented a Tax Increment Financing (TIF) district for The Brewery project to help fund infrastructure, such as new streets.



LEED ND | Examples

STRATEGIES

DEVELOPMENT INCENTIVES

1. Expedited Review/Permitting Processes
2. Density Bonuses

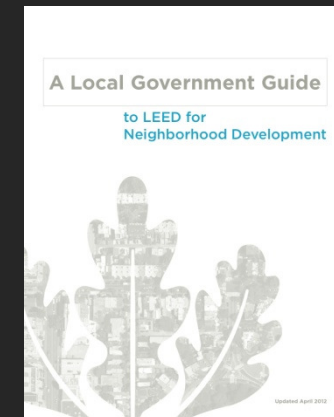
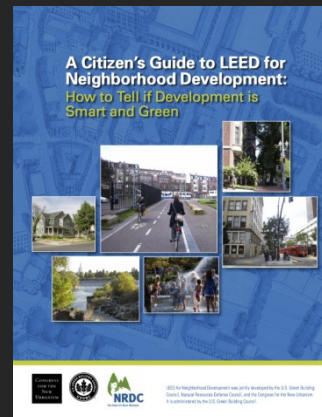
FINANCIAL INCENTIVES

1. Tax Credits and Abatements
2. Fee Reductions or Waivers
3. Grants

OTHER INCENTIVES

1. Marketing Assistance

LEED ND Resources



USGBC LEED ND Web Portal

- new.usgbc.org/leed/rating-systems/neighborhoods
- Download the free rating system and checklist documents
- Download the free Government Guide to LEED ND at:
 - new.usgbc.org/resources/local-government-guide-leed-neighborhood-development

NRDC LEED ND Web Portal

- www.nrdc.org/cities/smartgrowth/leed.asp
- Download the free Citizens Guide to LEED ND and a cool slideshow

CNU LEED ND Web Portal

- www.cnu.org/leednd

Thank You!



C² Sustainability
www.c2sustainability.com

Conor Merrigan | conor@c2green.com
Cliff Lind | cliff@c2green.com

You Are Invited!

Save the date **Monday November 5th 2012** for the upcoming
USGBC Colorado Metropolitan Branch
First Monday Speakers Series

Municipal Synergies **Implementing Sustainability at the Municipal Level**

Purpose:

To provide a venue for professionals involved with sustainability and the built environment to network, share best practices, and learn about various initiatives currently being implemented in the City and County of Denver, and Boulder County. We would especially encourage municipal employees throughout Colorado to attend.

Agenda

Pre-Event Networking:

5:30pm-6:30pm Networking Happy Hour at Denver Beer Company, 1695 Platte Street, Denver
Two blocks from REI. (Cash Bar)
Join us for this special networking event featuring

FREE DRINK TICKETS FOR MUNICIPAL EMPLOYEES SPECIAL DOOR PRIZE RAFFLE

Registration:

will be open from 5:30pm-6:30pm
REI Flagship Store, 3rd Floor Conference Room, 1416 Platte Street, Denver

Lecture & Dinner:

6:30pm-8:30pm
REI Flagship Store, 3rd Floor Conference Room, 1416 Platte Street, Denver
Lecture featuring the following speakers:

Christian Williss,

Sustainability Program Administrator, General Services, City and County of Denver

Susie Strife,

Sustainability Coordinator, Boulder County

FREE REGISTRATION FOR MUNICIPAL EMPLOYEES

(Contact Jennifer Gould for Municipal Employee Registration Code: 303-837-8811 x 128)

This program has been submitted to GBCI for 2 hours of Continuing Education

Please RSVP:

<http://usgreenbuildingcouncilcolorado.memberlodge.org/metropolitan>



COLORADO
Metropolitan Branch