



DENVER
THE MILE HIGH CITY

GROWING JOBS FROM PLANT TO PLATE



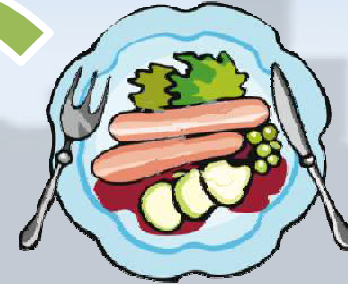
Production:

- a) Grow / Production
- b) Food Safety / Traceability



Compost:

- a) Fertilization
- b) Less Waste



Food Access:

- a) Consumption
- b) Access
- c) Marketing



Transportation:

- a) Distribution
- b) Transportation



Processing:

- a) Processing
- b) Packaging



GROWING JOBS FROM PLANT TO PLATE



DENVER
THE MILK HIGH CITY

WHY LOCAL?

The Local Multiplier Effect

“Money cycles 3.5 times around the Local Denver Economy”

Production

- Creates steady jobs for local residents.
- Drives economic growth as capital stays within the city.
- Less vulnerable to disruptions in the supply chain.
- Eliminates the cost of/demand for the energy resources needed for transportation.

\$ Local Economy

Community

Food Hub

Market / Restaurant



GROWING JOBS FROM PLANT TO PLATE



DENVER
THE MILE HIGH CITY

'FOOD INSECURE' AREAS IN DENVER

Globeville &
Elyria Swansea
10,162

Cole, Clayton & Skyland
14,209

North Park Hill
13,107

Montbello
19,277

W Colfax &
Sun Valley
7,908

East Colfax
10,136

Ruby Hill &
Overland
7,789

**Number of 'Food Insecure'
People in:**

Denver - 82,588

Metropolitan Area – 104,621

TOTAL NUMBER OF PEOPLE

187,209



GROWING JOBS FROM PLANT TO PLATE



DENVER
THE MILE HIGH CITY

NEW DEVELOPMENTS AROUND TOWN

**Veterans to Farmers
Greenhouse**
Retail
Educational

Gardens
Small Business
Development

**Large Scale
Production**
DIA Agro-Park

Food Hubs / Warehouses
Processing
Distribution

**Meat Processors/
Aquaponics**
Fish Processing



GROWING JOBS FROM PLANT TO PLATE



DENVER
THE MILE HIGH CITY

BENEFITS OF A LOCAL FOOD NETWORK



ECONOMIC

- Jobs
- Drives the local economy

ENVIRONMENTAL

- Natural Resource management
- Built environment
- Air / Water quality

SOCIAL

- Community building
- Healthier residents
- Better grades for our students
- Better eating habits of our neighborhoods



GROWING JOBS FROM PLANT TO PLATE



DENVER
THE MILE HIGH CITY

WHAT IS SUCCESS

G T F



GROWING JOBS FROM PLANT TO PLATE



DENVER
THE MILE HIGH CITY

THE PATH TO SUCCESS

FUTURE

NOW



GROWING JOBS FROM PLANT TO PLATE



DENVER
THE MILE HIGH CITY

THANK YOU FOR COMING

QUESTIONS?

Contact Information

Arthur Ortegon

Senior Policy Analyst

Office of Mayor Michael B. Hancock

City and County of Denver

720.865.9018 (work)

arthur.ortegon@denvergov.org

Kendra Sandoval

Community Relations

Office of Mayor Michael B. Hancock

City and County of Denver

720.865.9049 (work)

kendra.sandoval@denvergov.org



GROWING JOBS FROM PLANT TO PLATE



DENVER
THE MILE HIGH CITY