



# Denver Regional Data Consortium Meeting

Summer 2020

*Presented by:*

**DRCOG staff and  
guests**

---

July 2020



# Agenda

- welcome and introductions
- CAD to CAD Project Update
- Business Justification for GIS Projects/Programs
- DRCOG's New Experience Builder Webmaps
- update on DRCOG initiatives:
  - 2020 data acquisitions (imagery, lidar, planimetric data and land use land cover)

Stephen Kelley

# CAD TO CAD PROJECT UPDATE

Doug Genzer

# **BUSINESS JUSTIFICATION FOR GIS PROJECTS/PROGRAMS**

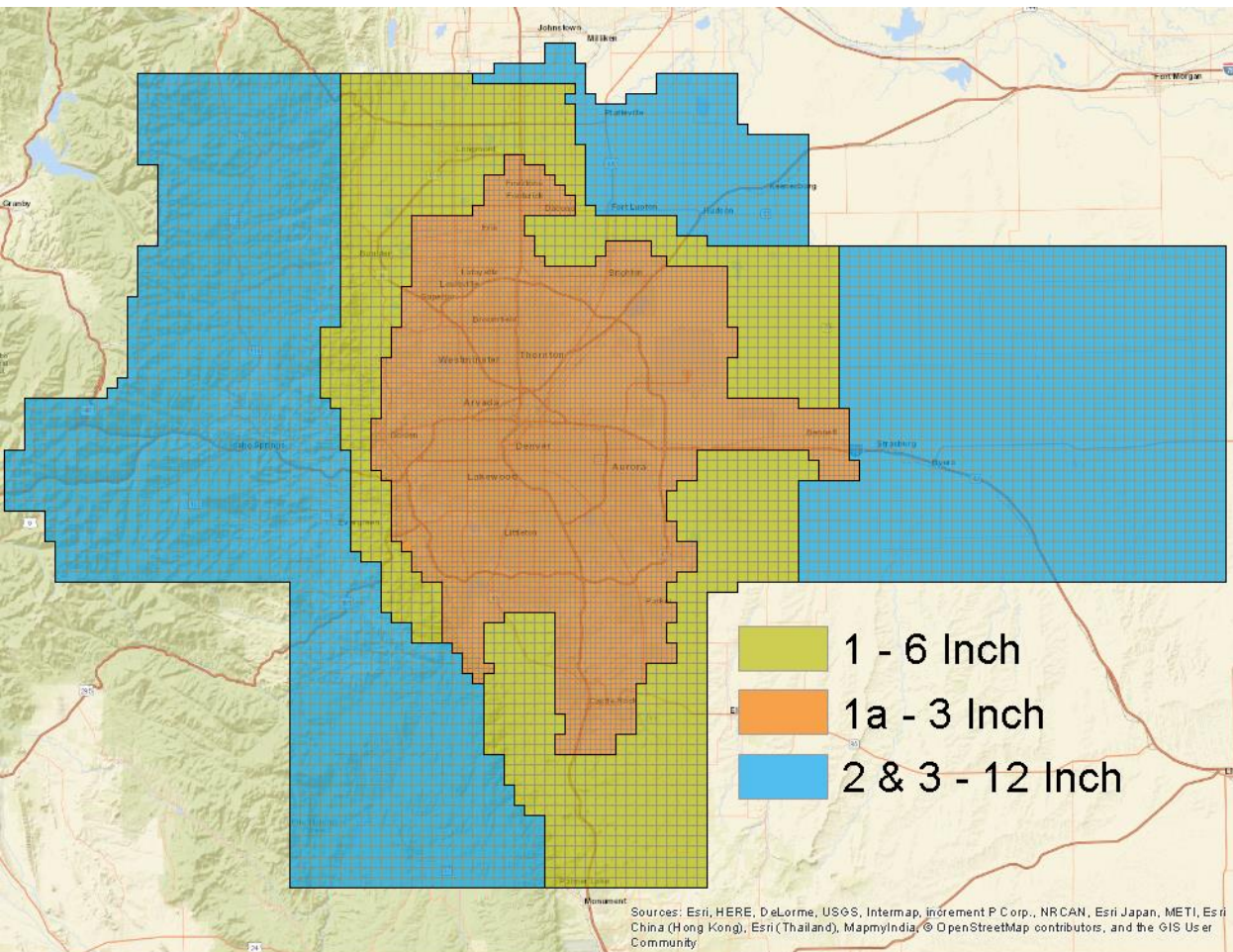
Dorothy Friday

# **DRCOG'S NEW EXPERIENCE BUILDER WEBMAPS**

# UPDATE ON DRCOG INITIATIVES



# 2020 imagery



custom flights (DRAPP) by Sanborn  
(for full regional coverage, high positional accuracy)

streaming services by Nearmap  
(for frequently updated snapshots of urban areas and oblique views)

48 partners

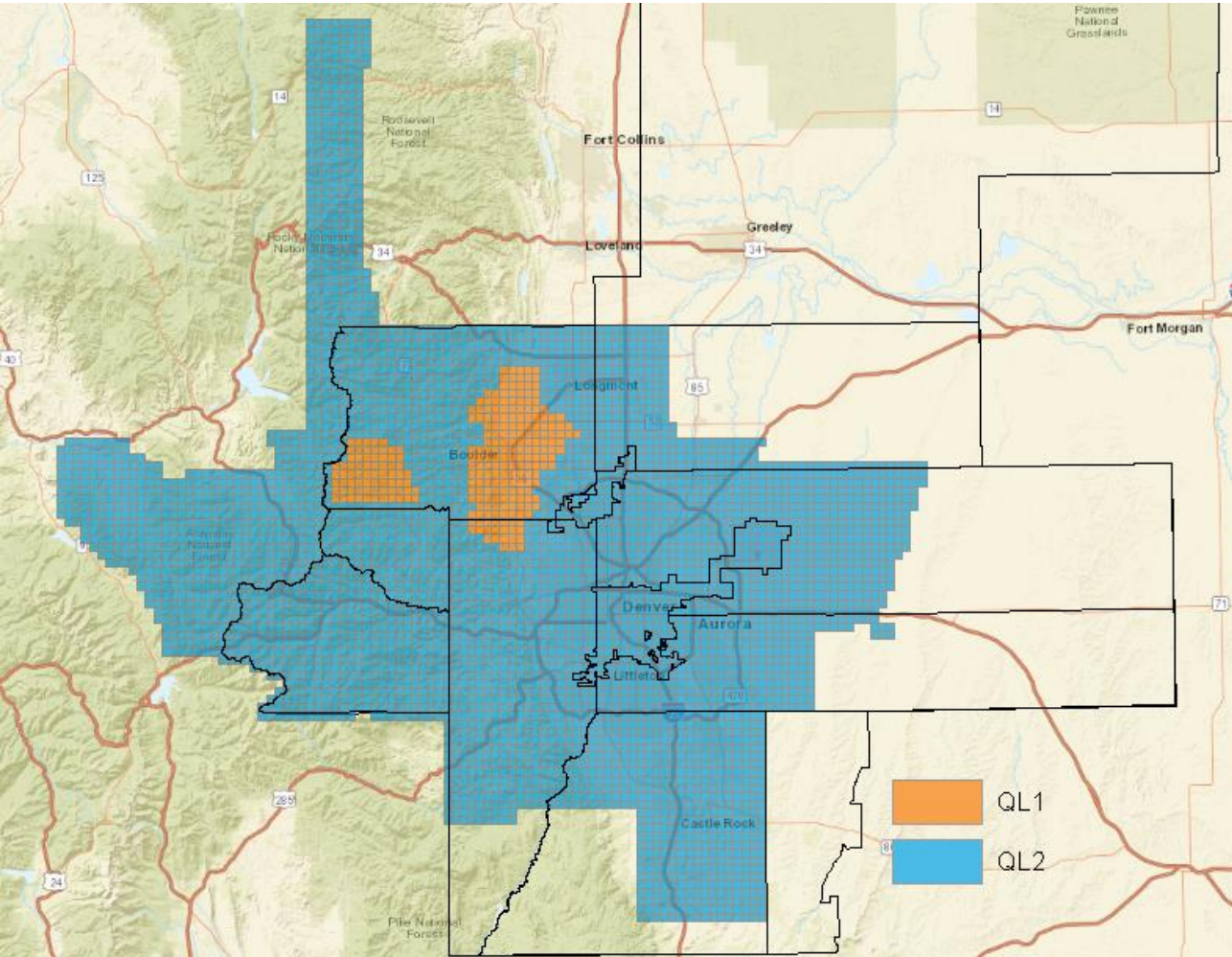
metro area and eastern plains were flown  
March-May 2020. Mountain areas are being  
flown now.

deliverables expected between January and  
March 2021.

**Looking for volunteers to help with quality control**



# 2020 lidar



Approximately 5,000 square miles of lidar data will be collected.

32 partners

Grant application for U.S. Geological Survey Broad Agency Announcement has been awarded!

Flights started in May and 60% of the project area has been captured.

Deliverables for the metro area expected in summer 2021 and the remaining area by the end of the year.





# Thank you to our partners!

Adams County I L  
Broomfield I  
Clear Creek County I L  
Denver I L  
Douglas County I L  
Gilpin County I L  
Jefferson County I L  
Arvada I L  
Aurora I L  
Bennett I L  
Boulder L  
Brighton I L  
Castle Pines I L  
Castle Rock I L  
Centennial I L  
Cherry Hills Village I  
Commerce City I L  
Dacono I  
Englewood I L  
Erie I

Federal Heights I  
Firestone I  
Frederick I L  
Glendale I  
Golden I L  
Greenwood Village I L  
Lafayette I L  
Lakewood I  
Littleton I  
Lone Tree I L  
Longmont I L  
Louisville I L  
Morrison I L  
Nederland I  
Northglenn I  
Parker I L  
Superior I L  
Thornton I L  
Westminster I L  
Wheat Ridge I L

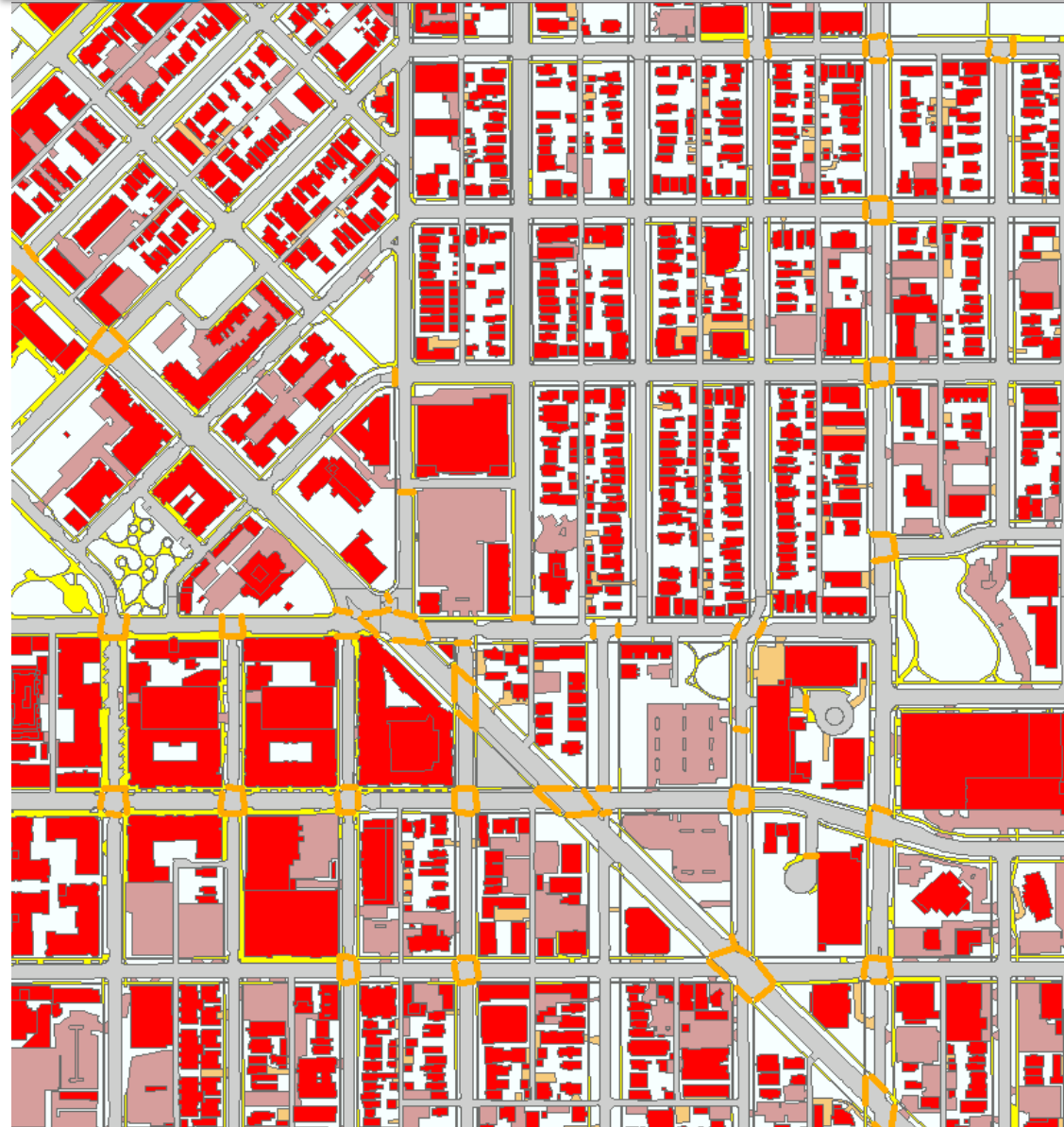
CWCB L  
MHFD L  
CDOT I  
RTD I  
Denver Water I L  
ACWWA I  
United Power I  
Metro Wastewater I  
Jeffcom 911 I  
SSPRD I  
South Metro Fire Rescue I  
E470 Public Highway Authority I  
Pinery Water & Wastewater District I  
Colorado Water Conservation Board L

I = imagery project participant

L = lidar project participant



## 2020 planimetric data



Feature delineations will be made from 2020 imagery and lidar data.

Quotes for participation were sent out in April. There is still time to sign up for the project!

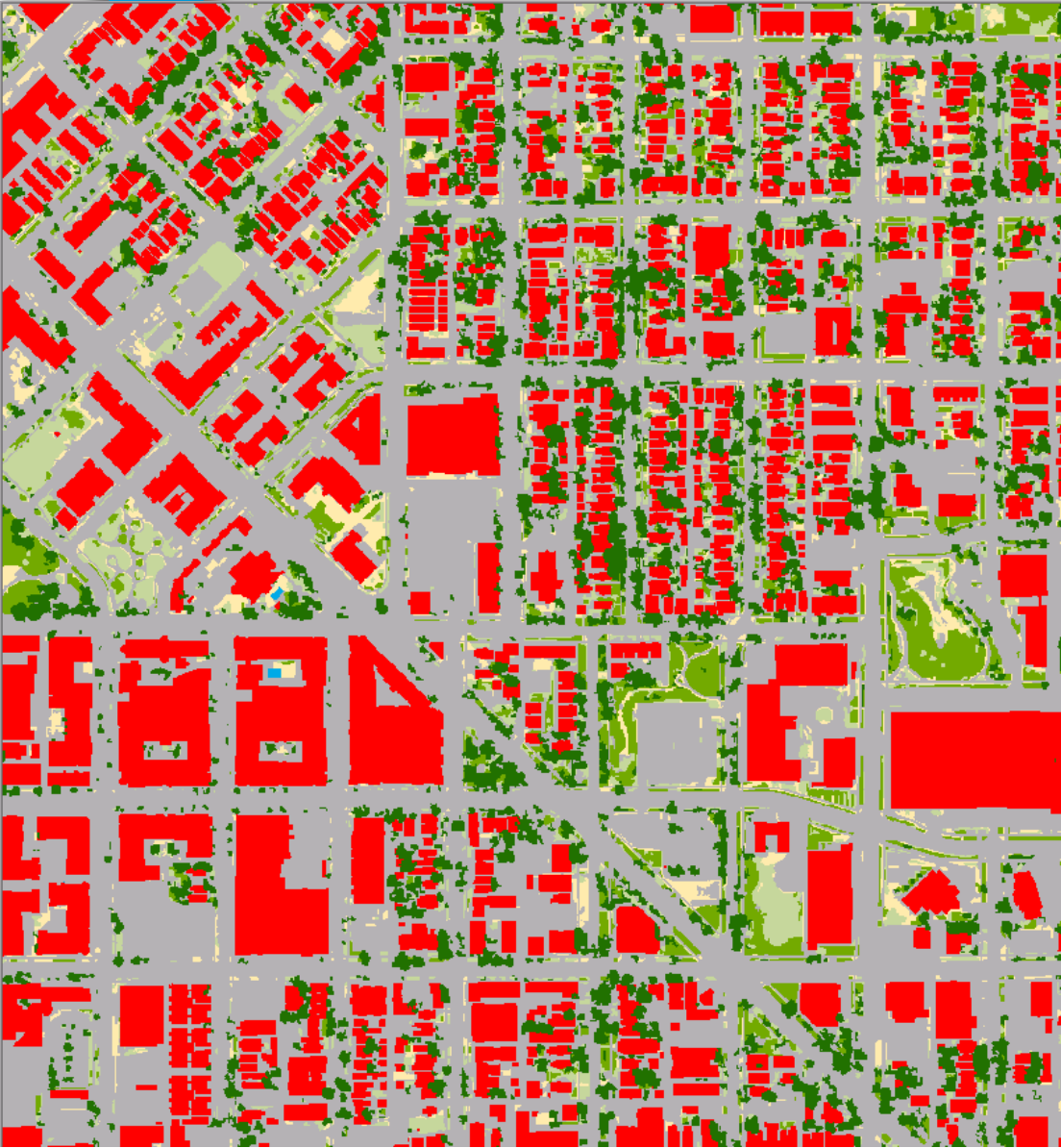
We have 16 partners and counting.

**Letters of Intent are due this fall.**

Project starts in February 2021.



## 2020 land cover data



Wall-to-wall classification that *may* be made from 2020 imagery and lidar data.

6 partners and counting.

**Letter of Intent due this winter.**

Planning to apply for grants throughout the fall and winter.

USGS created a crosswalk for us so that our data can be compared to NLCD. *Thanks Mark and Jay!*



# Want more data acquisition updates?

- Become a project partner for more detailed updates
- Visit our websites for meeting materials etc.
  - <https://drcog.org/services-and-resources/data-maps-and-modeling/denver-regional-aerial-photography-project>
  - <https://drcog.org/services-and-resources/data-maps-and-modeling/regional-lidar-project>
  - <https://drcog.org/services-and-resources/data-maps-and-modeling/regional-planimetric-data-project>
  - <https://drcog.org/services-and-resources/data-maps-and-modeling/regional-land-use-land-cover-project>



Thank you!

**QUESTIONS?**