

DENVER REGIONAL DATA CONSORTIUM

Spring 2023

Take the annual
DRDC survey!



Jenny Wallace, GIS Manager

AGENDA



Metro Denver Nature Alliance Regional Conservation Assessment

Chris Hawkins, The Nature Conservancy

North American Terrestrial Reference Frame of 2022 and Colorado State Plane Coordinate System 2022 updates

John Hunter, Denver Water

2020 crash data

Christine Connally, DRCOG

Denver Regional Aerial Photography Project updates

Ashley Summers, DRCOG

Voluntary round robin updates

Attendees



METRO DENVER NATURE ALLIANCE REGIONAL CONSERVATION ASSESSMENT





NATRF2022 AND CSPCS2022 UPDATES





2020 CRASH DATA



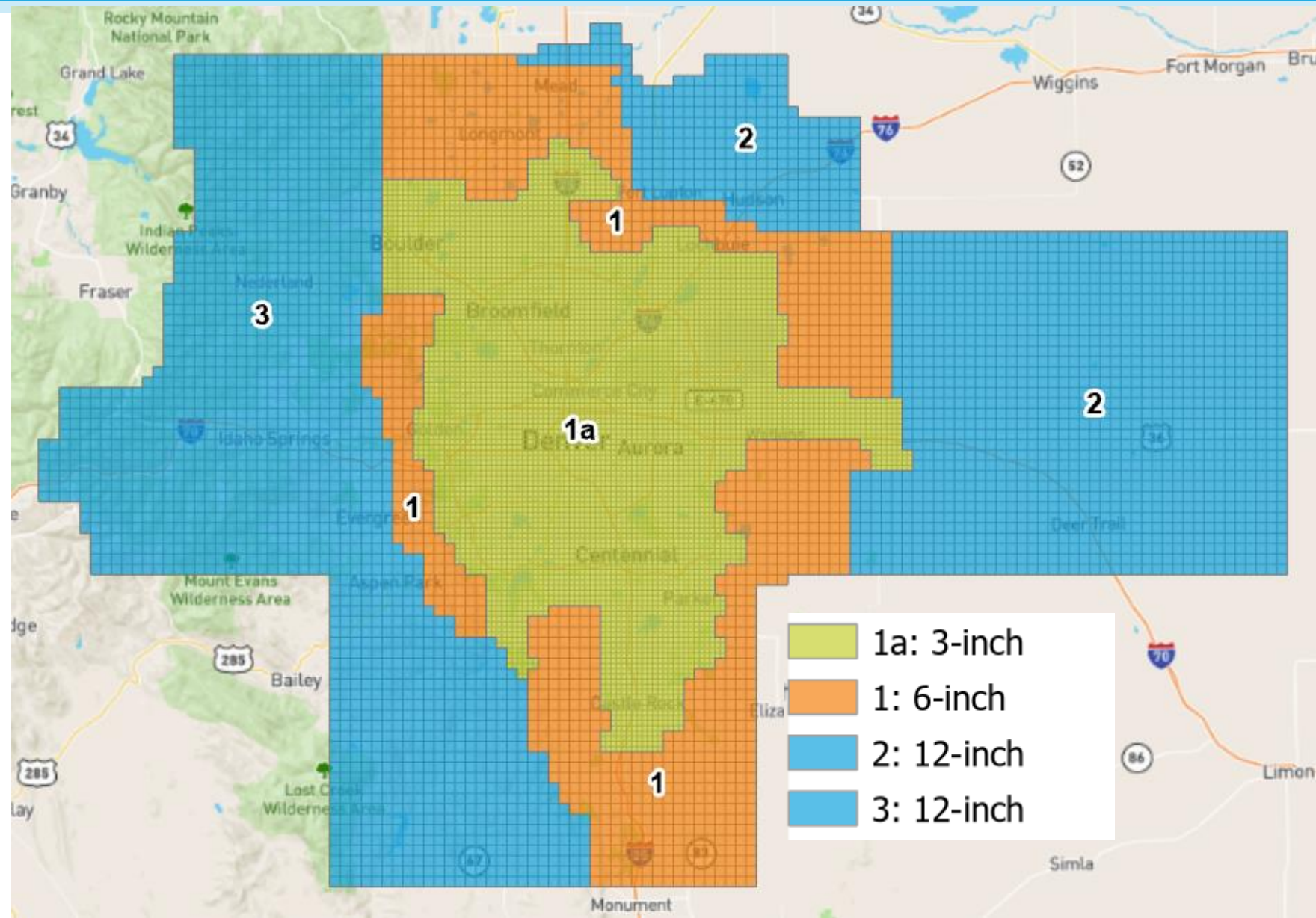
DENVER REGIONAL AERIAL PHOTOGRAPHY PROJECT UPDATES



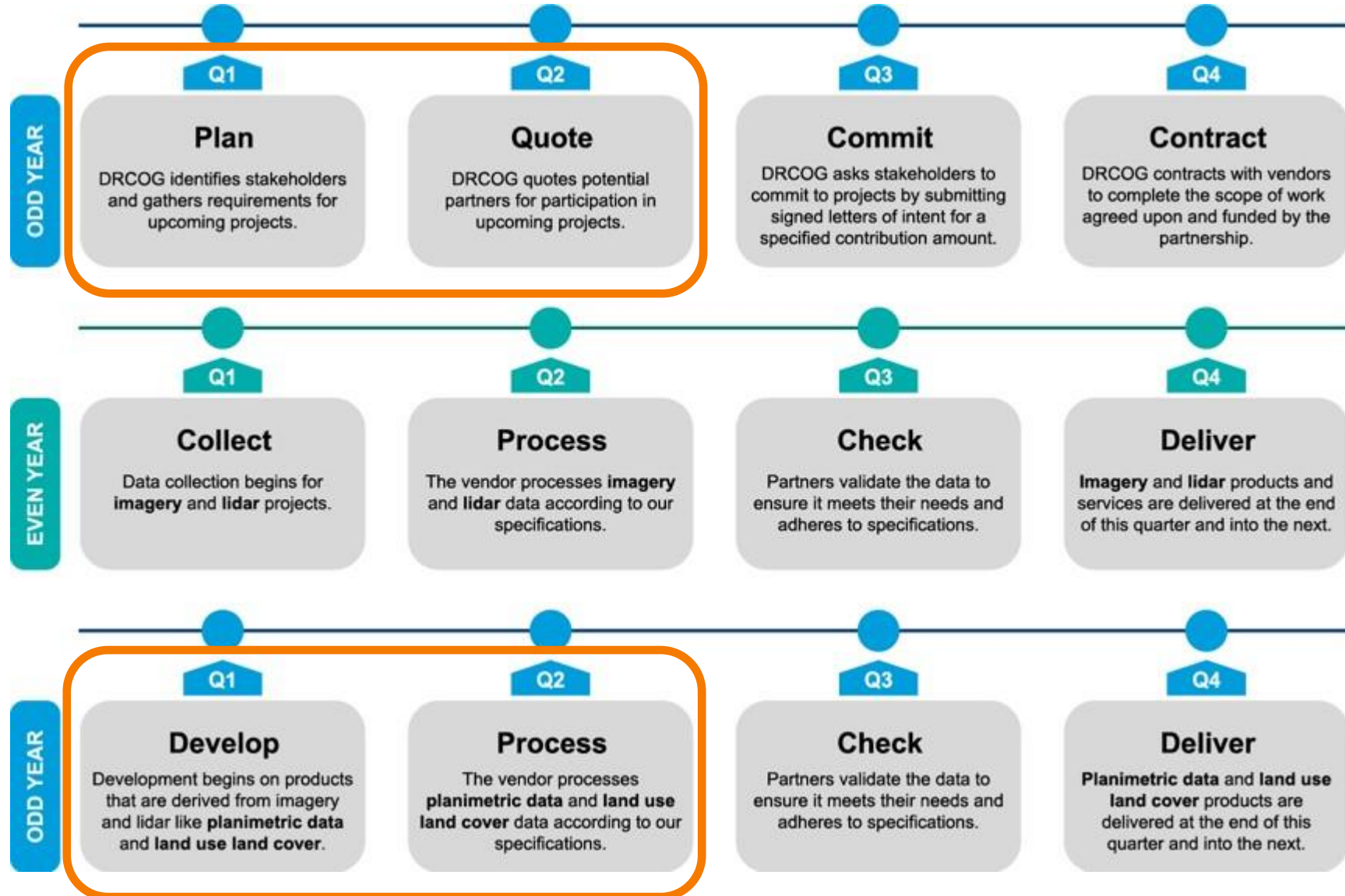
DRAPP 2022 included a **custom flight** similar to collections from 2002-2020.

The 2022 imagery will be available to the public in approx. **March 2025**.

Until then, it can be **purchased** from DRCOG and Sanborn Map Company, Inc.



TIMELINE



DRAPP 2024



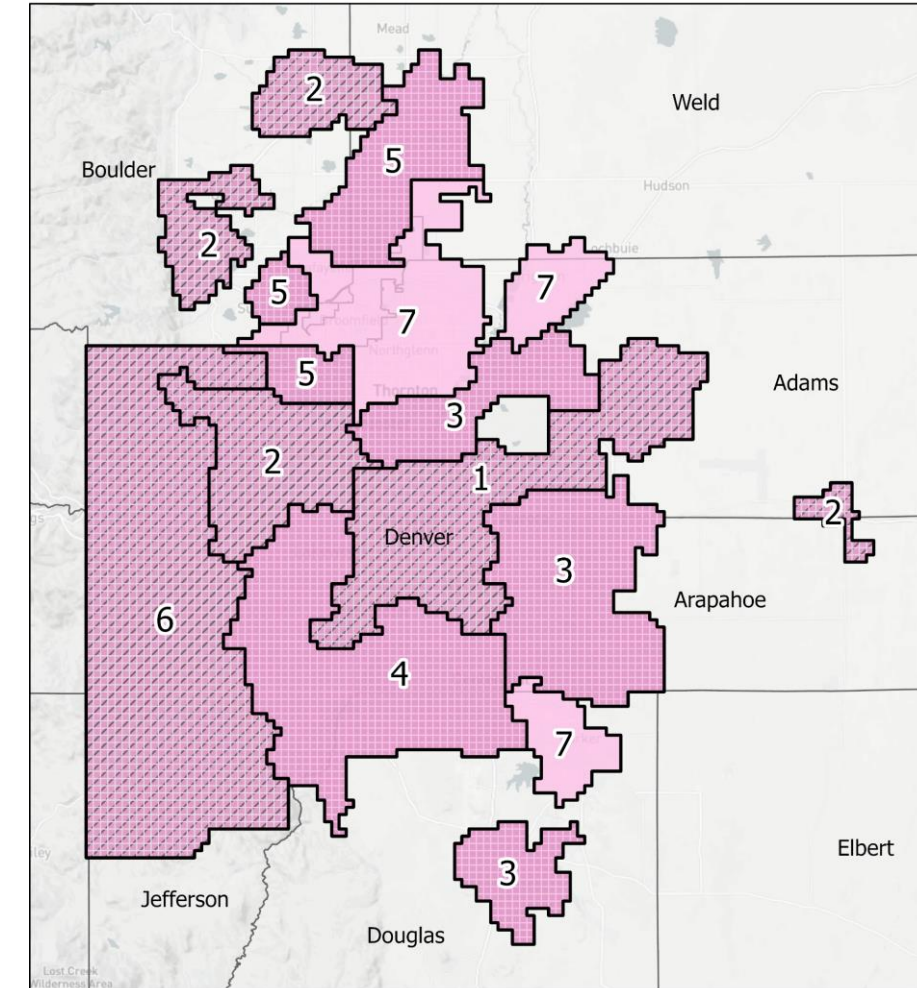
- ✓ 3/2 – Project **kick-off** meeting
- ✓ 3/17 - **Requirements gathering** survey due
- ✓ 4/17 - **Quotes** for participation sent to past partners
- 10/15 – Signed **letters of intent** and **license agreements** due
- 11/15 – Seek DRCOG Finance and Budget Committee **Approval** to proceed.
- 12/15 – Contract executed with **Nearmap**
- 1/15 – Contract executed with **Sanborn**

PLANIMETRIC DATA 2022 MAP



- Basic package (minimum buy-in)
 - Buildings
 - Edge of pavement
 - Parking
 - Sidewalks and ramps
 - Trails
- Driveway (buy-up)
- Impervious surface (buy-up)

Delivery Groups and Feature Packages



Basic Package
Driveways
Impervious Surface

This map shows the extents of the features to be collected in the 2022 Regional Planimetric Data Project and the group in which they will be delivered.

0 3 6
Miles

SOURCE DATA: DRCOG,
Mapbox Basemap: SR 6428
Creator: AS, 12.18.2022

2022 PLANIMETRIC DATA TIMELINE



- Interim deliverables are provided to partners as early as August 2023.
- When all areas are final, they are combined into one layer per feature and made available on the Regional Data Catalog for public download.
- The 2022 planimetric data is expected to be on the Regional Data Catalog in **May 2024**.

ACCESSING DATA – REGIONAL DATA CATALOG

1. Navigate to data.drcog.org
2. Search by feature name or go to the Data tab and turn on the “Regional Planimetrics” filter.

PROGRAM

- ☐ Regional Land Cover
- ☐ Regional Lidar
- ☒ Regional Planimetrics
- ☐ Denver Regional Aerial Photography Project

3. Sort by “Data Vintage” to see the 2020 data at the top of the list.
4. Select a dataset.

5. Download the shapefile and xml metadata from Get Data.

BUILDING ROOFPRIINTS 2020

Data Vintage: Apr 2022

Date Modified: Apr 2022

Original Sources: DRCOG

[Terms of Use](#)

Zoom in to interact with features.



GET DATA

Shapefile

GeoJSON

KML

XML Metadata

Share your work with your colleagues! The Data Consortium newsletter reaches 300+ GIS professionals in the region from the public, private, and academic sectors.

Issues: April, July, October, January

Contact Jenny at jwallace@drcog.org to contribute.



ROUND ROBIN UPDATES



THANK YOU!
QUESTIONS?

Jenny Wallace
Program Manager (GIS), Regional Planning and Development
jwallace@drcog.org
303-480-6754