

USING CRASH 2020 DATA

Christine Connally Senior GIS Analyst

CRASH 2020

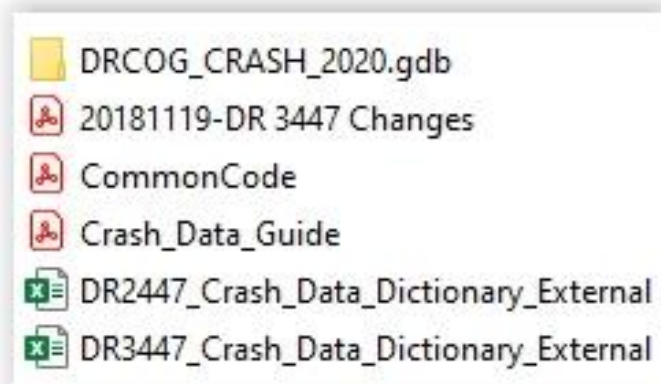


- New to 2020 data
 - Crash data form has migrated from DR2447 to DR3447
 - Data is split into a main table and 3 ancillary tables
 - Relationship classes were created by DRCOG
 - Additional fields were created by DRCOG
 - Data dictionary has been updated to DR3447 schema but also includes some historical DR2447 fields

CRASH 2020: REGIONAL DATA CATALOG



- Crash 2020 available on Regional Data Catalog
 - Different than previous years, includes zipped file with geodatabase and supplemental information



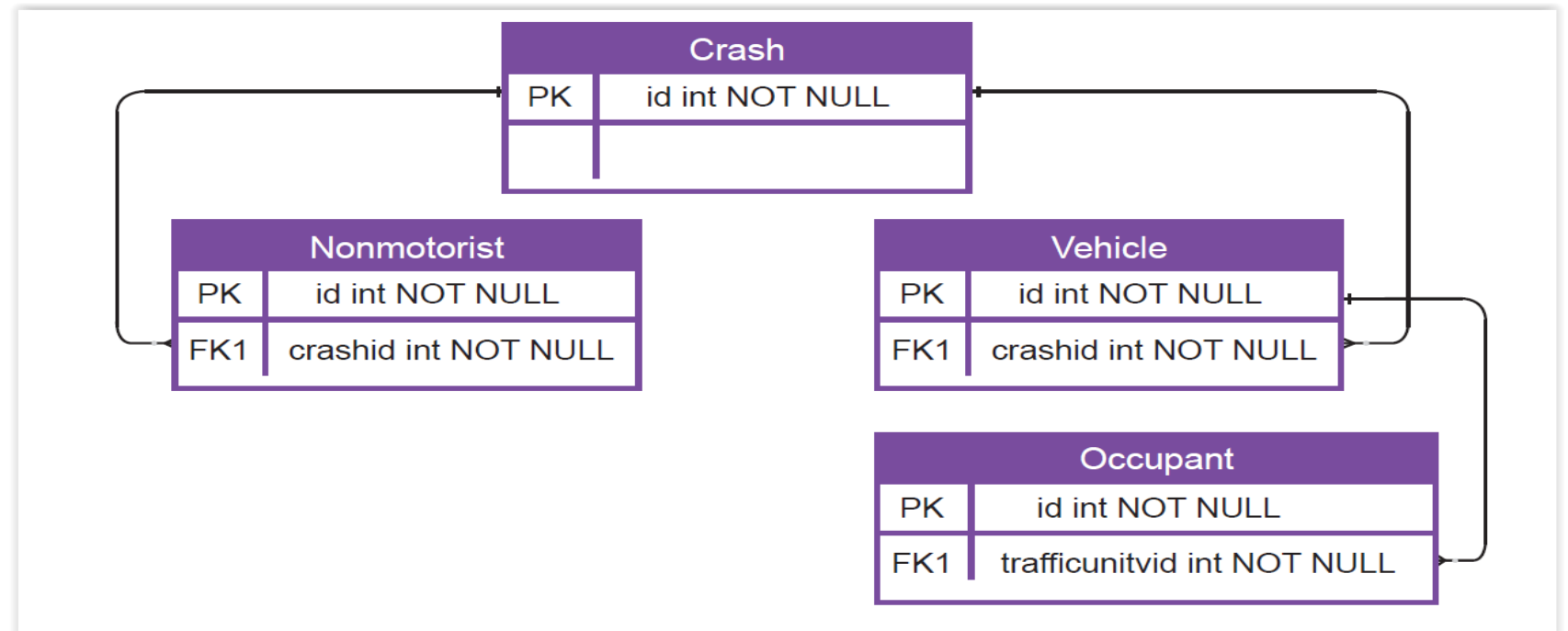
CRASH 2020: GEODATABASE

DRCOG_CRASH_2020.gdb
20181119-DR 3447 Changes
CommonCode
Crash_Data_Guide
DR2447_Crash_Data_Dictionary_External
DR3447_Crash_Data_Dictionary_External

CRASH_2020
CRASH_2020_CRASH_2020_NONMOTORIST
CRASH_2020_CRASH_2020_VEHICLE
CRASH_2020_NONMOTORIST
CRASH_2020_OCCUPANT
CRASH_2020_VEHICLE
CRASH_2020_VEHICLE_CRASH_2020_OCCUPANT

- Crash
 - Main table, information about crash such as date, location, cause, DRCOG created fields for analysis, etc
- Nonmotorist
 - Ancillary table, info about each nonmotorist involved in crash such as non motorist type, safety equipment, movement prior to crash, etc
- Occupant
 - Ancillary table, info about each occupant of a vehicle involved in a crash such as age, position in vehicle, safety equipment, etc
- Vehicle
 - Ancillary table, info about each vehicle & driver involved in a crash such as vehicle type, model, speed, driver action, etc

CRASH 2020: GEODATABASE RELATIONSHIPS









Data is linked by relationship classes which already exist in the database!

Use this diagram if you would prefer to *join* the data

CRASH 2020: HELPFUL DOCUMENTS



-  DRCOG_CRASH_2020.gdb
-  20181119-DR 3447 Changes
-  CommonCode
-  Crash_Data_Guide
-  DR2447_Crash_Data_Dictionary_External
-  DR3447_Crash_Data_Dictionary_External

- 20181119-DR 3447 Changes
- Common Code
- Crash Data Guide
- DR2447
- DR3447

CRASH 2020: DRCOG CREATED FIELDS



- Found in the main crash table
- drcog_hp: record is a “High Priority” (crash involves a serious injury, fatality, bicycle, or pedestrian) crash, and the location is hand checked by GIS team.

CRASH 2020: DRCOG CREATED FIELDS



- drcog_nm_si: number of non-motorists killed
- drcog_nm_k: number of non-motorists seriously injured
- drcog_occ_k: number of occupants killed
- drcog_occ_si: number of occupants seriously injured
- drcog_total_k: total number of people killed in crash
- drcog_total_si: total number of people seriously injured in crash

CRASH 2020: DRCOG CREATED FIELDS



- drcog_bike: “y” if a crash involves a bicycle.
- drcog_ped: “y” if a crash involves a pedestrian
 - Created using the most, first, second, third, and fourth harmful event sequences codes
- We do not correct CDOT attribute data

CRASH 2020: HELP



- [Regional Data Catalog help](#)

Please reach out if you have any questions!

ArcPro Demo



QUESTIONS?

Jenny Wallace
jwallace@drcog.org

Christine Connally
cconnally@drcog.org