



COLORADO

Department of
Transportation



**TRANSPORTATION
MATTERS**



STATEWIDE TRANSPORTATION PLAN

Environmental Consultation Introductory Webinar



COLORADO

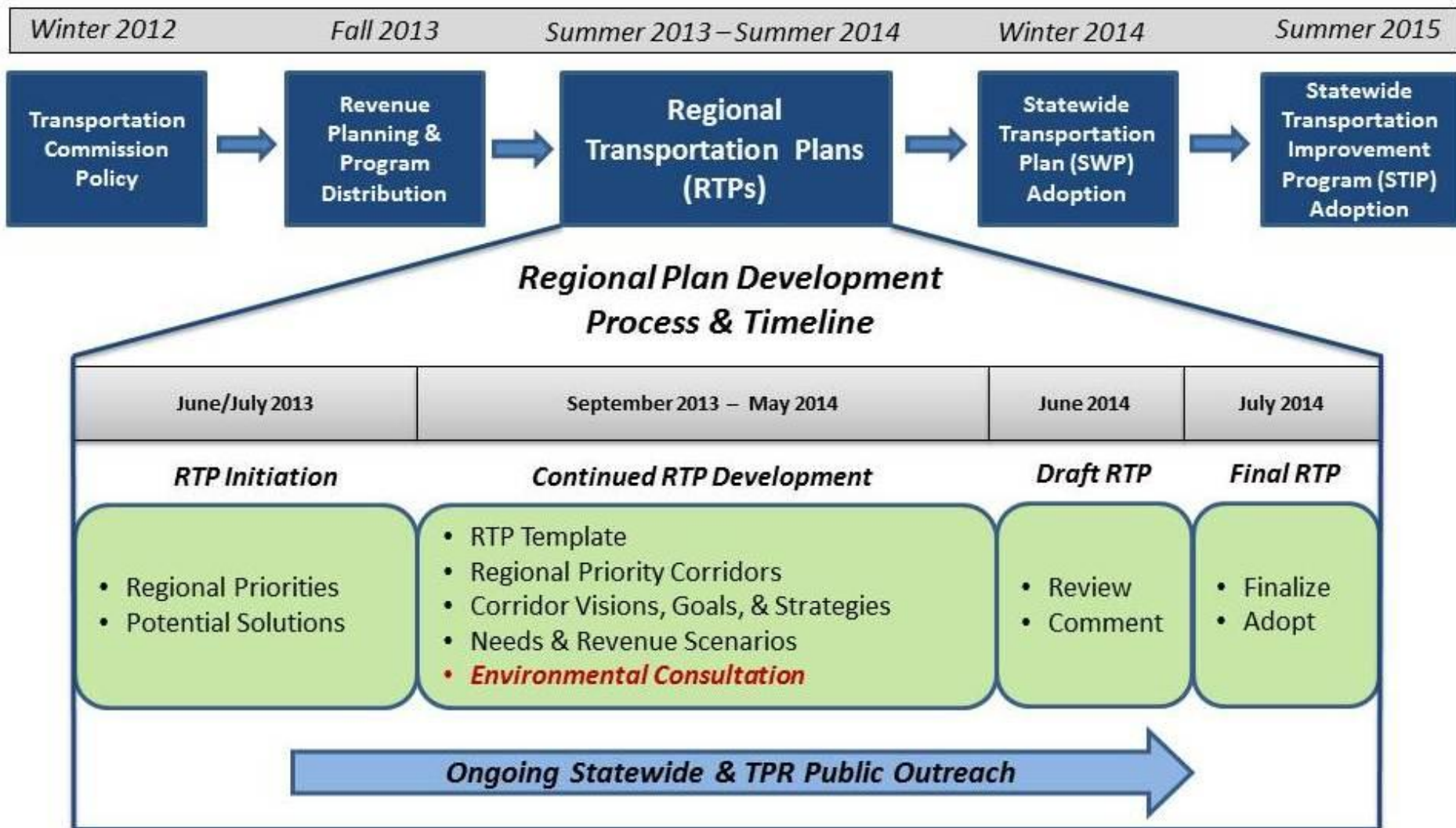
Department of
Transportation

Agenda

- Transportation Planning Process Overview
- Environmental Consultation Background & Purpose
- Goals of Environmental Consultation
- Process Overview
- Key Questions
- Using the PIN Tool
- Timeline for Commenting
- Questions & Comments

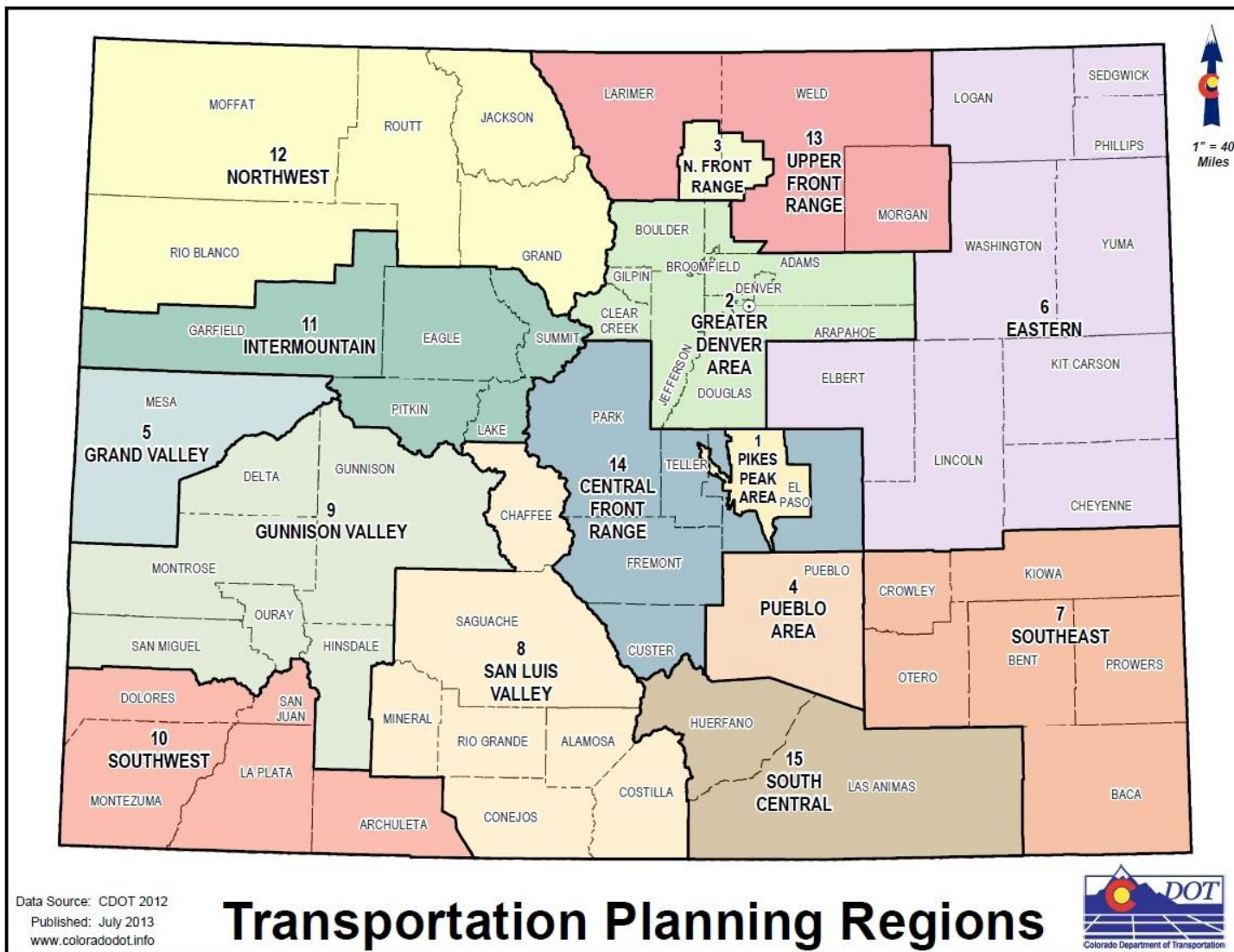


Plan Development Schedule





Transportation Planning Regions



Data Source: CDOT 2012
Published: July 2013
www.coloradodot.info

Transportation Planning Regions





Background & Purpose

- Environmental Consultation is the process that CDOT uses to engage environmental resource and regulatory agencies in the transportation planning process
- A federal regulatory requirement under MAP 21:
 - *126 Stat. 506: “A long-range transportation plan shall include a discussion of types of potential environmental mitigation activities and potential areas to carry out these activities...The discussion shall be developed in consultation with Federal, State, and Tribal wildlife, land management, and regulatory agencies.”*



Background & Purpose

- In addition to federal consultation requirements, CDOT is seeking agency involvement in the transportation planning process in order to:
 - *Build upon the conversations and relationships established during the 2035 Statewide and Regional Plan development process*
 - *Identify potential ‘red-flags’ early on through collaboration and consultation*
 - *Provide agencies with initial ideas of where potential projects may occur in the 10-year and 25-year timeframes*
 - *Share regional mitigation plans and strategies and the implementation of those mitigation plans*



Goals

- This process should result in resource and regulatory agencies providing valuable input to the planning process with minimal time commitment
- Through agencies' input:
 - Resource agencies gain an understanding of TPR priorities and potential future project areas
 - Planning partners gain an understanding of the types of resources located in their priority corridors
 - CDOT gains an idea of potential conflicts between resources and priority corridors far in advance of the NEPA process.



Consultation Process Overview

- The conversation between agencies and CDOT will take place virtually using the Planning Insight Network (PIN) Tool and a series of two webinars
 - Participants will attend remotely, comment via the online mapping system, and discuss issues through the webinars
 - This process will reduce travel, allows more time for deliberation and internal agency discussion, and foster a collaborative interaction between agencies



Consultation Process Overview

- Introductory Webinar (2/26/2014)
 - Description of Goals & Processes
 - Demonstration of PIN Tool
 - Questions & Answers
- Comment Period (Two Weeks - TBD)
 - Internal Agency Consultation
 - Commenting by Agencies
 - Reading Other Agencies' Comments
 - Technical Support Throughout
- Concluding Webinar (TBD)
 - Summarizing Input
 - Discussion of Key Issues
 - Formulating Recommendations



Key Questions for Participants

Based on the high priority corridors* identified within each TPR, please comment on:

1. Known critical environmental resources within each TPR's priority corridors
2. Any existing or future management plans for the TPR/priority corridor
3. Any additional stakeholders that should be included in future project discussions for a particular corridor or location

* High priority corridors are those identified by the TPRs as being of greater significance to their region and/or likely to receive improvements in the future.

* Intermountain and Upper Front Range TPRs have not yet designated their 2040 high priority corridors, so those used in the PIN Tool are from the 2035 plan



Questions / Comments

Are there any questions or comments at this point before we move on to a demonstration of the PIN Tool?





Using the PIN Tool

- Visit <http://dtdapps.coloradodot.info/pinenvironmental/account.aspx>
- Log on using the name and password provided by CDOT



map viewer
view the map

login
start here!

about
what is pin?

contact
get in touch

logout
log out

PIN & Corridor Mapping Log On

Please enter your username and password. [Register](#) if you don't have an account.

Account Information

Username:

Password:

☐ Remember me?

Log On



Using the PIN Tool

- The top of the screen contains a tool bar like the one below:



- You will only need to focus on the following icons:



Map Layers

Comment on Corridor

Comment on Location

View Comments

Identify Map Feature

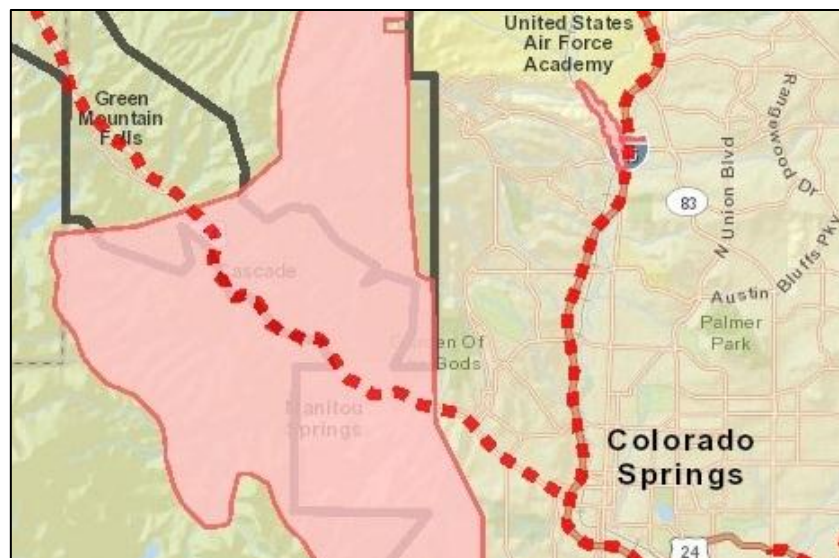


Using the PIN Tool

- Select data layers to display
 - Click the check boxes in the Map Layers menu to add or remove individual layers

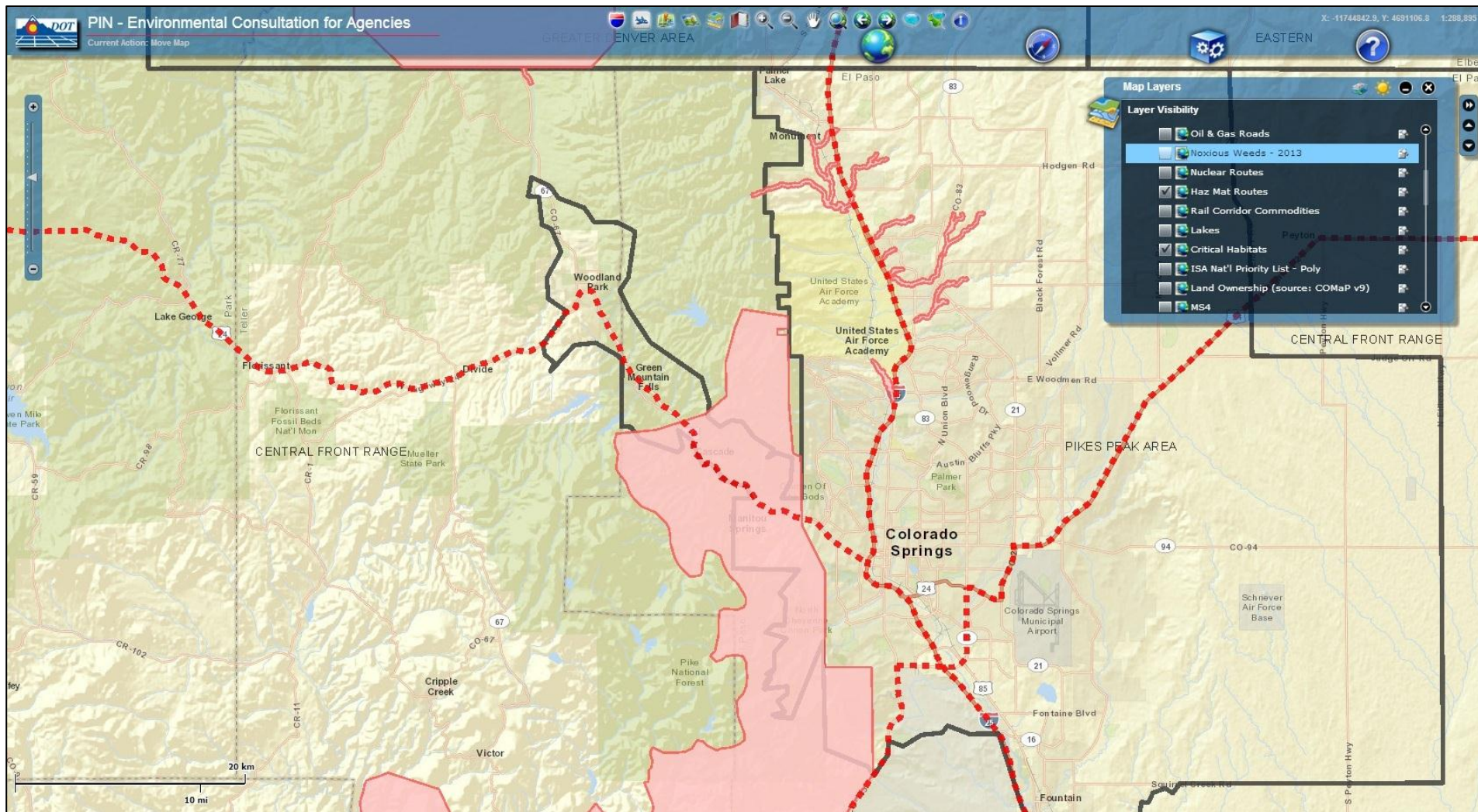


- View data layers on map





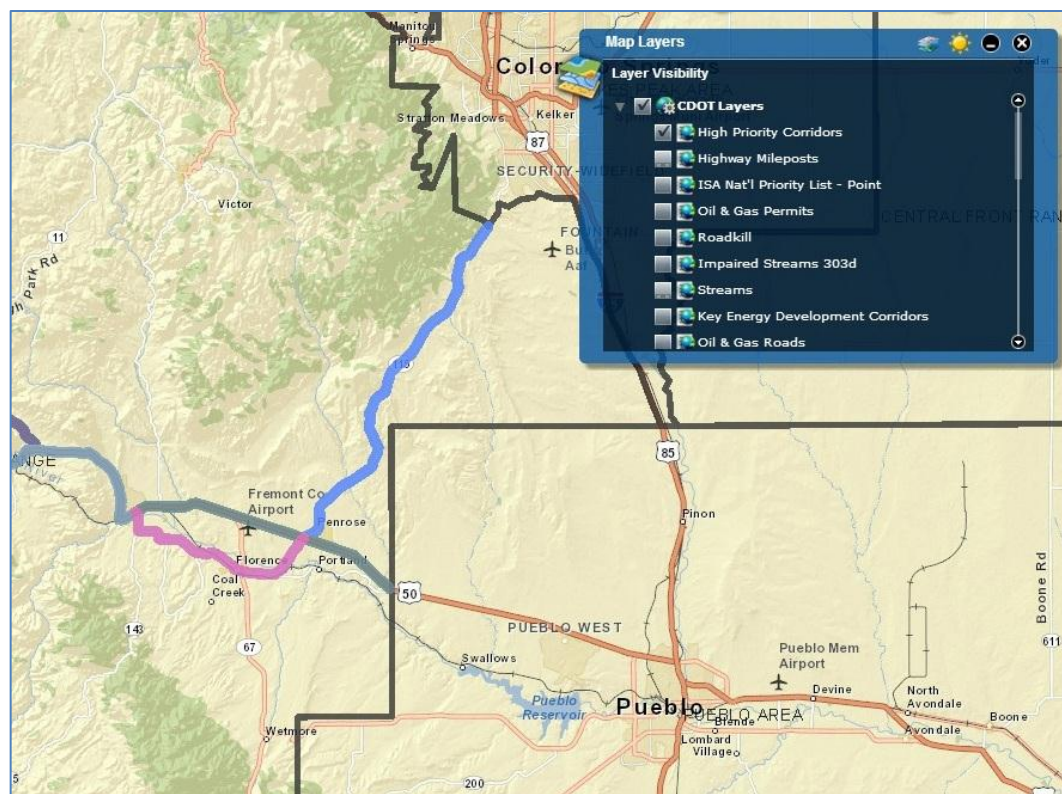
Using the PIN Tool





Using the PIN Tool

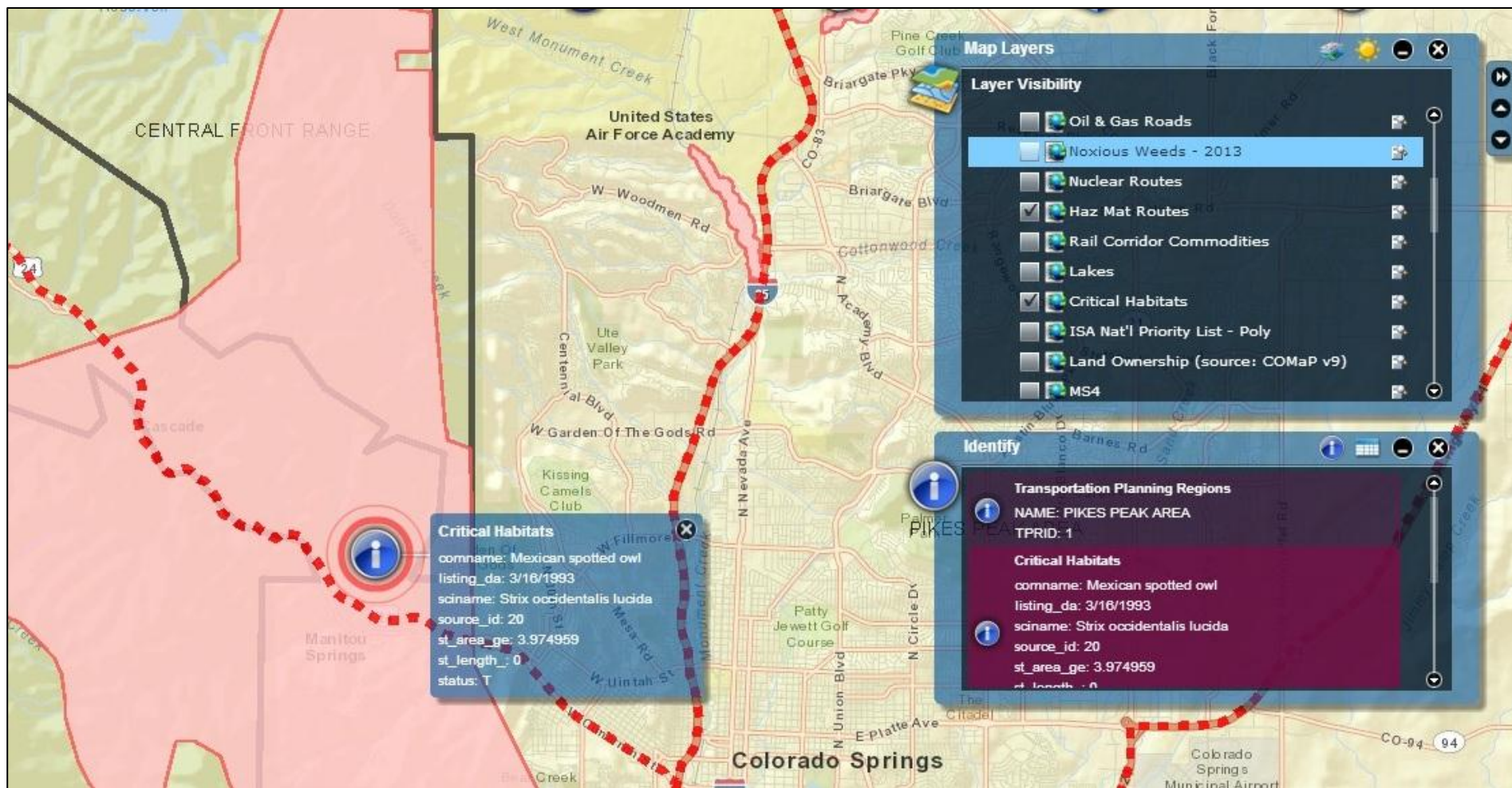
- In particular we are focusing this consultation exercise on the High Priority Corridors layer
- High Priority Corridors are those designated by the Transportation Planning Regions as being of high importance and likely candidates for future improvements.
- All comments are welcome, but please try to give these corridors added consideration





Using the PIN Tool

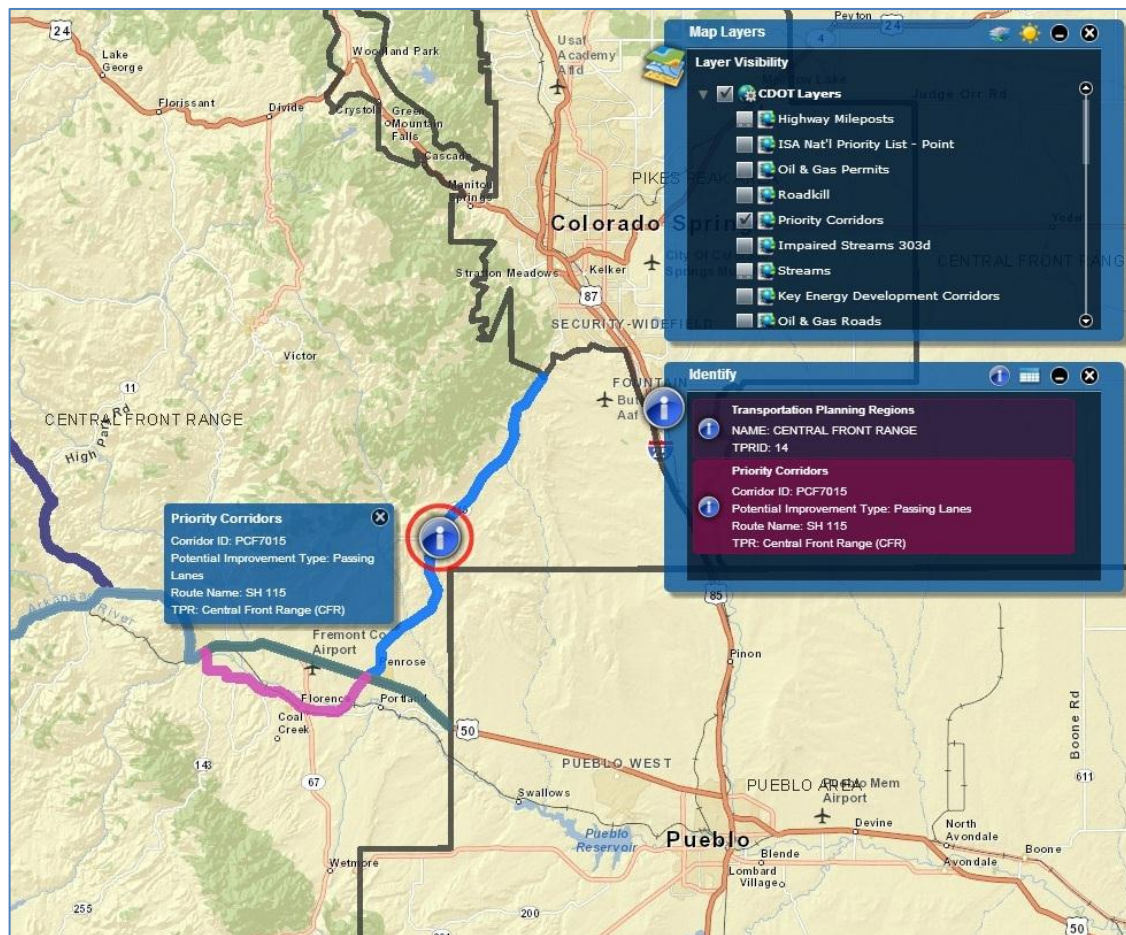
- Use the Identify button on the toolbar (small icons, far right) to learn more about a map feature





Using the PIN Tool

- Using the Identify button on a High Priority Corridor may include information on the type of improvement that may occur in the future



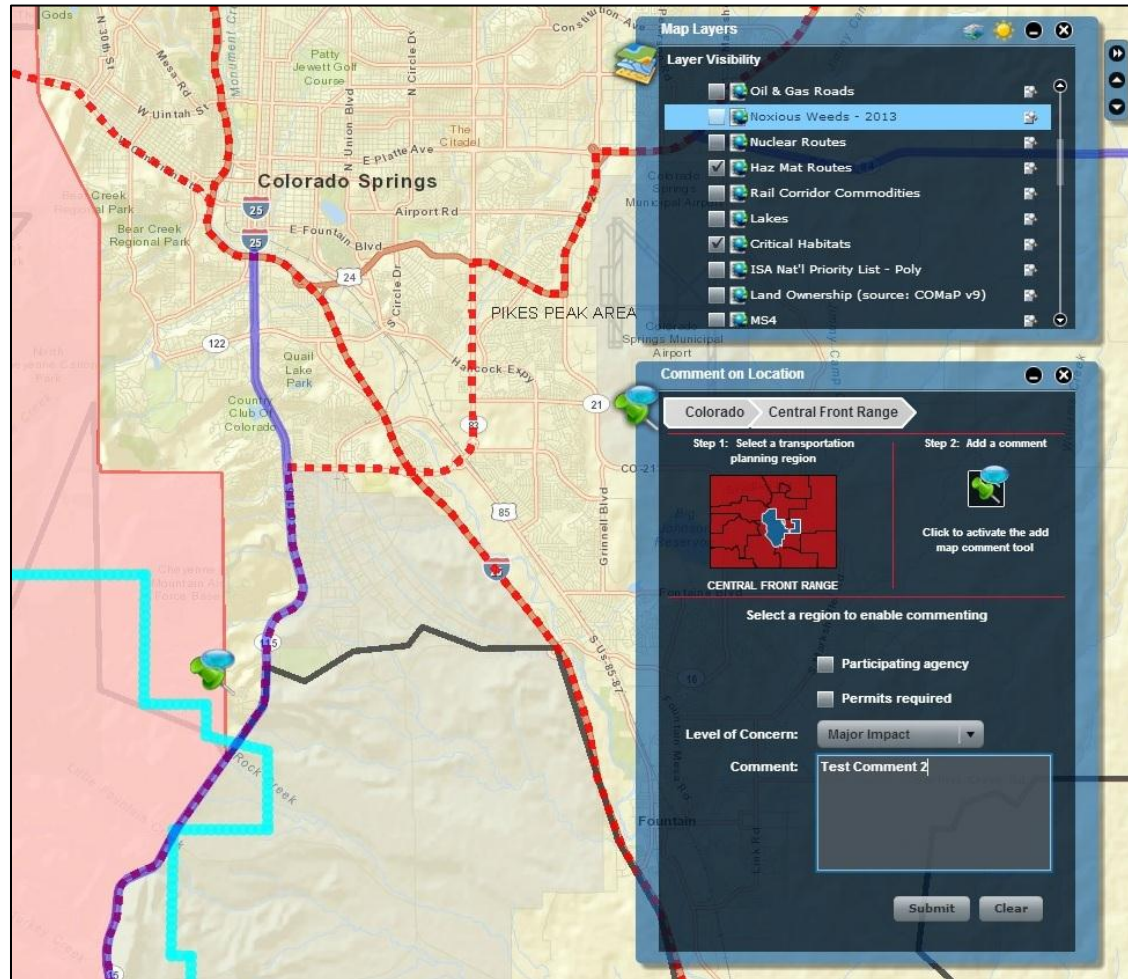
- For instance, this corridor says “Potential Improvement Type: Passing Lanes”
- Not all High Priority Corridors have potential improvement types listed, but they are still areas of potential future improvements and should be considered in that light



Using the PIN Tool

To comment on a specific location:

1. Click the Comment on Location button on the toolbar (small icons, third from the right)
2. Click on the Pin Icon
3. Select a location
4. Select a Level of Concern
5. Write a text comment
6. Click Submit





Using the PIN Tool

To view comments made by others:

1. Click the View Comments button on the toolbar (small icons, second from the right)
2. View the table of comments
3. Click the Magnifying Glass to zoom to the comment location
4. Comments can be sorted by Agency, Region, etc.

The screenshot shows a map of Colorado with various regions labeled, including PIKES PEAK AREA, COLORADO SPRINGS, SECURITY-WIDEFIELD, FOUNTAIN, PUEBLO AREA, and PUEBLO WEST. A blue comment box labeled 'Comment Test Comment' is visible on the map. A 'View Comments' table is overlaid on the map, showing a list of comments. A 'Map Layers' panel is also visible on the right side of the map.

Zoom	Agency	Comment	Region	Corridor
	CDOT	Test Comment		XY location
	CDOT	Test on US385	EASTERN	06009
	CDOT	069A	SOUTH CENTRAL	15006
	CDOT	Test SLV location		XY Location
	CDOT	Test NewMexico		XY Location
	CDOT	Test Southwest		XY Location
	CDOT	Test MesaVerde		XY Location
	CDOT	Test Parker SH83	GREATER DENVER AR	02007
	CDOT	Test 123		XY Location
	CDOT	Test 059	EASTERN	06007
	CDOT	Test Limon		XY Location
	CDOT	Bellewood		XY Location



Timeline for Commenting

- The comment period will last from 2/26/14 to 3/14/14
- You may return as often as you like between these dates to make new comments, read comments made by others, and respond to input from other agencies
- We encourage you to visit on multiple occasions in order to establish a dialogue between participating agencies



Questions / Comments

Contact:

Michael King
Colorado Department of Transportation
(303) 757-9997
michael.king@state.co.us

