



**COLORADO**

Department of  
Transportation



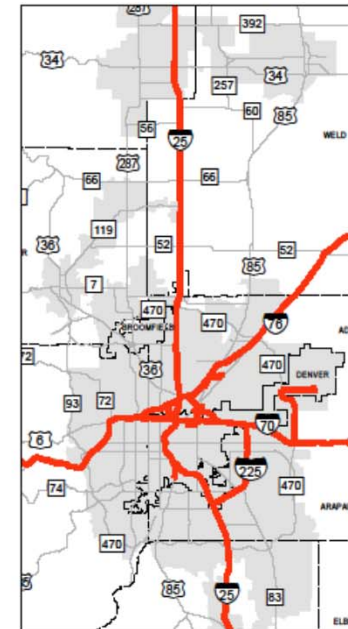
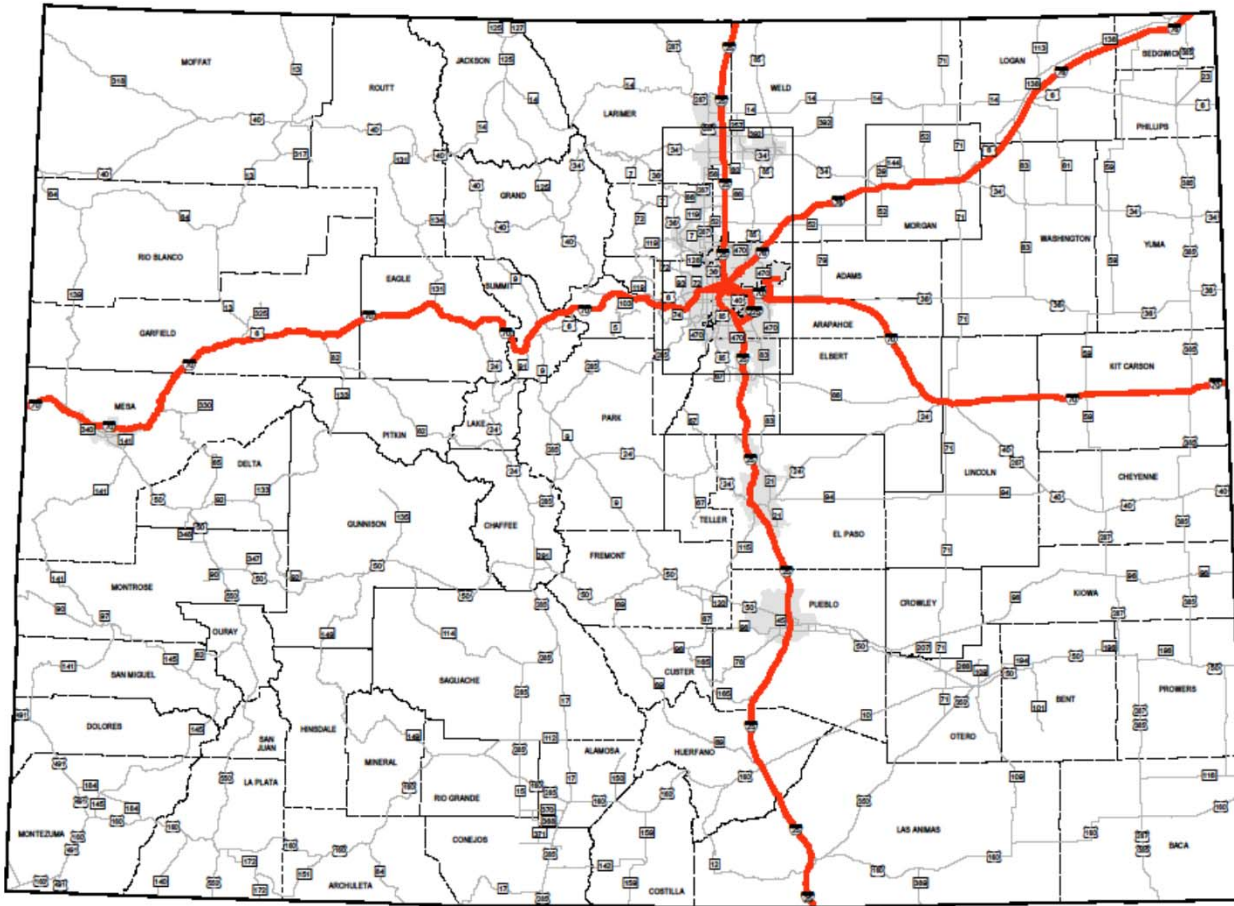
# Critical Rural and Urban Freight Corridors

August 2016

## National Highway Freight Network (NHFN)

---

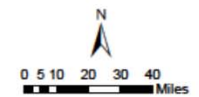
- Established by FAST Act to “strategically direct resources and policies toward improved performance of highway portions of the U.S. freight transportation system.”
- Includes the following subsystems:
  - *Primary Highway Freight System (PHFS)* – Identified by FHWA as most critical highway portions of U.S. freight transportation system
  - *Other Interstate Portions not on the PHFS*
  - *Critical Freight Corridors* – Public roads which provide access and connection to the PHFS and the Interstate with other important ports, public transportation facilities, or intermodal freight facilities.
    - *Critical Rural Freight Corridors (CRFCs)* – Not in an urbanized area > 50,000
    - *Critical Urban Freight Corridors (CUFCs)* – In an urbanized area > 50,000
- A project must be on the NHFN in order to be eligible for funding under the new formula freight program- the National Highway Freight Program (NHFP).



- National Highway Freight Network
- Highways
- - - Counties
- Urban Areas (Pop. > 50,000)



## National Highway Freight Network Map 1



Primary Highway Freight System (PHFS)			
Route No	Start Point	End Point	Miles
I-225	I-25	I-70	12.13
I-25	NM/CO Line	CO/WY Line	299
I-270	I-76	I-70	4.95
I-70	UT/CO Line	CO/KS Line	451.46
I-76	I-70	CO/NE Line	12.38
SH 2	CO12R	I-70	0.28
E-470	CO22A	I-70	7.33
US 6	CO11L	I-270	0.33
US 85	I25	2.08 Miles South of I-25	2.08
<b>TOTAL</b>			<b>789.94</b>

Non PHFS Interstate			
Route No	Start Point	End Point	Miles
I-270	I-25	I-76	1.08
I-76	US 85	CO/NE Line	171.59
<b>TOTAL</b>			<b>172.67</b>

### Colorado National Highway Freight Network

- Total: 1,217.17 miles
  - PHFS: 789.94
  - PHFS Intermodal Connectors: 13.52
  - Non-PHFS Interstates: 172.67
  - CRFC: 160.69
  - CUFC: 80.35

PHFS Intermodal Connectors			
Facility ID	Facility Name	Facility Description	Miles
CO10R	Burlington Northern RR Transfer Facility	53rd Pl. to Broadway to 58th Ave (S.H. 53) to I- 25	0.98
CO11L	Conoco Pipeline Transfer	From U.S. 6: W 0.8 mi on 56th Avenue to Terminal Entrance at Brighton Blvd (S.H. 265)	0.83
CO12R	Union Pacific RR Transfer Facility	From S.H. 2 (Colorado Blvd): W 1.4 mi on 40th Ave to terminal entrance at Williams Street	1.45
CO22A	Denver International Airport	Pena Blvd (E 470 interchange E 0.7mi)	5.1
CO6R	Union Pacific RR Auto Transfer	From I-76: E 0.1 mi on 96th Ave, N 1.0 mi on I-76 Frontage Road to Terminal Entrance	0.48
CO7R	Burlington Northern RR Auto Transfer	From I-76: E 1.7 mi on 88th Ave, N 0.2 mi on Yosemite Ave to terminal entrance	1.66
CO8L	Kaneb Pipeline Transfer	From I-76: E 0.1 mi on 88th Ave, S 1.2 mi on Brighton Rd, E 0.3 mi on 80th St to entr at Krameria St.	1.91
CO9R	Southern Pacific RR Transfer Facility	From I-76: South on Pecos Street to Terminal Entrance at 56th Avenue	1.09
<b>TOTAL</b>			<b>13.52</b>

# Critical Freight Corridors

---

- Critical Rural Freight Corridors (CRFC)
  - 160.69 miles, designated by the State
  - Outside of Adjusted Urbanized Area Boundaries > 50,000
  - Must meet one of several criteria
  - Can be updated as priorities change, projects are completed, etc.
- Critical Urban Freight Corridors (CUFC)
  - 80.35 miles, designated by the State in consultation with MPO, or designated by the MPO in consultation with the State (for MPOs > 500,000)
  - Inside Adjusted Urbanized Area Boundaries > 50,000
  - Must meet one of several criteria
  - States and MPOs determine how to distribute mileage
  - Can be updated as priorities change, projects are completed, etc.

## Critical Freight Corridors

---

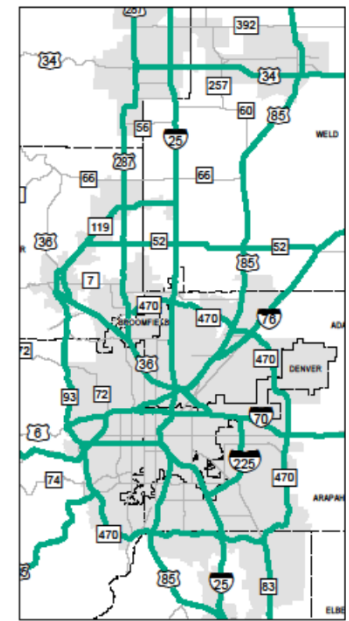
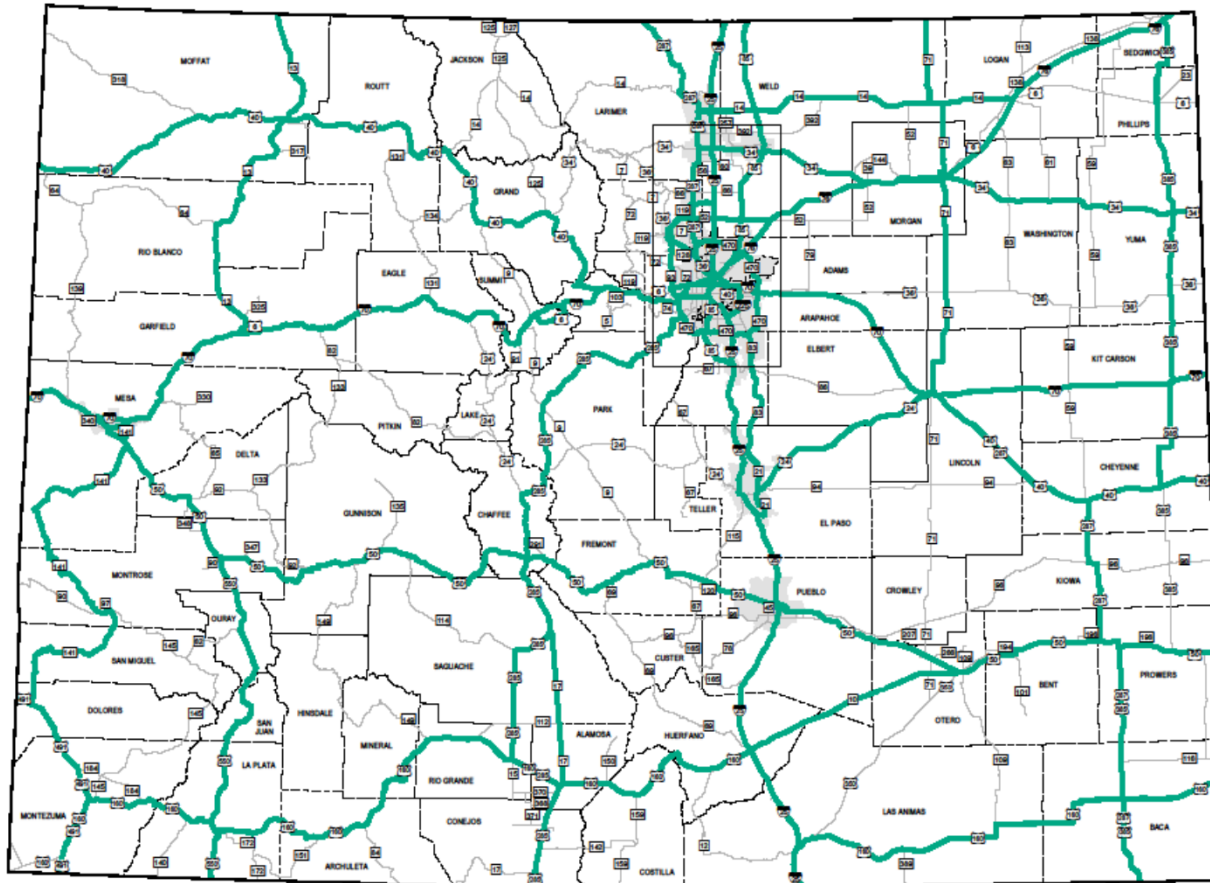
- Identify corridors based on areas of greatest freight need/priority
- Use Colorado Freight Corridors identified in the State Highway Freight Plan as starting point
  - Starting point, not limited to
  - Less comprehensive of freight needs in metro areas
- Identify smaller corridor segments rather than entire corridors
- Review and solicit input on potential corridor segments from TPRs, MPOs, STAC, and FAC
- Align with project selection for National Highway Freight Program
- Submit initial designations to FHWA
- Conduct further analysis as part of Multimodal Freight Plan development
- Update annually

## National Highway Freight Program

---

- Provides formula funds to the States to improve the efficient movement of freight on the National Highway Freight Network (NHFN)
- Approximately \$15 million to Colorado annually, beginning in FY 16
- Project must be on the NHFN, or be a freight intermodal or freight rail project
- Wide-range of eligible activities
- Project selection for FY 16-17 planned this fall, in alignment with corridor identification
- Long-term approach to the NHFP, including vision/goals for freight investment, identification of needs, criteria, project selection process, and priorities to be developed as part of Multimodal Freight Plan in 2016-2017.

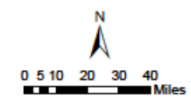




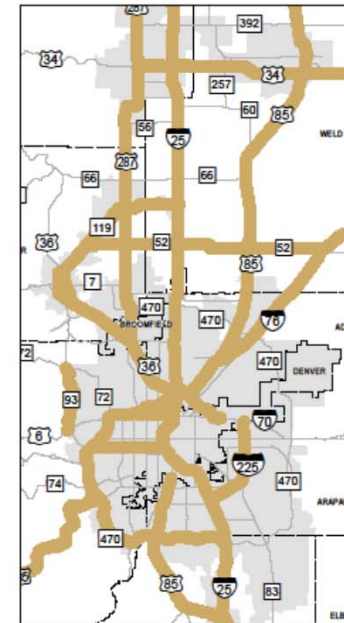
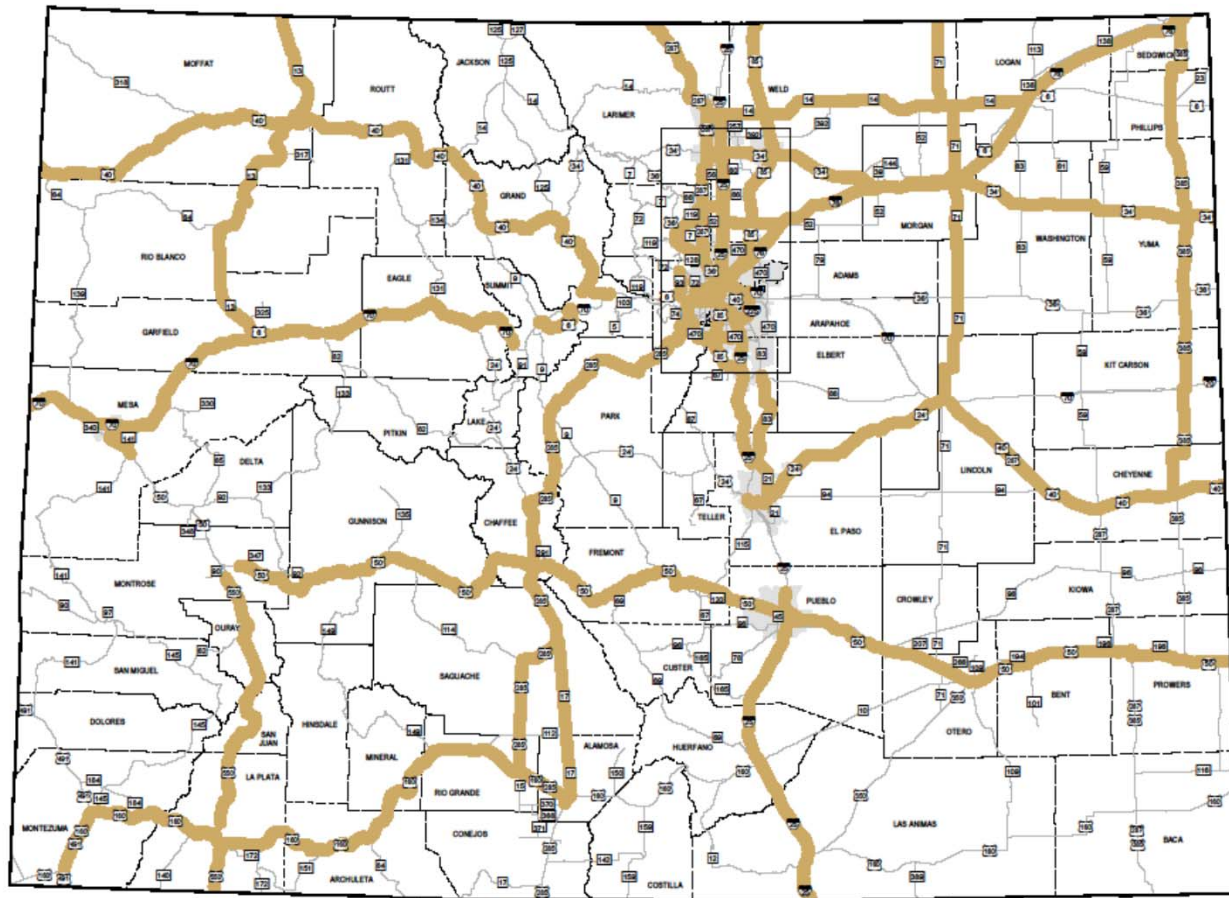
- Colorado Freight Corridors
- Highways
- - - Counties
- Urban Areas (Pop. > 50,000)



## Colorado Freight Corridors Map 2



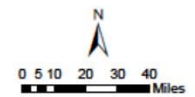


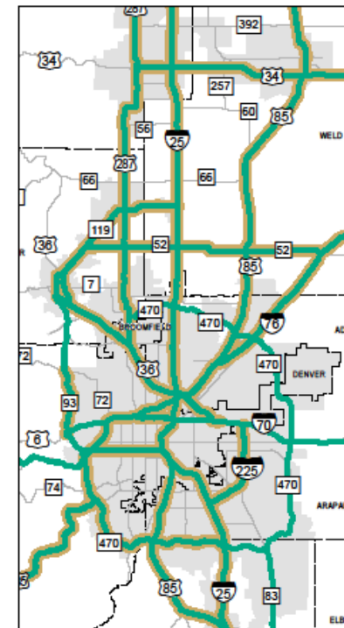
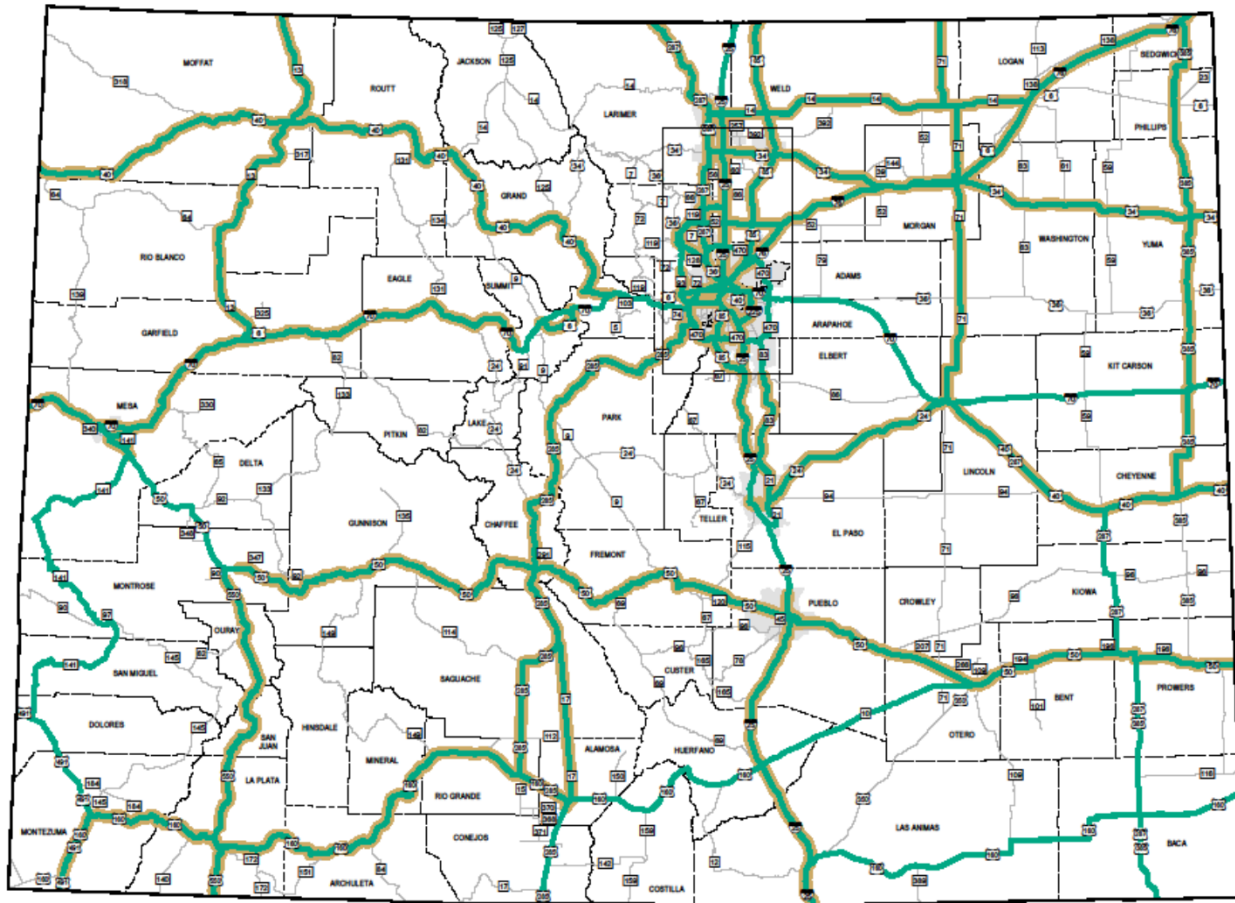


-  Freight Project Areas
-  Highways
-  Counties
-  Urban Areas (Pop. > 50,000)



### Freight Project Areas Map 3

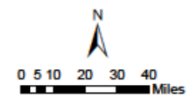


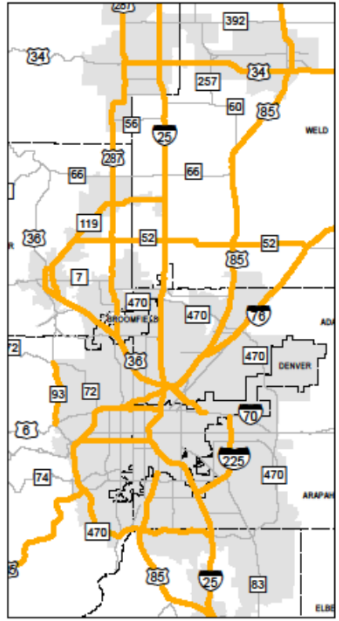
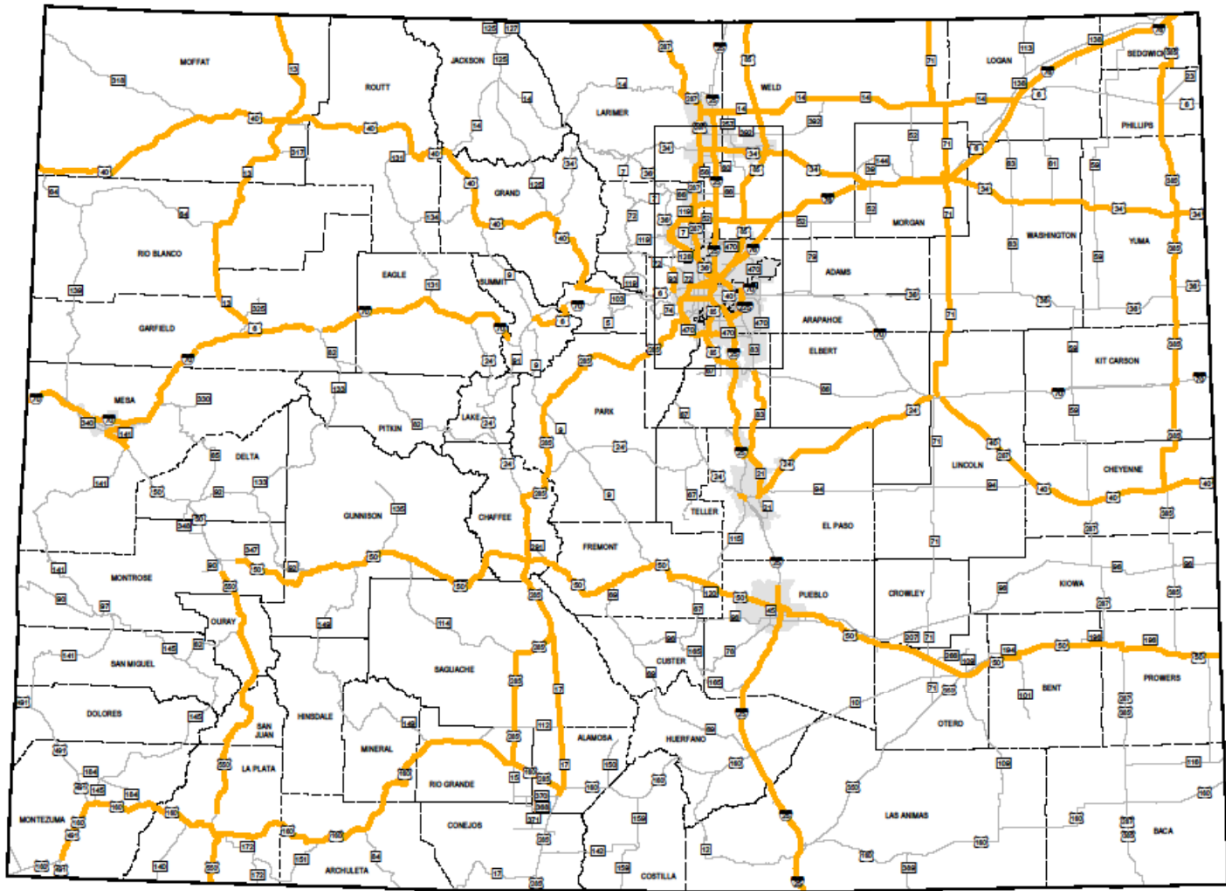




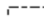

-  Colorado Freight Corridors
-  Freight Project Areas
-  Highways
-  Counties
-  Urban Areas (Pop. > 50,000)



**Colorado Freight Corridors and Freight Project Areas**  
Map 4

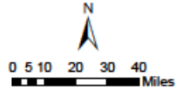




-  Corridors of Interest
-  Highways
-  Counties
-  Urban Areas (Pop. > 50,000)



**Colorado Freight Corridors with Freight Project Areas**  
**Map 5**



## Additional Resources

---

National Highway Freight Network

<http://ops.fhwa.dot.gov/freight/infrastructure/nfn/index.htm>

Critical Corridors Guidance

[http://ops.fhwa.dot.gov/fastact/crhc/sec\\_1116\\_gdnce.htm](http://ops.fhwa.dot.gov/fastact/crhc/sec_1116_gdnce.htm)

National Highway Freight Program

[http://www.ops.fhwa.dot.gov/freight/pol\\_plng\\_finance/policy/fastact/s1116nhfpguidance/](http://www.ops.fhwa.dot.gov/freight/pol_plng_finance/policy/fastact/s1116nhfpguidance/)

CDOT Multimodal Planning Branch - Freight Planning

<https://www.codot.gov/programs/planning/planning-programs/freight-program>

State Highway Freight Plan

<http://coloradotransportationmatters.com/other-cdot-plans/freight/>