

Co-Creating a Regional Vision for People & Nature

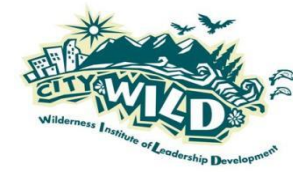




MetroDNA

METRO DENVER NATURE ALLIANCE

Align nature-based efforts to ensure more equitable access to nature and to promote healthy people, communities, and natural places.



SUPPORTING A THRIVING REGION FOR PEOPLE AND NATURE

**Regional
Outcomes**

Improved
Water & Air
Quality

Species
Preservation &
Restoration

Equitable
Access to
Recreation &
Nature

Stable /
Decreased
Greenhouse
Gas Emissions

Decreased
Mitigation &
Restoration
Costs

Shrinking
Inequality Gap

SUPPORTING A THRIVING REGION FOR PEOPLE AND NATURE

REGIONAL VISION FOR PEOPLE + NATURE

Create an equitable vision and diverse, committed coalition in support of a dynamic and applicable set of regional goals for nature, natural infrastructure, access, and land use for the Metro Denver region

Regional Outcomes

- Improved Water & Air Quality
- Species Preservation & Restoration
- Equitable Access to Recreation & Nature
- Stable / Decreased Greenhouse Gas Emissions
- Decreased Mitigation & Restoration Costs
- Shrinking Inequality Gap

SUPPORTING A THRIVING REGION FOR PEOPLE AND NATURE

NATURAL HABITAT & CONNECTIVITY

Regional Conservation Assessment

- Science-Driven Assessment & Map of Priority Areas to Protect, Connect, Restore, and Enhance
- Close Coordination with Land Managers & Decision Makers

REGIONAL VISION FOR PEOPLE + NATURE

Create an equitable vision and diverse, committed coalition in support of a dynamic and applicable set of regional goals for nature, natural infrastructure, access, and land use for the Metro Denver region

Regional Outcomes

- Improved Water & Air Quality
- Species Preservation & Restoration
- Equitable Access to Recreation & Nature
- Stable / Decreased Greenhouse Gas Emissions
- Decreased Mitigation & Restoration Costs
- Shrinking Inequality Gap

SUPPORTING A THRIVING REGION FOR PEOPLE AND NATURE

NATURAL HABITAT & CONNECTIVITY

Regional Conservation Assessment

- Science-Driven Assessment & Map of Priority Areas to Protect, Connect, Restore, and Enhance
- Close Coordination with Land Managers & Decision Makers

SOCIAL VULNERABILITY & ACCESS TO NATURE

Regional Equity Assessment

- Socioeconomic Status
- Household Composition & Disability
- Minority Stat. & Linguistic Isolation
- Housing & Transportation
- 10-Minute Walk to a Park

REGIONAL VISION FOR PEOPLE + NATURE

Create an equitable vision and diverse, committed coalition in support of a dynamic and applicable set of regional goals for nature, natural infrastructure, access, and land use for the Metro Denver region

Regional Outcomes

- Improved Water & Air Quality
- Species Preservation & Restoration
- Equitable Access to Recreation & Nature
- Stable / Decreased Greenhouse Gas Emissions
- Decreased Mitigation & Restoration Costs
- Shrinking Inequality Gap

SUPPORTING A THRIVING REGION FOR PEOPLE AND NATURE

NATURAL HABITAT & CONNECTIVITY

Regional Conservation Assessment

- Science-Driven Assessment & Map of Priority Areas to Protect, Connect, Restore, and Enhance
- Close Coordination with Land Managers & Decision Makers

LEADERSHIP COUNCIL

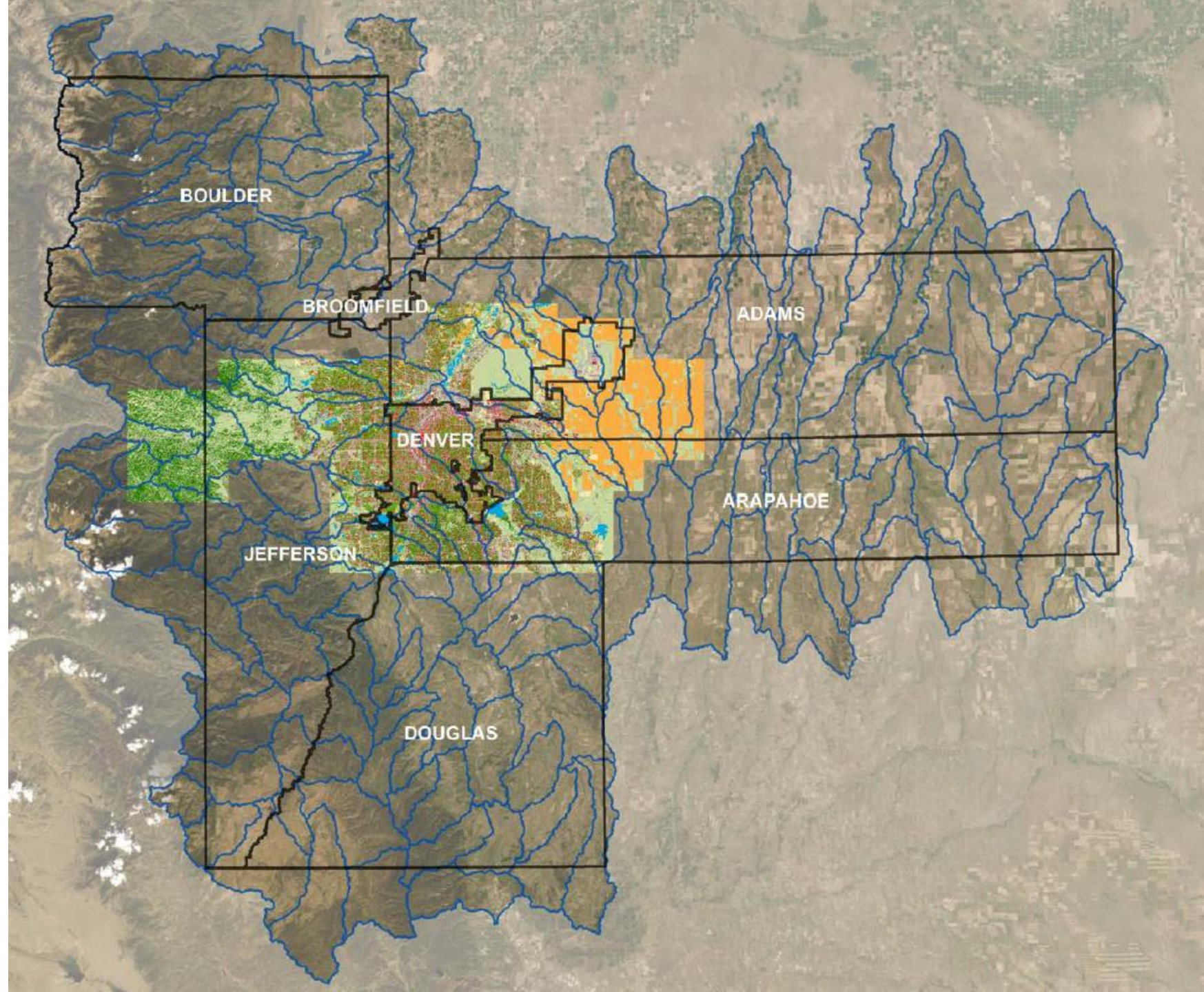
- 12-15 Leaders of key land and water organizations
- All seven-county open space programs
- Federal: US Fish & Wildlife, US Forest Service
- Colorado Parks & Wildlife
- Mile High Flood District
- Multiple Front Range Cities

TECHNICAL ADVISORY TEAM

- 15-20 Ecologists, applied biologists, and other science representations
- Critical to guiding and the technical analysis
- Helpful in building network and crafting end products
- Meet 4-5 times per year

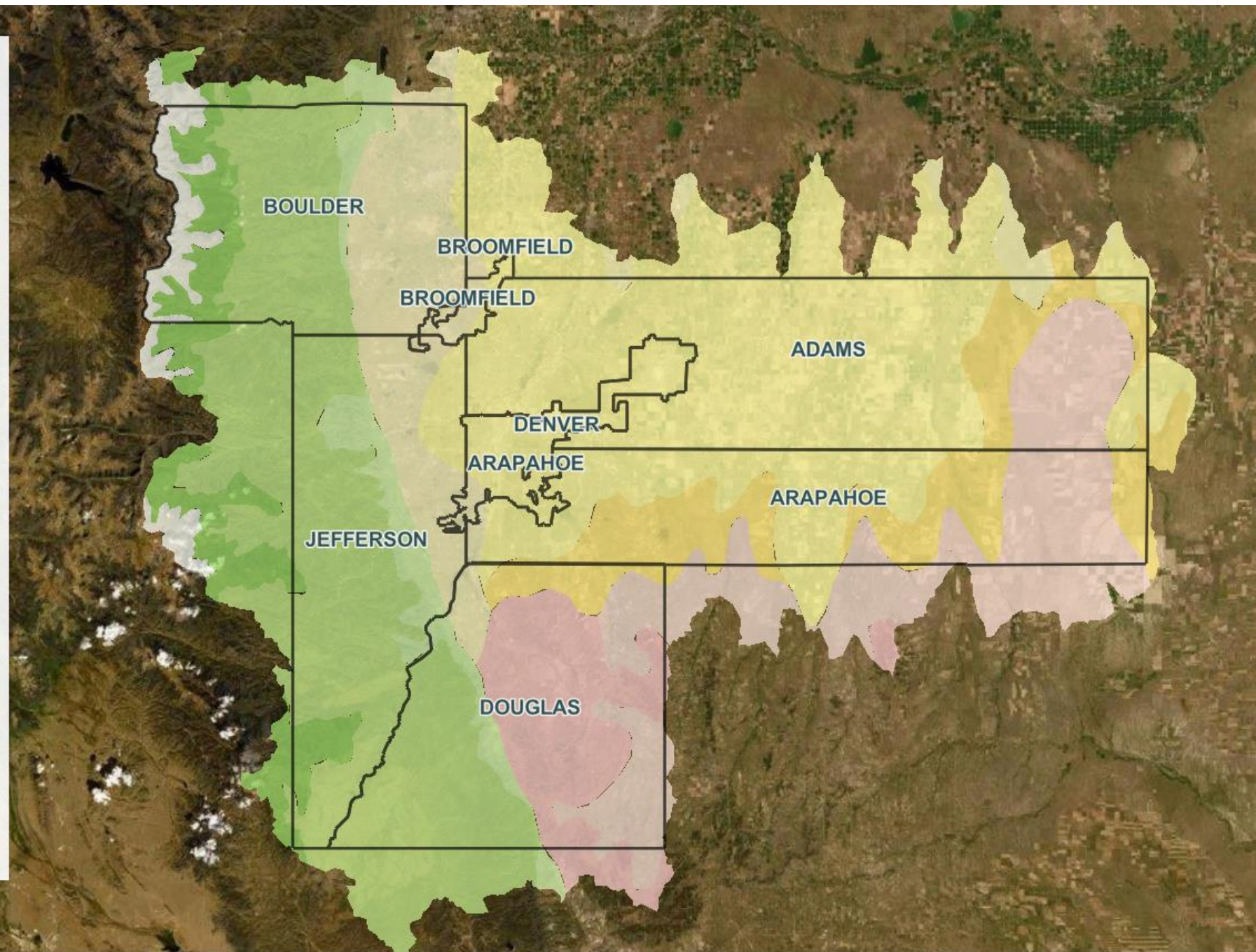
Regional Conservation Assessment

Ecological and
connectivity
analysis for
seven-county +
watershed
Metro Denver
area

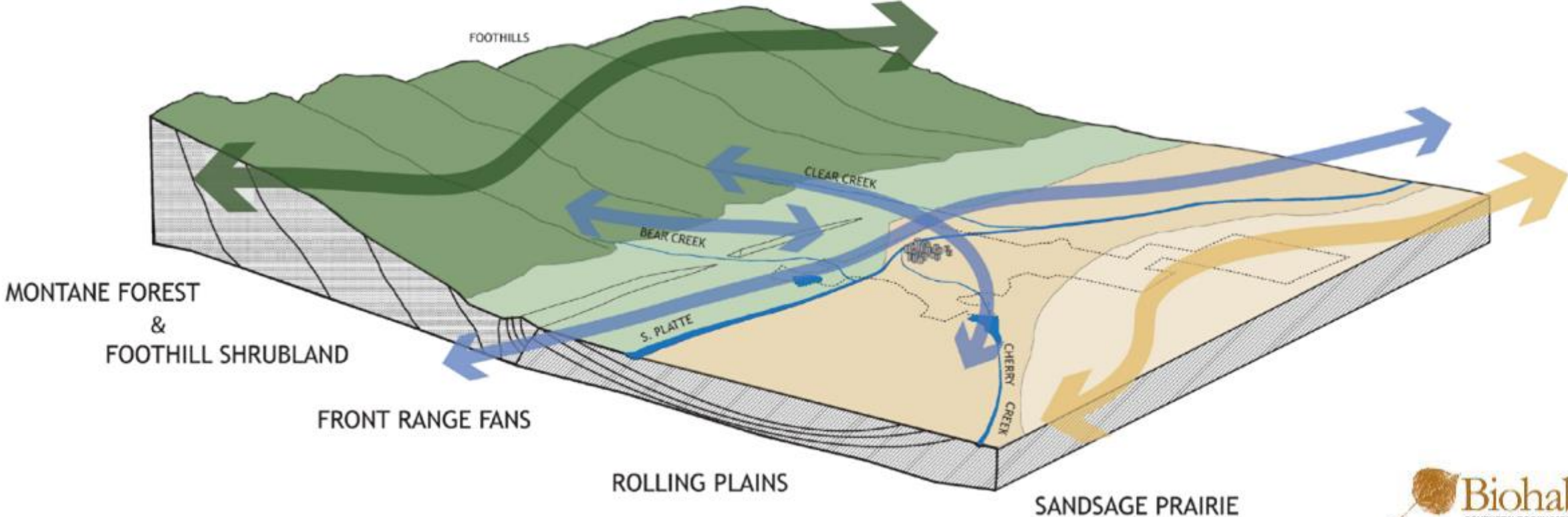


EPA Level IV Ecoregions (West to East)

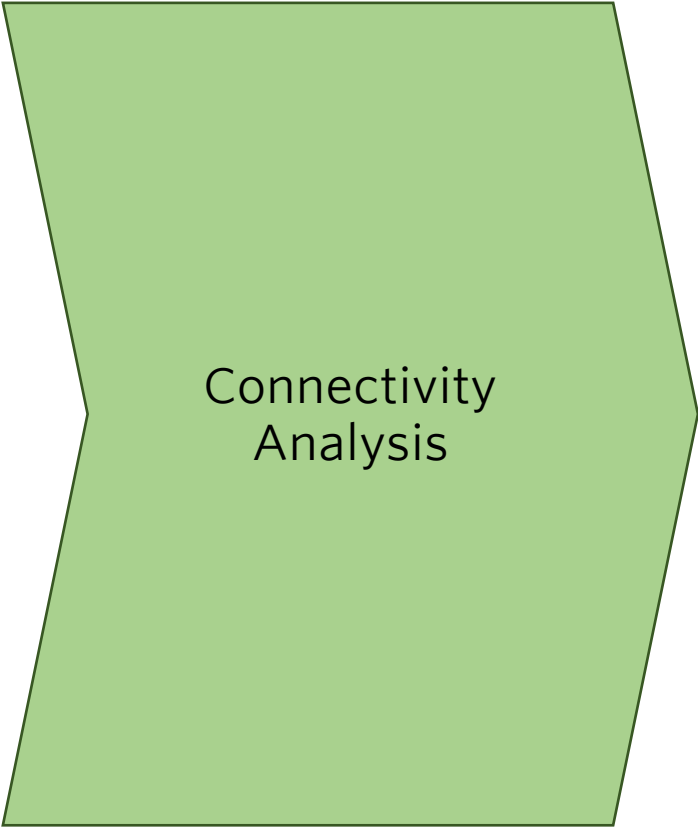
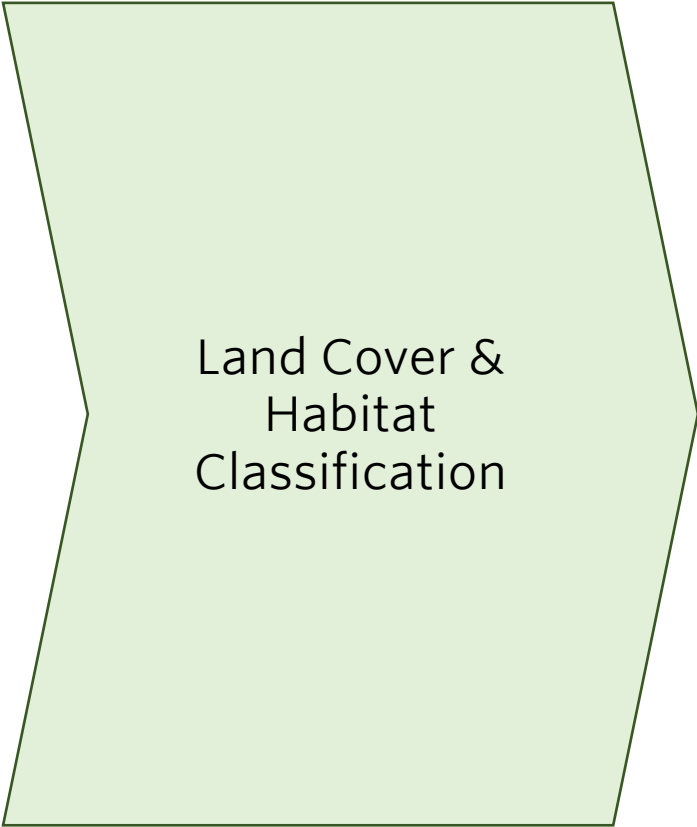
- Alpine
- Crystalline Sub-alpine Forests
- Crystalline Mid-Elevation Forests
- Foothill Shrublands
- Front Range Fans
- Moderate Relief Plains
- Pine-Oak Woodlands
- Flat to Rolling Plains
- Piedmont Plains and Tablelands
- Foothill Grasslands
- Rolling Sand Plains



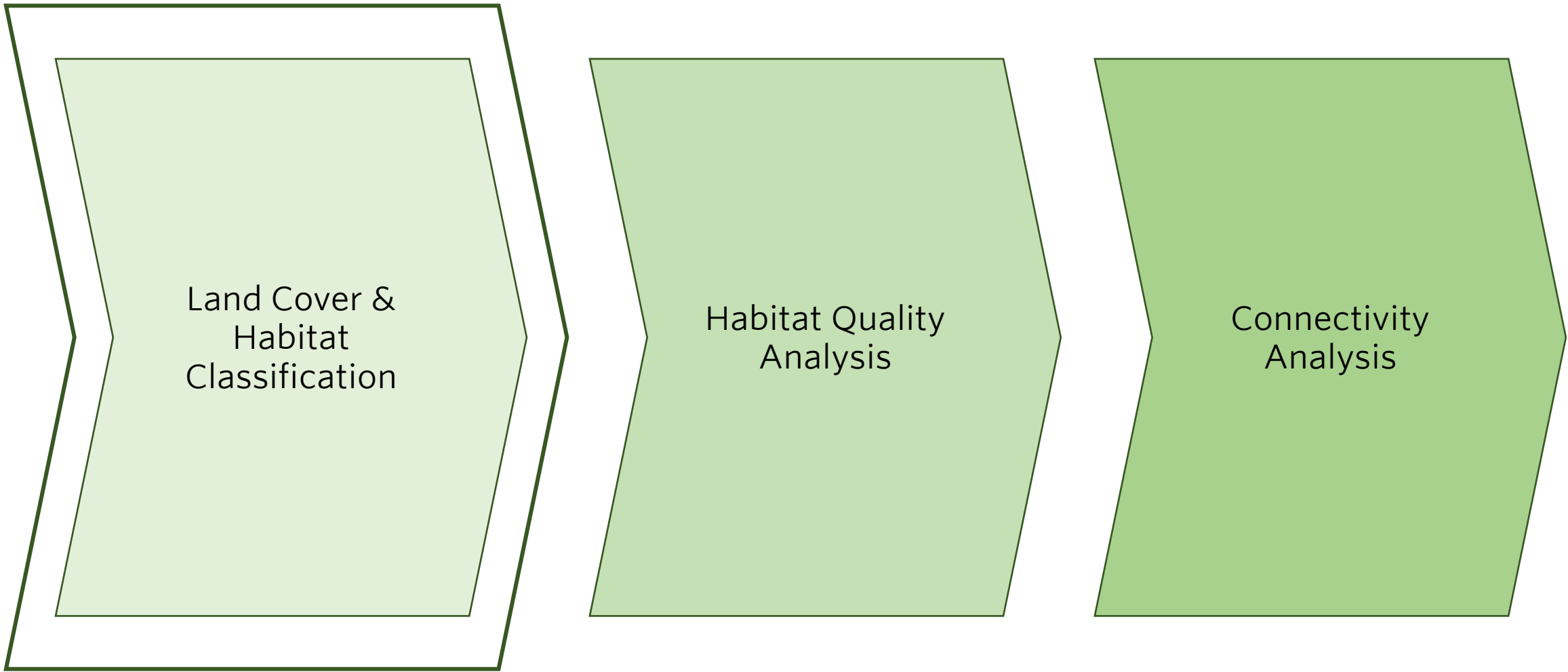
Regional Planning Framework & Ecoregions



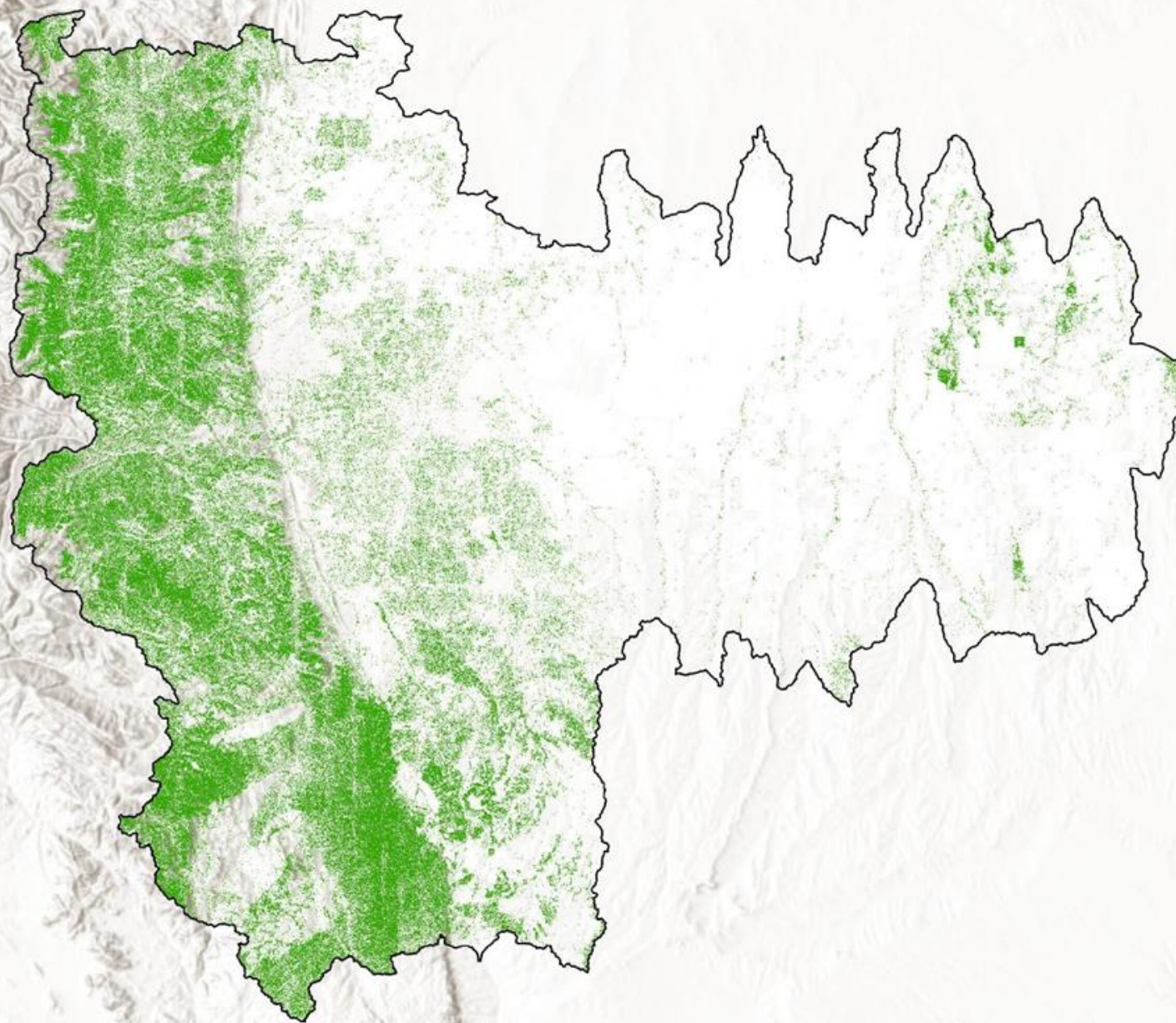
High-Level RCA Project Pathway



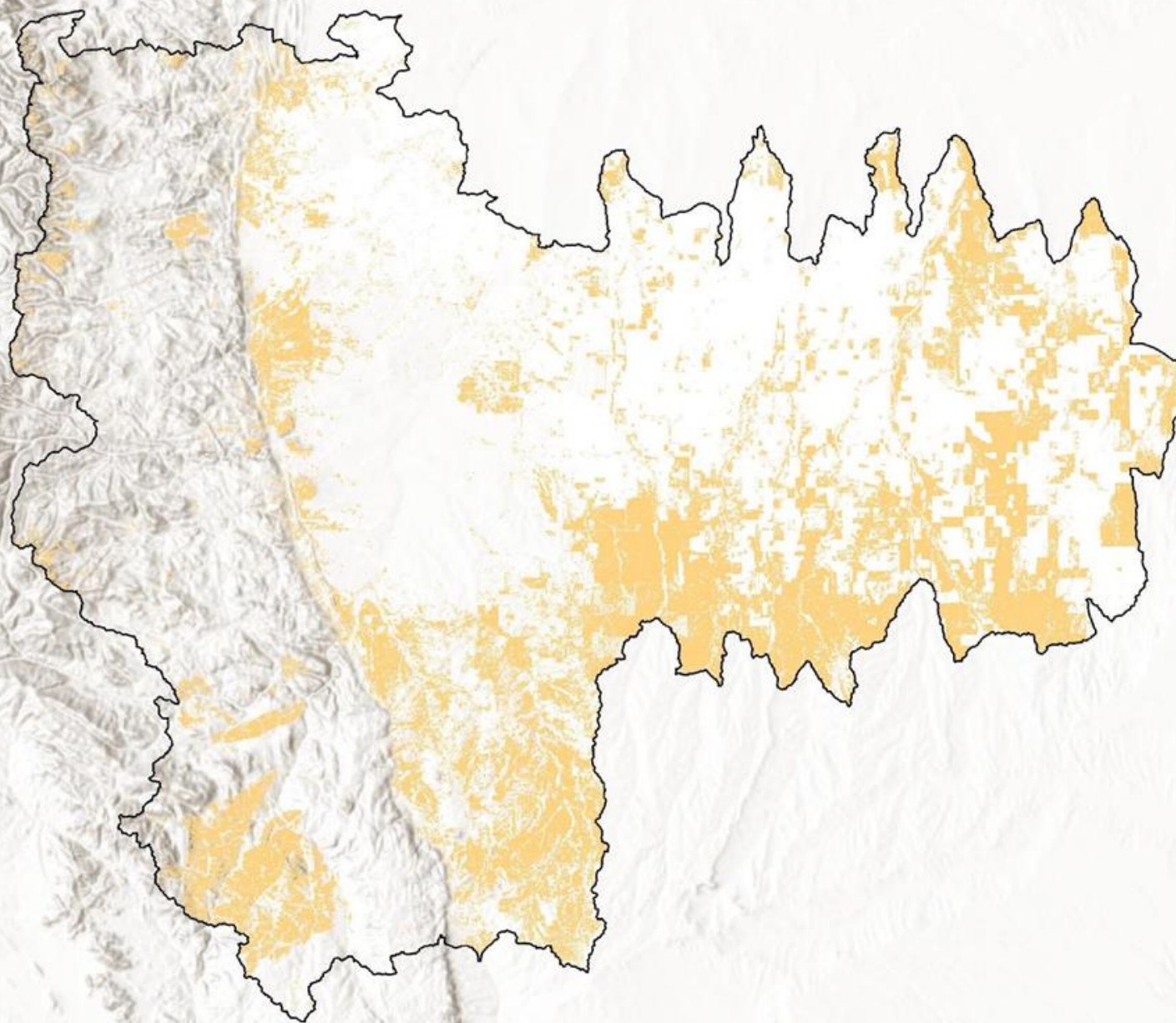
High-Level RCA Project Pathway



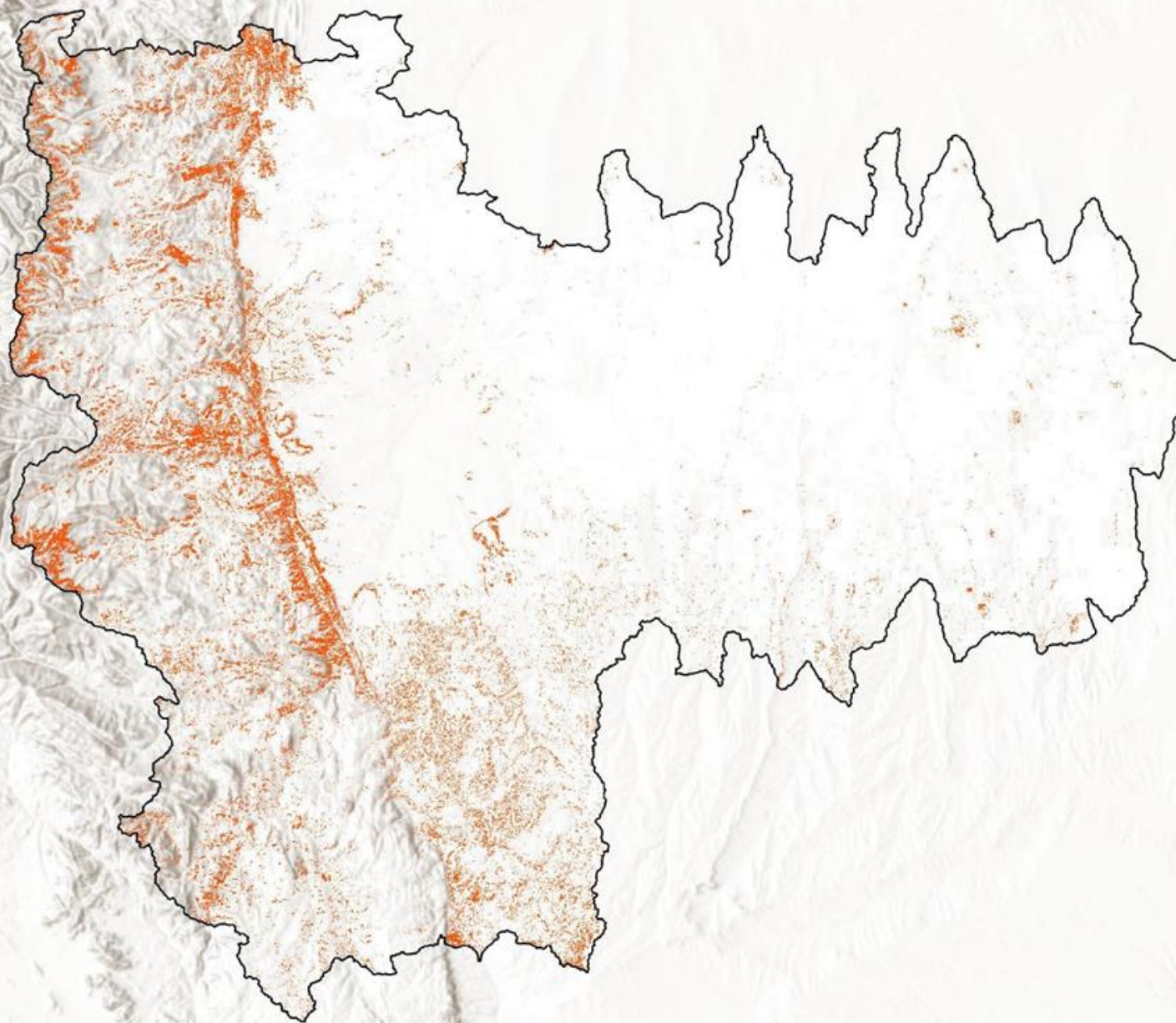
Forest



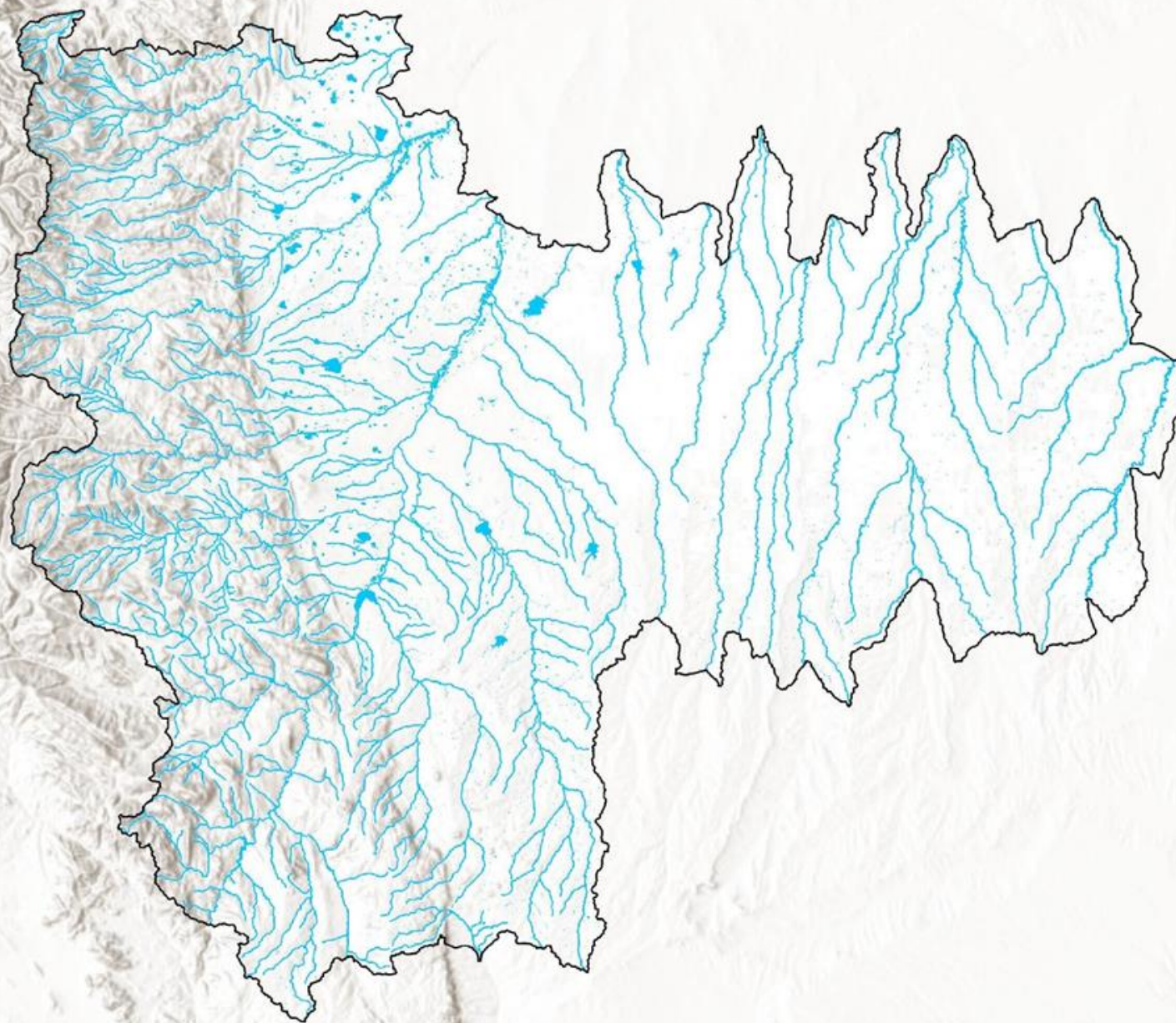
Grasslands



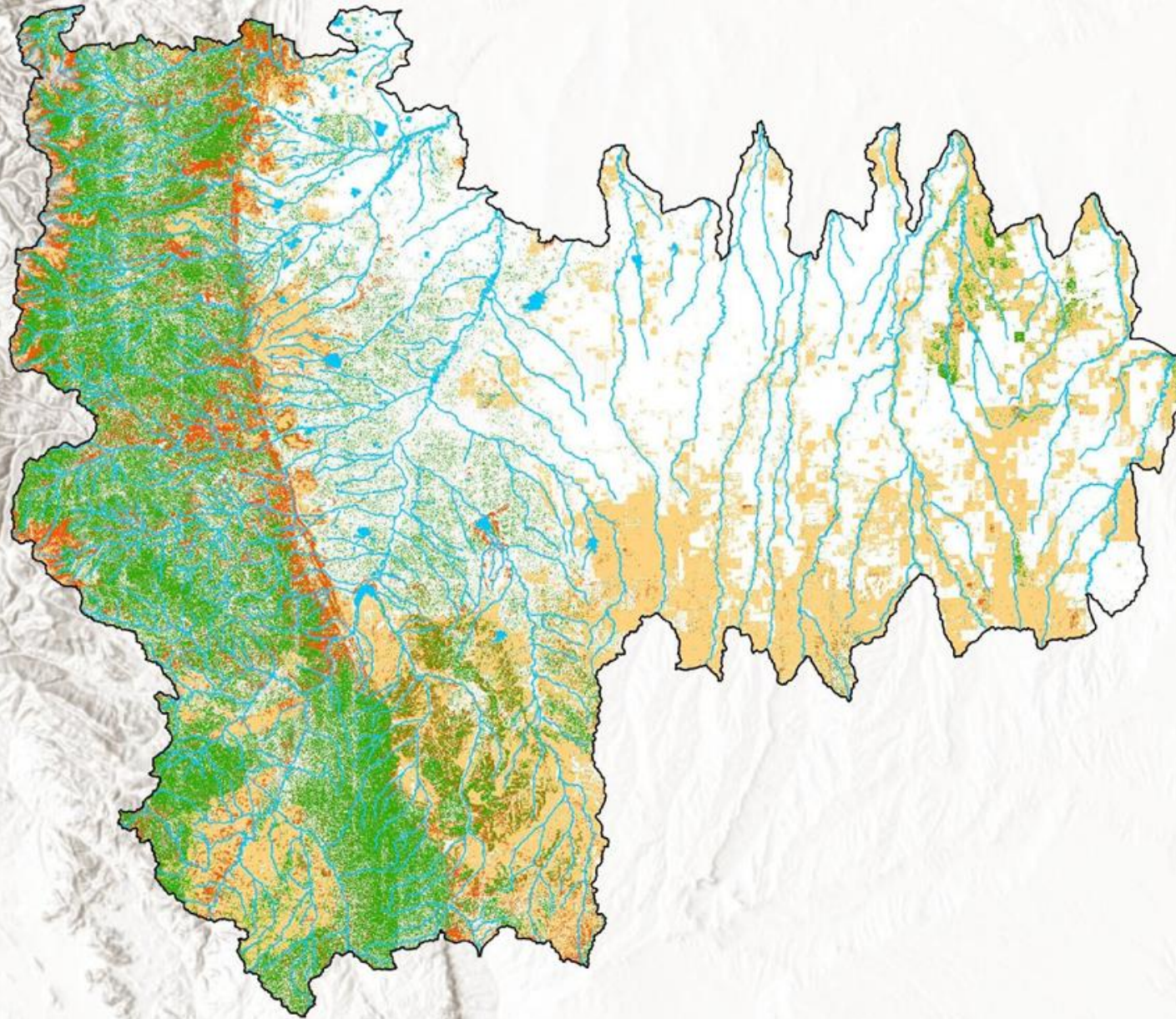
Shrubland



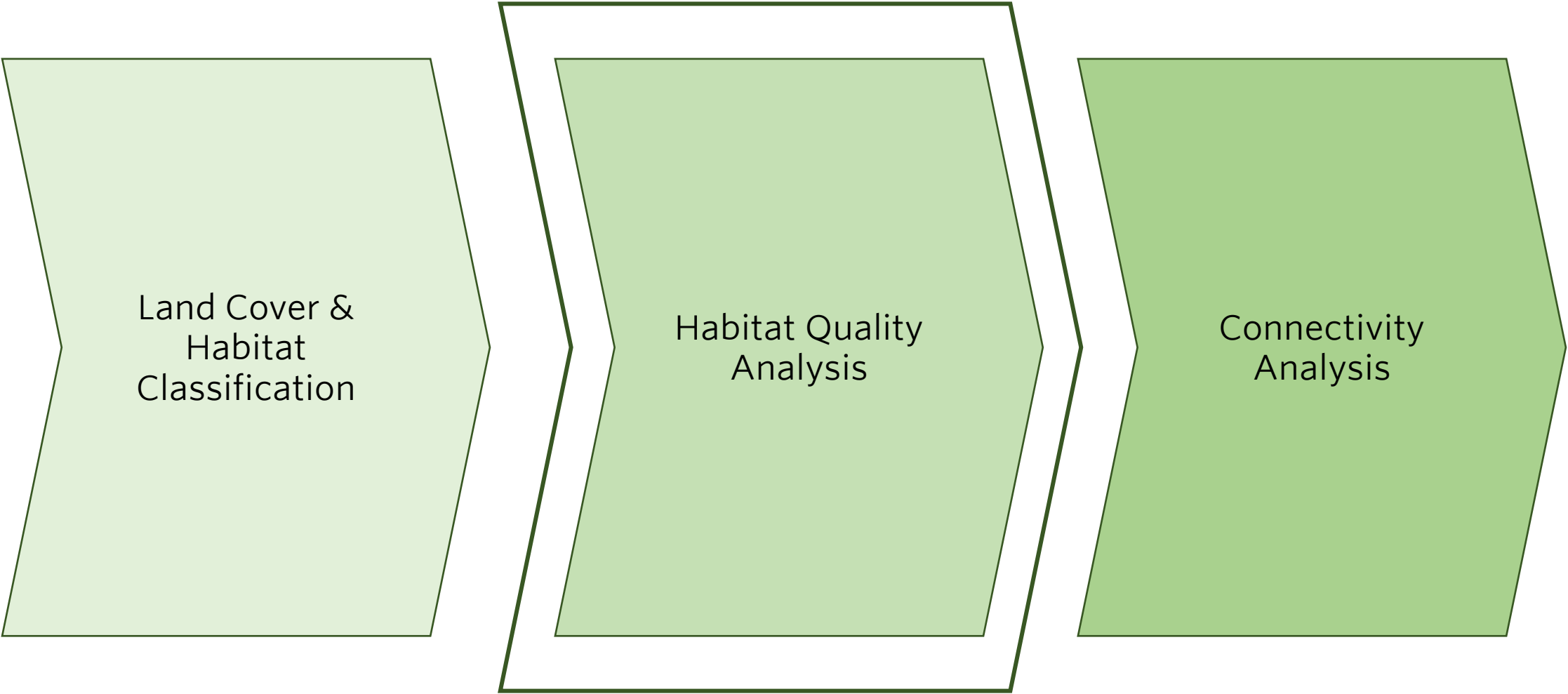
Wetlands & Riparian



All Layers

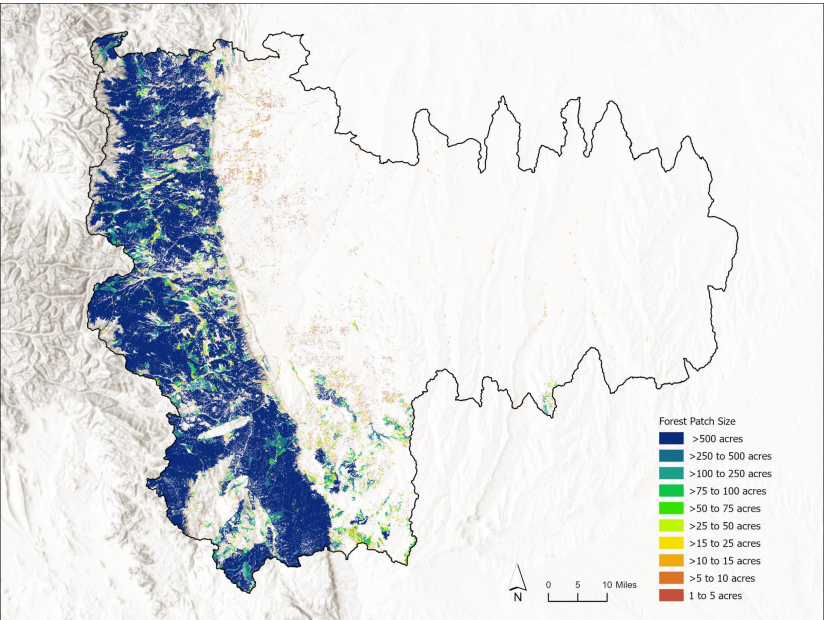


High-Level RCA Project Pathway

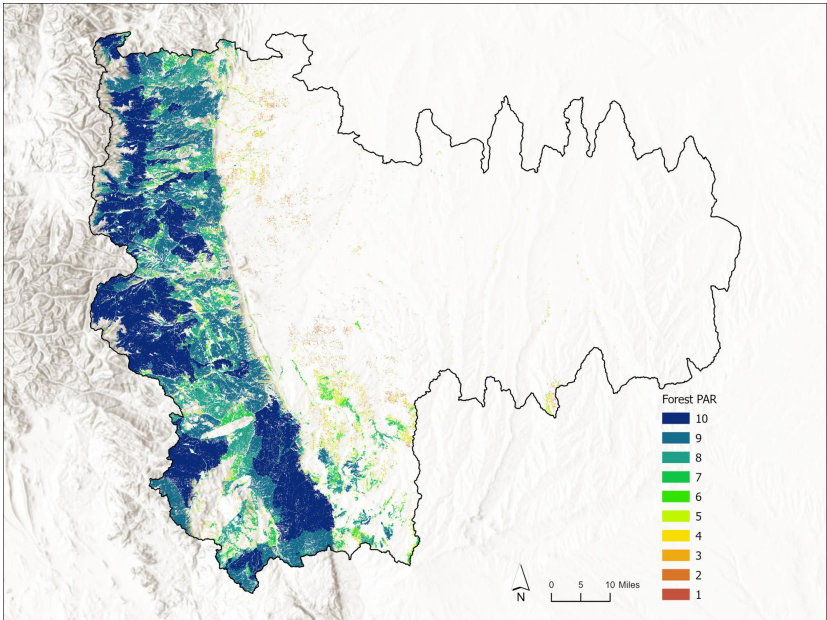


Forest Indicators

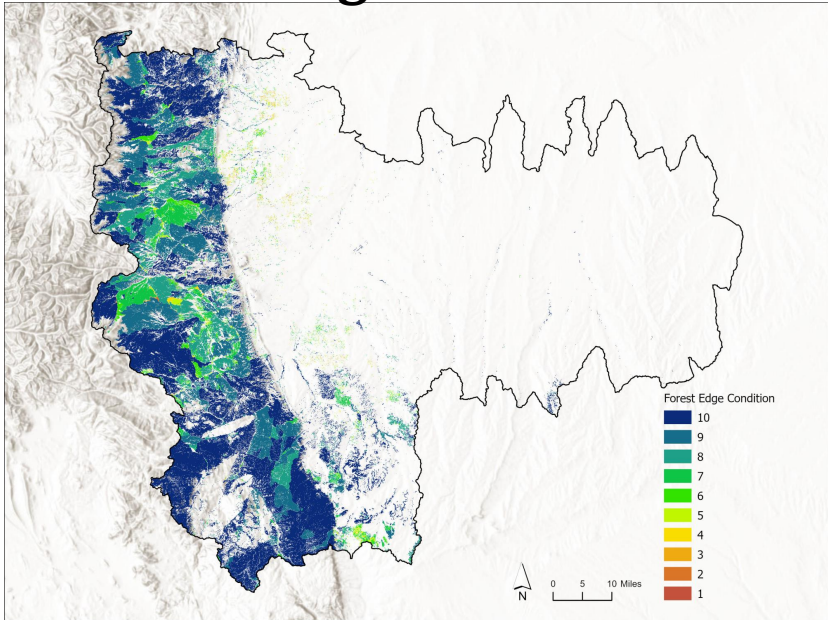
A: Patch Size



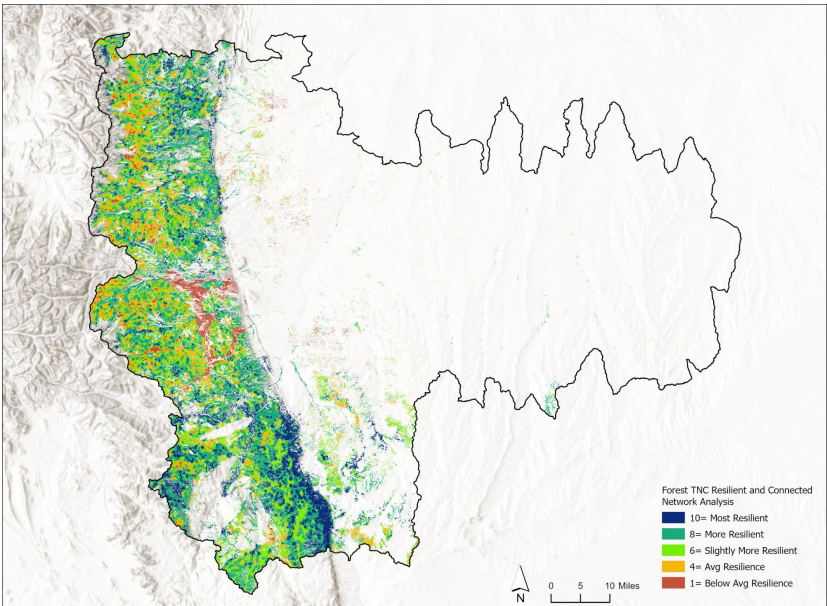
B: Perimeter Area Ratio



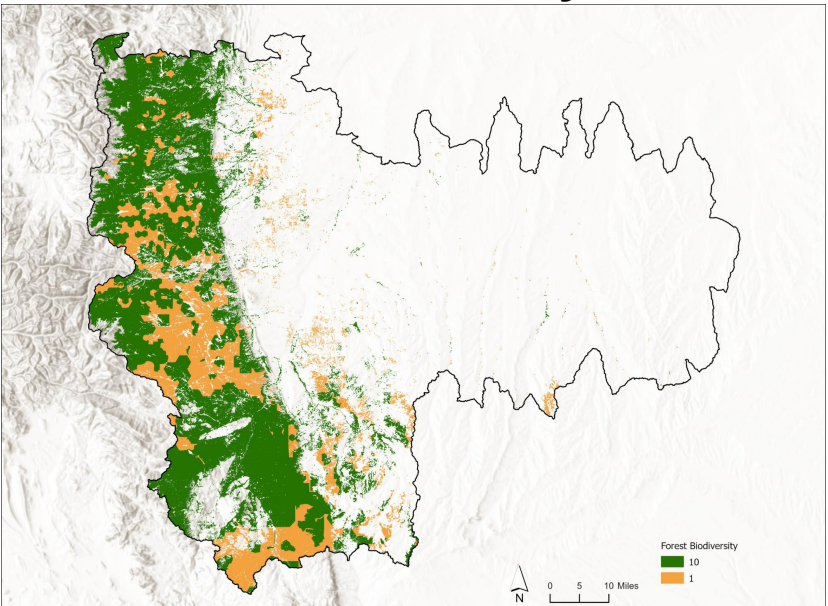
C: Edge Context



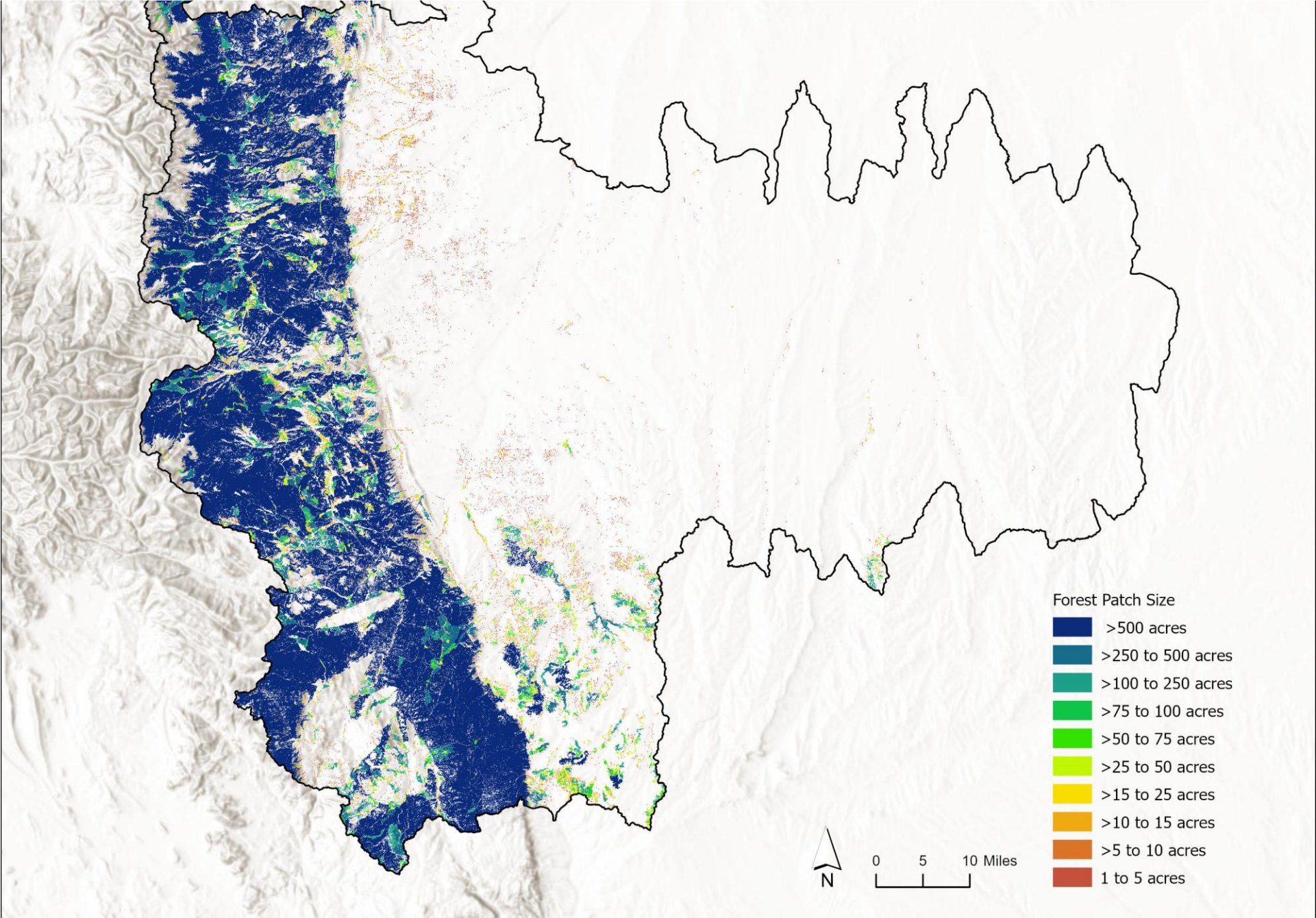
D: TNC Resilient Sites



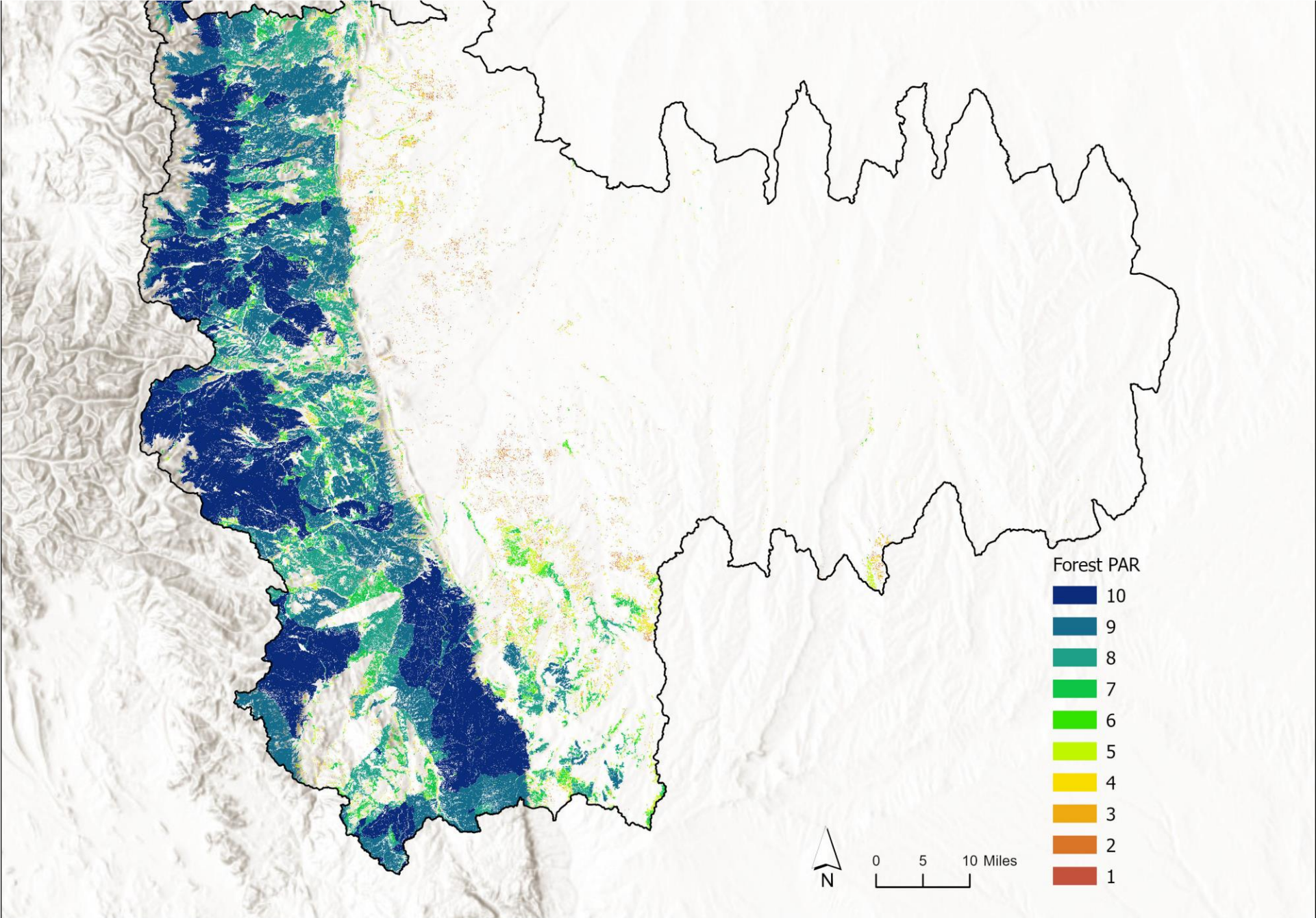
E: Biodiversity



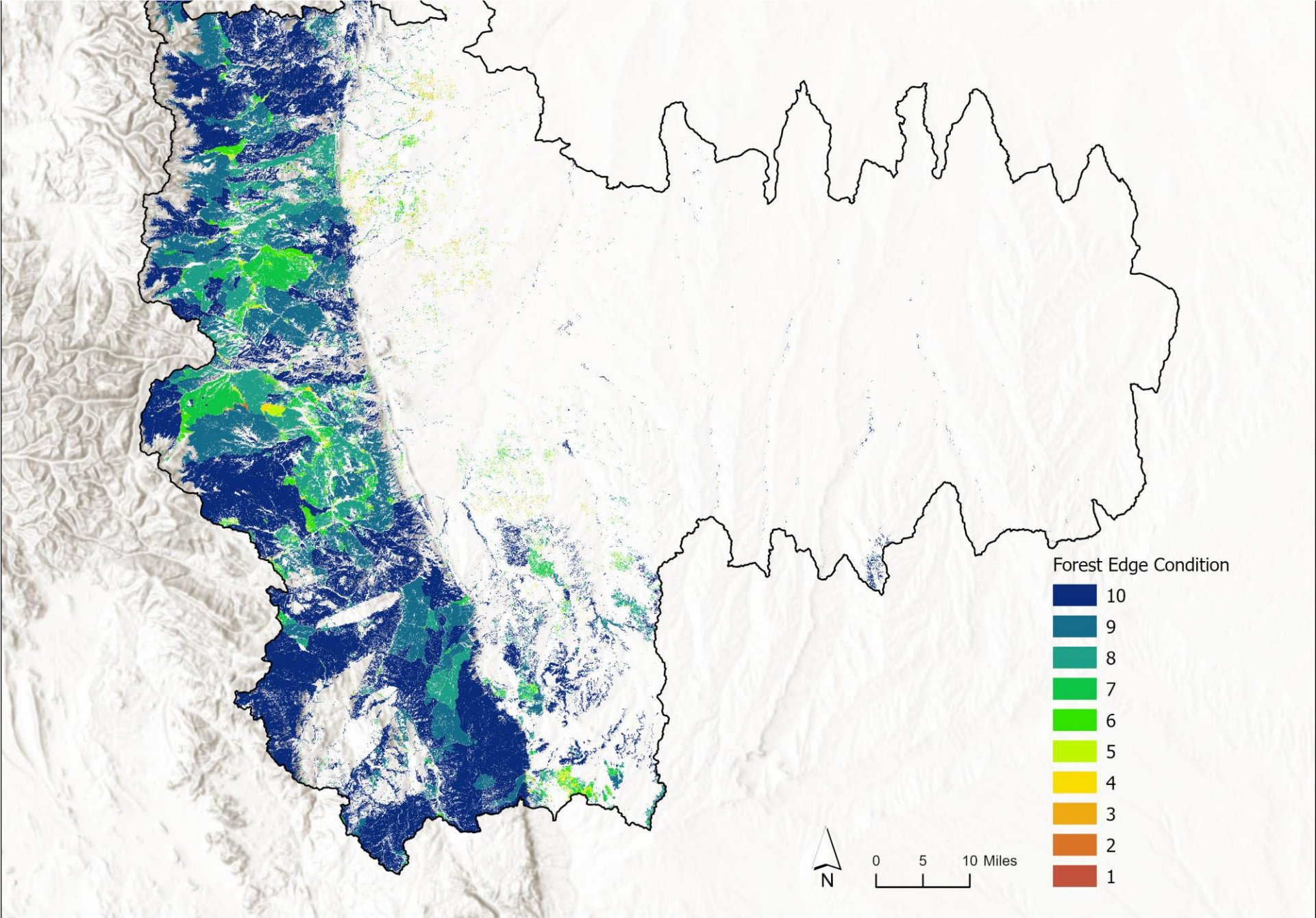
Forest Indicators: Patch Size



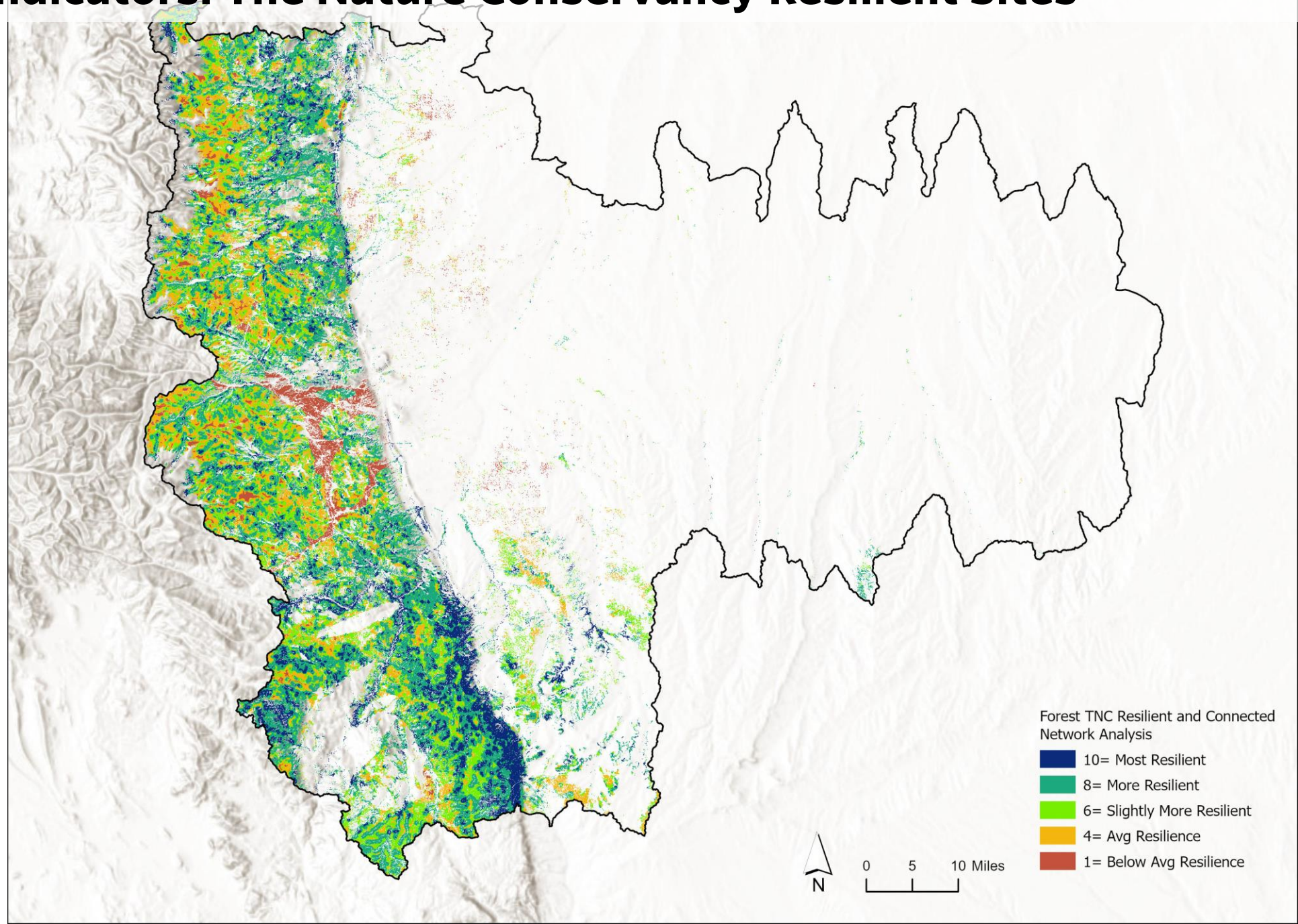
Forest Indicators: Perimeter Area Ratio



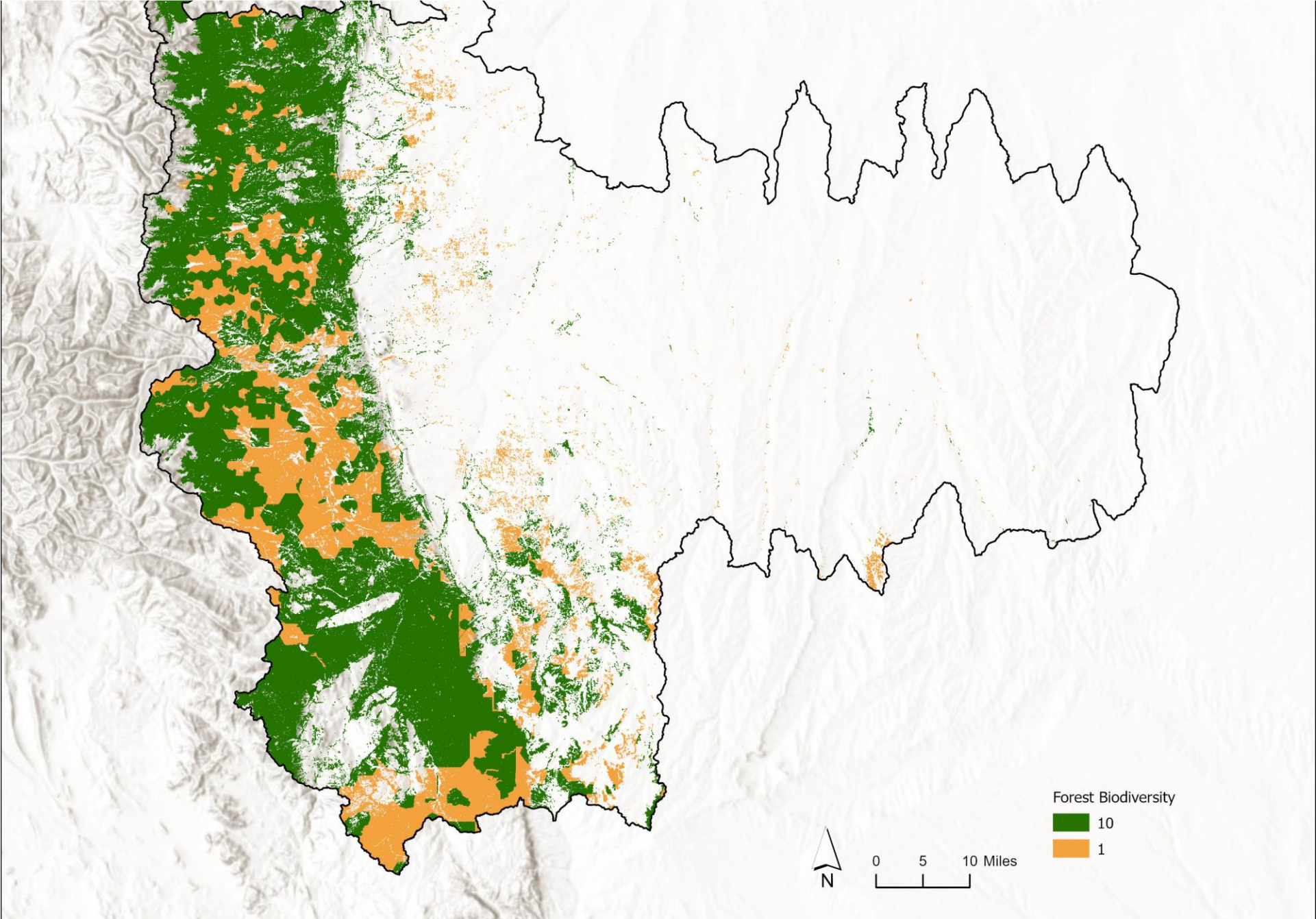
Forest Indicators: Edge Context



Forest Indicators: The Nature Conservancy Resilient Sites

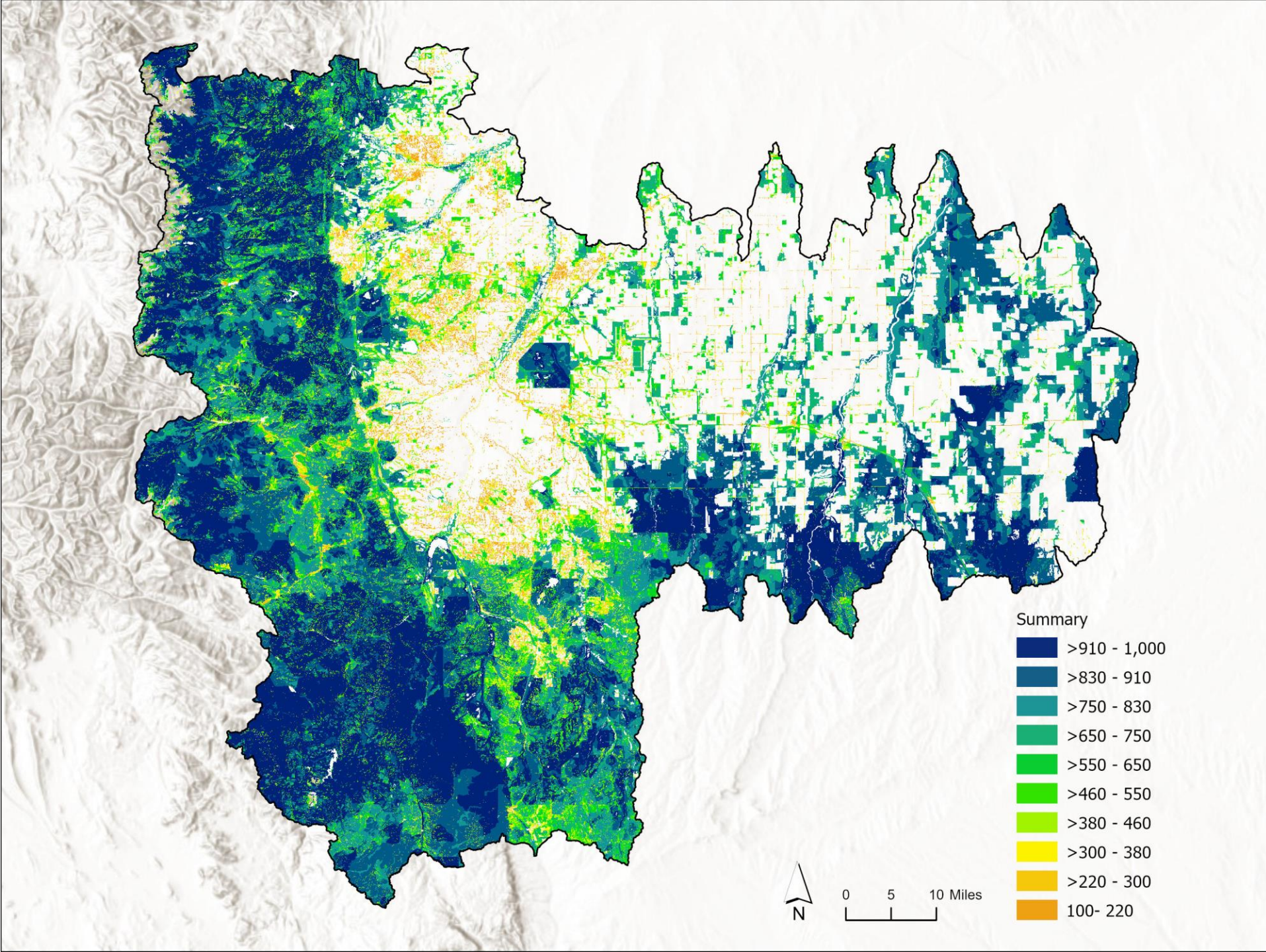


Forest Indicators: Biodiversity

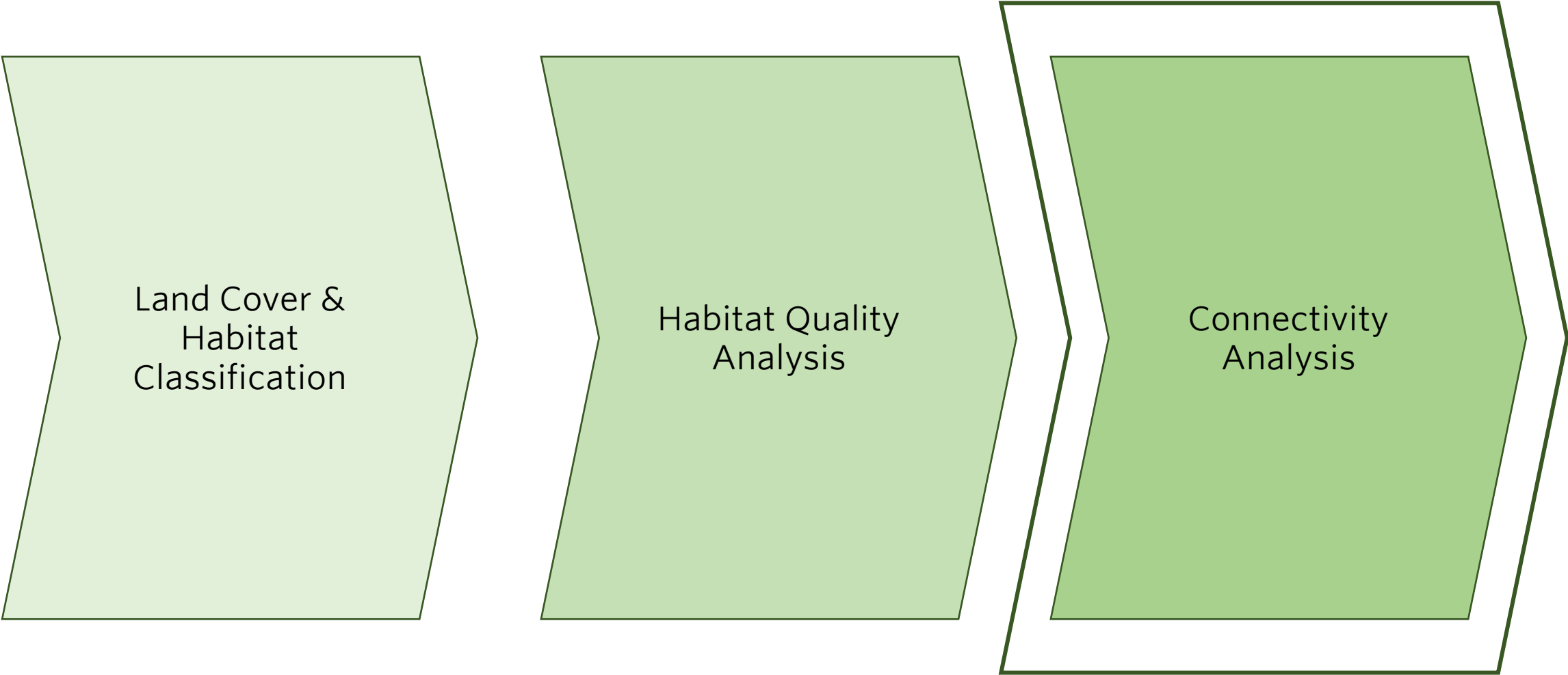


Forest, Grassland, Shrubland & Riparian/Wetland

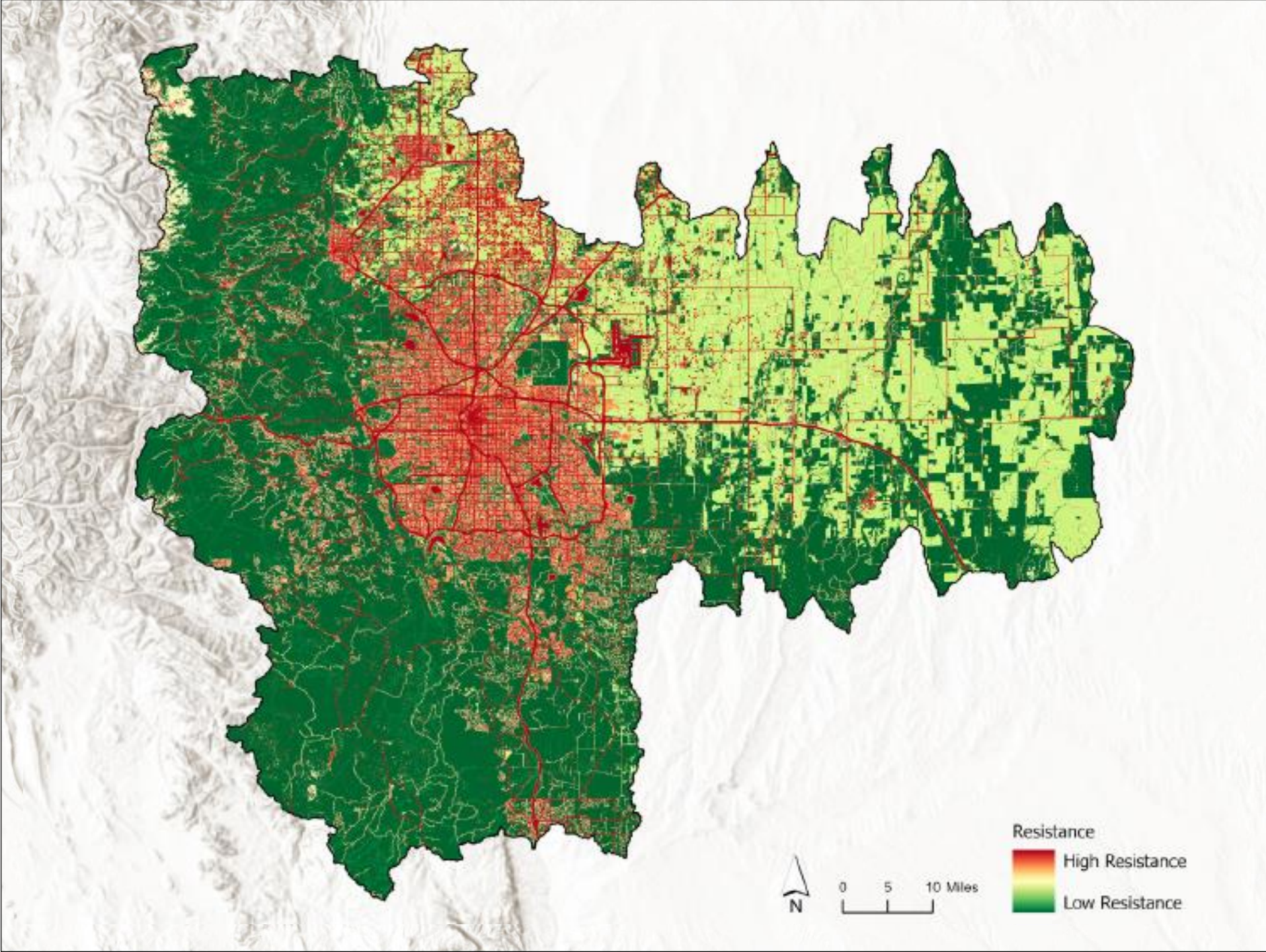
Combined
Summary



High-Level RCA Project Pathway



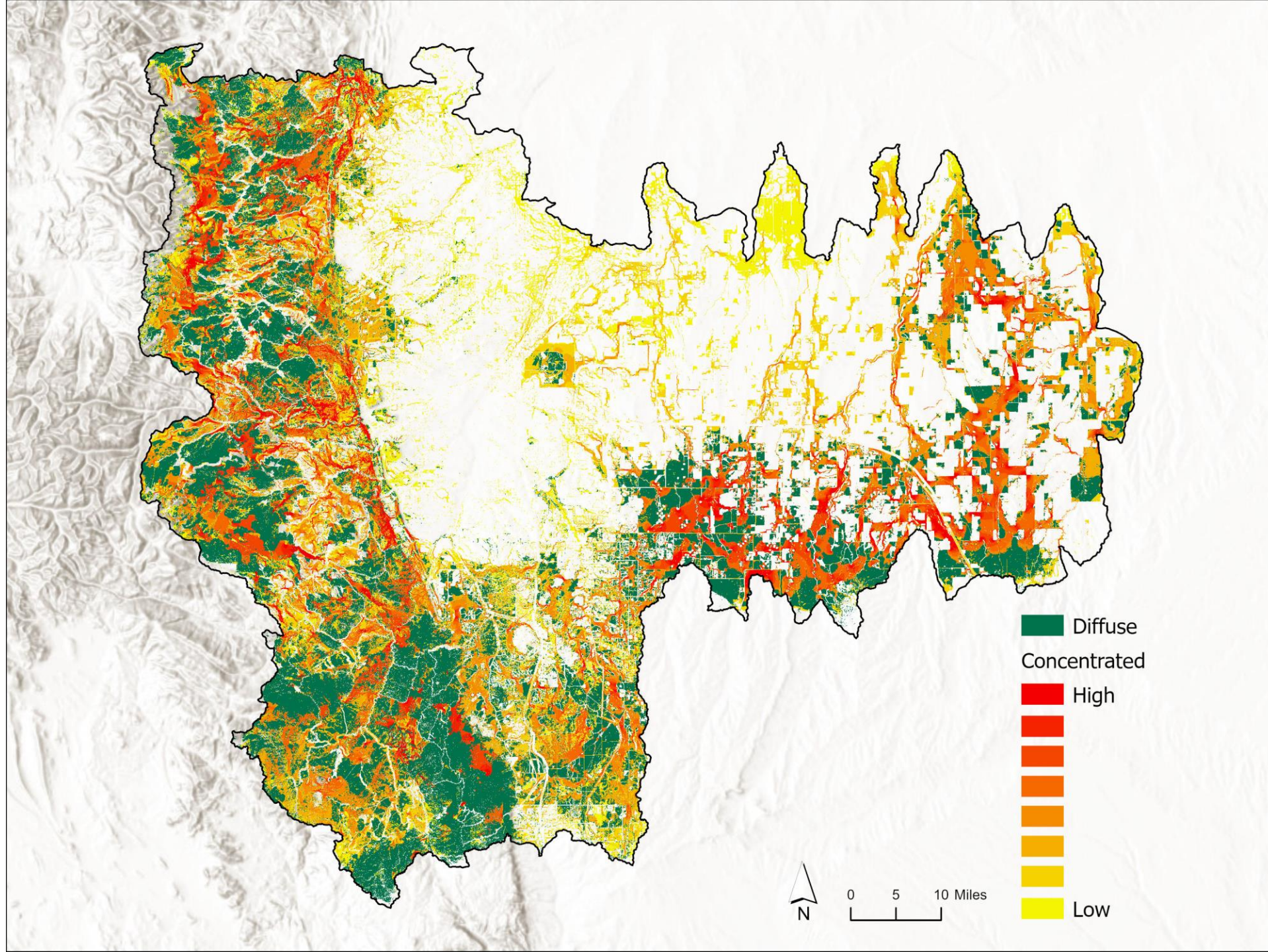
Landscape Resistance



Regional Habitat Connectivity Summary

Combination of all 3 habitat bins:

- Forest
- Grassland
- Shrubland



Define Area ▾

TRANSPARENCY  DOWNLOAD

GETTING
STARTED

HABITAT
CLASSES

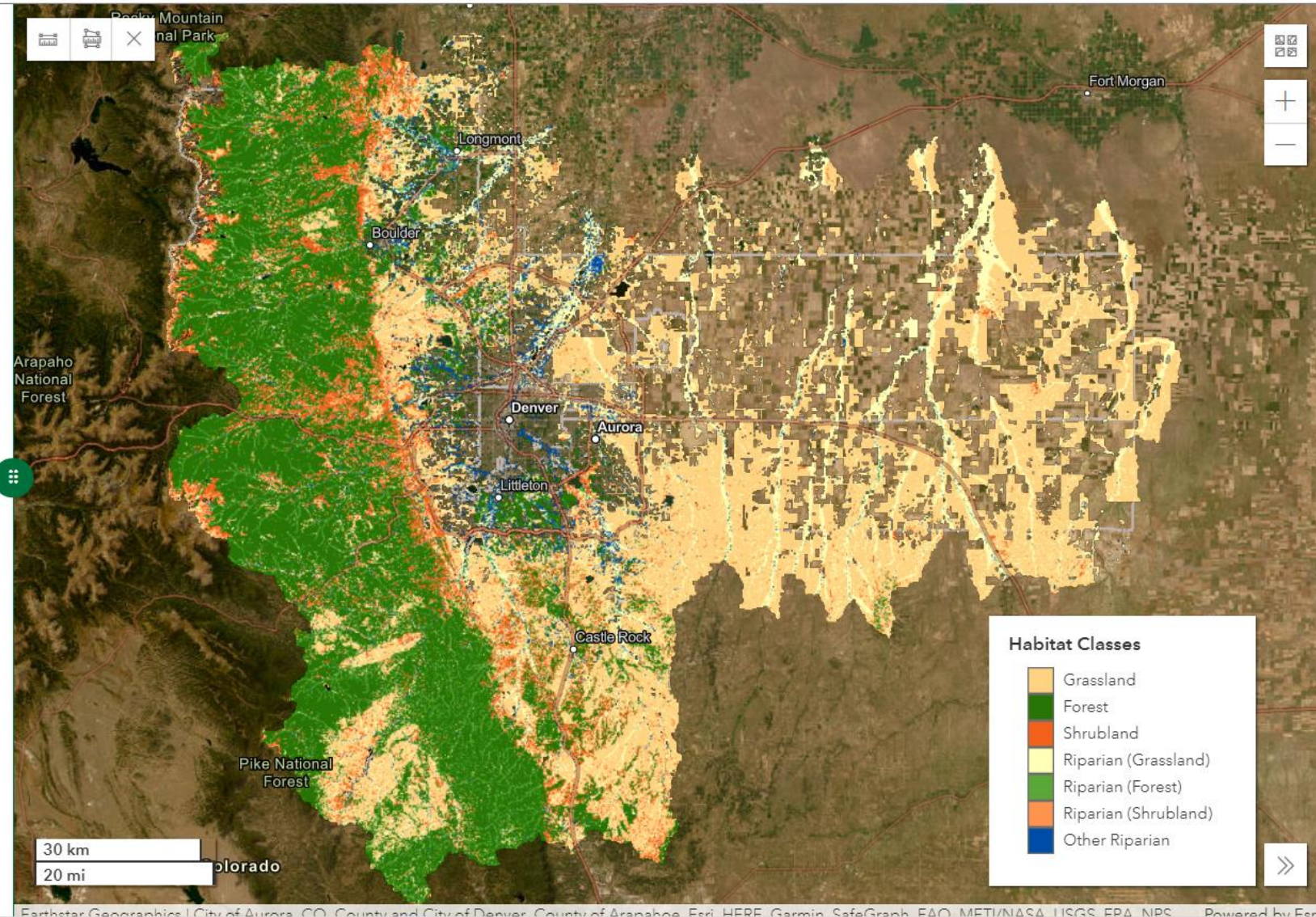
HABITAT
QUALITY

Habitat Classes

This map shows the three primary land habitat classes identified in the RCA; forest, grassland, and shrubland areas. As the RCA is a land-cover analysis, wetland and riparian areas functioning in one of the three land habitat classes are labeled as such (e.g., "Riparian (Forest)") or are otherwise are considered riparian, but not one of the three land habitat classes (e.g., "Other Riparian"). The table below provides a summary and breakdown of these habitat classes by area of the selection (acres and hectares) and as a percent of the selected area. [show less](#)

Define an area to generate statistics

To view statistics and details for the entire Metro Denver
Regional Area [download the report](#).



SUPPORTING A THRIVING REGION FOR PEOPLE AND NATURE

NATURAL HABITAT & CONNECTIVITY

Regional Conservation Assessment

- Science-Driven Assessment & Map of Priority Areas to Protect, Connect, Restore, and Enhance
- Close Coordination with Land Managers & Decision Makers

SOCIAL VULNERABILITY & ACCESS TO NATURE

Regional Equity Assessment

- Socioeconomic Status
- Household Composition & Disability
- Minority Stat. & Linguistic Isolation
- Housing & Transportation
- 10-Minute Walk to a Park

REGIONAL VISION FOR PEOPLE + NATURE

Create an equitable vision and diverse, committed coalition in support of a dynamic and applicable set of regional goals for nature, natural infrastructure, access, and land use for the Metro Denver region

Regional Outcomes

Improved Water & Air Quality

Species Preservation & Restoration

Equitable Access to Recreation & Nature

Stable / Decreased Greenhouse Gas Emissions

Decreased Mitigation & Restoration Costs

Shrinking Inequality Gap