



Westminster Station and Downtown

Staff Presentation by

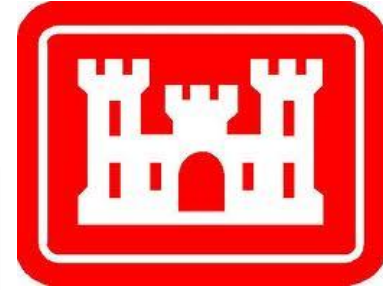
Mac Cummins

February 25, 2015

Eagle P3 Project

- 12 min. to Union Station
- 30-minute headways at peak hours
- Northwest Electrified Segment (NWE)





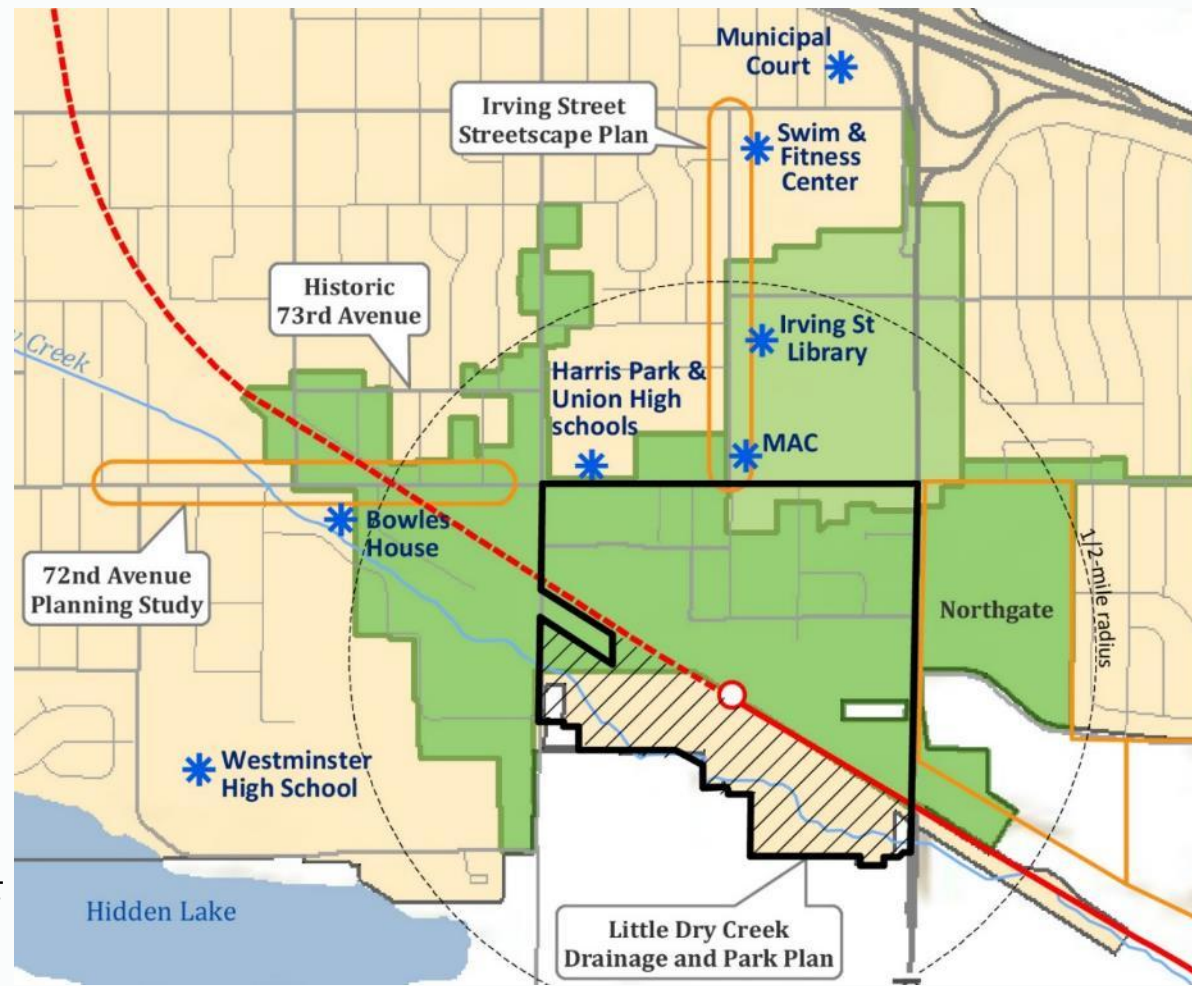
WESTMINSTER



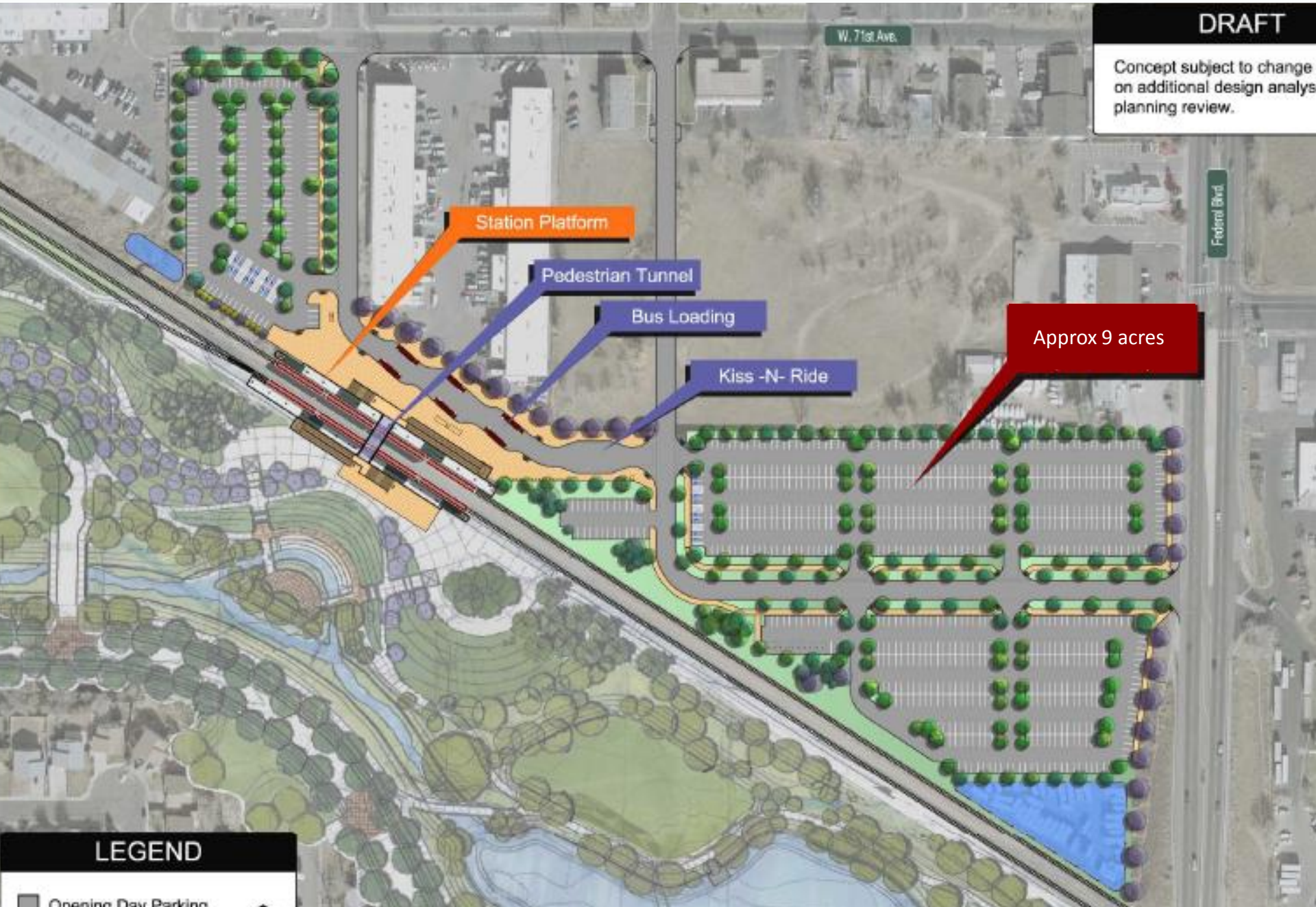
DENVER WATER

Westminster Station Planning

- Station planning initiated in 2002
- Planning for transit-oriented development began in 2004



RTD's Original Station Plan



DRAFT

Concept subject to change on additional design analysis planning review.

Station Platform

Pedestrian Tunnel

Bus Loading

Kiss -N- Ride

Approx 9 acres

LEGEND

Opening Day Parking

Station Core



Westminster Station



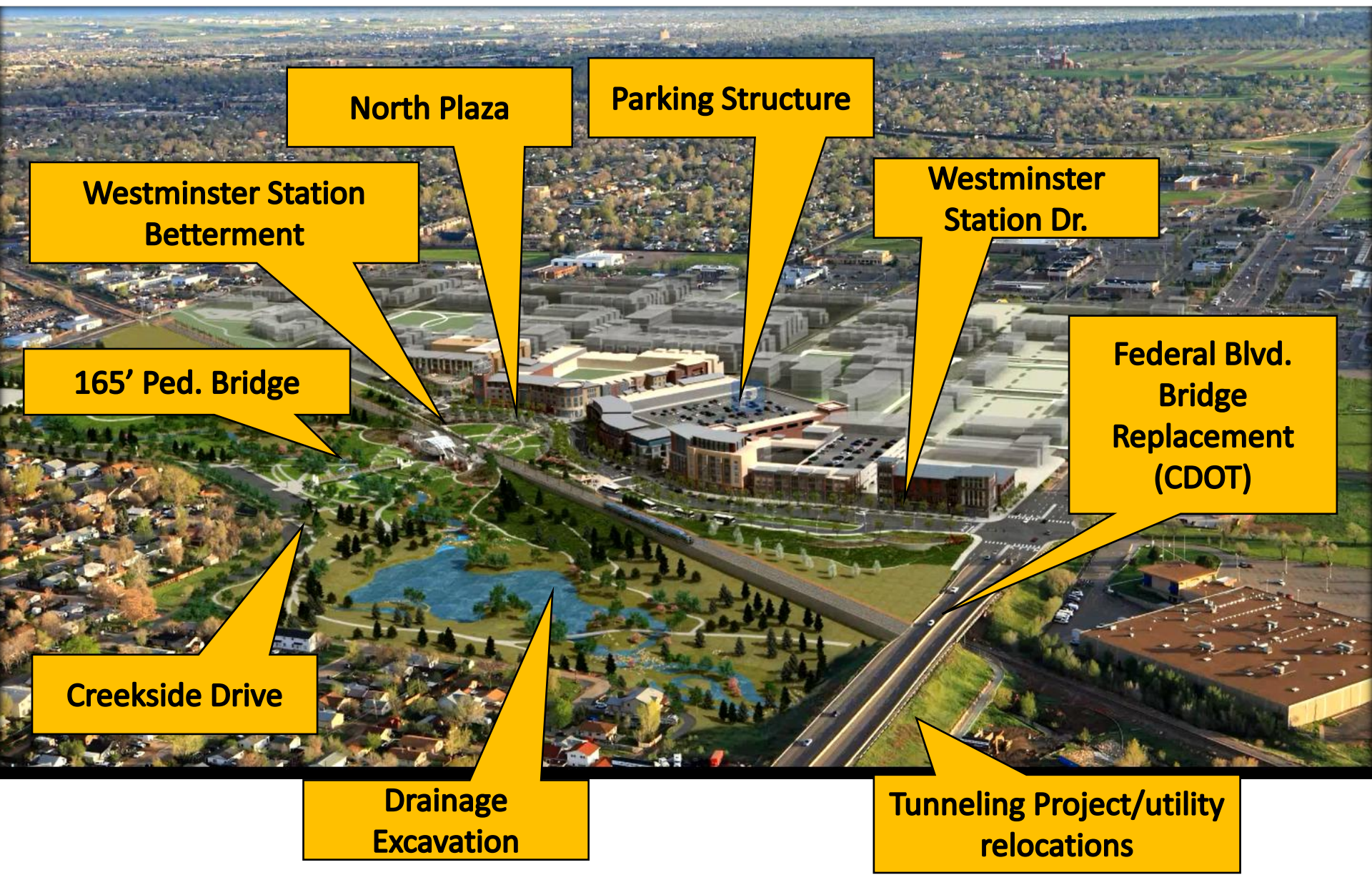




North Side Plaza View



CONSTRUCTION PROJECTS 2014-2016



North Plaza

Parking Structure

**Westminster Station
Betterment**

**Westminster
Station Dr.**

165' Ped. Bridge

**Federal Blvd.
Bridge
Replacement
(CDOT)**

Creekside Drive

**Drainage
Excavation**

**Tunneling Project/utility
relocations**

South Plaza & Little Dry Creek Park

- Floodplain issues with RTD plan
- Drainage/Park concept plan
- South Plaza design
- Phasing of improvements

Future Little Dry Creek Park Concept Plan



Xeriscape Garden

S. Plaza & Train Access

Westminster Station (Commuter Rail)

Environmental Education Pavilions

2-Acre Lake w/ fishing piers

Rock Wall/Play Equipment

Future Creekside Dr. and Parking area

Legend

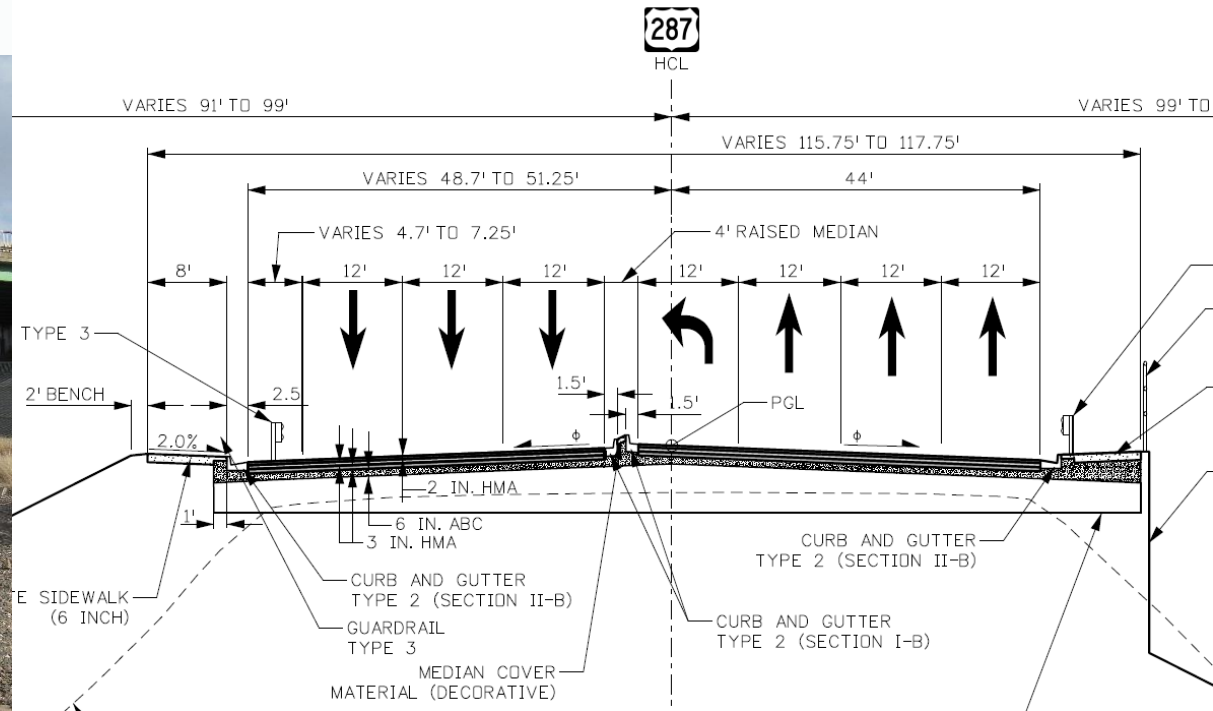
- Turfgrass
- Native Turf
- Riparian Plantings
- Shrub Beds
- Hardscape
- Creek / Pond / Water Feature

165' Pedestrian Bridge & Trail



Federal Blvd. Bridge Replacement

Westminster Station Area Transit Oriented Development



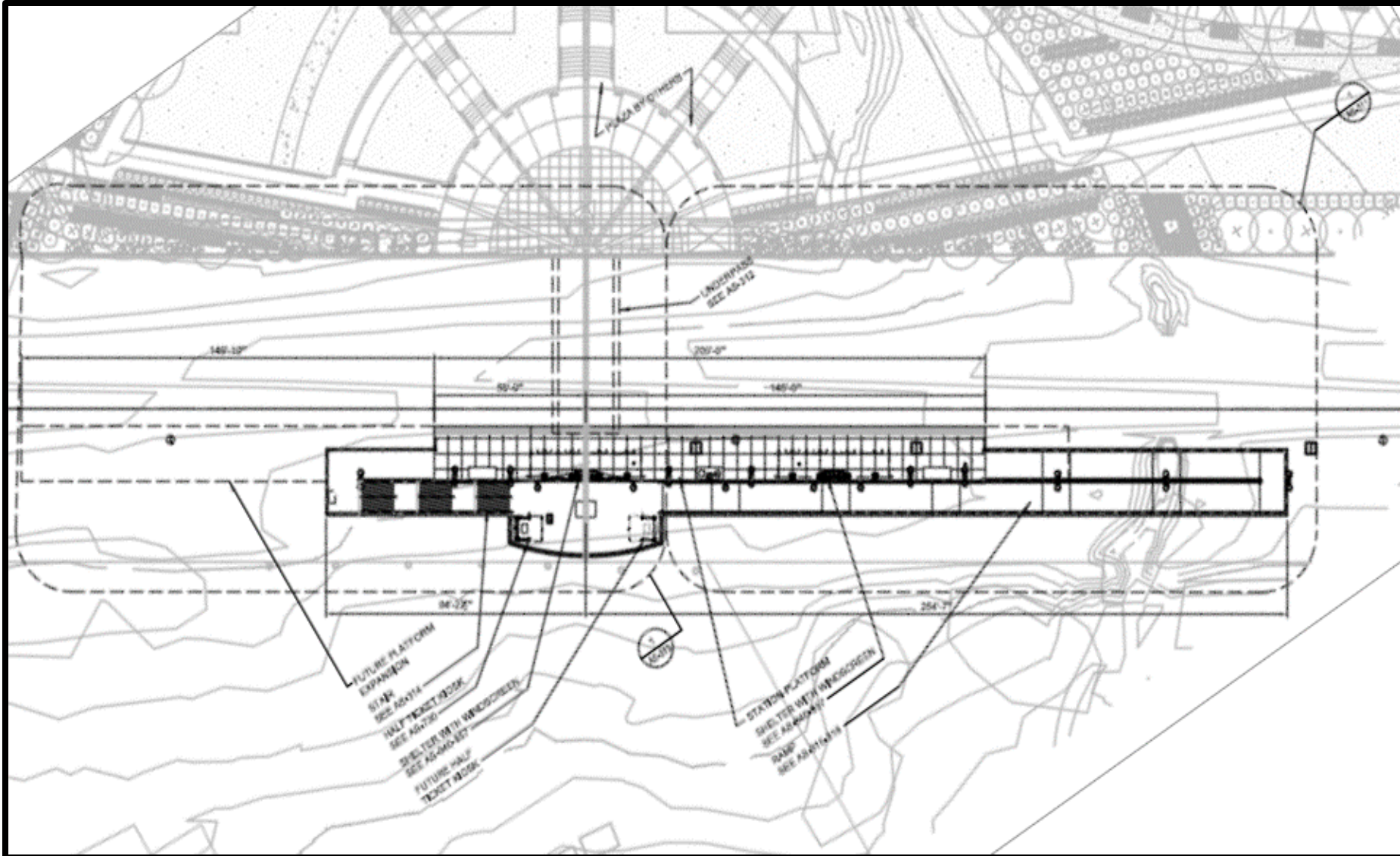


Westminster Station

PARKING GARAGE AND BUS FACILITY

Westminster Station Platform – RTD Base Plan

Westminster Station Area Transit Oriented Development



Westminster Station Platform



WESTMINSTER STATION AREA FUNDING PARTNERS

FUNDING SOURCE	AMOUNT
City of Westminster	\$ 34,059,496
Adams County	\$ 10,475,000
Regional Transportation District (RTD)	\$ 10,849,654
Urban Drainage and Flood Control District (UDFCD)	\$ 2,725,000
Denver Regional Council of Governments (DRCOG)	\$ 1,524,000
TOTAL CURRENTLY FUNDED	\$ 59,633,150

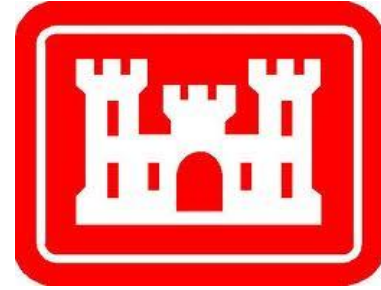
Westminster Station Area Transit Oriented Development

WESTMINSTER STATION CONSTRUCTION PROJECTS

ID	Task Mode	Task Name	Duration	Start	Finish	Half 2, 2014					Half 1, 2015					Half 2, 2015					Half 1, 2016					Half 2, 2016									
						J	J	A	S	O	N	D	J	F	M	A	M	J	J	A	S	O	N	D	J	F	M	A	M	J	J	A	S	O	
1	➤	DTP - ABRS relocation	220 days	Mon 8/12/13	Fri 6/13/14	[Yellow bar]																													
2	➤	DTP - Pedestrian Arch Tunnel	65 days	Mon 6/2/14	Fri 8/29/14	[Yellow bar]																													
3	➤	CoW - N. Retaining Wall	45 days	Tue 6/24/14	Mon 8/25/14	[Cyan bar]																													
4	➤	DTP - N. half of culverts under tracks	60 days	Mon 8/11/14	Fri 10/31/14	[Yellow bar]																													
5	➤	LDC - East of Federal	110 days	Mon 6/23/14	Fri 11/21/14	[Yellow bar]																													
6	➤	BNSF - Install new tracks	14 days	Wed 10/15/14	Mon 11/3/14	[Yellow bar]																													
7	➤	DTP - New Commuter rail tracks	90 days	Mon 2/2/15	Fri 6/5/15	[Yellow bar]																													
8	➤	DTP - S. Platform Betterment	231 days	Mon 3/2/15	Mon 1/18/16	[Yellow bar]																													
9	➤	CoW - S. Betterment Enhancements (benches etc.)	60 days	Mon 1/4/16	Fri 3/25/16	[Cyan bar]																													
10	➤	CoW - Nolans Bldg. Demolition	60 days	Fri 11/21/14	Thu 2/12/15	[Cyan bar]																													
11	➤	CoW - Parking Structure	191 days	Mon 1/5/15	Mon 9/28/15	[Dark Blue bar]																													
12	➤	DTP/RTD - Operations for Parking Structure	60 days	Fri 10/2/15	Thu 12/24/15	[Yellow bar]																													
13	➤	CoW - N. Side Infrastructure & Plaza	255 days	Mon 4/6/15	Fri 3/25/16	[Cyan bar]																													
14	➤	IGA - Revenue date	1 day	Thu 3/31/16	Thu 3/31/16	[Red star]																													
15	➤	CDOT - Federal Bridge Replacement	340 days	Mon 11/10/14	Fri 2/26/16	[Cyan bar]																													
16	➤	CoW - Federal Bridge Enhancements (entry sign etc.)	75 days	Mon 1/11/16	Fri 4/22/16	[Cyan bar]																													
17	➤	LDC - Phase I drainage	365 days	Mon 11/3/14	Fri 3/25/16	[Yellow bar]																													
18	➤	LDC - Creekside Dr.	100 days	Mon 3/7/16	Fri 7/22/16	[Yellow bar]																													
19	➤	LDC - Pedestrian Bridge/Trail (DRCOG TIP)	60 days	Fri 4/15/16	Thu 7/7/16	[Yellow bar]																													
20	➤	LDC - Transit Area	90 days	Mon 5/9/16	Fri 9/9/16	[Yellow bar]																													
21	➤	LDC - Environmental Area	65 days	Mon 5/30/16	Fri 8/26/16	[Yellow bar]																													
22	➤	*WESTMINSTER STATION GRAND OPENING* (best guess per John B.)	7 days	Mon 10/3/16	Tue 10/11/16	[Yellow bar]																													

Project: ProjectConstructionSch

Task	Project Summary		Manual Task	[Cyan bar]	Start-only	[Cyan bar]	Deadline	↓
Split	Inactive Task	Duration-only	[Cyan bar]	Finish-only	[Cyan bar]	Progress	[Cyan bar]
Milestone	Inactive Milestone	◆	Manual Summary Rollup	[Cyan bar]	External Tasks	[Cyan bar]	Manual Progress	[Cyan bar]
Summary	Inactive Summary	—	Manual Summary	[Cyan bar]	External Milestone	◆		



WESTMINSTER



DENVER WATER