

FEDERAL BOULEVARD  
FRAMEWORK PLAN  
HEALTH IMPACT ASSESSMENT

---

**HIA & the Planning Process**

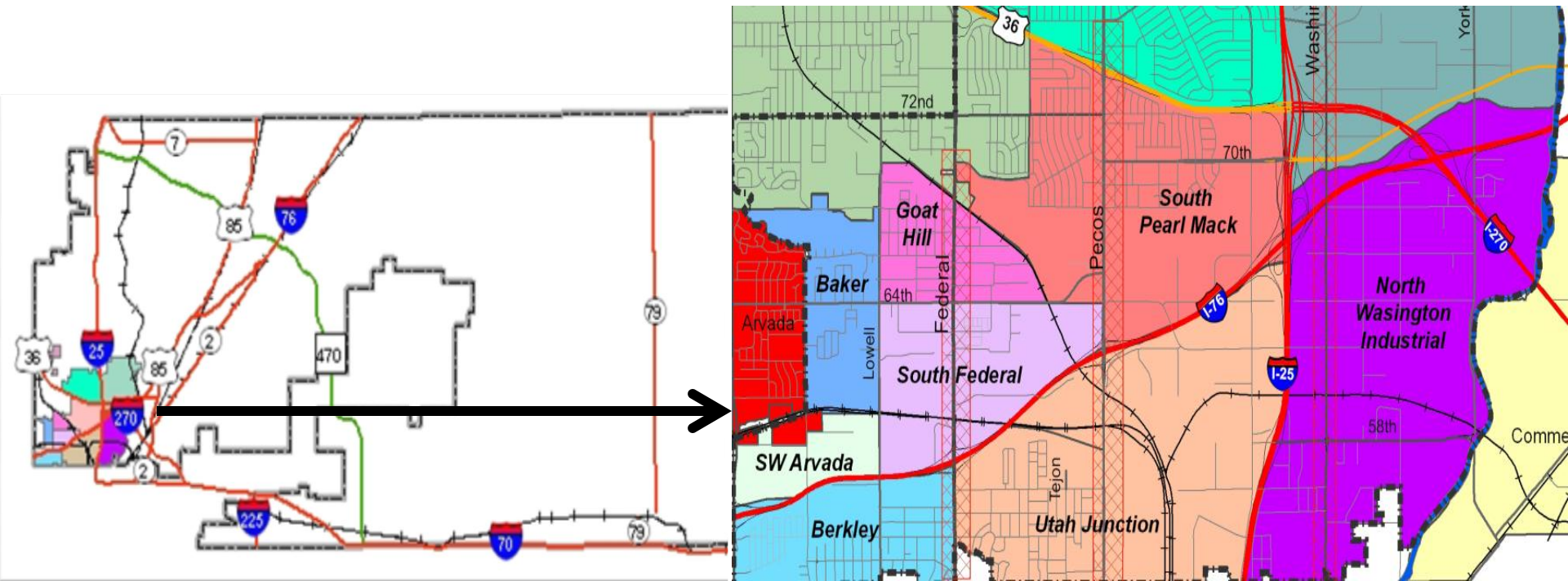
Tri-County Health Department & Adams County

# Presentation Objectives

- The Federal Blvd Framework Plan Overview
- The Role of HIA in a Corridor Plan
- Understanding of the HIA Process
- Integrating HIA: Process, Findings and Recommendations
- Lessons Learned

# Context for the plan

- *Southwest Adams County Framework For Future Planning (2005)*
  - *Provides foundation for future planning & development*
  - *Federal Boulevard corridor identified for future planning efforts*



# Context for the Plan

- *Imagine Adams County* (2012)
  - Federal Boulevard – identified as a major commercial corridor
  - Policies and strategies for revitalizing and expanding role as County gateway

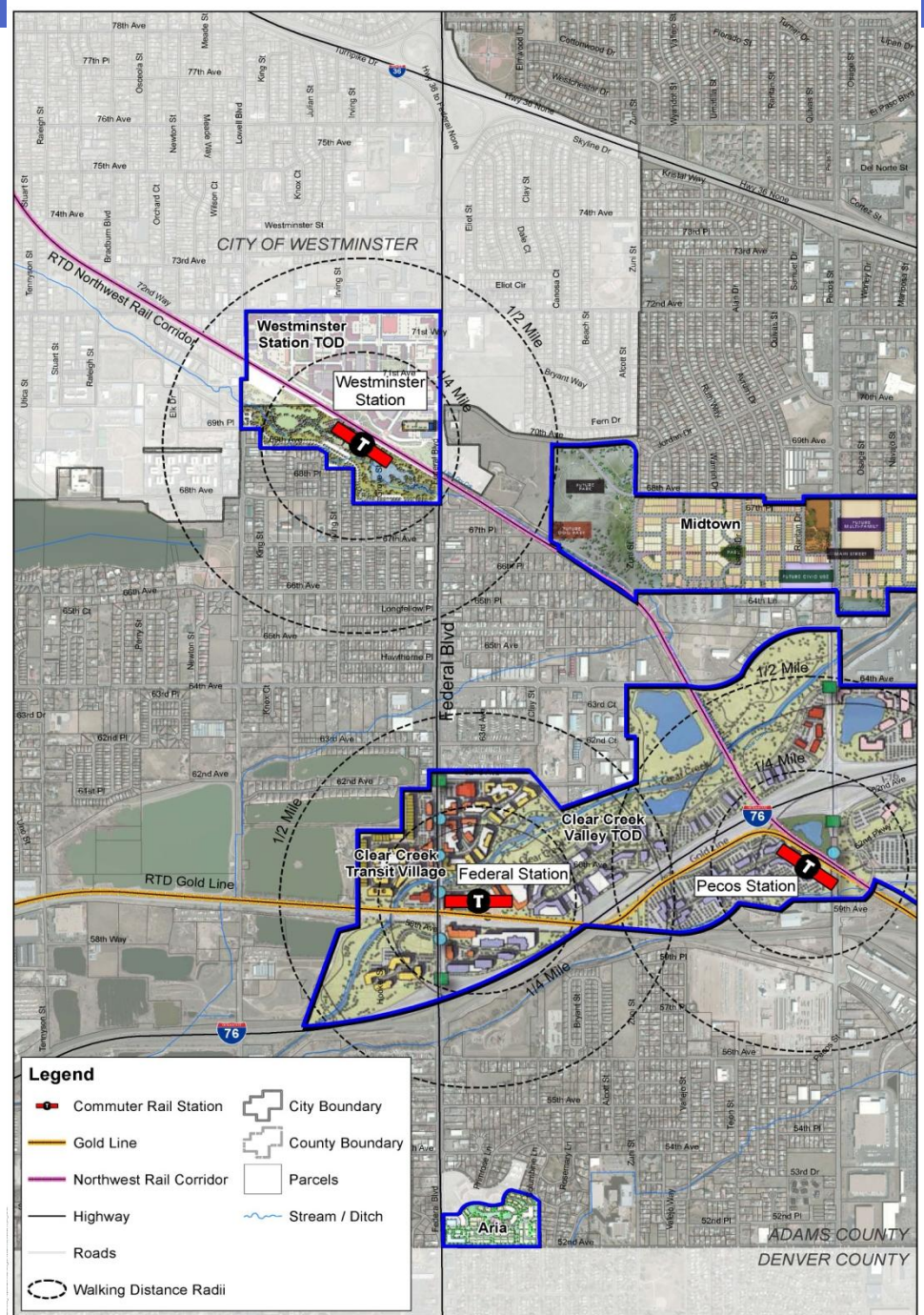


# Context for the Plan

- Other Planning Efforts & Projects
  - Berkeley Neighborhood Plan
  - Clear Creek Valley TOD Plan
  - Lighting/Median Project
  - Intersection Improvements (68<sup>th</sup> and 60<sup>th</sup>)
  - Bridge Widening Over Little Dry Creek
  - Brownfields Area-Wide Planning Grant
  - Midtown (67<sup>th</sup> & Pecos) & ARIA (52<sup>nd</sup> & Federal)
  - Clear Creek Valley Park (Lowell Blvd.)
  - Future Area Wide Plan (2014-2015)

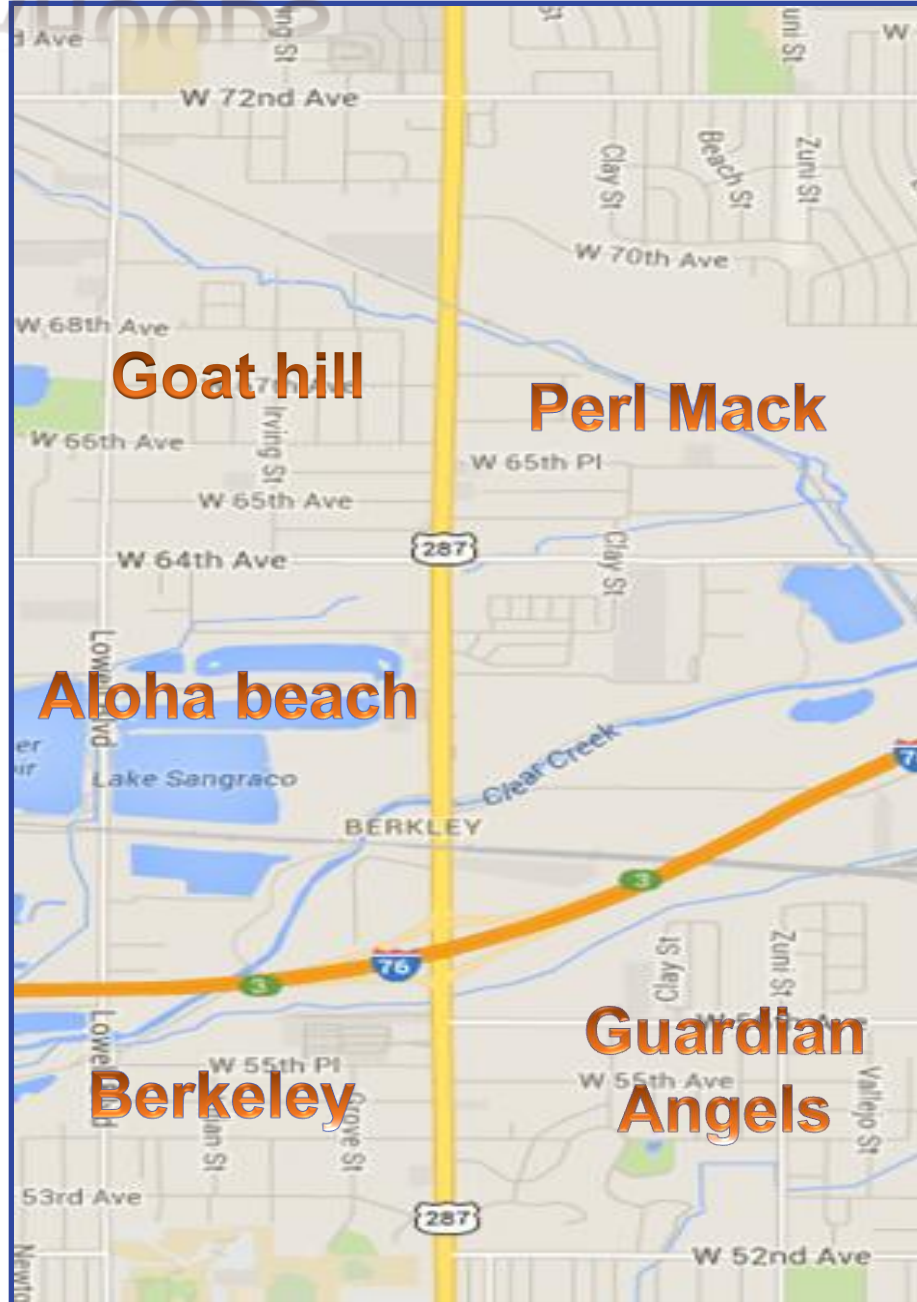
# Goals

- 1) “Stepping Stone” to **Area-Wide Plan**;
- 2) Begin to understand the complexity and diversity of **needs**;
- 3) Preserve and enhance **visual quality** of the corridor to create an inviting passage
- 4) Create **safe pedestrian and bike route passages** and connections
- 5) Facilitate **vehicular transportation** including well-designed and functional connections to stations
- 6) Provide guidance & recommendations on future **economic investments**
- 7) Encourage **compatible development**



# Boundaries

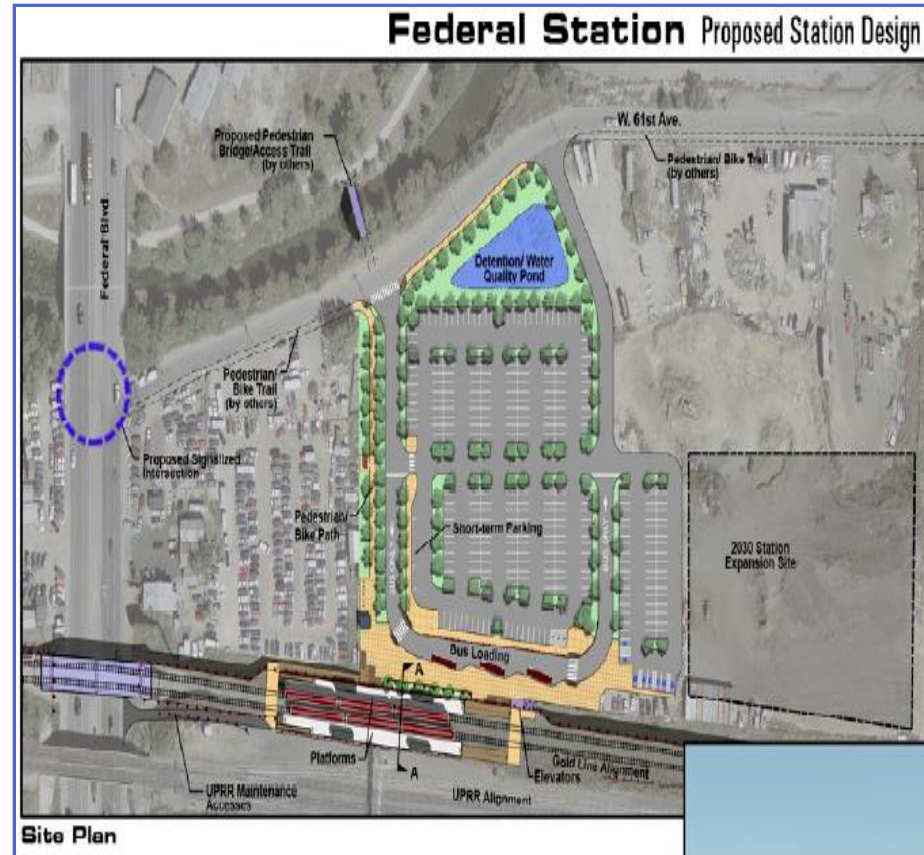
# NEIGHBORHOODS





# Federal Station

- Gold Line Corridor
- 60<sup>th</sup> Ave. access.
- North of BNSF tracks
- Parking/bus drop-off
- Proposed Clear Creek Transit Village to the west across Federal



# Westminster Station

- Northwest Corridor
- 71<sup>st</sup> & Lowell
- Terminus till future funding
- Open space area to the south



# Five-Step Process

**1. Project Startup & Approach**  
**(January 2014)**



**2. Inventory & Analysis**  
**(February – March 2014)**



**3. Stakeholder & Community Engagement**  
**(March - May 2014)**



**4. Plan Development and Recommendations**  
**(May – July 2014)**



**5. Adoption**  
**(August – September 2014)**

# INTEGRATING THE HIA INTO THE PROCESS

---

# Tri-County Health Department (TCHD)

- Largest local health department in Colorado
- Three counties in Metropolitan Denver Region
- Serve 1.3 million people
- Urban, suburban, rural



# TCHD Land Use Program

## Public Health Objectives

- Promote healthy behaviors
- Prevent illness and injury
- Protect against environmental hazards



## Expanded Program Focus

- Healthy Community Design
- Healthy Eating Active Living (HEAL)
- Transportation Planning
- Brownfields
- **Health Impact Assessment**

**Partner/Resource**

# Leading Causes of Death – Adams Co



## Heart Disease

Some Preventable / Controllable Risk Factors

- **Physical inactivity**
- Poor nutrition
- **Obesity**
- Tobacco
- Diabetes
- High blood pressure
- High cholesterol



## Cancer

Some Preventable / Controllable Risk Factors

- Tobacco
- **Obesity**
- **Physical inactivity**
- Poor nutrition
- Environmental toxins
- Cancer-causing viruses (HPV\*, Hep C)
- Sun/UV ray exposure



## Stroke

Some Preventable / Controllable Risk Factors

- **Physical inactivity**
- Poor nutrition
- **Obesity**
- Tobacco
- Diabetes
- High blood pressure
- High cholesterol



## Chronic Lower Respiratory Disease

Some Preventable / Controllable Risk Factors

- Tobacco
- **Air pollutants and environmental toxins**



## Unintentional Injury

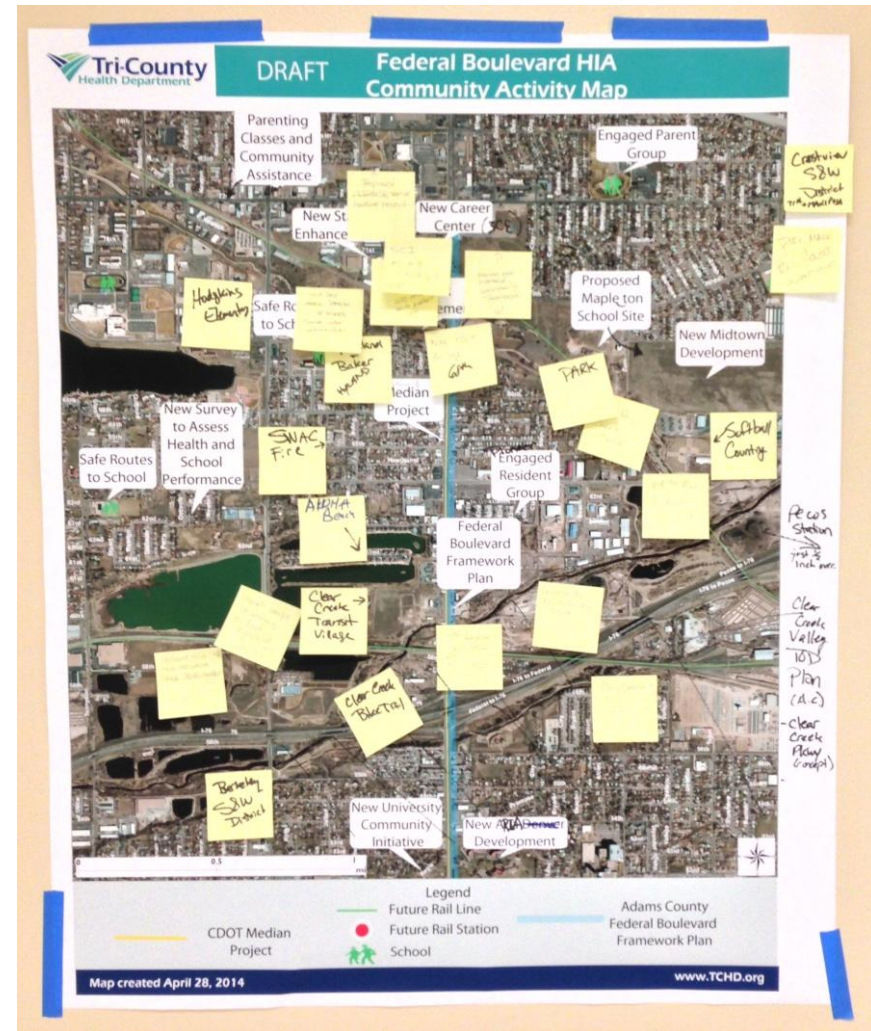
Some Preventable / Controllable Risk Factors

- Alcohol, Drugs
- Impaired/ Distracted driving
- Poor safety awareness
- Risky behaviors
- **Environmenta l hazards**
- Physical inactivity (fall risk in elderly)

**Potentially addressed through planning process**

# What We Did

- Community Engagement
  - Stakeholder interviews
  - Business Inventory
  - Ped and Bike Inventory
  - Walking Audits
  - Community survey
  - Community meetings
- Existing and Community Data
- Literature Review



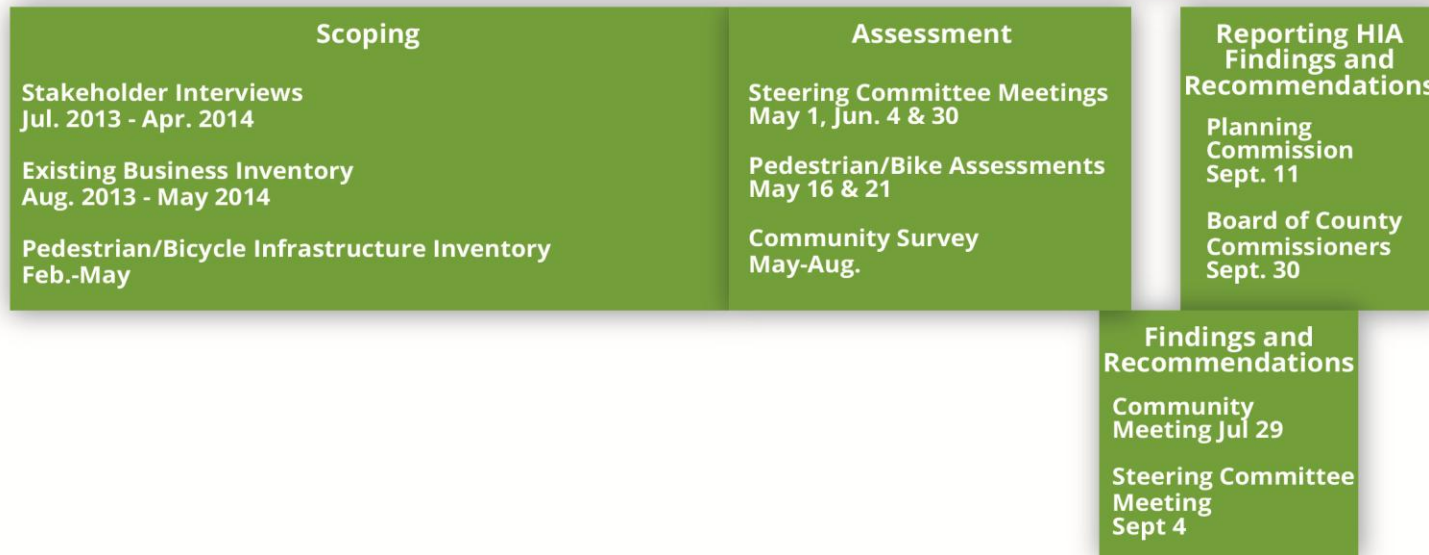


# Planning and HIA Timeline

## Federal Blvd. Plan Activities

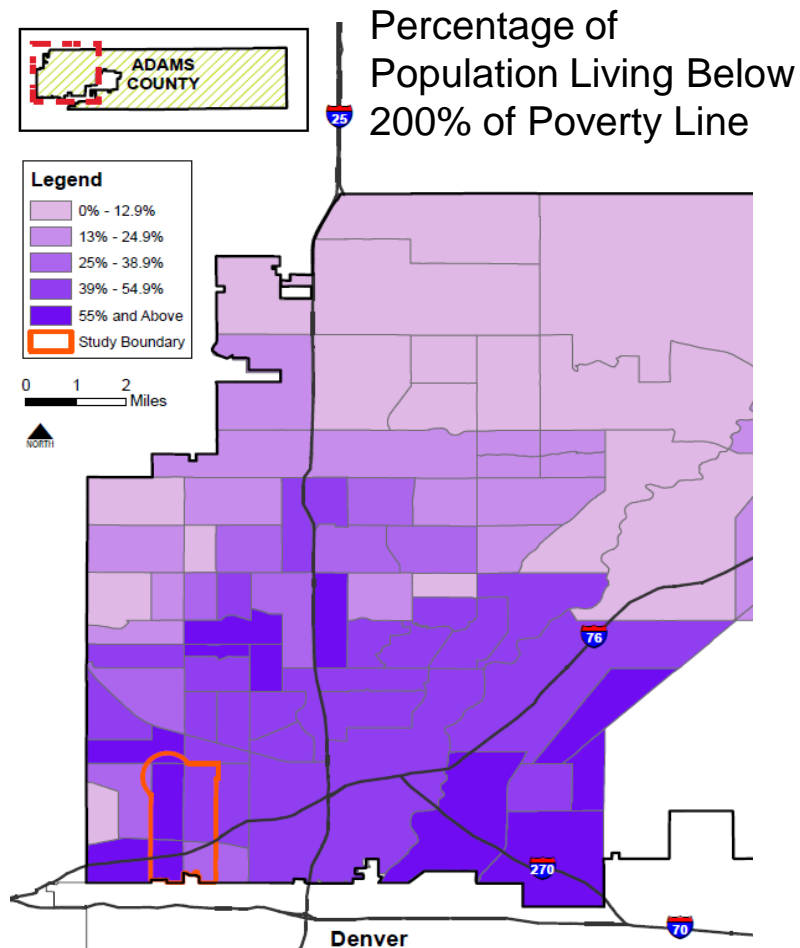


## HIA Activities



# What We Learned

- Existing conditions



American Community Survey, 2008-2012



# What We Learned

- What the community told us
  - Incomplete and inadequate sidewalks
  - Limited safe pedestrian crossings
  - People do not feel safe in the community
  - People would like to walk more, some do walk, but not enough
  - Concern about housing cost increases and former landfills/brownfields



# What Does This Mean for Health?

- Disparities in the Community
  - Income, Race and Ethnicity, Language, Age

	Study Area	Adams County	State of Colorado
% Living Below 200% of Poverty Level	32.5% - 71.9%	34.3%	29.6%
% Hispanic or Latino (any race)	57.1% - 67.1%	37.8%	20.6%
% Speak English Less Than “Very Well”	16.5% - 31.9%	13.5%	6.7%
% 65 years of age or older	9.0% - 19.1%	8.5%	11.1%

Source: American Community Survey 2008-2012

# Health Connections in the Plan

- Traffic Safety
- Pedestrian Safety
- Community Safety
- Physical Activity
- Housing Affordability



# HIA Recommendations

## Planning Process

- **Enhance community engagement**
- **Collaboration across jurisdictions**
  - Address transportation issues
  - Address safety issues



# HIA Recommendations

## Traffic Safety and Physical Activity

- **Prioritize safe pedestrian and bicycle connections**
  - Develop a plan for pedestrian connections
- **Improve infrastructure**
  - Safe crossings and sidewalks
- **Prioritize neighborhood-serving retail, including healthy food retail in land use plans**



# HIA Recommendations

## Community Safety

- **Programs to clean up properties**
- **Prioritize neighborhood-serving retail over sexually-oriented businesses and liquor establishments**



# HIA Recommendations

## Housing Affordability

- **Develop a more actionable recommendation for affordable housing**
  - Preserve existing and prioritize affordability in new development



# TCHD's HIA Program Components



<http://oscarmacias.myefolio.com/commassess>

- Local government capacity
- Resource development
- Regional policy development

# HIA Resources

- On line Training:

<http://advance.captus.com/Planning/hia2/home.aspx>

- HIAs in the US:

<http://www.healthimpactproject.org/hia/us>

- HIA Resources (CDC):

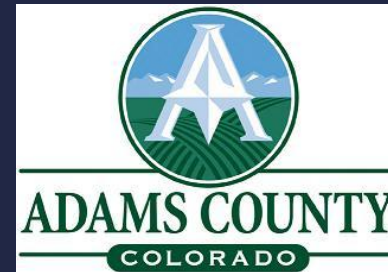
<http://www.cdc.gov/healthyplaces/hiaresources.htm#education>

# Lesson Learned

- Establish expectations
- More communication
- Education and training



# Thank you!



---

Sheila Lynch, AICP  
Tri-County Health Department  
[slynch@tchd.org](mailto:slynch@tchd.org)  
(720) 200-1571

---

Joelle Greenland, AICP  
Adams County  
[JGreenland@adcogov.org](mailto:JGreenland@adcogov.org)  
(720) 523-6851