



Innovative Mobility on Demand (MoD) and Microtransit

Accountability Committee

March, 2021

Jeff Becker, Service Development



Rationale to Use MoD & Microtransit

Provide cost-effective services throughout the District, but one size does not fit all.

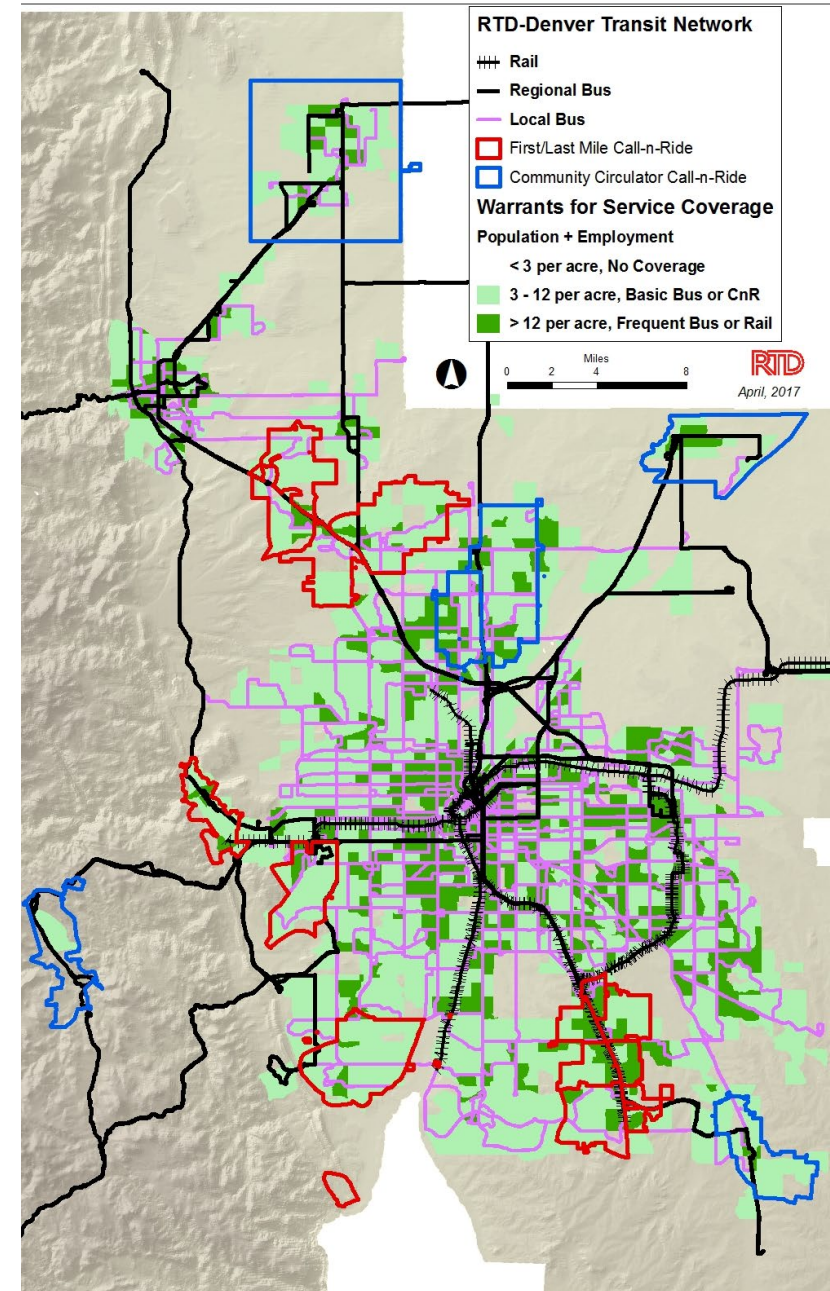
- More cost-effective than bus in low density areas
- Jurisdictional equity
- Transit network integration

RTD FlexRide started 2000 -

- Customized service within each community from on-demand to flex-routes; bus fare
- Automated booking and scheduling
- 23 service zones, 43 vehicles, ~2,000 ride/day

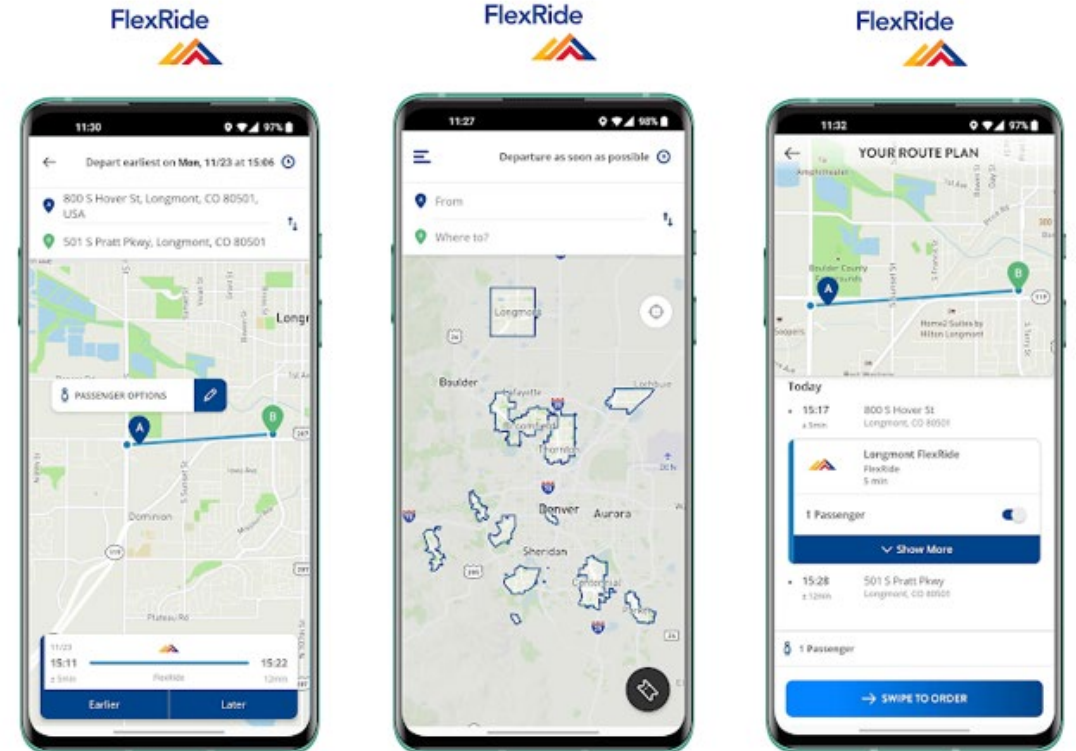
Principle Markets:

- **First/Last Mile – regular, reverse commute**
- **Community Circulation – residential, mixed-use**



RTD Partnership with Kyyti Group App

- Fully integrated trip planner for *intermodal* itineraries among bus, rail and FlexRide
- Book FlexRide trips directly from the app in real time, reservation, subscription
- Facilitates first- and last-mile connections
- Now in use



RTD Partnership with Metro Taxi Pilot

Intelligently integrate taxis with fleet vehicles to improve cost-effectiveness and increase ridership

- Off-peak 10:00AM - 2:00PM in DTC
- Provide trips anywhere within all 7 zones in the DTC
- Integrated service delivery using FlexRide platform offers seamless approach to the customer
- Metro Taxi accepts all RTD fares and wheelchair users assigned to RTD's fleet
- Begins March 8th
- Future peak-period supplement



RTD provides access to rail stations & bus stops and promotions

City of Centennial-Lyft Pilot August 2016 – February 2017

- Same service as Dry Creek FlexRide, free
- Lyft had 10 rides/day
- FlexRide had 53/day, 5 less than year before
- Grant funded

University of Denver Chariot June 2018-

- First/last mile to station & circulator on campus; free
- 88 rides/day
- Chariot discontinued; replaced with local contractor, no app

Link Shuttle September 2015-2018

- Shuttle from Lincoln station to large employers
- 320 rides/day; about 2% of employees
- Lone Tree FlexRide went from 68 to 40/day
- City funded

Link On-Demand – Uber/Via August 2017-

- Same service as Lone Tree FlexRide; free
- 1 veh – 45 rides/day; 2 veh - 73/day
- FlexRide declined to 37/day

Denver CityShuttle – Chariot October 18, 2018 – January 20, 2019

- Urban area with good transit service
- 27 boardings/day
- Chariot shut down in January

Some Other Activities

- Focus Points in Globeville-Elyria-Swansea – RTD provides a van and annual maintenance and operations stipend – 2001 -
- Autonomous Vehicle Shuttle Pilot with Panasonic at 61st & Pena Station - 2018
- Payment and ticket integration with Uber, Lyft and Transit apps – 2019-21
- Boulder County started a service with Boulder Via in Lafayette in 2019 when FlexRide lacked resources
- RTD is now working with Lyft to determine if they can supplement any COVID service reductions
- CU-Denver has an NSF grant with many partners to explore microtransit service for the Valverde community in Denver
- DRCOG Ride Alliance Trip Exchange to coordinate human service transportation trips to carry more rides and be more efficient. A number of partners.
- 5 FlexRides have been discontinued according to RTD Service Policies & Standards