



Implementation in Central Puget Sound

Denver SCI Consortium Meeting
and Celebration
April 7, 2015

Central Puget Sound Region

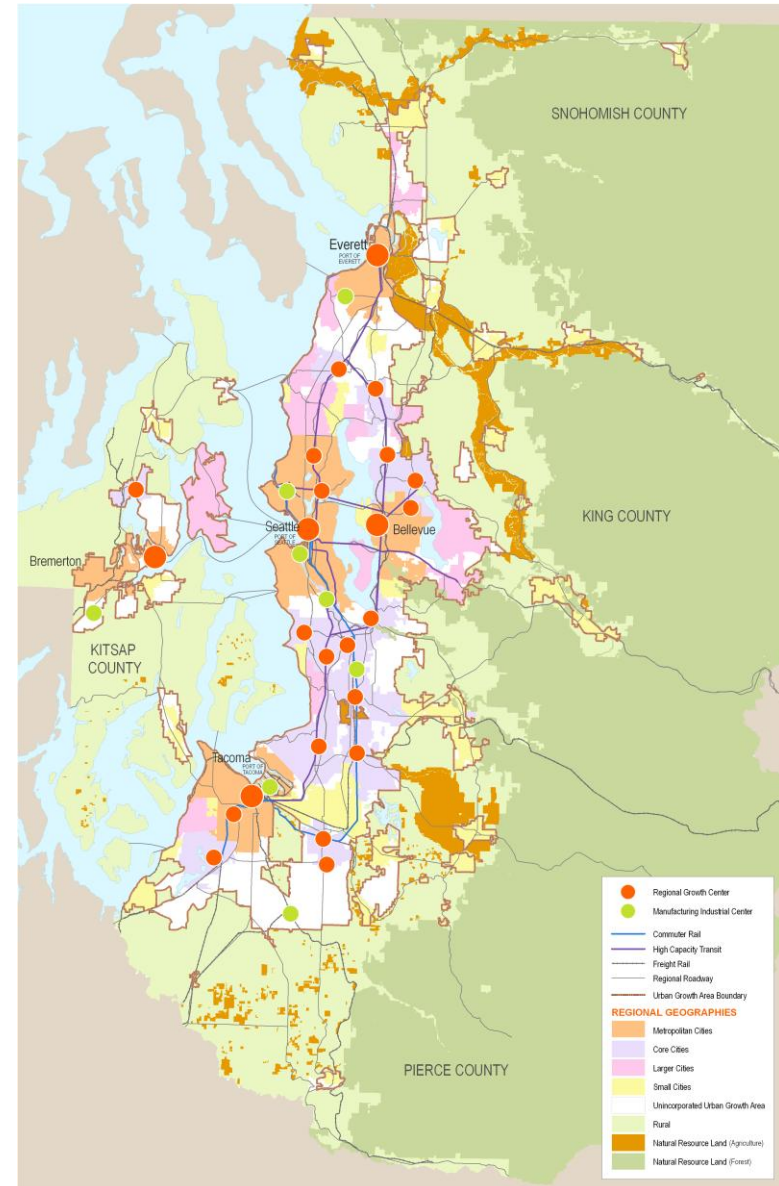
- 3.9 million people
- 1.9 million jobs
- 4 counties
- 82 cities & towns
- Urban & rural



Regional Plan for Sustainable Development

VISION 2040

- Urban Growth Area
- Centers strategy
- Fast, frequent public transportation
- Minimize incompatible rural, resource area development
- Different city roles



Transportation 2040



Aggressive Transit Program

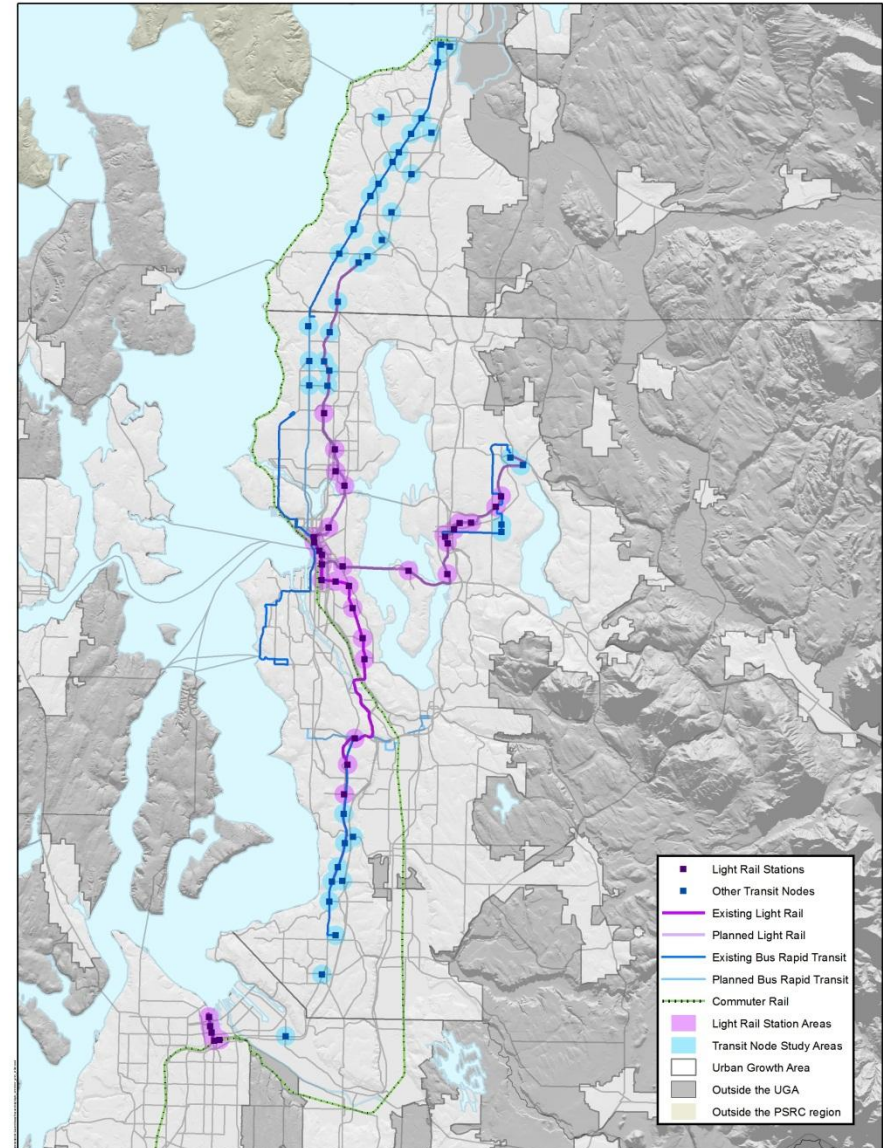
- \$100+ billion
- \$25+ high capacity transit
- Double local transit service
- Centers and station areas



SCI Grant: Implementing the Region's Plans



Corridor Planning
Regional Equity Network
Affordable Housing



Growing Transit Communities Strategy

THE PLEDGE:

Regional Compact



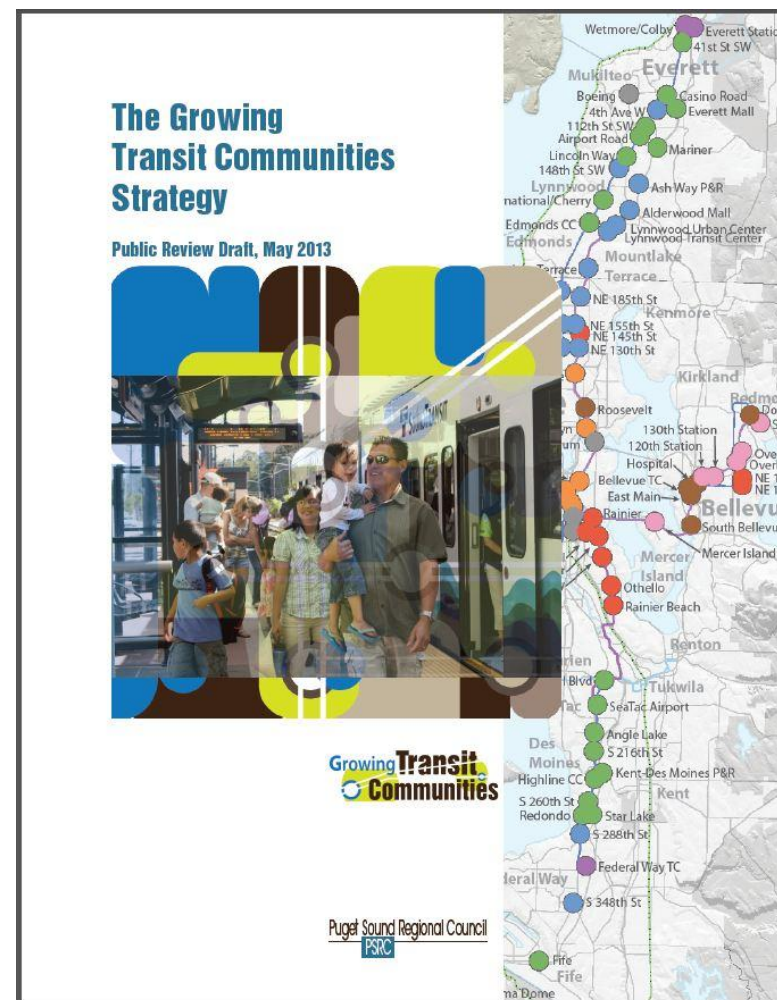
THE PLAYBOOK:

Recommendations & Typology



THE PLANS:

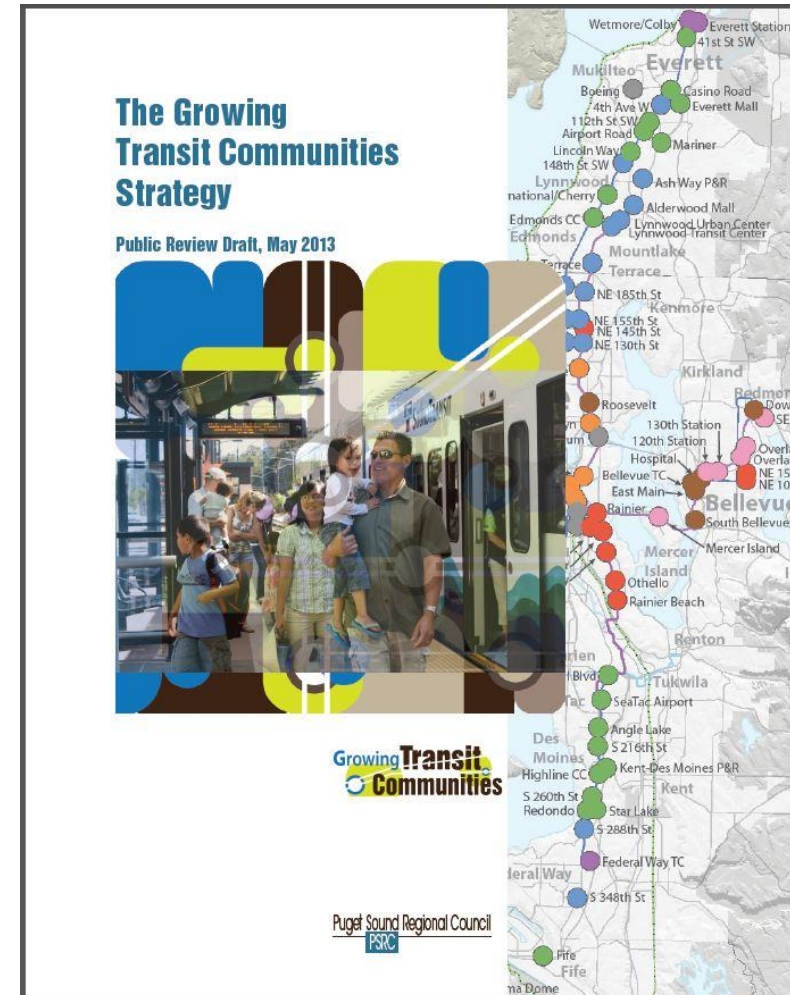
Individual Work Plans



THE PLEDGE: *Regional Compact*

THE PLANS:

Individual Work Plans



Regional Transit Communities Compact

- Problem statement
- Vision statement
- Endorse toolkit of strategies
- Goals



Growing Transit Communities Compact

Preamble

VISION 2040 was approved as the central Puget Sound region's plan for sustainable development following a broad-based, collaborative planning process. Central Puget Sound voters also approved a series of high-capacity light rail and transit projects—a commitment of approximately \$15 billion—that will serve the region's most densely populated and diverse communities for decades to come. These investments present a once-in-a-lifetime opportunity to shape the region's urban form and ensure that transportation improvements support sustainable development and foster vibrant, healthy neighborhoods for all.

Recognizing what this unprecedented opportunity means for the region and its residents, a broad coalition of stakeholders came together to identify what will be needed to create the sustainable, equitable communities envisioned in the region's plans. The result was the Growing Transit Communities Partnership.

The Partnership produced the Growing Transit Communities Strategy, which is supported by this Compact. Its goals and recommendations are wide-ranging, developed with the recognition that some tools and approaches may work in some locations but not in others, and that each partner retains flexibility and discretion in pursuing the strategies most appropriate to local needs and conditions. However, the envisioned outcomes require an ongoing dedicated partnership of many interests, including cities, counties, transit agencies, businesses and employers, housing authorities, public health agencies, affordable housing providers, educational institutions, community-based organizations, and development interests.

And while the Compact is not legally binding, it expresses the need for many and diverse partners to work together over time to achieve its goals, recognizing that opportunities for success cannot be achieved unless we work together.

Therefore, as signatories to the Compact, we commit ourselves to working in partnership to achieve the goals and strategies in this Compact, while respecting the diversity of interests, perspectives, and responsibilities throughout the region.

Whereas the central Puget Sound region has adopted VISION 2040, a long-range strategy to advance the ideals of our people, our prosperity and our planet by integrating land use, economic and transportation decisions in order to meet the needs of current and future generations, achieve economic prosperity with social equity, and support a healthy environment, including addressing global climate change; and

Whereas the central Puget Sound region is expected to add 1.3 million people and 1.1 million jobs by the year 2040; and

Whereas VISION 2040 includes among its goals (1) maintaining a prosperous and sustainable regional economy by supporting businesses and job creation, investing in all people, sustaining environmental quality,

Regional Goals

Attract more of region's residential and employment growth to high capacity transit communities

Region's light rail corridors have potential to attract at least **25%** of housing growth and **35%** of employment growth through 2040

Provide housing choices affordable to full range of incomes near high-capacity transit – **43% affordable**

Affordable housing need defined by current household incomes: **18%** of households earn between 50-80% of AMI, **12%** earn between 30-50%, and **13%** earn less than 30%

41 Compact Signatories *(April 2015)*

16 Local Jurisdictions

- Bellevue
- Edmonds
- Everett
- King County
- Kirkland
- Mercer Island
- Mountlake Terrace
- Pierce County
- Renton
- Redmond
- SeaTac
- Seattle
- Shoreline
- Snohomish County
- Tacoma
- Tukwila

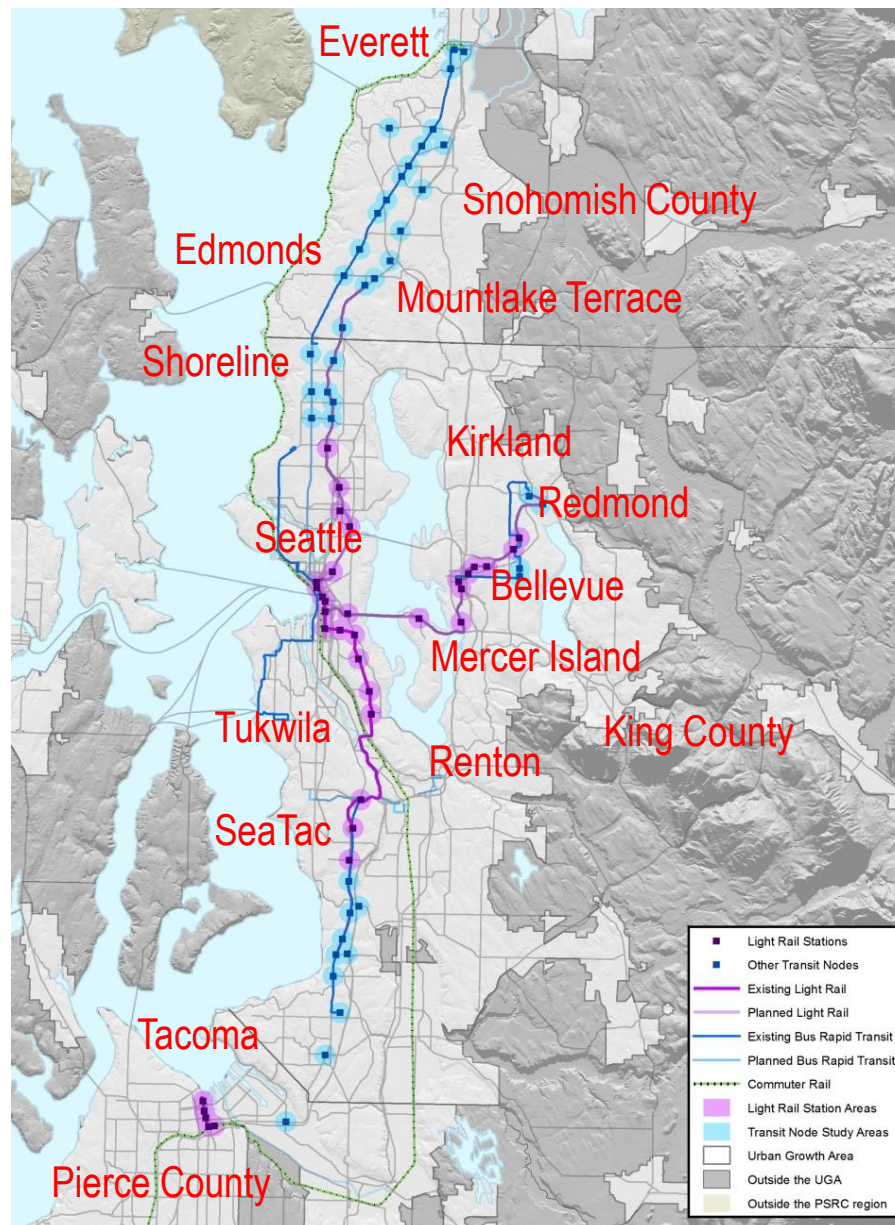
9 Other Public Agencies/Institutions

- A Regional Coalition for Housing (ARCH)
- Capitol Hill Housing
- King County Housing Authority
- Puget Sound Regional Council
- Seattle Housing Authority
- Sound Transit
- Tacoma Housing Authority
- Tacoma-Pierce County Board of Health
- University of Washington

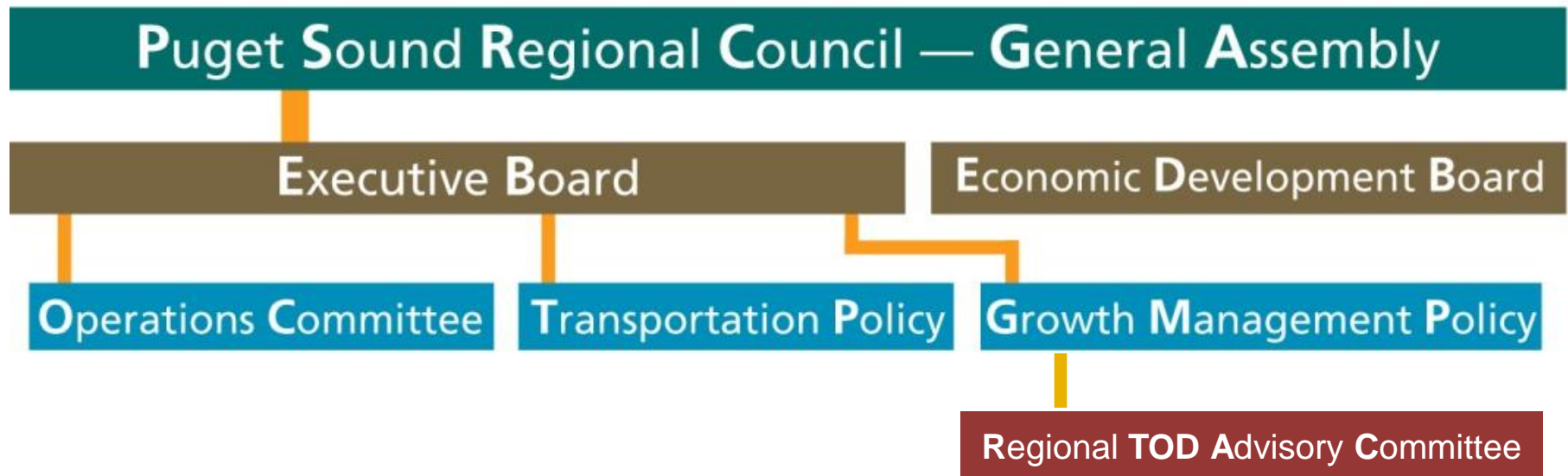
16 Non-Governmental Organizations

- Affordable Housing Consortium of Tacoma Pierce County
- Bellwether
- Cascade Bicycle Club
- Enterprise Community Partners
- Feet First
- Forterra
- Futurewise
- HomeSight
- Housing Consortium of Everett and Snohomish County
- Housing Development Consortium of Seattle and King County
- Impact Capital
- OneAmerica
- Puget Sound SAGE
- Quality Growth Alliance
- Regional Equity Network
- Transportation Choices Coalition

16 of 20 Corridor Jurisdictions



Regional TOD Advisory Committee



Growing Transit Communities Strategy

THE PLEDGE:

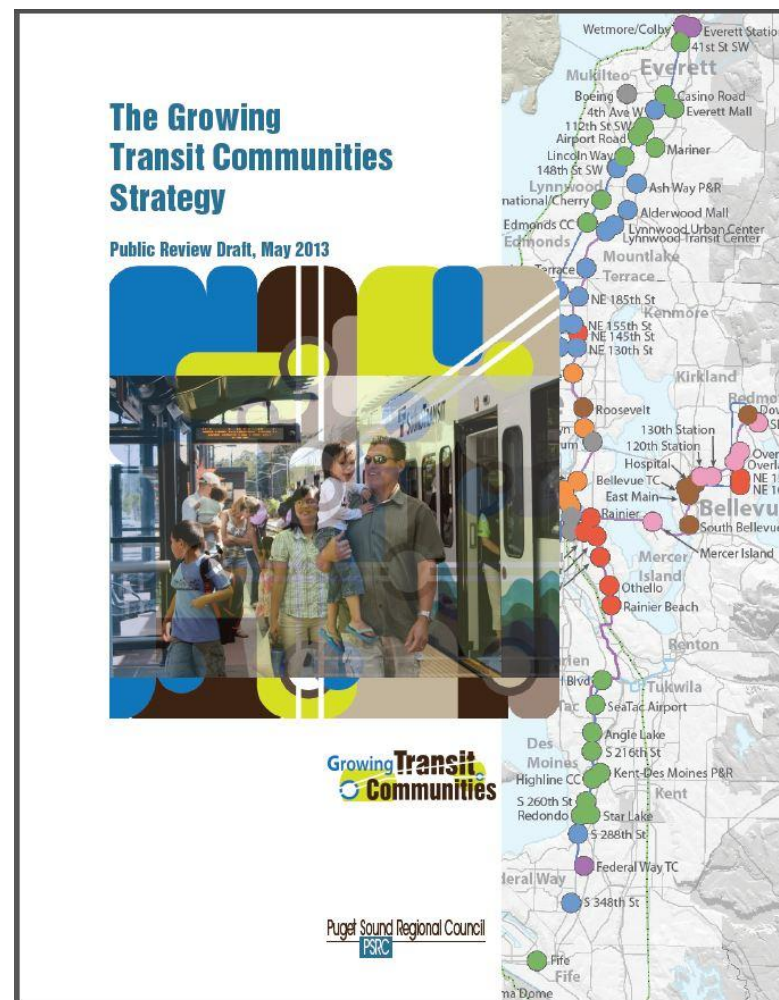
Regional Compact

THE PLAYBOOK:

Recommendations & Typology

THE PLANS:

Individual Work Plans



Recommended Strategies and Actions



1. Continuing regional program
2. Partnerships and collaboration
3. Community and stakeholder engagement
4. Build community capacity
5. Evaluation and monitoring



6. Station area plans
7. Efficient use of land
8. Transit system design
9. Innovative Parking Tools
10. Infrastructure and public realm investments



11. Housing needs assessment
12. Preservation and replacement
13. Housing investments in transit communities
14. TOD property acquisition fund
15. Value capture financing
16. Surplus public lands
17. Incentives
18. Fair housing



19. Community needs assessment
20. Environment and public health
21. Economic vitality and opportunity
22. Mobility
23. Education
24. Neighborhood safety

Typology Results

8 implementation approaches

- 1 Protect and Grow
- 2 Expand Housing Choices
- 3 Improve Access
- 4 Transform and Diversify
- 5 Stimulate Demand
- 6 Build Urban Places
- 7 Enhance Community
- 8 Preserve and Connect

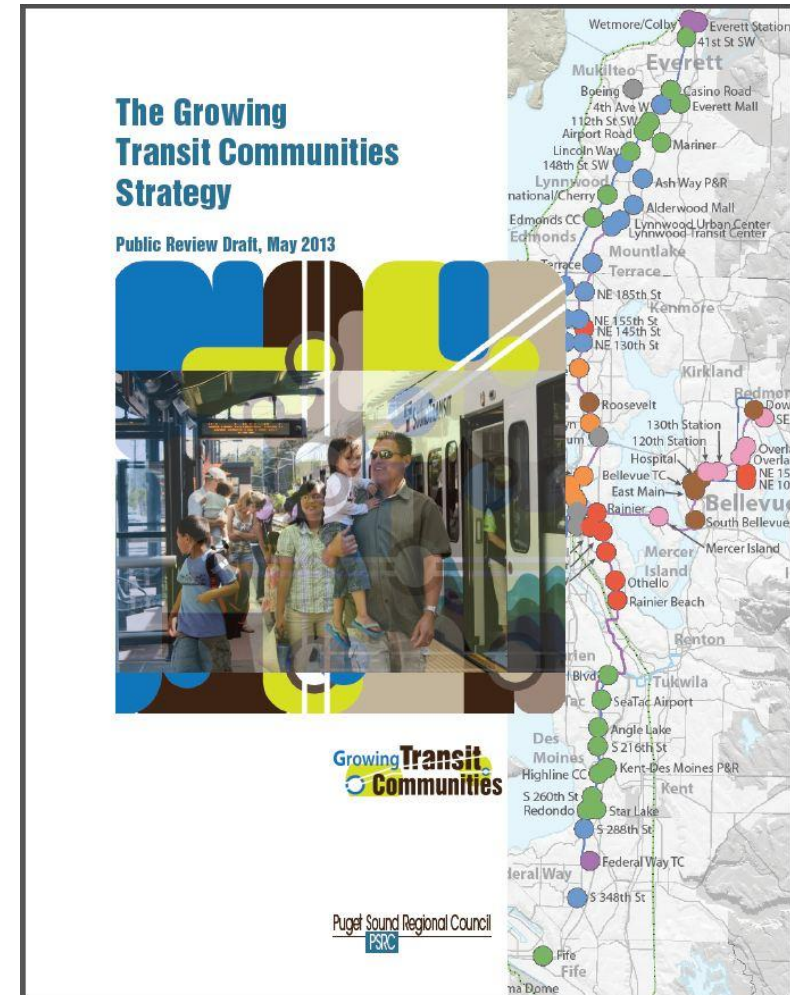


Growing Transit Communities Strategy

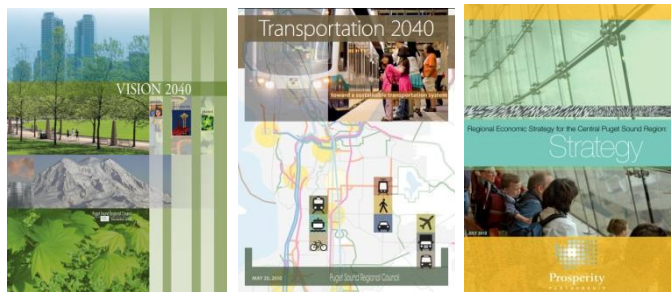
THE PLEDGE:
Regional Compact

THE PLAYBOOK:
Recommendations & Typology

THE PLANS:
Individual Work Plans



PSRC Implementation Work Plan



Transit Oriented Development

- Technical Assistance, Station Area Planning
- Regional TOD Advisory Committee
- Implementation Grant Framework

Housing

- Comprehensive Plan, Housing Element Updates
- Housing data & needs analyses

Update Regional Plans

- Regional Economic Strategy (2017)
- Transportation 2040 (2018)
- VISION 2040 (2020)



For More Information

Ben Bakkenta, Program Manager

bbakkenta@psrc.org (206) 971-3286

psrc.org





Extra Slides



Puget Sound Regional Council
PSRC

People + Place Implementation Typology



Regional TOD Advisory Committee

Advance GTC Strategy

- Provide guidance to PSRC and other partners
- Build coalitions across the region
- Generate support at regional, state and federal levels

Work program

- 2014: Guidance for local comprehensive planning
Recommended state legislative priorities
- 2015: Guidance on PSRC policy framework for transportation funding
Guidance on designation of subregional/countywide centers
Outreach events and technical assistance