



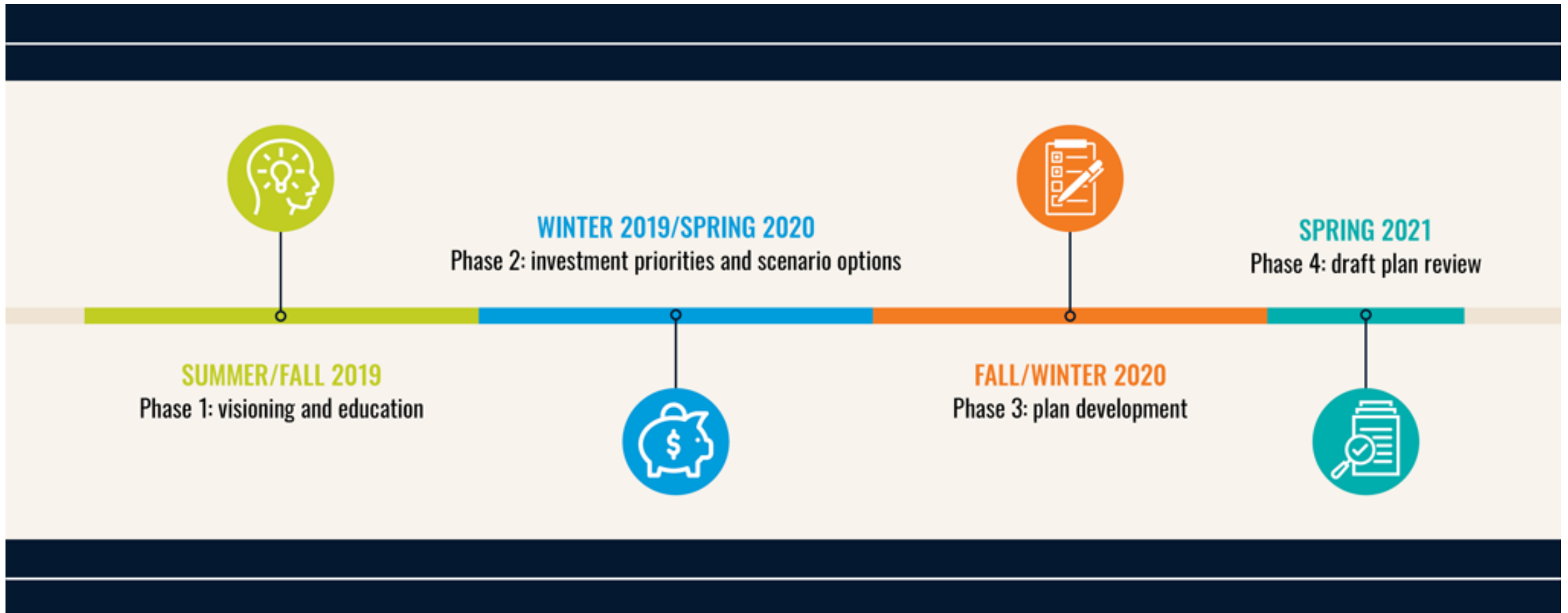
2050 Metro Vision Regional Transportation Plan – Proposed Scenarios to Test

Board of Directors
December 18, 2019

Presented by:
Jacob Riger, AICP

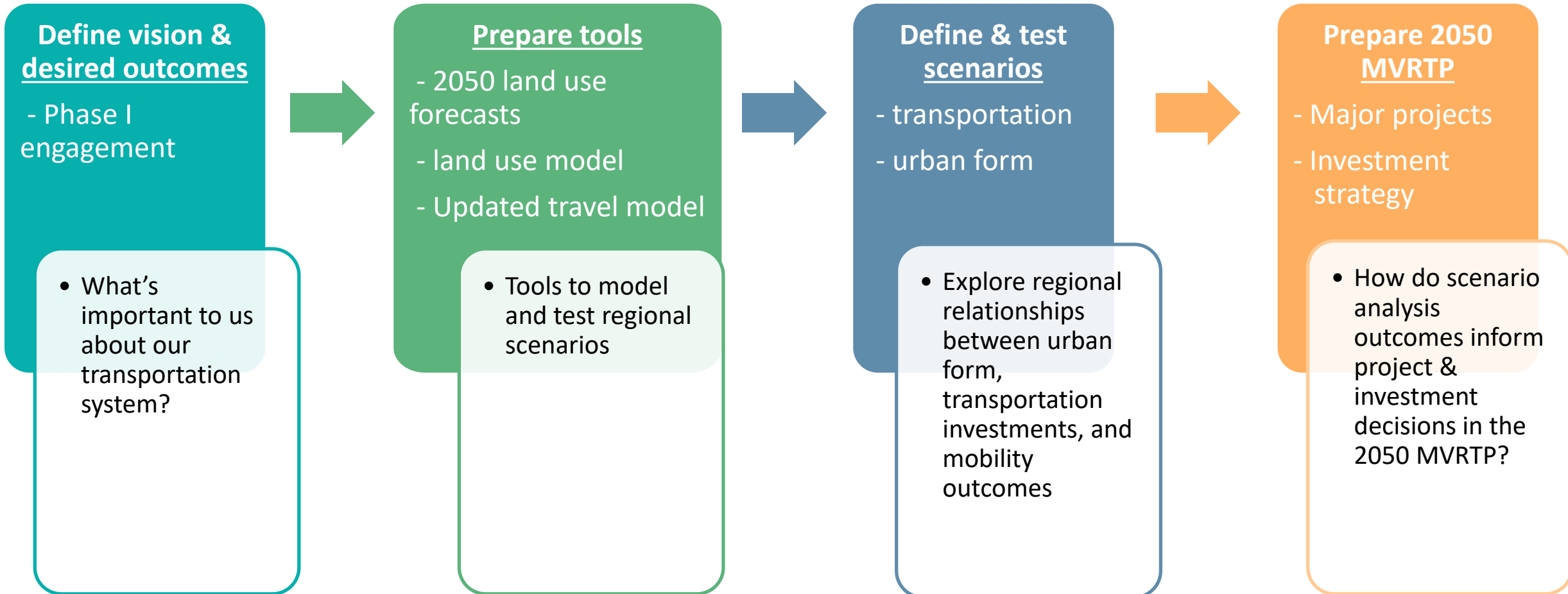


2050 MVRTP major milestones & timeline





2050 MVRTP & scenario planning process framework





Regional scenario planning context

- Explores “**what if**” alternative futures
- Tests alternative transportation and urban form **approaches** through the lens of Metro Vision
- **Relative** comparisons between scenarios and baseline
- Provide **guidance and direction** for transportation investments in the 2050 MVRTP

Proposed scenarios to test

Proposed Scenario	Key Scenario Concept	Land Use Components	Transportation Components
Baseline	comparison with scenarios below	base development constraints (regulatory & natural)	2040 Fiscally Constrained RTP
Transit Emphasis	transit network & service emphasis	upzone housing/jobs at transit stations, urban centers & along frequent-service transit lines	<ul style="list-style-type: none"> • RTD federal & state \$\$ BRT corridors • finish FasTracks and test extensions <ul style="list-style-type: none"> • free fares • increased transit frequency • expand/improve access to transit
Regional Highway & Operations Emphasis	improve operations & traffic flow on highways/freeways	base development constraints (regulatory & natural)	<ul style="list-style-type: none"> • build out freeway managed lanes system with direct connections (HPTE Express Lanes Master Plan) • roadway operations/incident management strategies
Freeway/Interstate Congestion Emphasis	build out of freeway/interstate system to address off-peak congestion	base development constraints (regulatory & natural)	add general purpose lanes to region's freeways & interstates with severe off-peak congestion
Technology/Connected Vehicles Emphasis	version A: autonomous vehicles (AVs) benefit regional mobility	base development constraints (regulatory & natural)	increase operating capacities on highways/freeways
	version B: Avs impact regional mobility	base development constraints (regulatory & natural)	decrease operating capacities on highways/freeways
Travel Choices Emphasis	Increase travel and mobility choices along region's major arterials	upzone for redevelopment/mixed uses along major arterials & urban centers	<ul style="list-style-type: none"> • Increase walking/bicycling attractiveness (complete streets approach) • Telecommuting & other TDM strategies • Increase access to base transit network • Reduce speeds on major arterials (safety)
Regional Jobs/Housing Balance Emphasis	Better balance travel patterns at the regional level by locating housing and jobs closer together	<ul style="list-style-type: none"> • upzone for housing in/near employment centers • upzone housing/jobs along major transportation facilities & urban centers 	



Transit Emphasis scenario

- *Key concept: transit network and service emphasis*
- Key land use component:
 - Upzone housing/jobs at transit stations, urban centers & along frequent transit service lines
- Key transportation components:
 - RTD BRT study federal & state funding candidate corridors
 - Finish FasTracks & key extensions
 - Free fares (conceptual)
 - Increased transit frequency
 - Expand/improve transit access



Regional Highway & Operations Emphasis scenario

- *Key concept: improve operations & traffic flow on region's highways/freeways*
- Key land use component:
 - Base development constraints (regulatory & natural)
- Key transportation components:
 - Build out freeway managed lanes system with direct connections (HPTE Express Lanes Master Plan)
 - Roadway operations & incident management strategies



Freeway/Interstate Congestion Emphasis scenario

- *Key concept: build out freeway/interstate system to address off-peak congestion*
- Key land use component:
 - Base development constraints (regulatory & natural)
- Key transportation component:
 - Add general purpose lanes to region's freeways & interstates with severe off-peak congestion



Technology/Connected Vehicles Emphasis scenarios

- *Key concepts: mobility technology & autonomous vehicles benefit (version A) or impact (version B) regional mobility*
- Key land use component:
 - Base development constraints (regulatory & natural)
- Key transportation components:
 - Increase or decrease operating capacities on highways/freeways



Travel Choices Emphasis scenario

- *Key concept: increase travel & mobility choices along region's major arterials*
- Key land use component:
 - Upzone for redevelopment/mixed uses along major arterials & urban centers
- Key transportation components:
 - Increase walking/bicycling attractiveness (complete streets approach)
 - Telecommuting & other TDM strategies
 - Increase access to base transit network
 - Reduce speed limits on major arterials (safety emphasis)



Regional Jobs/Housing Balance Emphasis scenario

- *Key concept: better balance regional travel patterns by locating housing and jobs closer together*
- Key land use/transportation components:
 - Upzone for housing in/near employment centers
 - Upzone housing/jobs along major transportation facilities & urban centers



Next steps

- October-December: input from: public, county forums, TAC, RTC, Board
- January-March: conduct scenario analysis
- April: initial scenario results at RTC

THANK YOU!