



# Regional Multimodal Freight Plan Update

Regional Transportation Committee  
May 19, 2026



# Agenda

- Overview.
- Update:
  - Progress to date.
  - Coordination.
- Upcoming Work:
  - Best Practices/Emerging Trends.
  - Performance Measures.
  - Engagement.
- Next steps.

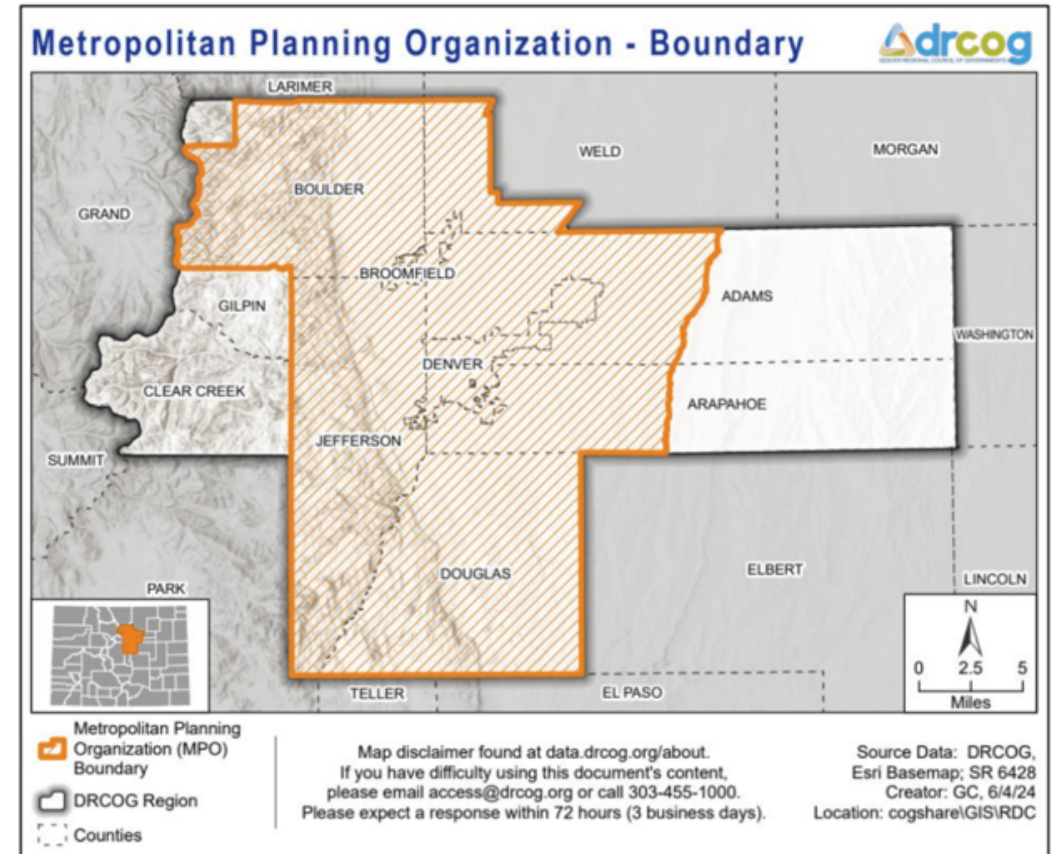


# Project Scope



## Project Scope

1. Existing Conditions
  - Literature Review.
  - Update Data.
  - Regional Freight Profile.
2. Land Use, Facility, Infrastructure, Policy
  - Cluster Analysis.
  - Review of land use plans.
  - Policy Review.
3. Freight Best Practices Emerging Trends
  - Last-Mile Delivery Needs.
  - EV Infrastructure .
4. Priorities and Performance Measures
  - Setting goals, objectives, and metrics.



# Project Overview



Multimodal  
mobility



Safety



Air quality



Regional  
transit



Active  
transportation



Freight

- DRCOG's primary metric of success is to expand the current Freight Plan to focus on strategic planning approaches:
  - Update and visualize data.
  - Highlight best practices.
  - Identify investment areas for freight planning and infrastructure improvements.
  - Stakeholder input.



# Outreach

## Freight Steering Committee

- This diverse stakeholder group has provided input on all aspects of the plan including **strategic guidance**, **freight policy** and **alignment** with agencies goals, plans and priorities.
- Provide real-world **ground truthing**.
- **Validate** freight data, bottlenecks and regional freight challenges.
- **Champion** the plan .
- Identify community and industry **impacts**.

## Stakeholder Engagement Survey



# FSC Input

	Opportunities	Concerns	Strengths
Safety	<ul style="list-style-type: none"> <li>• Overnight delivery requirements in CBDs</li> <li>• Size considerations for oversize/overweight</li> </ul>	<ul style="list-style-type: none"> <li>• Detours during road closings</li> <li>• Lack of truck parking</li> <li>• Speed</li> </ul>	<ul style="list-style-type: none"> <li>• Growing awareness</li> <li>• Resources through CDOT-Trip Planner, Training</li> <li>• Data- DRCOG, CDOT, DOR</li> </ul>
Maintenance	<ul style="list-style-type: none"> <li>• Identified specific locations that need attention</li> <li>• Should we add an infrastructure specific goal?</li> <li>• Prioritize high volume roadways</li> </ul>	<ul style="list-style-type: none"> <li>• Fuel tax that trucks pay is not going to improve truck routes to keep them maintained</li> <li>• Local roadways not built for large vehicles</li> <li>• Lack of underpass lighting</li> </ul>	<ul style="list-style-type: none"> <li>• Policy implementation from CDOT</li> </ul>
Connectivity	<ul style="list-style-type: none"> <li>• Visualization/modeling of small vehicle/last mile movement patterns</li> <li>• Heavy vehicle traffic speed limits-enforcement and placement</li> <li>• DRCOG, NFRMPO, and PPACG are all working on a freight plan at the same time. Opportunity to ensure connectivity along front range</li> </ul>	<ul style="list-style-type: none"> <li>• Rapidly growing industrial areas</li> <li>• Disconnect between where employees live and work</li> <li>• Increasing needs for last mile delivery</li> </ul>	<ul style="list-style-type: none"> <li>• CDOT FAC</li> </ul>
Reliability	<ul style="list-style-type: none"> <li>• Freight hubs- micromobility (Vail Village)</li> <li>• Hazardous materials routing opportunity for more efficient travel</li> </ul>	<ul style="list-style-type: none"> <li>• Lack of truck parking-biowaste</li> <li>• Appropriate parking locations for freight</li> <li>• Lack of good information. Causational safety information is lacking. Often times the causation is not necessarily the truck driver's fault.</li> </ul>	<ul style="list-style-type: none"> <li>• Wide roadways and ROW</li> <li>• Technology package training</li> <li>• CDOT Trip Planner</li> </ul>

# Project Overview



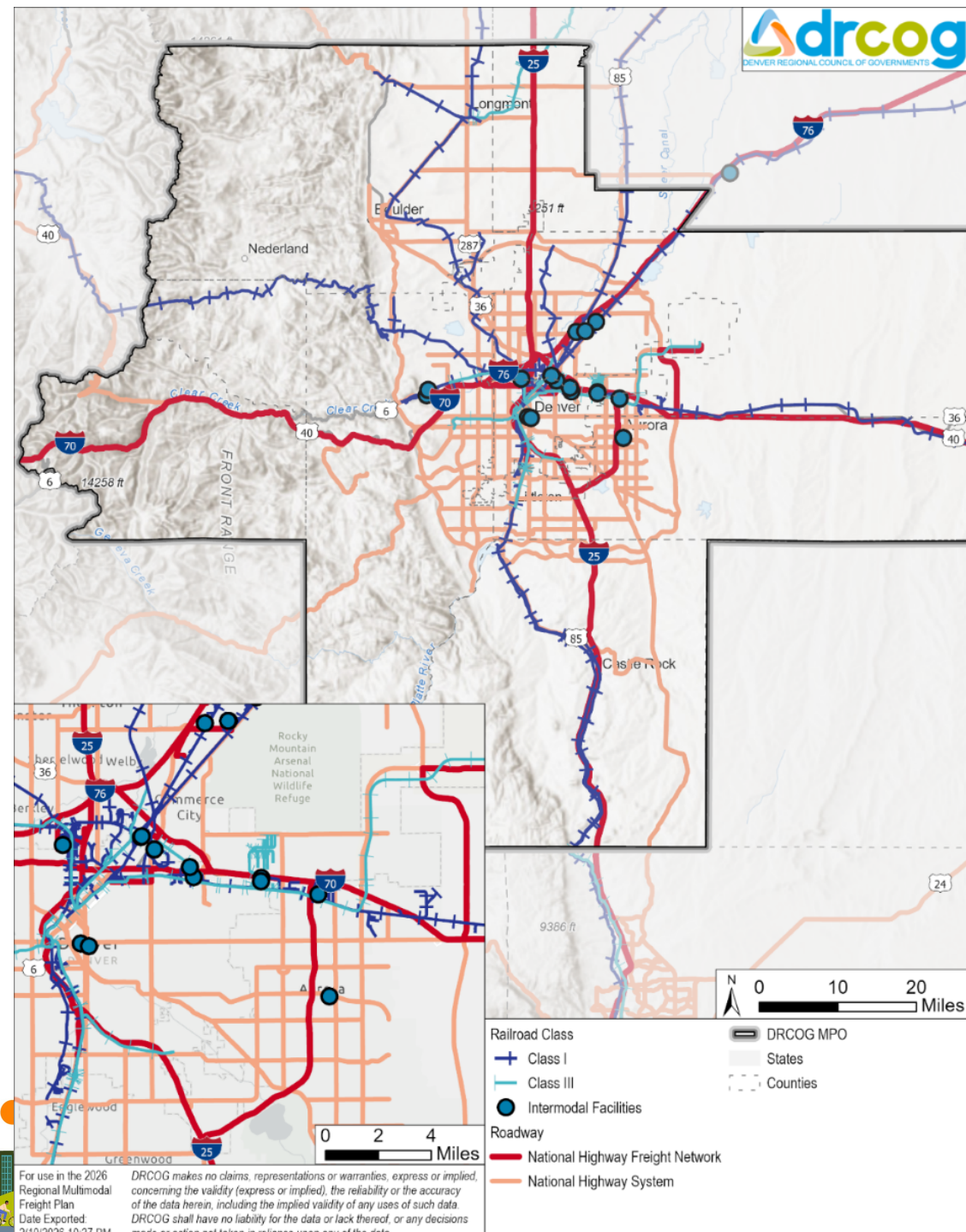
Schedule

Date	Task
June 2025	Kick-Off
November 2025	Existing Conditions
April 2025	Land Use and Policy
May 2026	Best Practices, Performance Measures, Engagement
July 2026	Draft Plan
October 2026	Final Plan



# Existing Conditions

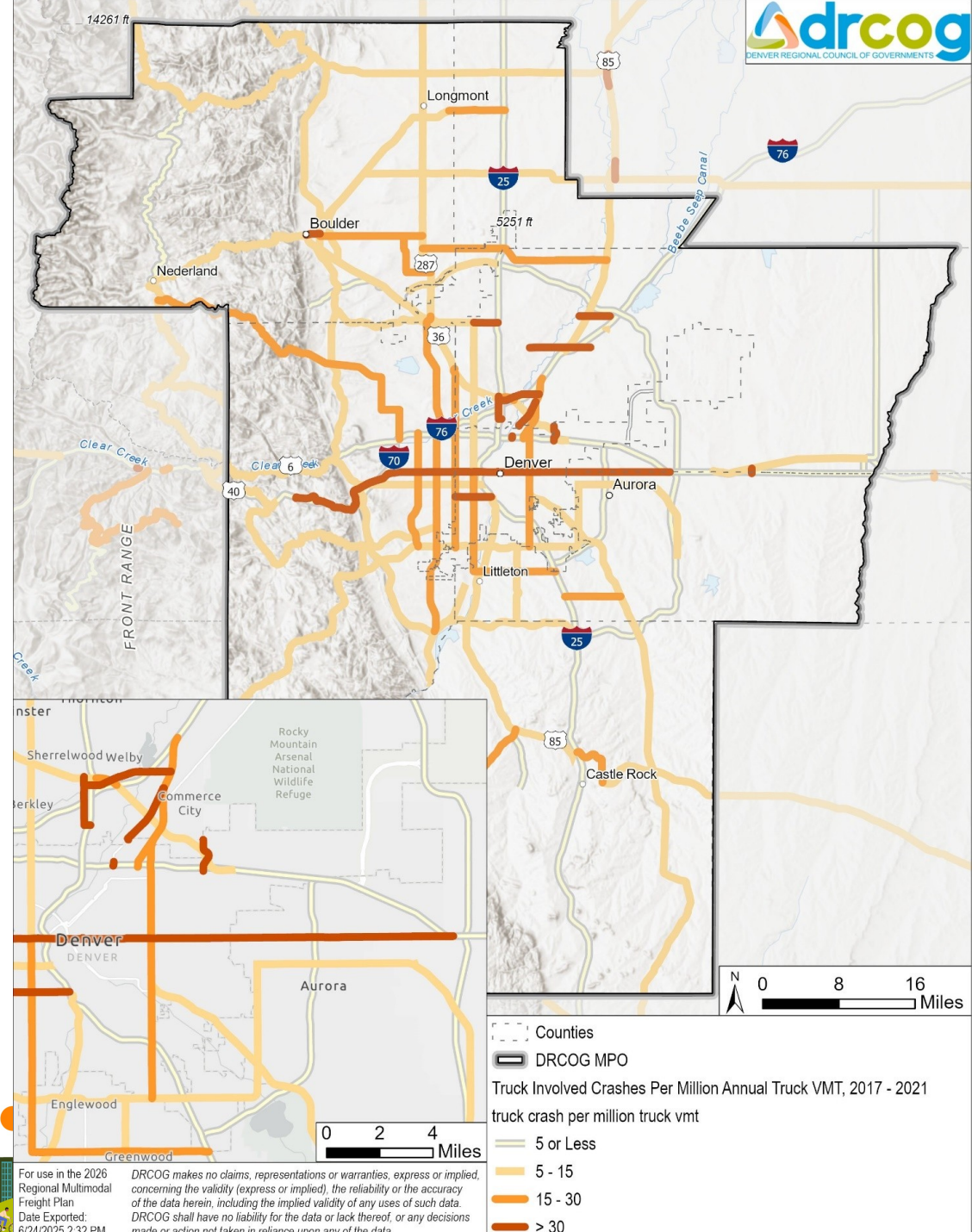
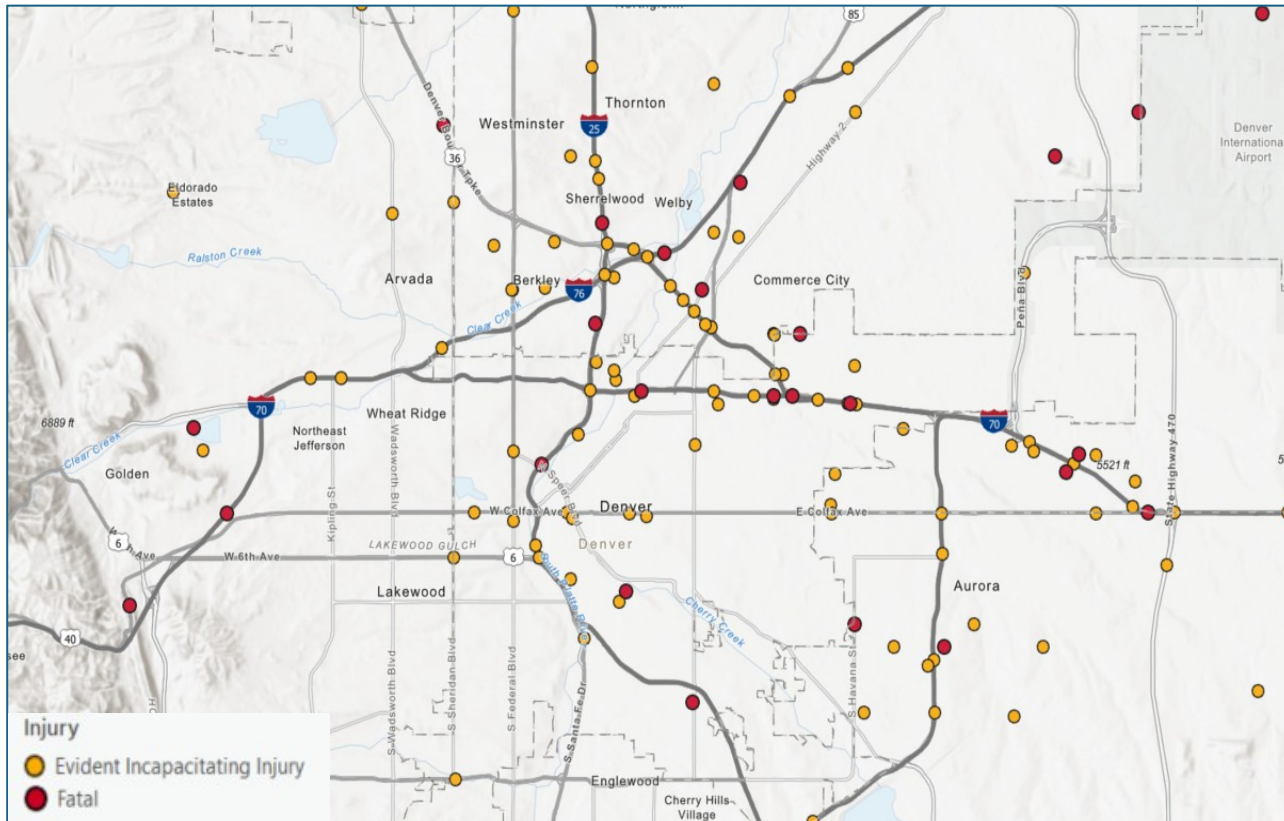
- Freight system overview.
  - Rail crossings.
  - Highway freight network.
  - Intermodal terminals.
- System use and performance.
- Updated data and analysis.



For use in the 2026 Regional Multimodal Freight Plan  
 Date Exported: 11/05/2025 10:27 AM  
 DRCOG makes no claims, representations or warranties, express or implied, concerning the validity (express or implied), the reliability or the accuracy of the data herein, including the implied validity of any uses of such data. DRCOG shall have no liability for the data or lack thereof, or any decisions

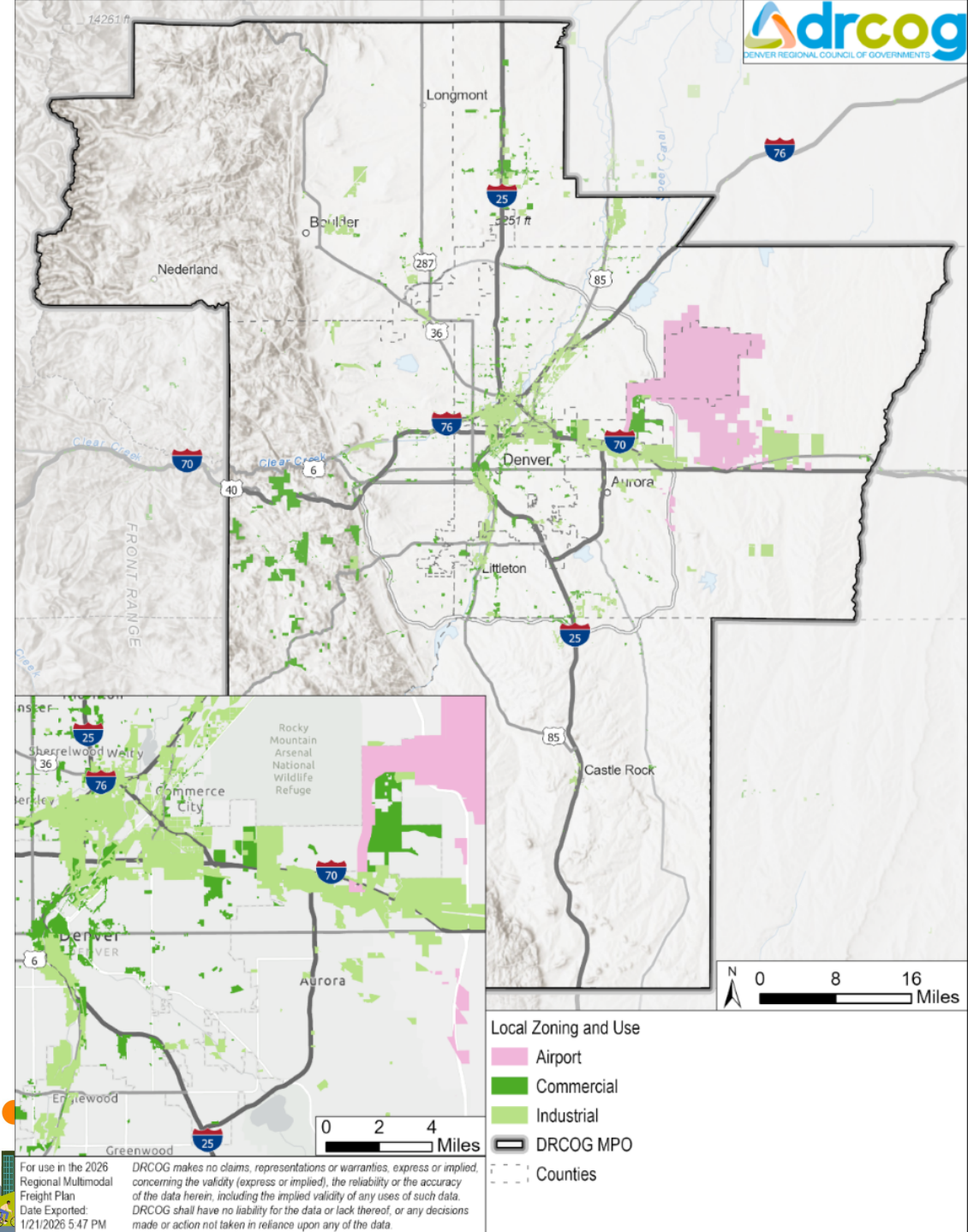
# Crash Hotspot

- Colfax Ave has one of the highest crash rates in the region.



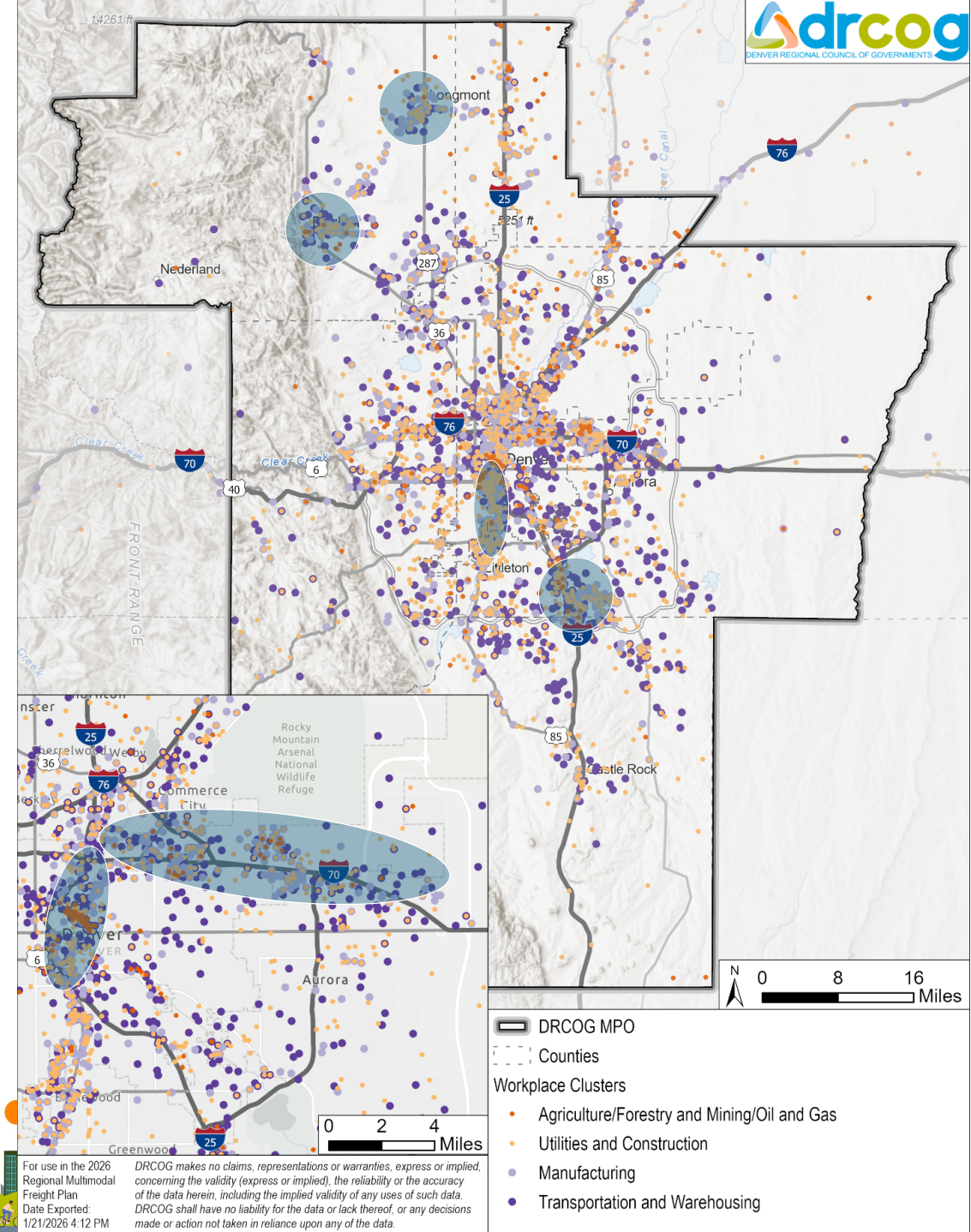
# Land Use/Policy

- Tier III Update.
- Review of land use plans transportation elements.
- Example policy and design standards.



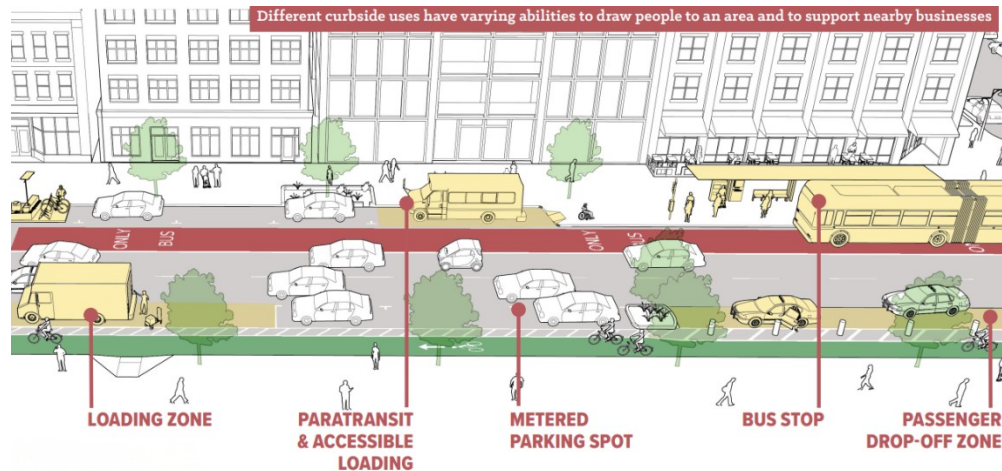
# Freight Business Clusters

- Business Density.
- Land Use Analysis:
  - Zoning/Uses.
  - Employment.
  - LOCUS.
- Correspondence to 2020 Multimodal Freight Plan.



# Best Practices/Emerging Trends

- Curbside management.
- Micro-hubs.
- Alternate Delivery Methods.
- Emission reduction in delivery.



# Freight Performance Measures



- Build on Federal and State measures.
- Utilizing available data sources.
- Connection to investment decisions.
- Consideration of multi-modal performance measures.



# Next Steps

- Finalize Land Use/Policy Section.
- Review of Best Practices/Emerging Trends Section.
- Review of Engagement Section.



# Thank you!

**Cole Neder**

*Senior Transit Planner*

[cneder@drcog.org](mailto:cneder@drcog.org)

