



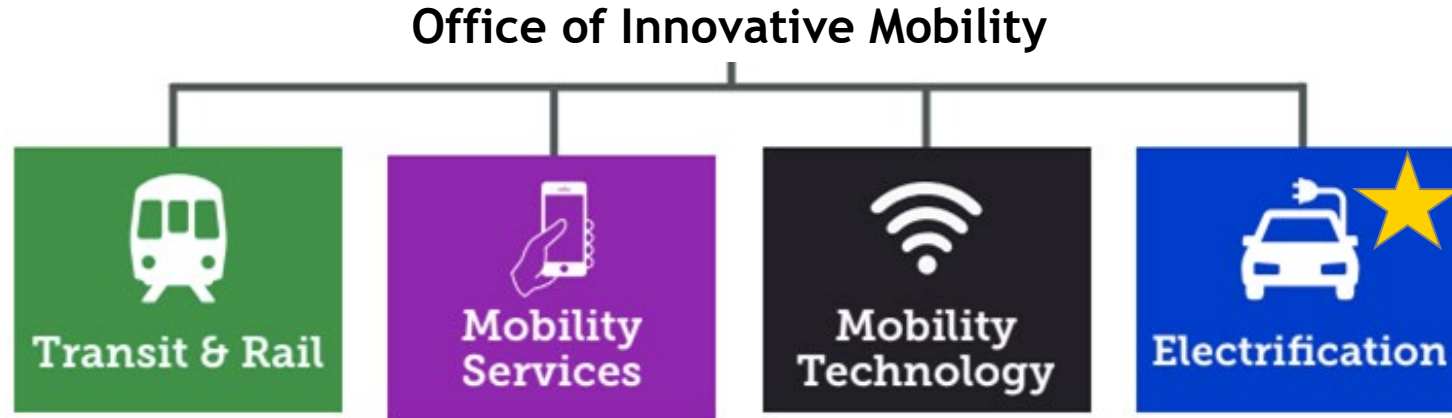
COLORADO

Department of Transportation

CDOT Division of Transit & Rail Transit Connections Study



Division of Transit & Rail



CDOT's Division of Transit & Rail (DTR)

Responsible for the planning, development, operation, and integration of transit and rail into the statewide transportation system

Transit Planning & Operations



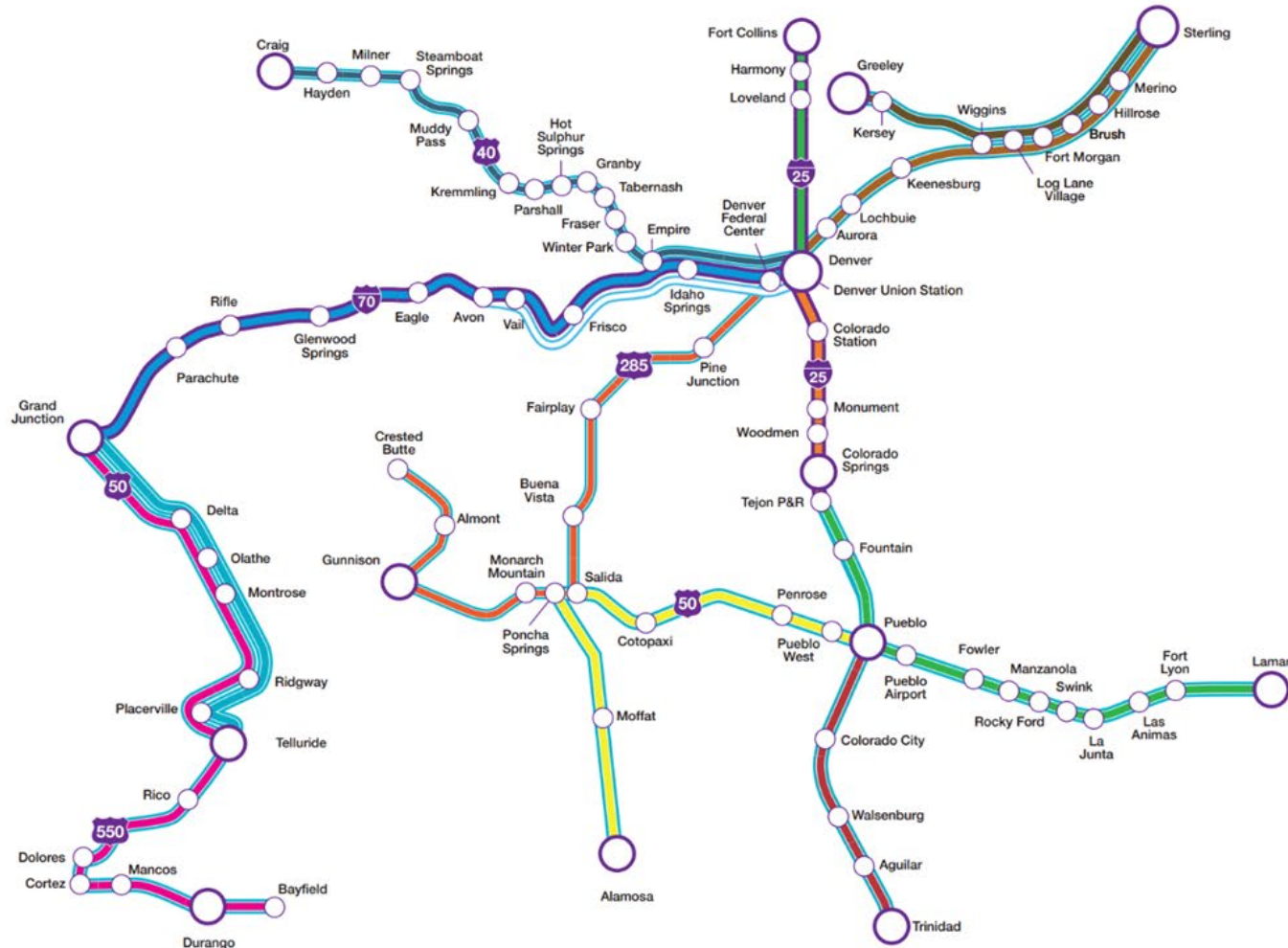
Transit Programs



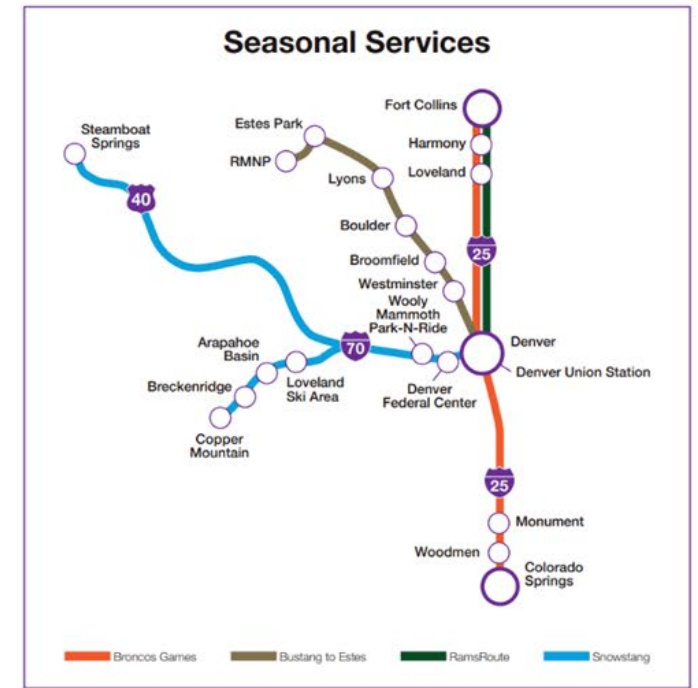
Passenger Rail



Bustang Family of Services



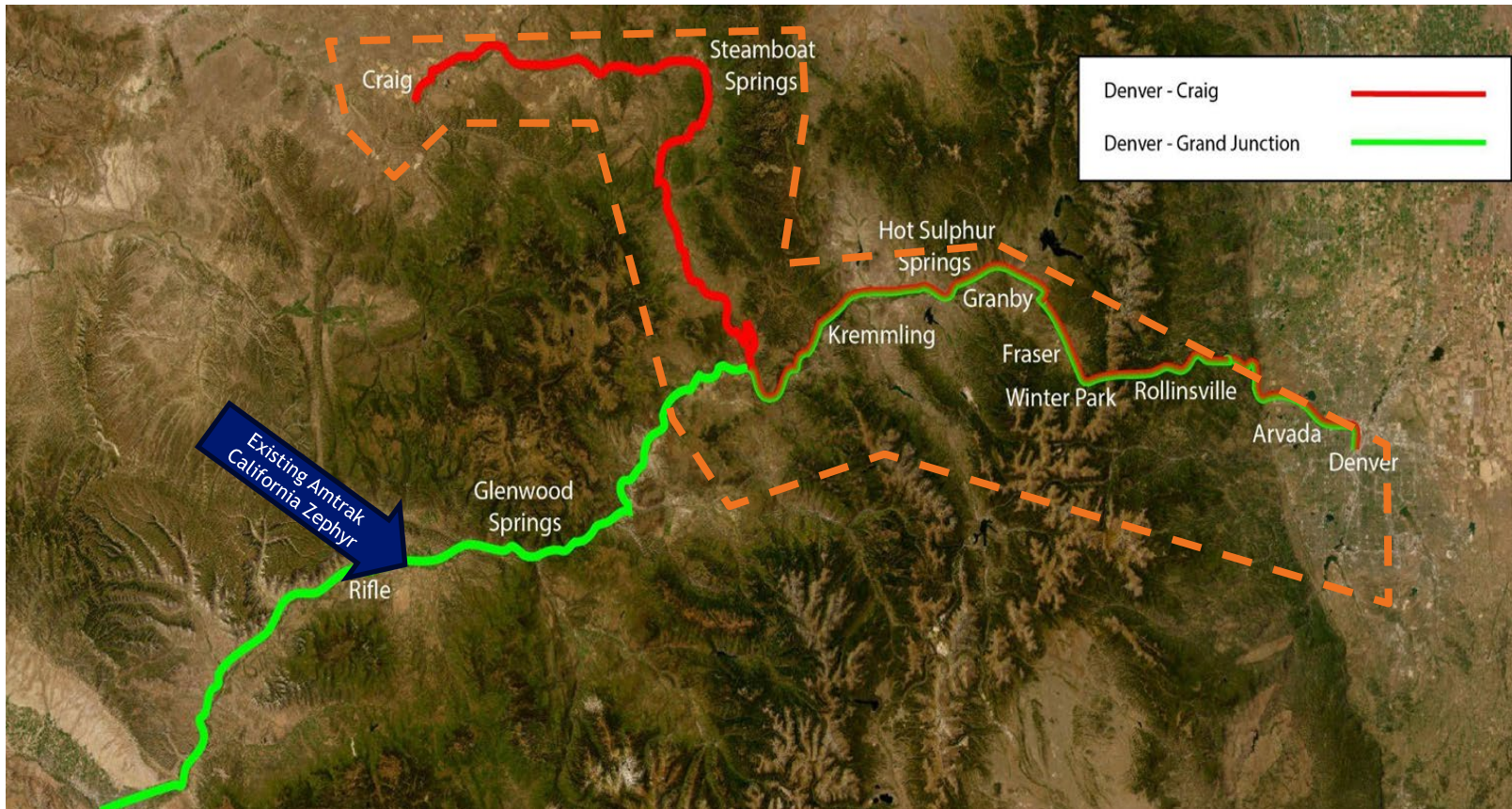
- Bustang: Colorado Springs – Denver
- Outrider: Alamosa – Pueblo
- Outrider: Durango – Grand Junction
- Outrider: Sterling – Greeley
- Bustang: Fort Collins – Denver
- Outrider: Craig – Denver
- Outrider: Lamar – Colorado Springs
- Outrider: Sterling – Denver
- Bustang: Grand Junction – Denver
- Outrider: Crested Butte – Denver
- Outrider: Pueblo – Trinidad
- Outrider: Telluride – Grand Junction
- Pegasus: Avon – Denver



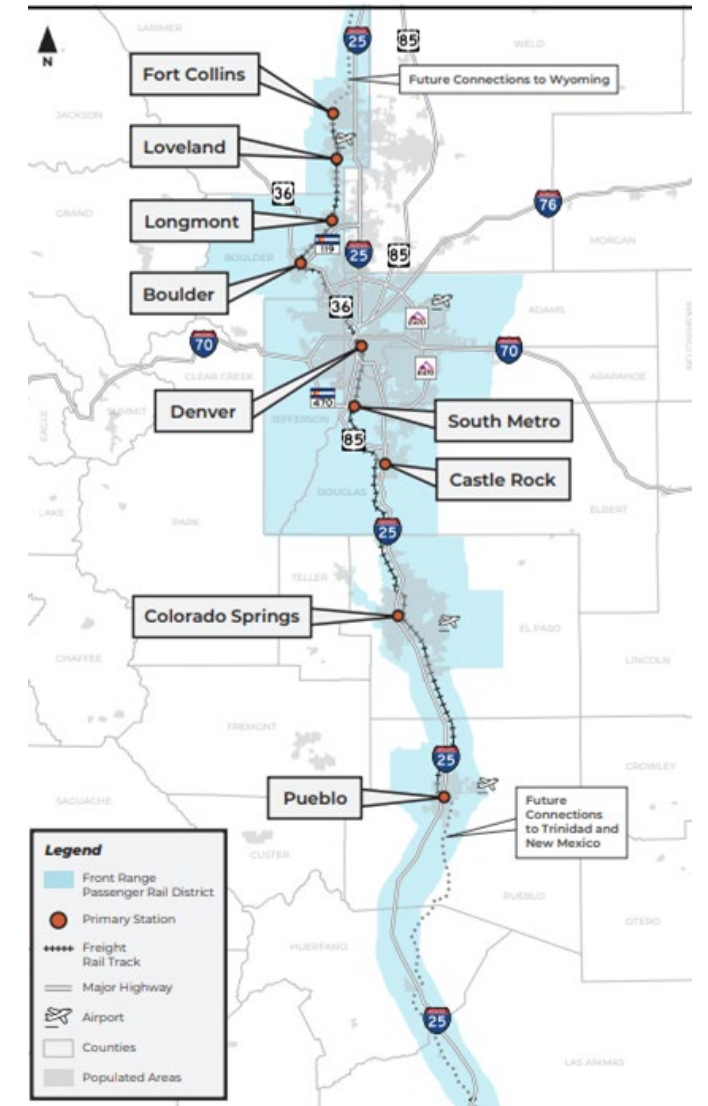


Passenger Rail

Mountain Rail



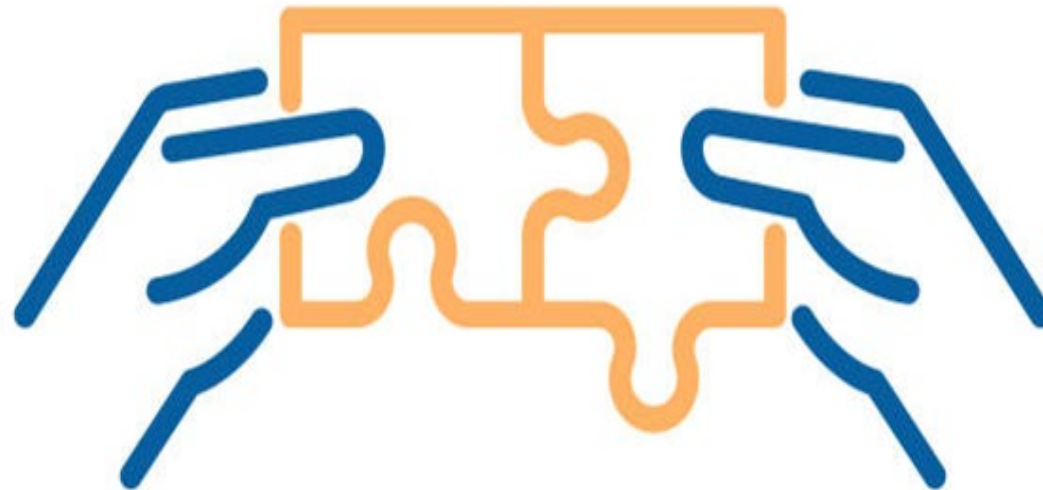
Front Range Passenger Rail





Transit Connections Study Purpose

The Transit Connections Study (TCS) aims to provide a strategic vision for an interconnected statewide transit network. This includes improving and expanding the Bustang Family of Services, adding passenger rail services and fostering connections with intercity, regional and local transit/mobility providers. This study will help inform CDOT's transit planning and investment decisions for the next decade.





The TCS envisions a future where Colorado's Statewide Transit Network is:

Comprehensive

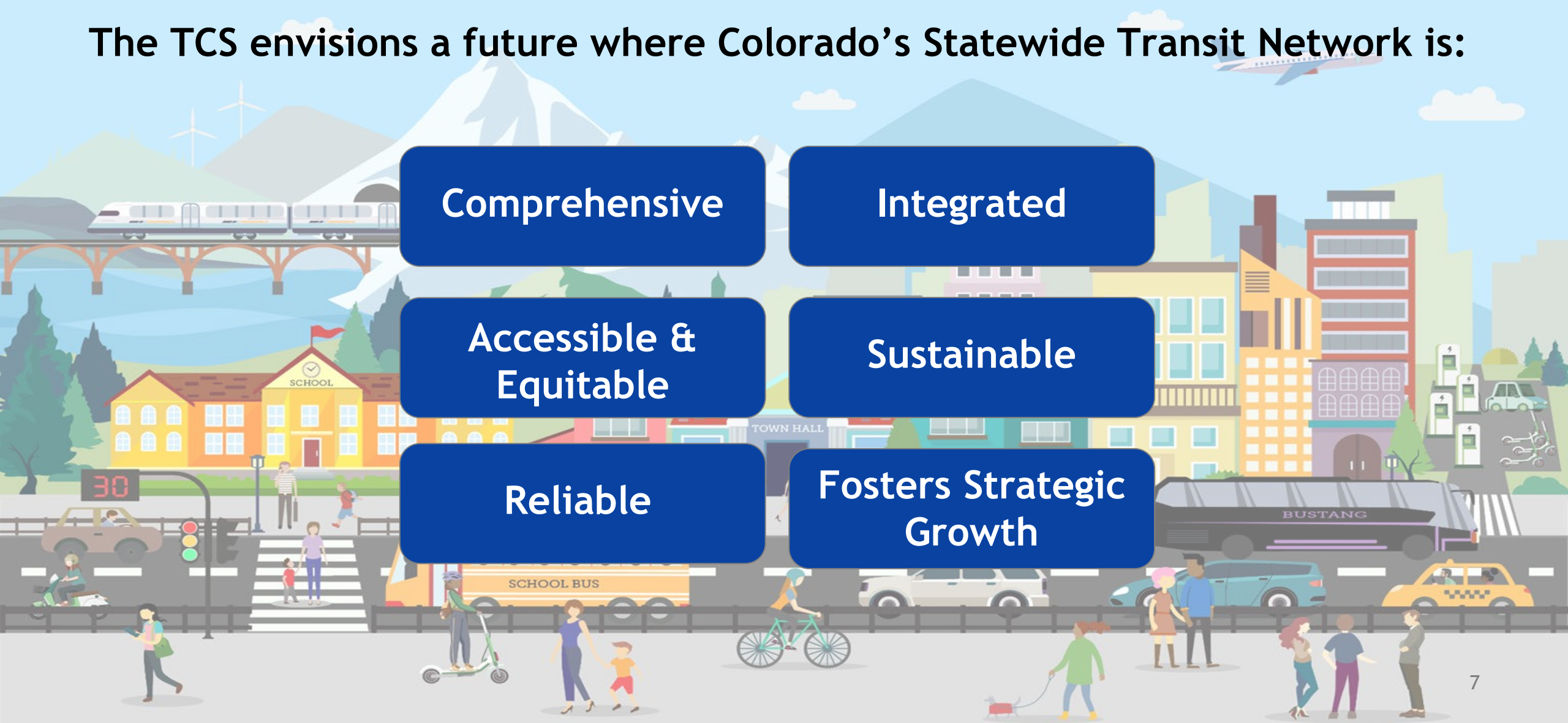
Integrated

Accessible &
Equitable

Sustainable

Reliable

Fosters Strategic
Growth





Process:

- Reviewing the existing statewide transit network (Current State of Transit)
- Identifying network gaps, service needs and existing connections between intercity, regional, and local services (Gaps Analysis)
- Opportunities to fill gaps and connect state supported services with intercity, regional, and local providers (Recommendations)
- Expanding and improving the Bustang Family of Services, connections to FRPR and MR (Recommendations)

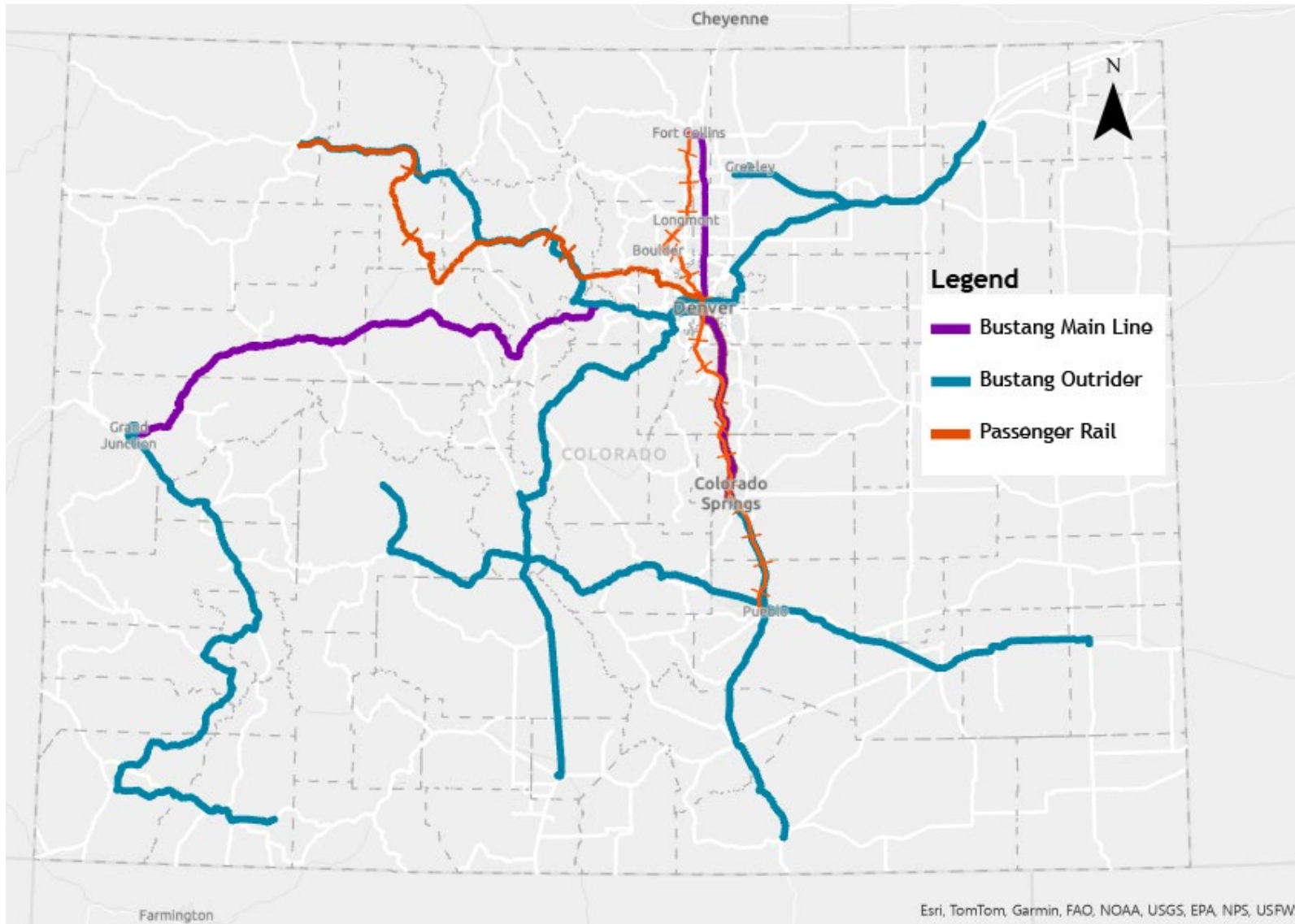
Outcomes:

- Baseline data
- Transit Priority Framework
- Integrating state supported services into the statewide transit network
- Service expansion and optimization of the Bustang Family of Services

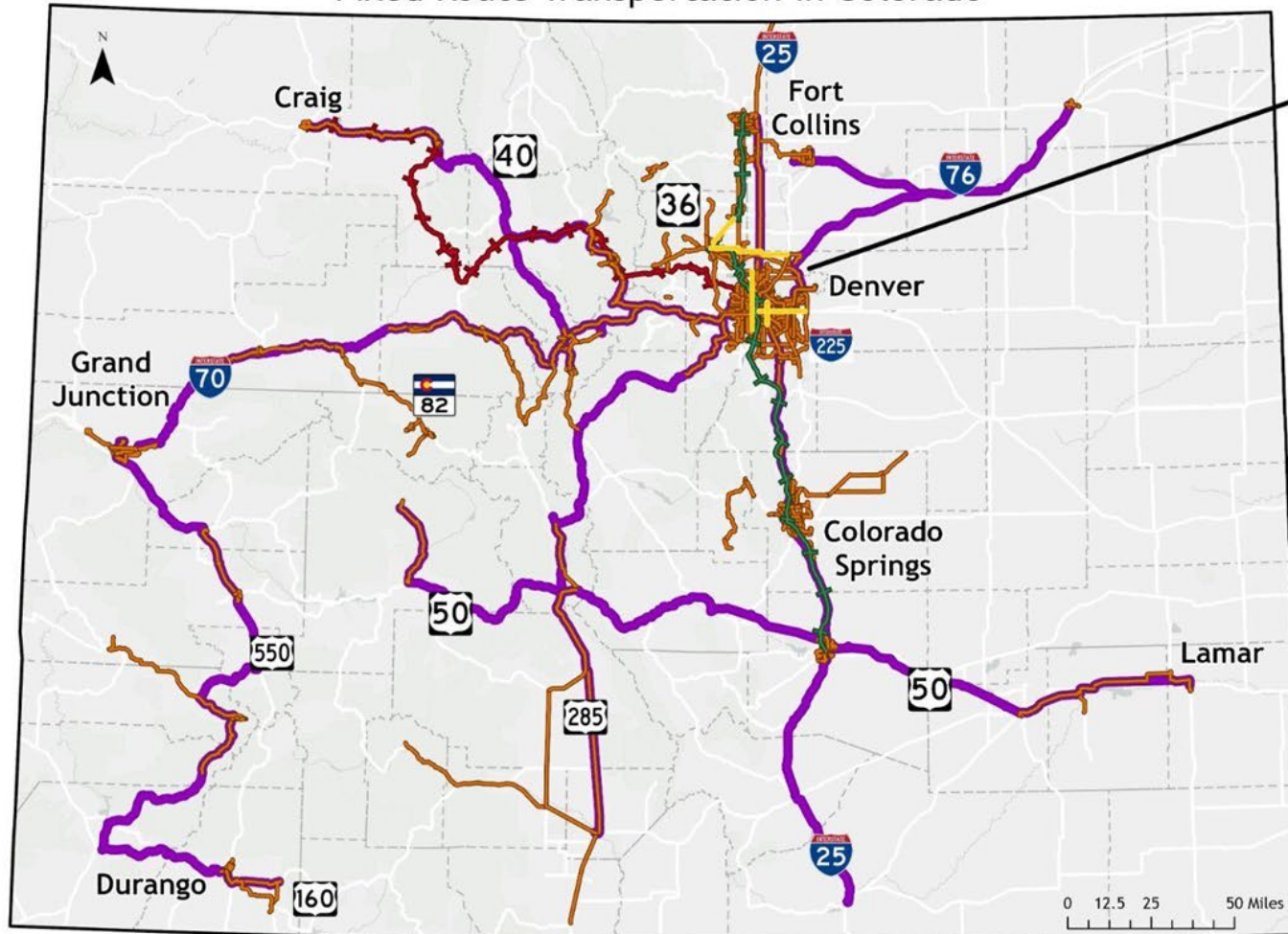




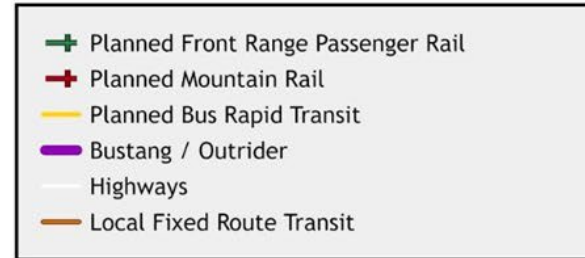
State Supported Services



Public Transportation Snapshot: Fixed Route Transportation in Colorado



Location: Denver Metropolitan Area





Major Study Elements

Drafted

Current State of Transit

- Snapshot in time of transit services
- CDOT bus and rail, major transit partners, and inter-regional providers
- Current State of Transit Report

Continuous

Outreach

- Gather agency planning information for gap analysis
- Review gap analysis with key partners and interest groups
- Outreach to intercity, regional, and key local transit providers

Underway

Gap Analysis

- Gap identification and interconnection between services
- Bustang service optimization and integration into state transportation network
- Financial forecast to maintain and extend state services

Upcoming

Recommendations

- Transit Priorities Framework and Final Report
- Transit Connections Story Map
- Bustang Services Expansion



Thank You

Contact Information:

George.Gromke@state.co.us

Submit comments & Questions online at
<https://www.codot.gov/programs/transitan-drail/transit-connection-study>

THANK YOU