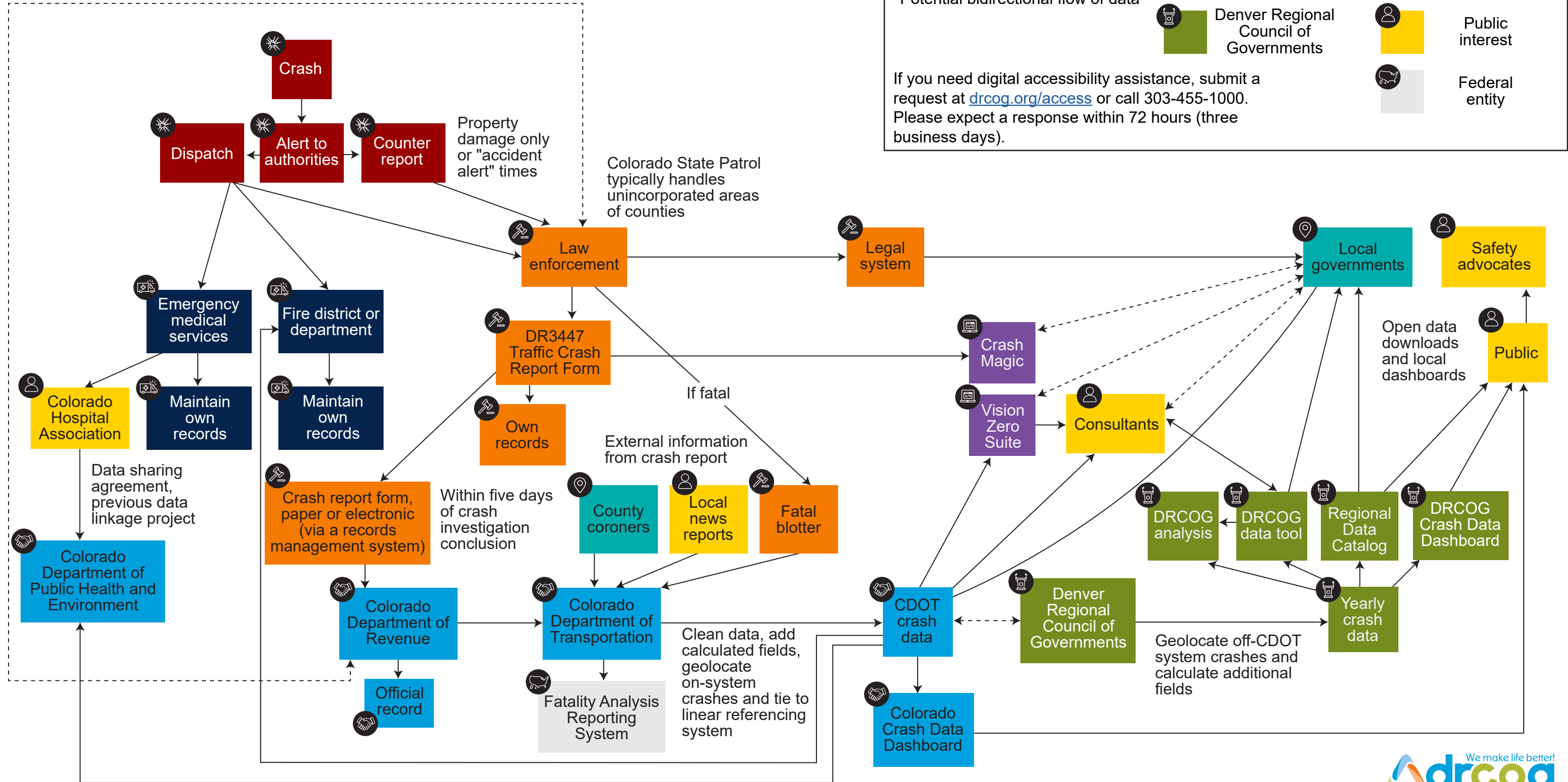


Crash data collection, processing and analysis model

Non-exhaustive representation of the many interconnections and possible flows of crash data, as described by Crash Data Consortium stakeholders.

Incomplete reports sent back to law enforcement for completion; amended reports returned to Department of Revenue



Legend

- Crash aftermath
- Criminal justice
- Other first responders
- Denver Regional Council of Governments
- State entities
- Local entities
- Crash data software
- Public interest
- Federal entity

Single directional flow of data
 Potential bidirectional flow of data

If you need digital accessibility assistance, submit a request at drcog.org/access or call 303-455-1000. Please expect a response within 72 hours (three business days).