

**Via Appia Lane Repurposing
Optional Attachments**

Preliminary Improvements

Project 1: Corridor Improvements, Cont.

CP4: Via Appia Improvements

Summary

Via Appia is a collector that connects many neighborhoods to South Boulder Road, McCaslin Boulevard, as well as the Recreation Center, parks, and trails. Via Appia is a wide street, particularly at intersections where there are center and right turn lanes. Data shows many cars traveling well over the posted speed limit. Because the corridor primarily serves as a connection to local neighborhoods and includes several trail connections and transit stops, improving safety at crossings along this corridor is recommended. This project includes a series of improvements along the roadway and at key intersections to improve safety and promote multi-modal use of the corridor.

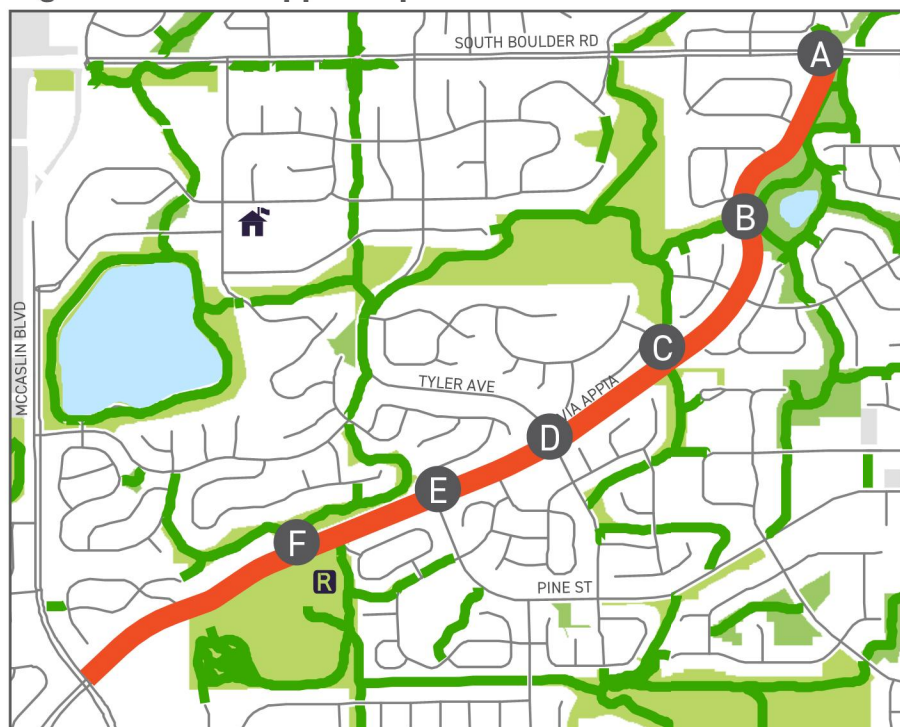
Implementation

The City could construct the recommended improvements as one project, or at individual locations over time as determined by budget and prioritization. When the corridor is complete, the improvements should be consistent to provide predictability for users along the corridor.

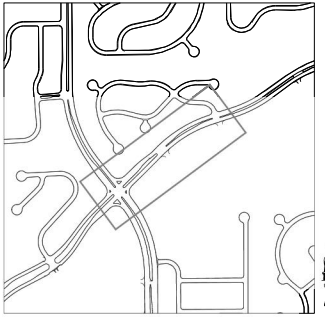
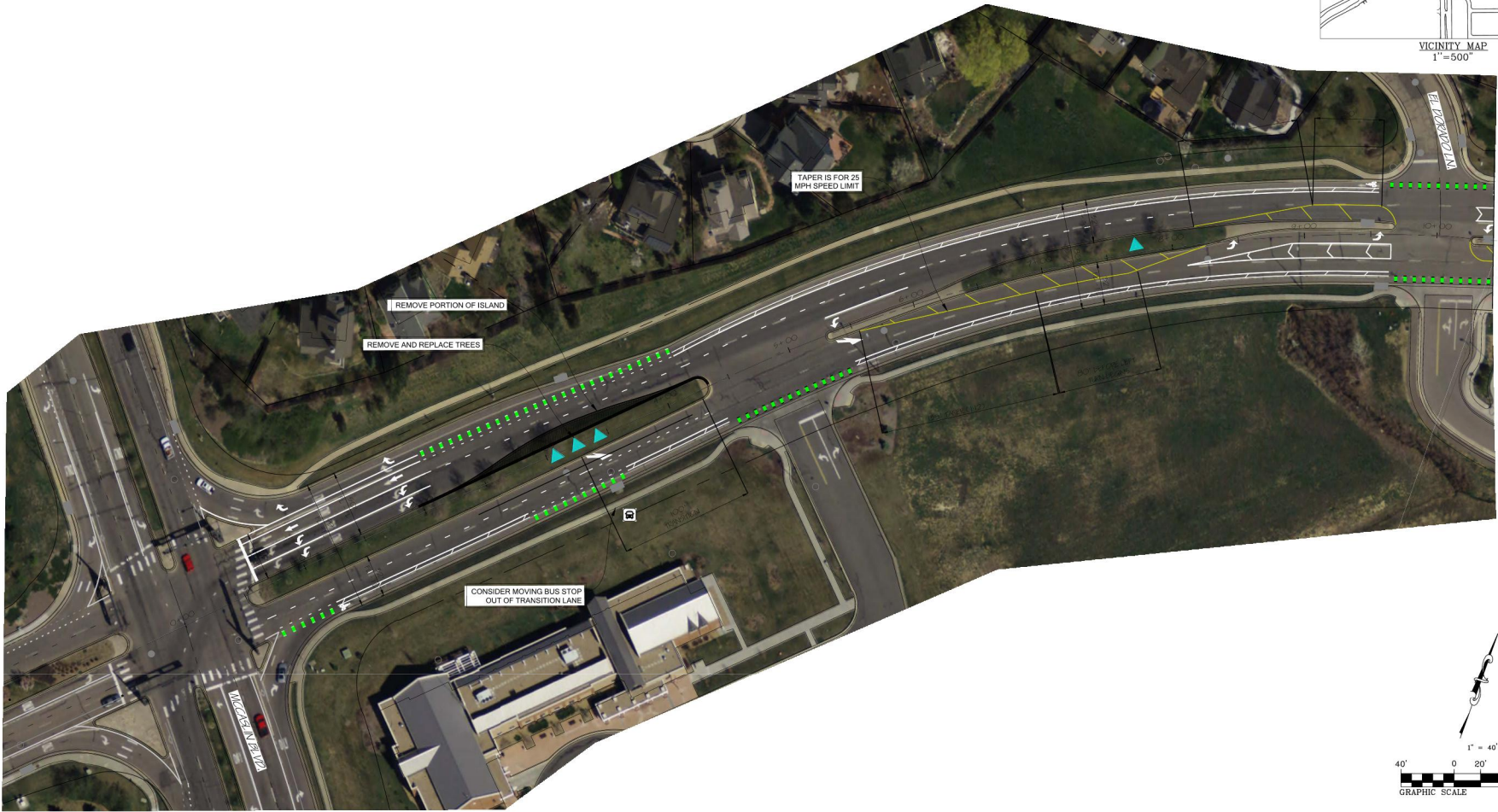
Key Considerations

- Right-turn lanes are not needed for vehicular traffic and can be removed to shorten pedestrian crossing distances.
- Road width would allow for incorporation of pedestrian refuges in the median and additional pavement space for bicycle lanes.
- Pine Street and Via Appia intersection has poor visibility due to both elevation change and curvature of the roadway and should be a priority.

Figure 4.12 Via Appia Improvements



- A** Underpass at South Boulder Road connecting to existing trails.
- B** Provide advanced signage to address poor visibility at trail crossing.
- C** Additional crosswalk markings, remove turn lane, evaluate for RRFB at Sagebrush Way.
- D** Remove turn lanes, evaluate for RRFB at Tyler Ave.
- E** Remove turn lanes, evaluate for RRFB at Pine St.
- F** Additional advanced signage and add pedestrian signal at Powerline Trail.



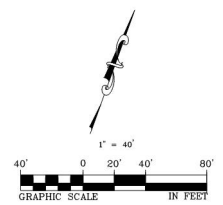
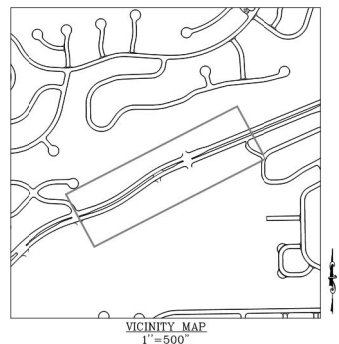
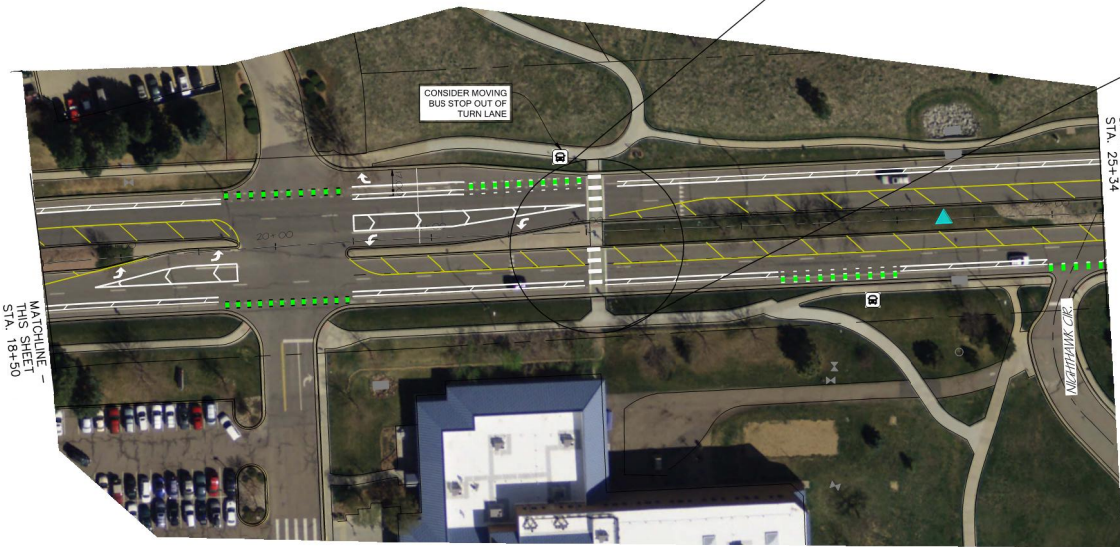
VICINITY MAP
1" = 500'

MATCHLINE -
SHEET 2
STA. 10+42

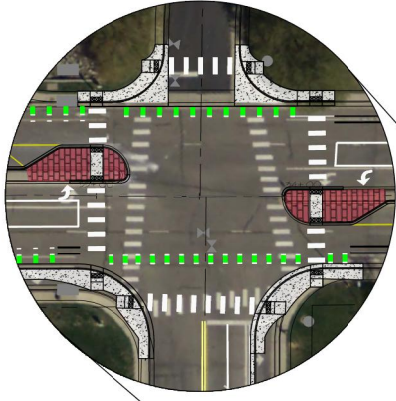
DESIGN BY: AF
DRAWN BY: AF
CHECKED BY:
APPROVED BY:
ISSUE DATE: 12/1/2021
REVISIONS:

VIA APPIA (STA. 0+00 TO STA. 10+42)
SEGEMENT 1: MCCASLIN BLVD. TO EL DORADO LN.

SHEET
1
OF
9



DESIGN BY: AF
DRAWN BY: AF
CHECKED BY:
APPROVED BY:
ISSUE DATE: 12/1/2021
REVISIONS:



1" = 30'
OPTION C

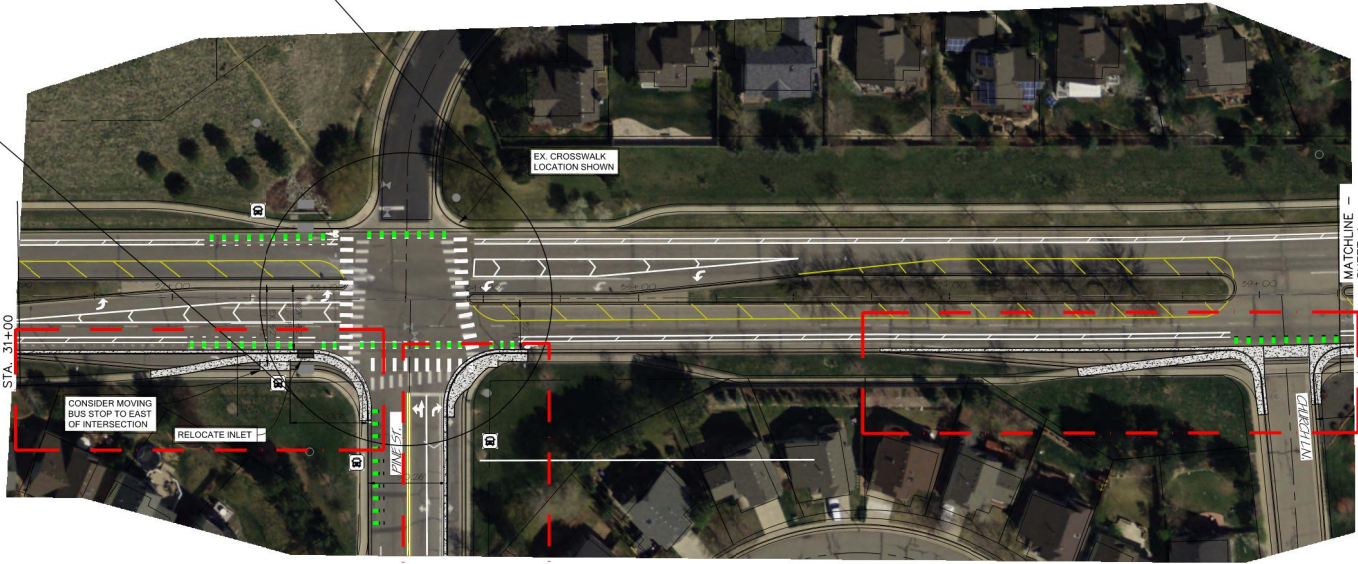


MATCHLINE -
SHEET 2
STA. 25+34

MATCHLINE -
THIS SHEET
STA. 31+00



VICINITY MAP
1" = 500'



MATCHLINE -
THIS SHEET
STA. 31+00

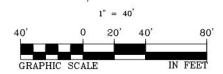
CONSIDER MOVING
BUS STOP TO EAST
OF INTERSECTION

RELOCATE INLET

EX. CROSSWALK
LOCATION SHOWN

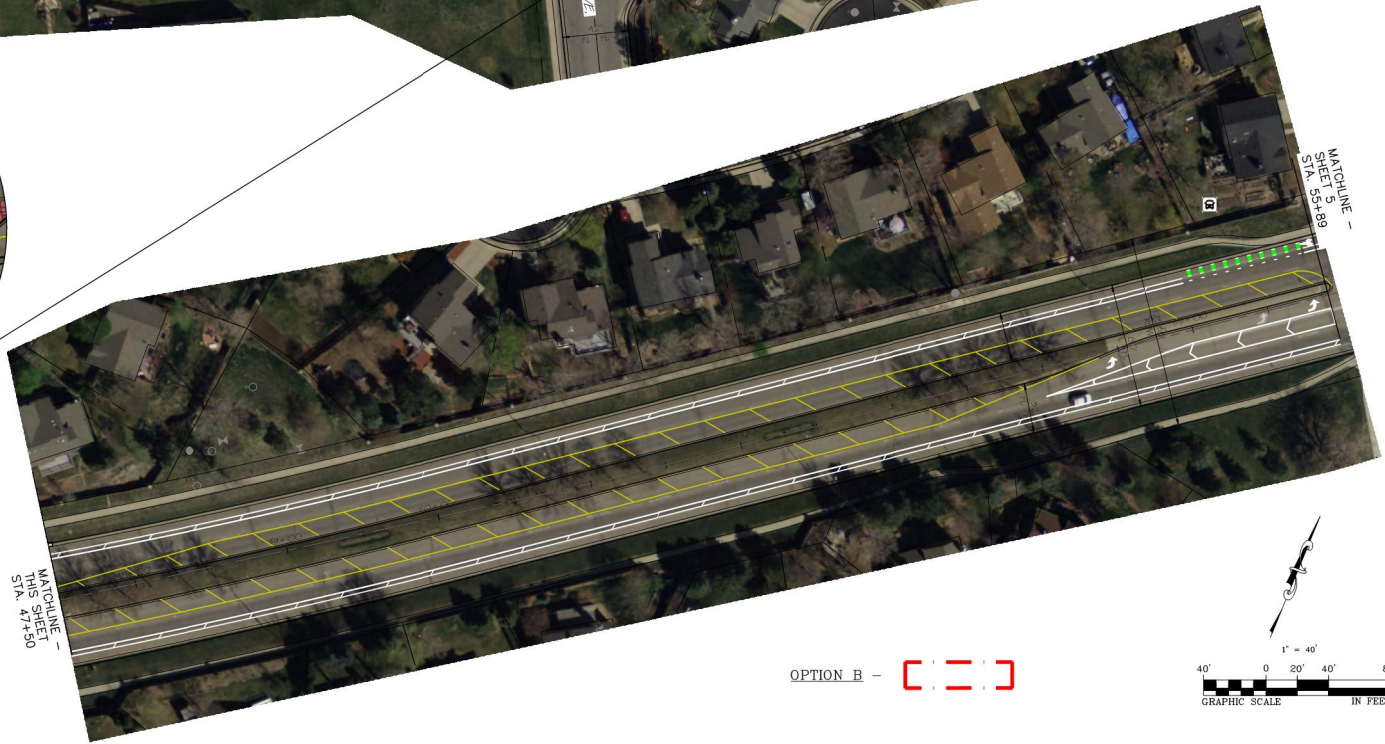
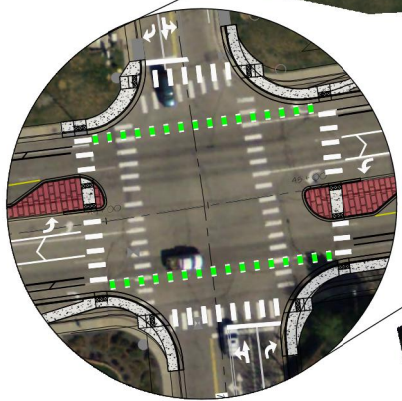
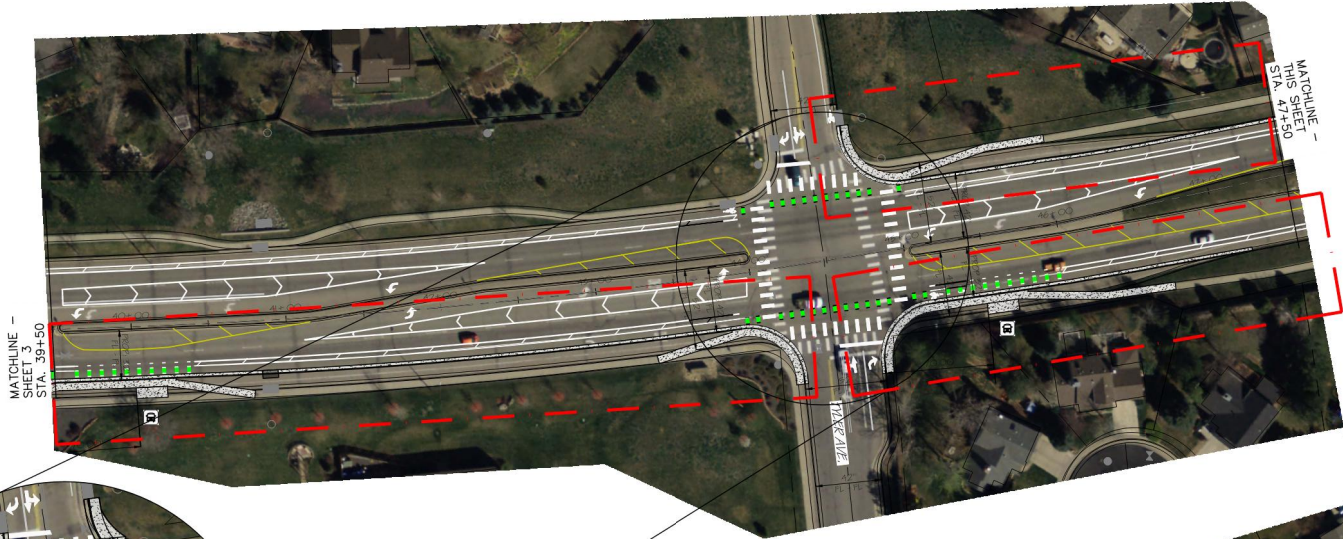
MATCHLINE -
SHEET 4
STA. 39+50

OPTION B - [Red dashed box]

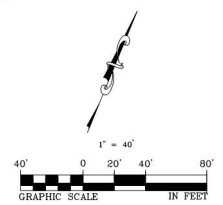


DESIGN BY: AF
DRAWN BY: AF
CHECKED BY:
APPROVED BY:
ISSUE DATE: 12/1/2021
REVISIONS:

G:\CIPS\CIPS_2022\2022 CONCRETE REPLACEMENT PROGRAM\DRAWINGS\DRAFTS\BASE SHEETS VIA APPIA\14.DWG



OPTION B - [Red dashed box]



DESIGN BY: AF
 DRAWN BY: AF
 CHECKED BY:
 APPROVED BY:
 ISSUE DATE: 12/1/2021
 REVISIONS:

City of Louisville
 COLORADO - SINCE 1878

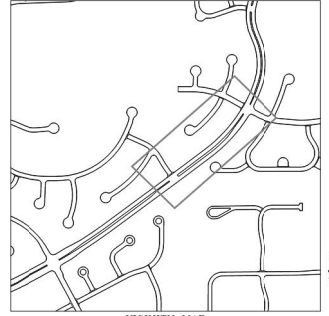
VIA APPIA (STA. 39+50 TO STA. 55+89)
 SEGMENT 2: CHURCH LN. TO SAGEBRUSH DR.

SHEET
 4
 OF
 9

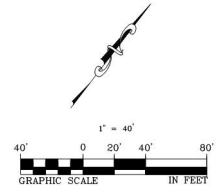
DESIGN BY: AF
DRAWN BY: AF
CHECKED BY:
APPROVED BY:
ISSUE DATE: 12/1/2021
REVISIONS:

VIA APPIA (STA. 55+89 TO STA. 65+06)
 SEGMENT 2: SAGEBRUSH WY. TO LAFAYETTE ST.

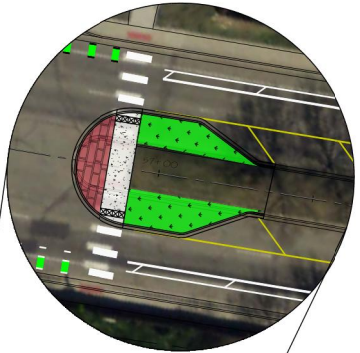
SHEET
 5
 OF
 9



VICINITY MAP
 1" = 500'

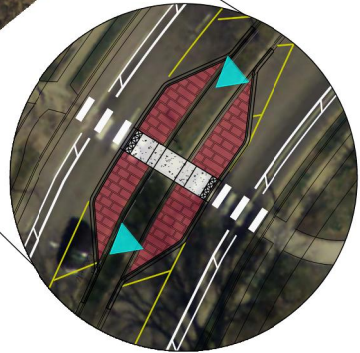


1" = 20'
 OPTION C

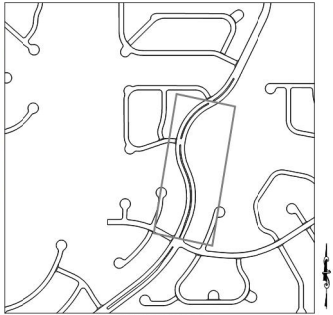


1" = 50'
 OPTION C

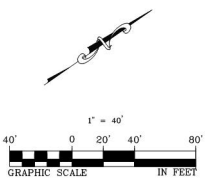




1" = 20'
OPTION C



VICINITY MAP
1" = 500'



DESIGN BY: AF
DRAWN BY: AF
CHECKED BY:
APPROVED BY:
ISSUE DATE: 12/1/2021
REVISIONS:

VIA APPIA (STA. 65+06 TO STA. 76+81)
SEGMENT 3: LAFAYETTE ST. TO HARPER ST.

G:\CIPS\CIPS_2022\2022 CONCRETE REPLACEMENT PROGRAM\DRAWINGS\DRAFTS\BASE SHEETS VIA APPIA\2- ONE LANE VIA APPIA.DWG

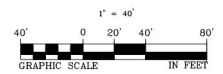
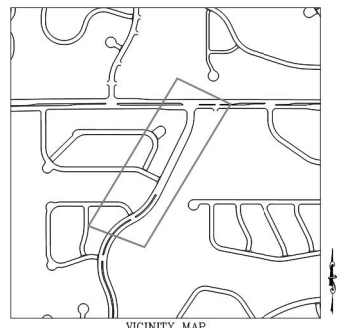
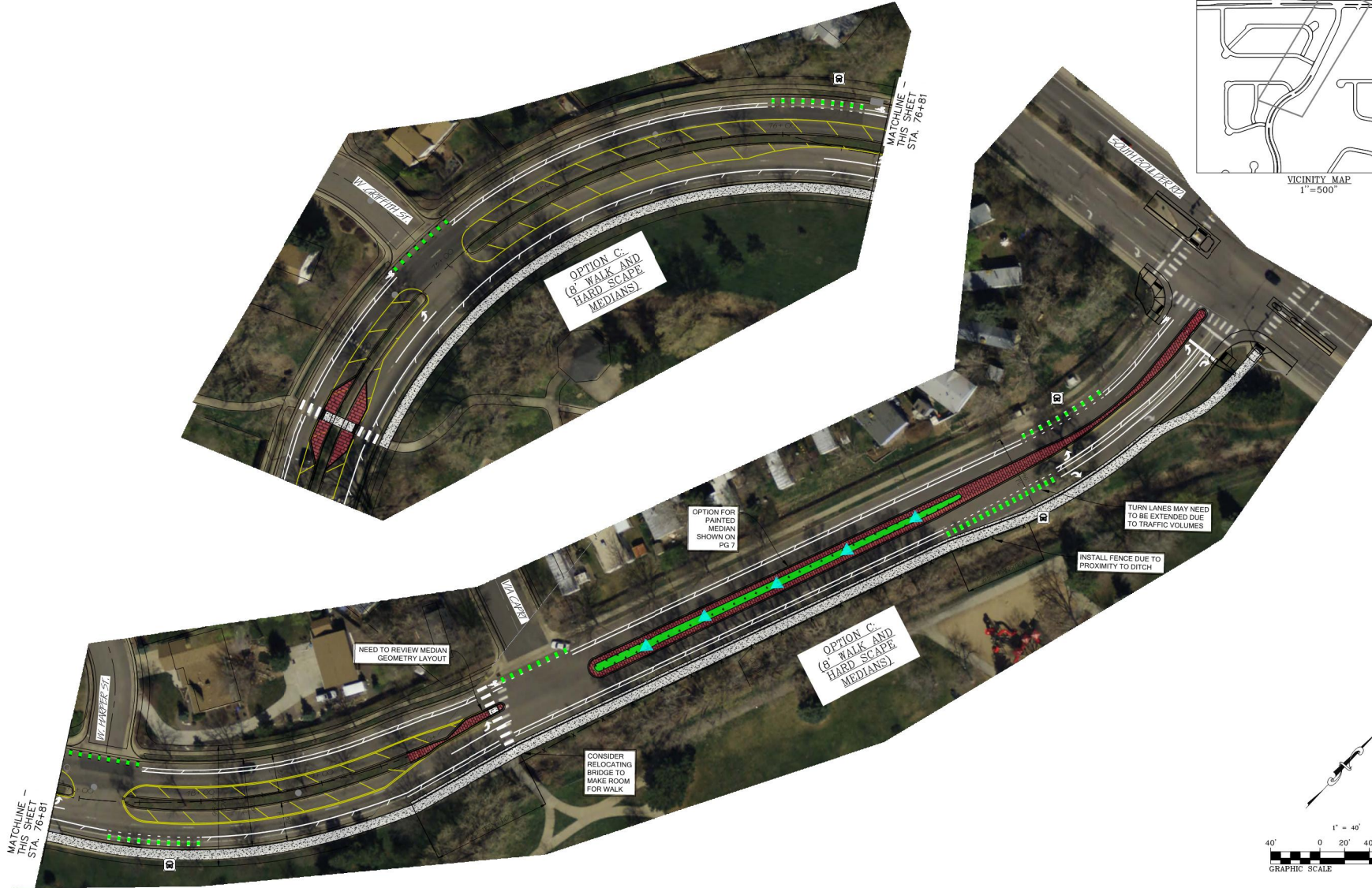


City of
Louisville
COLORADO - SINCE 1878

DESIGN BY: AF
DRAWN BY: AF
CHECKED BY:
APPROVED BY:
ISSUE DATE: 12/1/2021
REVISIONS:

OPTION B: VIA APPIA (STA. 76+81 TO STA. 87+72)
SEGMENT 3: HARPER ST. TO SOUTH BOULDER RD.

SHEET
7
OF
9



City of Louisville
COLORADO - SINCE 1878

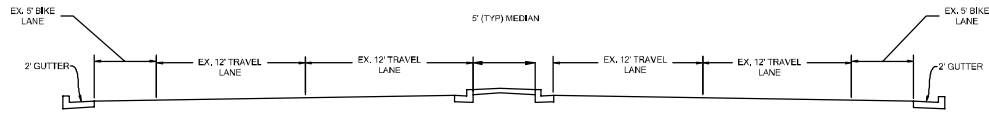
DESIGN BY: AF
DRAWN BY: AF
CHECKED BY:
APPROVED BY:
ISSUE DATE: 12/1/2021
REVISIONS:

OPTION C: VIA APPIA (STA. 71+00 TO STA. 87+72)
SEGMENT 3: TRAIL X-ING TO SOUTH BOULDER RD.

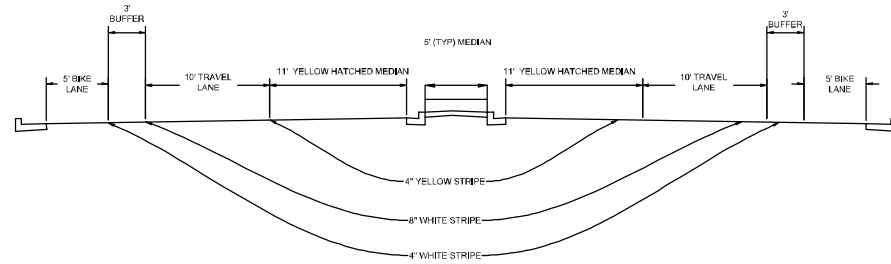
SHEET
8
OF
9

DESIGN BY: AP
DRAWN BY: AP
CHECKED BY:
APPROVED BY:
DATE: 12/1/2022
REVISIONS:

EX. STRIPING PLAN



PROPOSED: (ONE LANE TYP.)



PROPOSED:
(ADD LEFT TURN LANE NE OF SAGEBRUSH)

