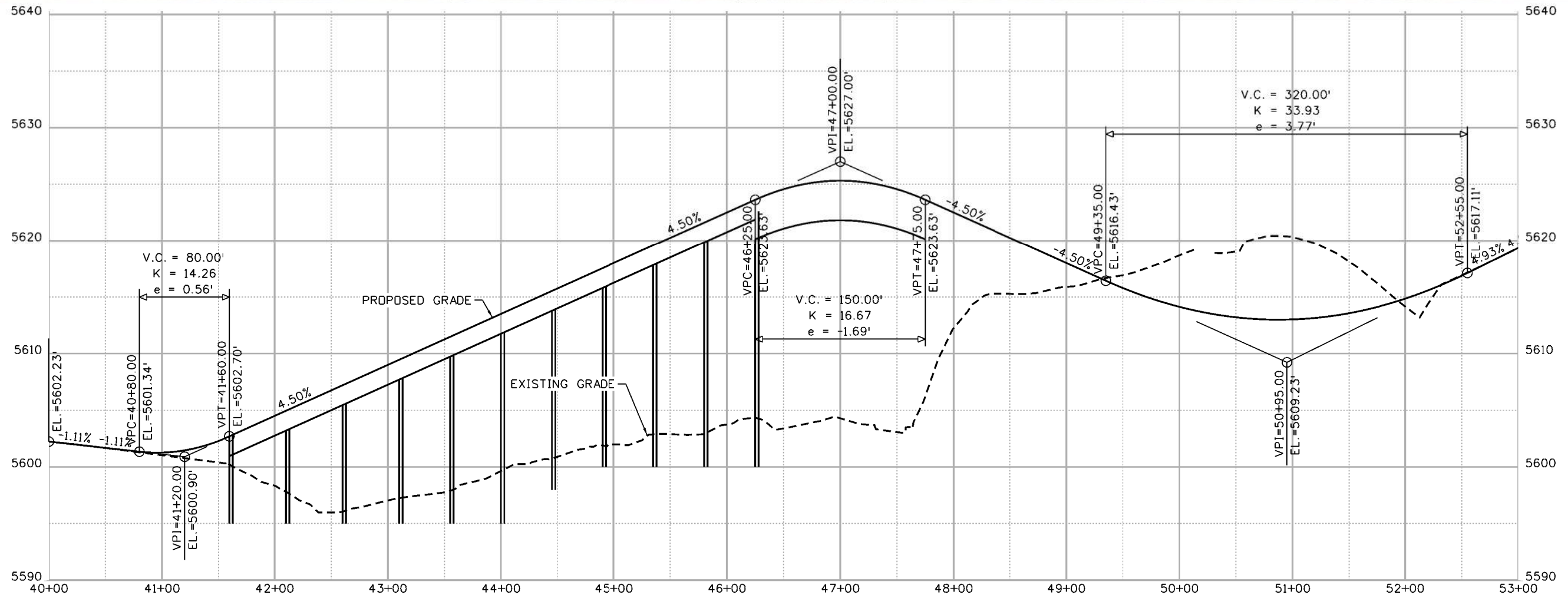
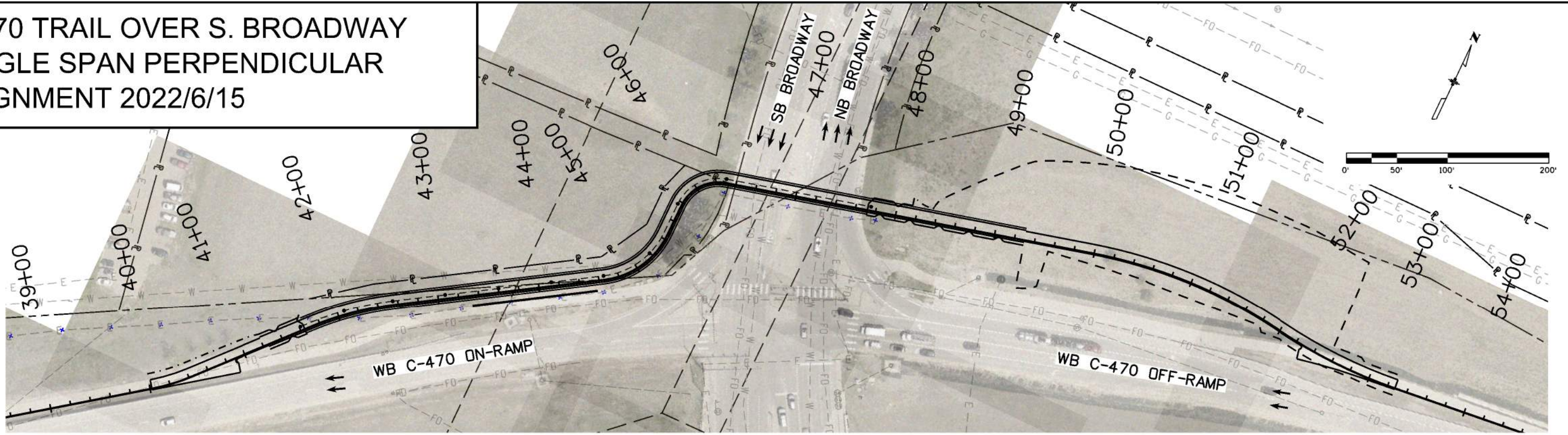
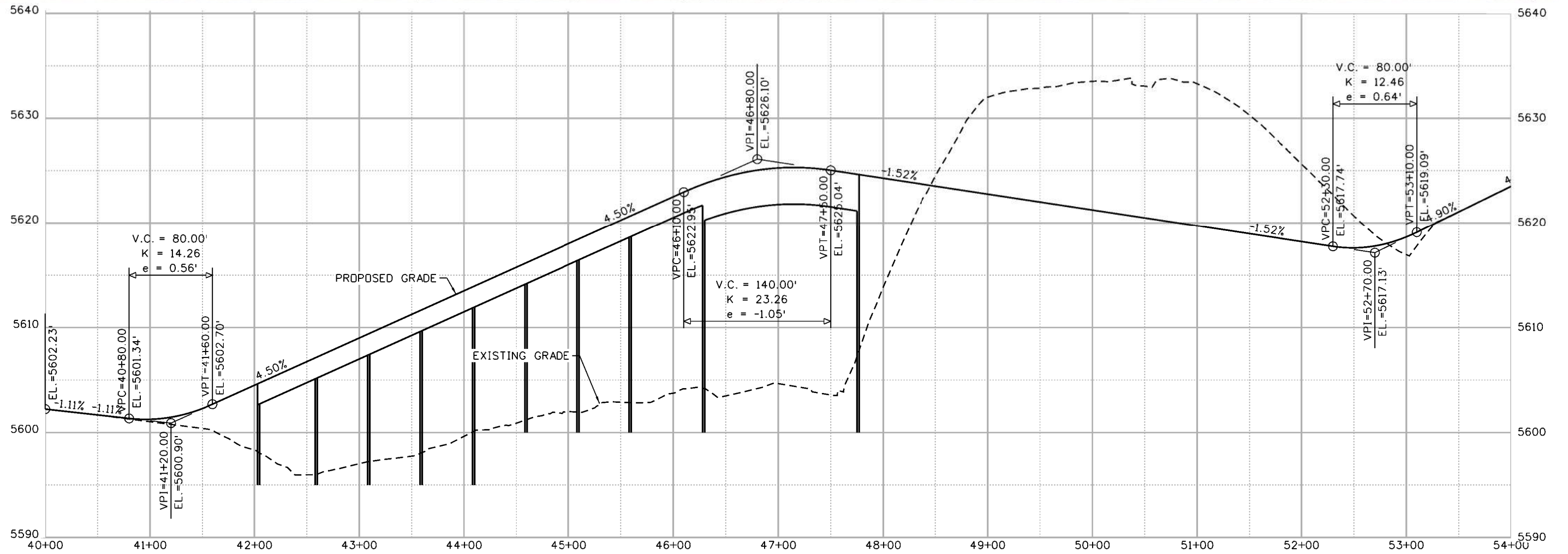
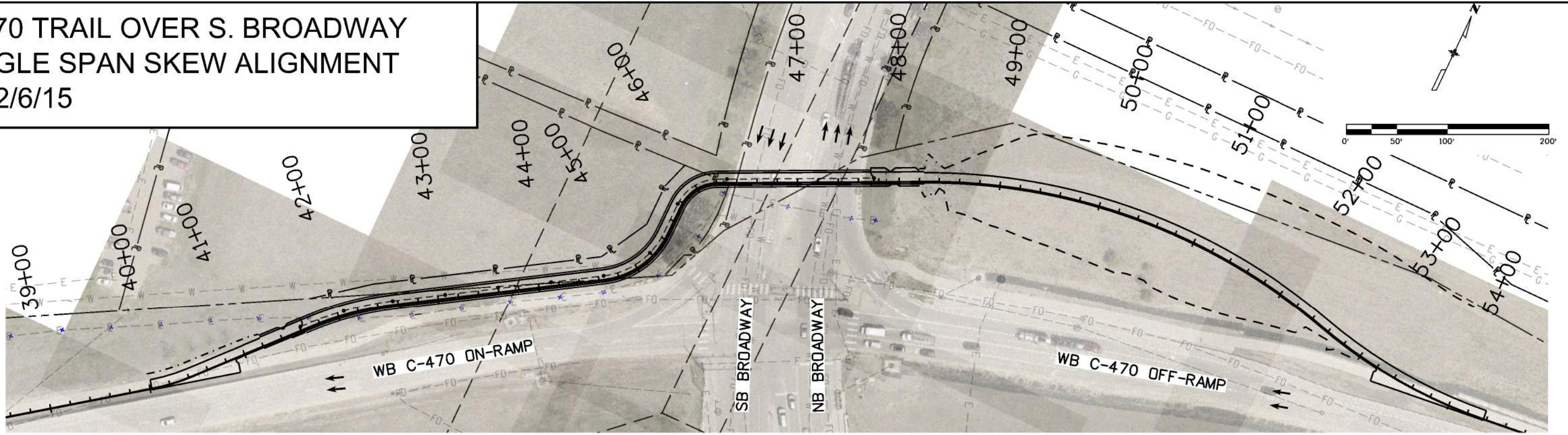


**C-470 TRAIL OVER S. BROADWAY
SINGLE SPAN PERPENDICULAR
ALIGNMENT 2022/6/15**



- NOTES**
1. -8100 CY NET CUT
 2. WALL NEEDED TO PROTECT INLET AND DRAINAGE ON EAST SIDE
 3. -.025 ACRE ROW TAKE AS SHOWN

**C-470 TRAIL OVER S. BROADWAY
SINGLE SPAN SKEW ALIGNMENT
2022/6/15**



- NOTES**
1. -15300 CY NET CUT
 2. NO WALL NEEDED TO PROTECT INLET AND DRAINAGE ON EAST SIDE
 3. -.025 ACRE ROW TAKE AS SHOWN