

Airport Creek Trail Underpass - City & County of Broomfield - Supplemental Attachment

Alternative 1 – North Crossing

Description

Alternative 1 consists of approximately 830 feet of trail connecting the newly constructed Wadsworth Station residential development on the west side of the BNSF railroad tracks to the existing trail at the Broomfield Industrial Park Sports Complex on the east side of the tracks. The Wadsworth Station development was constructed with a pedestrian connection in anticipation of this trail connection. An overview of this alternative is presented below, while an exhibit showing this alternative in detail is included as an attachment to this report.

Figure 5: Alternative 1 Overview

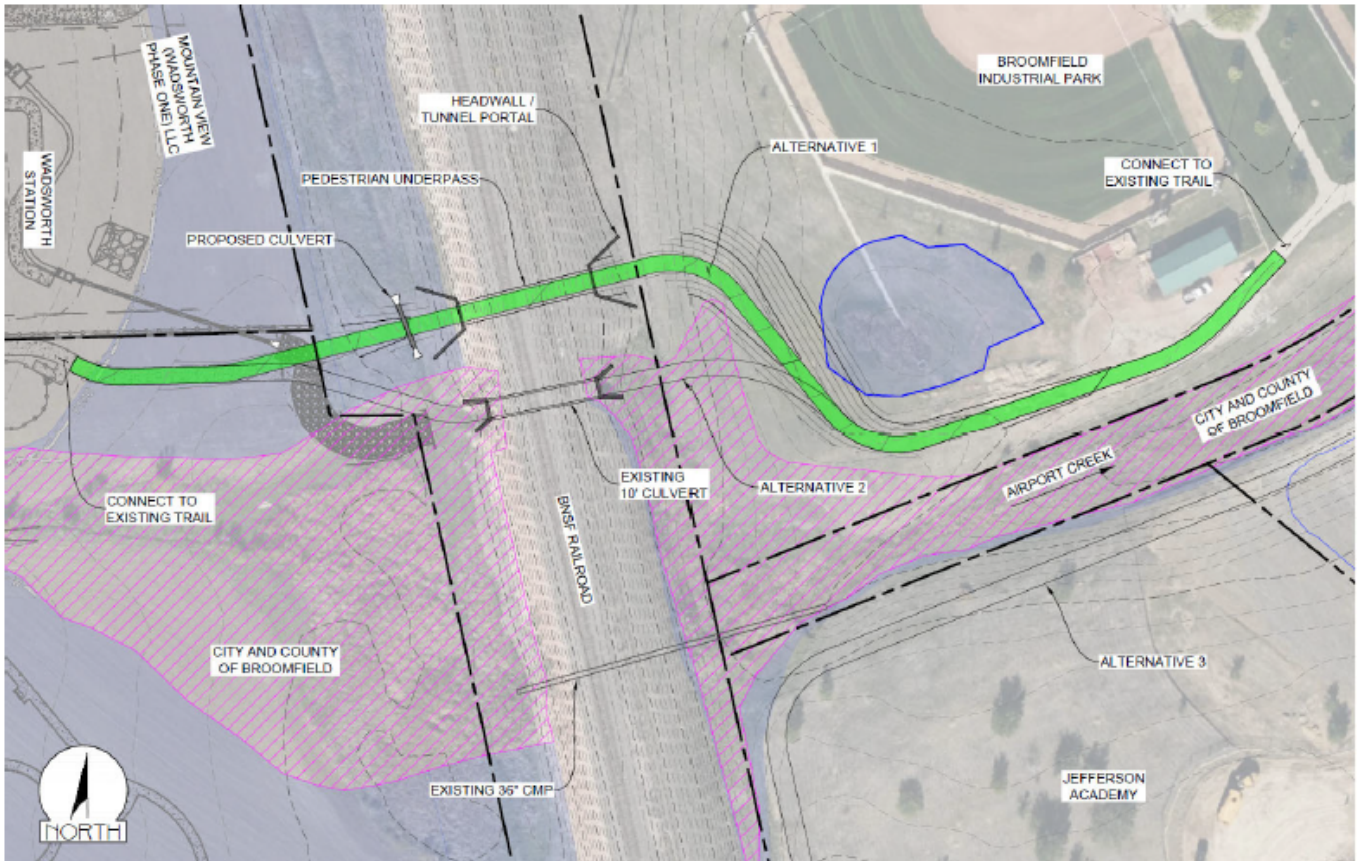


Figure 3: Typical Trail Section

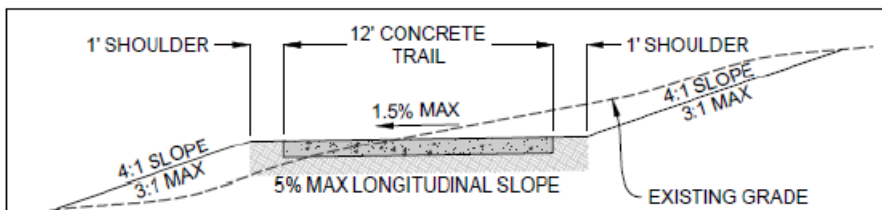


Figure 4: Typical Tunnel & Trail Section

