

ULI CO | DRCOG PARTNERSHIP

PUBLIC SECTOR ENGAGEMENT STRATEGY

January 7, 2026



WHERE THE FUTURE IS BUILT

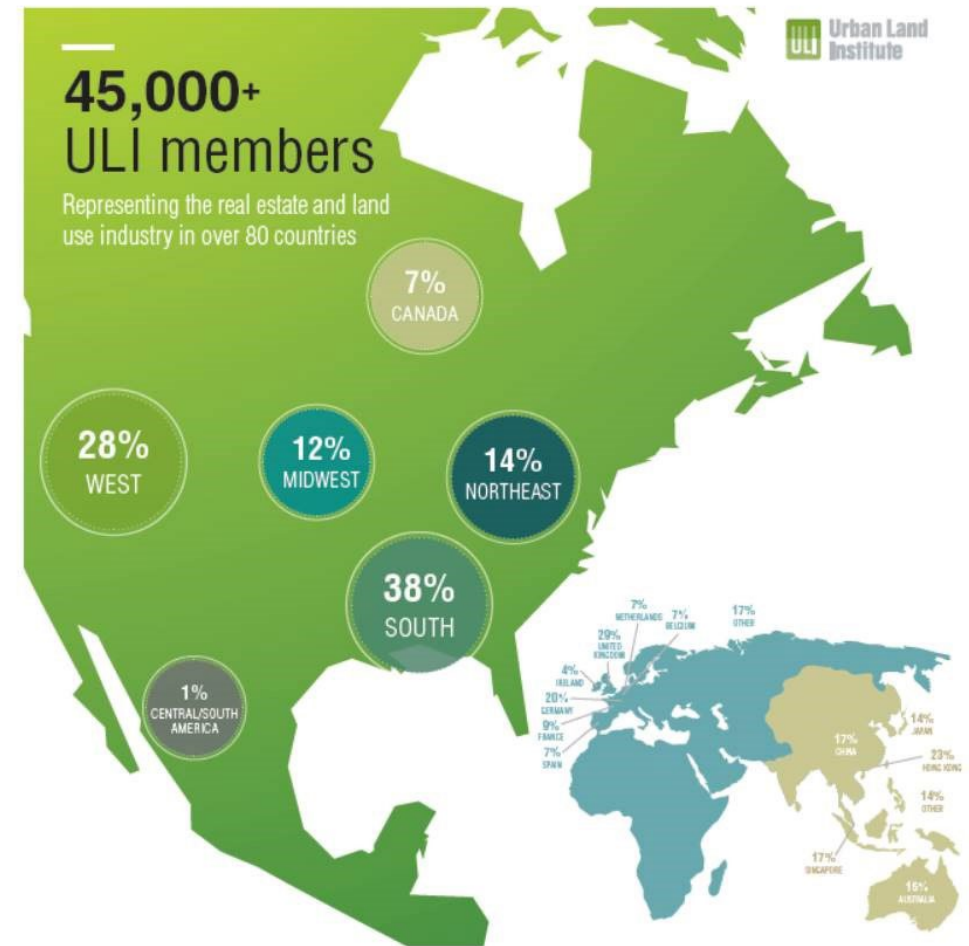
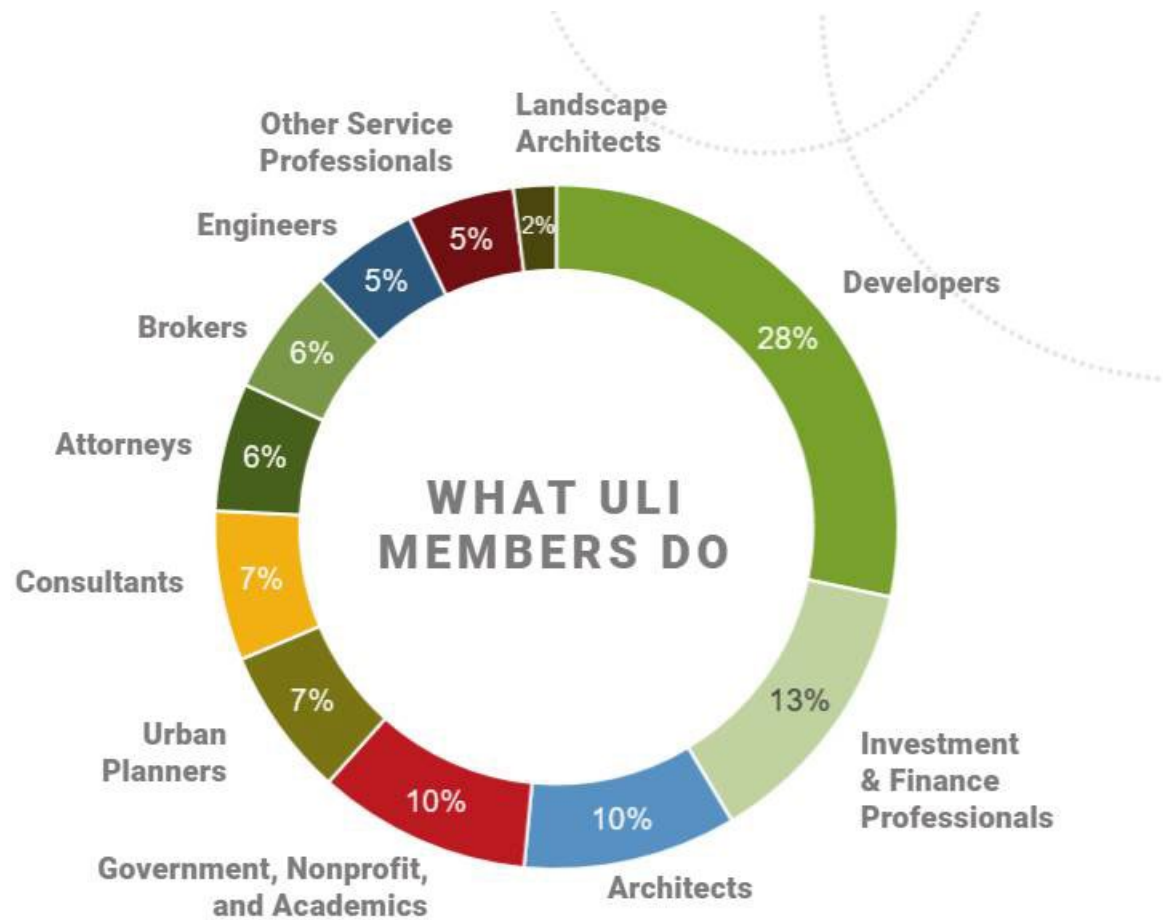
ULI MISSION PRIORITIES

Accelerate - DECARBONIZATION and NET ZERO

Increase - HOUSING ATTAINABILITY

Educate - THE NEXT GENERATION OF DIVERSE LEADERS

ULI GLOBAL MEMBERSHIP





ABOUT ULI COLORADO

The ULI Colorado District Council was formed in 1998, as a direct response to the need for educational forums at a local level.

ULI Colorado has been a statewide convener for dialog among industry leaders, providing an unbiased and non-partisan exchange of ideas relevant to Colorado's urban centers, front range, and mountain communities.



Greater Denver Region

Members located in Denver and nearby cities such as Arvada, Englewood, Glendale, Edgewater, Wheat Ridge, Greenwood Village, Centennial, Littleton, and more.

Northern Colorado Region

Members located in Fort Collins, and northern cities such as Loveland, Windsor, Greeley, and more.

Boulder Region

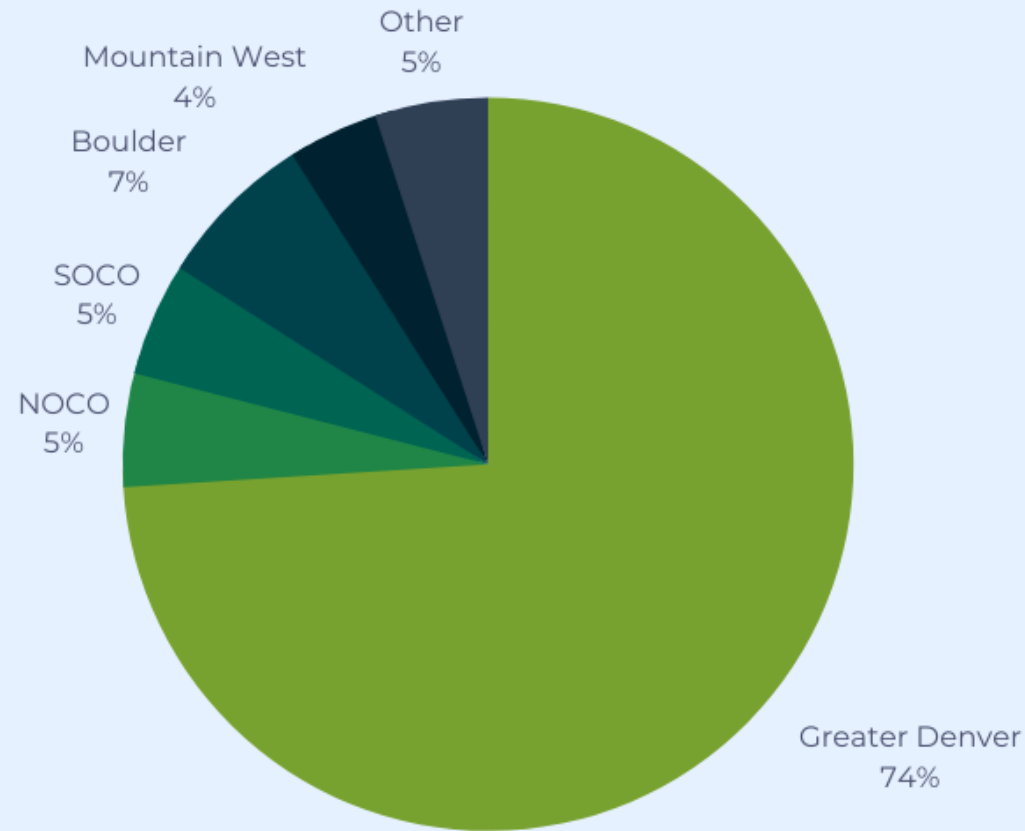
Members located in Boulder and nearby cities such as Broomfield, Superior, Louisville, and more.

Southern Colorado Region

Members located in Colorado Springs and southern cities such as Pueblo, Castle Rock, Castle Pines, and more.

Mountain/West Region

Members located in Vail, Frisco, Steamboat Springs, Breckenridge, Aspen, Grand Junction, and more.



COLORADO MEMBERSHIP

ULI Colorado has more than 1,300 members and has one of the highest member participation and member retention rates of any ULI District Council.

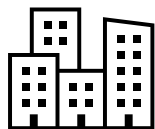
ULICO | Strategic Plan – Priorities and Key Initiatives



Housing Attainability



Impact of the Regulatory Environment



Downtown Revitalization



14ER

east west partners

SUMMIT



ALPINE



Downtown Denver Partnership



McWHINNEY



Xcel Energy®



MONTANE



Stantec



FOOTHILLS

- AEW Allen Matkins Amazon Avison Young Bain Capital Real Estate Bank of America Ballard Spahr Berkadia Brownstein Hyatt Farber Schreck Clifton Larson Allen Colliers
 Conscience Bay Continuum Costar Group Dig Studio Embrey Enterprise Community Development FitzGerald Gensler Gorman & Company Group 14 Engineering Hines
 HDR IMEG Corp. Jacobs J.P. Morgan Kaplan Kirsch Kephart Moss Adams Palisade Partners RBC Capital Markets RCLCO RDG Solar Landscape
 Southern Land Company Strae Advisory Services Taylor Kohrs Trammell Crow UDR Whiting-Turner Woodworks ZF Capital ZGF



ULI CO Advisory Services

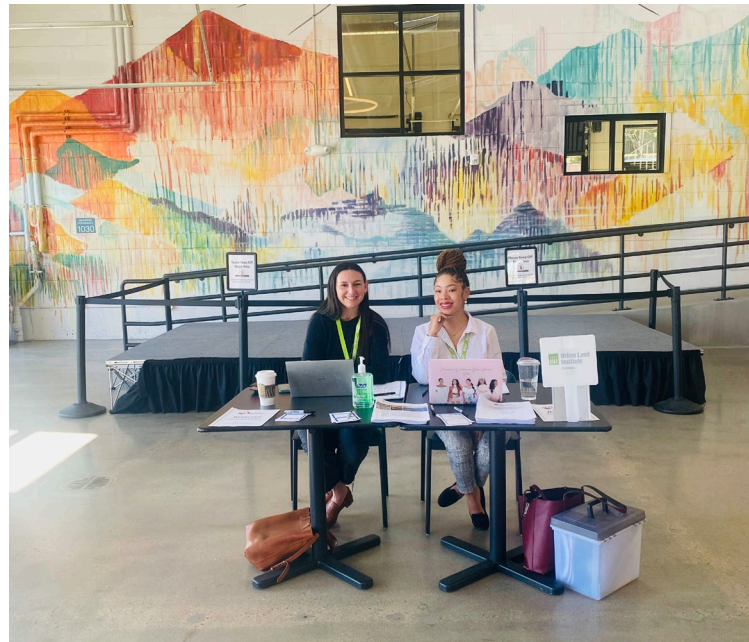


BUILDING FOR OUR COMMUNITIES


Technical Advisory Panels (TAPs), composed of qualified and unbiased ULI Colorado members who volunteer their time, bring relevant expertise directly into communities to address difficult real estate and land use challenges.

RECENT TAPS

- Steamboat Springs
- Speer Blvd.
- Boulder
- Brighton
- Superior/Louisville
- City of Edgewater



What is
UrbanPlan?

- 
- A group of diverse people are gathered around a table in a workshop setting. They are looking at various documents, including what appears to be a site plan or map. Some are pointing at the documents, while others are writing or looking thoughtful. The atmosphere is collaborative and focused.
- ▶ **UrbanPlan harnesses the power of experiential learning to drive participants to more deeply engage in the complex nature of land-use decisions and inspire them to take an active role as engaged citizens to create better and more equitable communities.**
 - ▶ **Participants make challenging development decisions, shaping the future of a fictional community. In the process, participants learn about private and public sector goals, complex trade-offs, and economics in play in redevelopment.**
 - ▶ **Through this interactive workshop, public officials gain a deeper understanding of their critical role in shaping a better community through the built environment.**



How does UrbanPlan work?

Teams develop a vision and build a model of proposal for Elmwood



Topic:
Flag/M
for

Enter decisions into Financial Model



A group of people, including students and an industry expert, are gathered around a table in a classroom or meeting room. The table is covered with a laptop and several colorful building blocks (LEGO-like) arranged on a printed document. The people are engaged in a discussion, with one man in a suit and tie gesturing with his hands. The background shows a green chalkboard and a map of the United States.

Industry experts visit teams for Facilitations I and II



Participants present to mock
City Council

The Table Has Turned!



	HIGH SCHOOL	UNIVERSITY	COMMUNITY
LENGTH	15 hour unit OR One-day workshops	15 hour unit OR One-day workshops	One-day workshops
AUDIENCE	Primarily Sophomores, Juniors, Seniors	Undergraduate, Graduate	Elected officials, community members, local gov. staff
EDUCATION or EXPERIENCE LEVEL	Economics, Government, Geography, career technology, and other courses	Architecture, Real Estate, Business, Planning, and other land use related fields	Various (since some are staff and others have other professions)

Q&A

Thank You!

**Rodney M. Milton, Jr.
Executive Director**

Rodney.Milton@uli.org