



Regional Multimodal Freight Plan Update

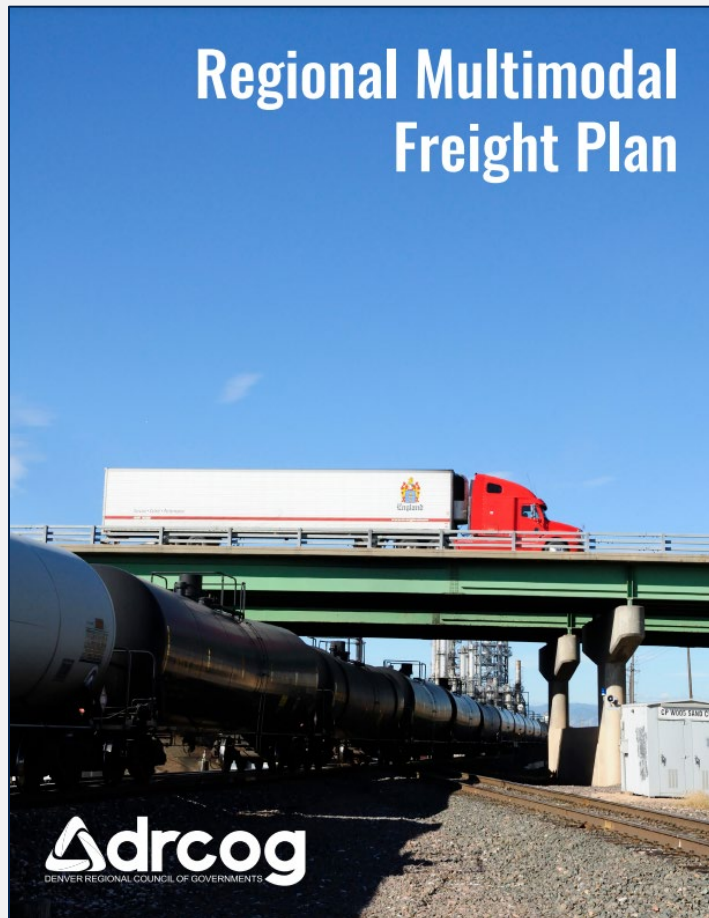
Board of Directors - May 21, 2025

Agenda

- Plan background and context.
- Project and plan goals.
- Plan components.
- 2025 plan update.



DRCOG Regional Multimodal Freight Plan



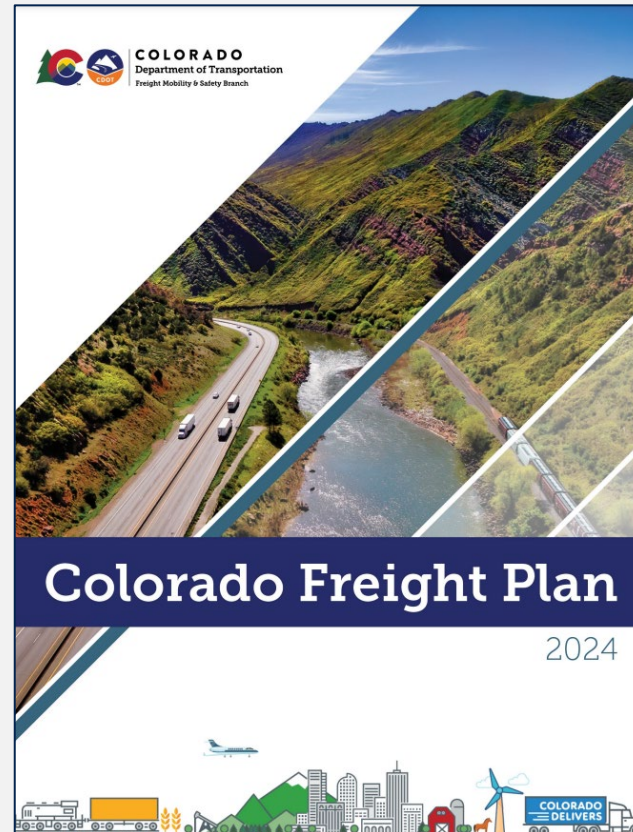
- Guides the region's **freight planning and infrastructure investments**.
- The first regional freight plan was completed by DRCOG in 2020.
- Includes analysis on highway, rail, air and pipeline movements.
- Aligns with DRCOG's **Metro Vision Regional Transportation Plan**.

Planning for freight movement

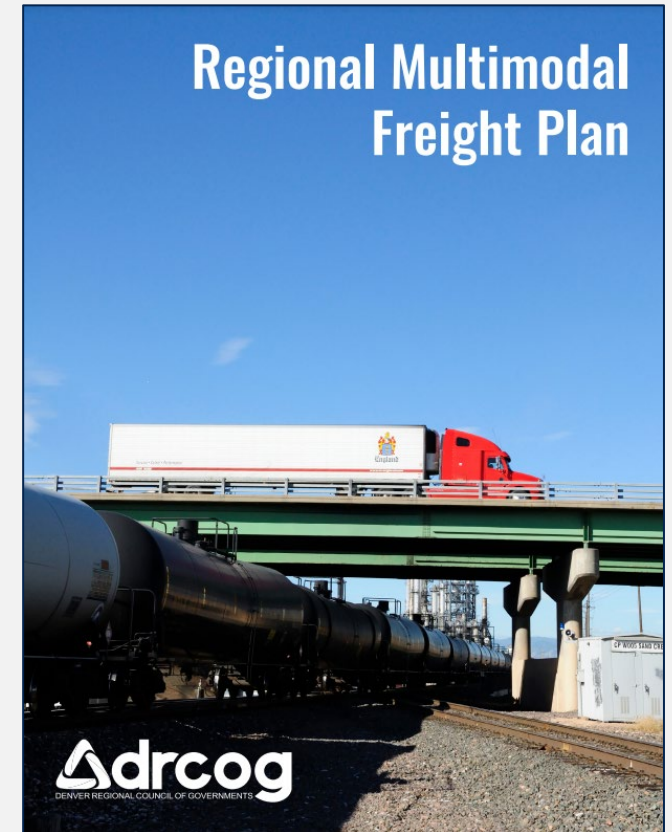
Federal Highway Administration (FHWA)



Colorado Statewide Freight Plan (CDOT)



Regional Multimodal Freight Plan (DRCOG)





Project goals

Freight planning goals

- **Engage** regional stakeholders and businesses.
- **Align** with Federal freight planning guidance.
- **Educate** stakeholders about freight and provide input into local planning efforts.
- **Position** DRCOG and member governments for funding opportunities.



Aligning with federal requirements

Federal requirements	DRCOG plan components	
<i>Maintain systematic freight data, performance measures, and modeling</i>	Intermediate collection, analysis, and modeling of freight-related data as needed	Existing plan component
<i>Coordinate with the private sector on freight and goods movement topics</i>	Membership on the CDOT Statewide Freight Advisory Council (FAC)	Existing plan component
<i>Maintain a project selection criteria that considers freight transportation impacts</i>	Plan criteria for freight bottleneck reduction and multimodal connectivity	New plan component
<i>Provide freight-related feedback on local Comprehensive Land Use Plans</i>	Creating evaluation criteria for evaluating local plans and access to major freight clusters	New plan component



Plan components

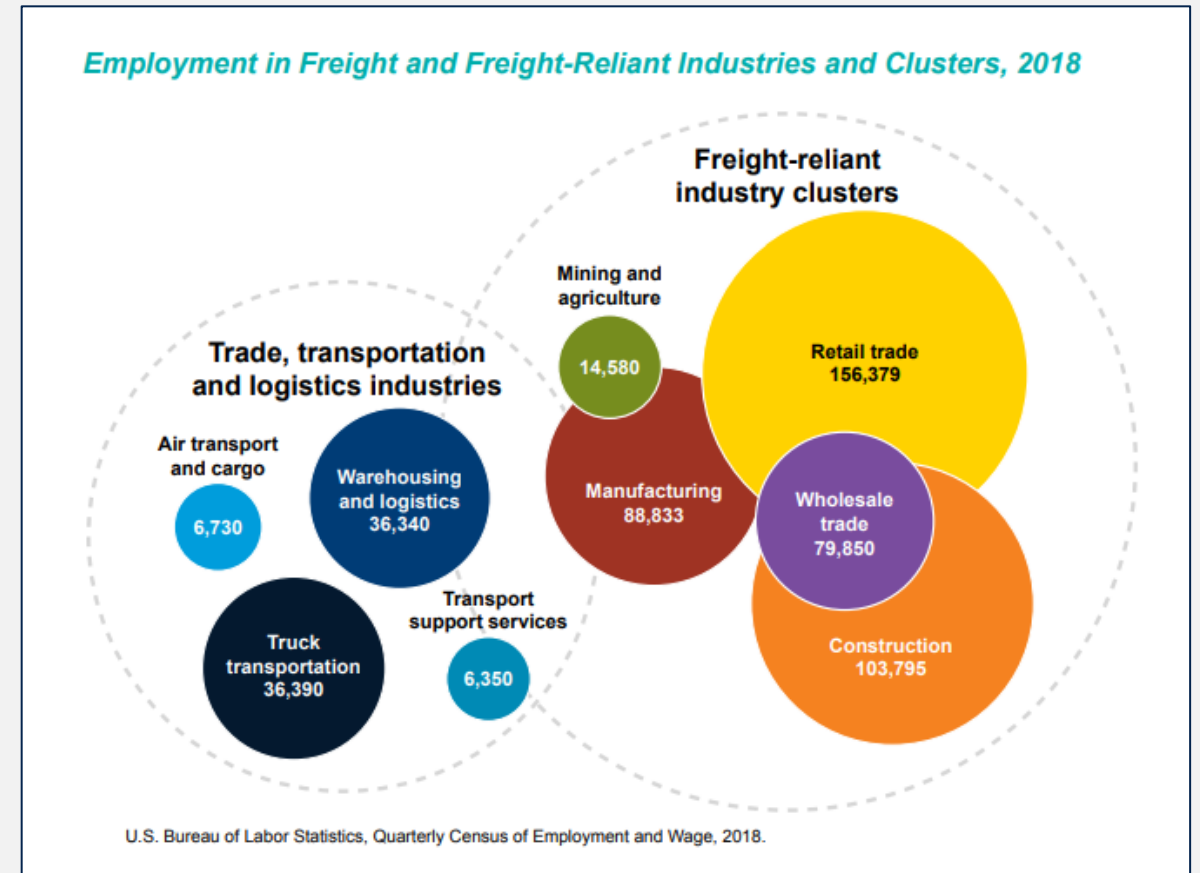
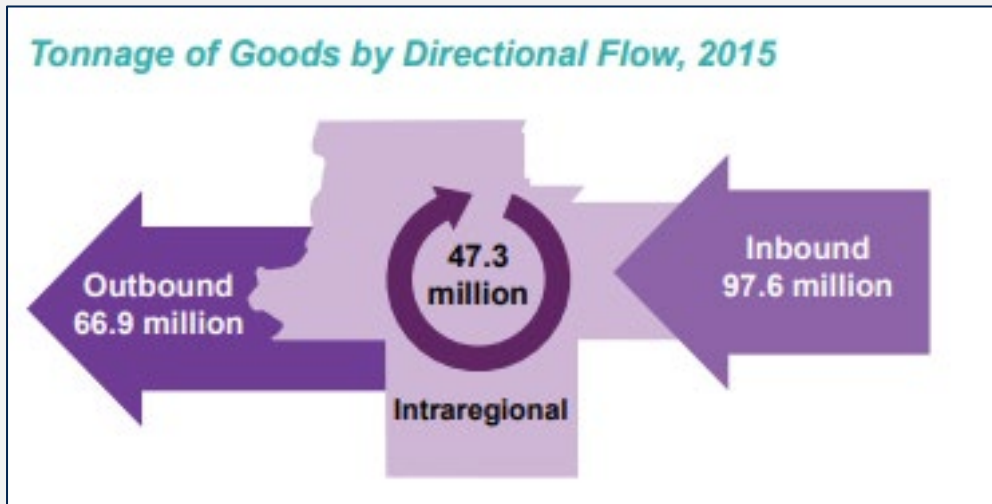


Freight planning activities

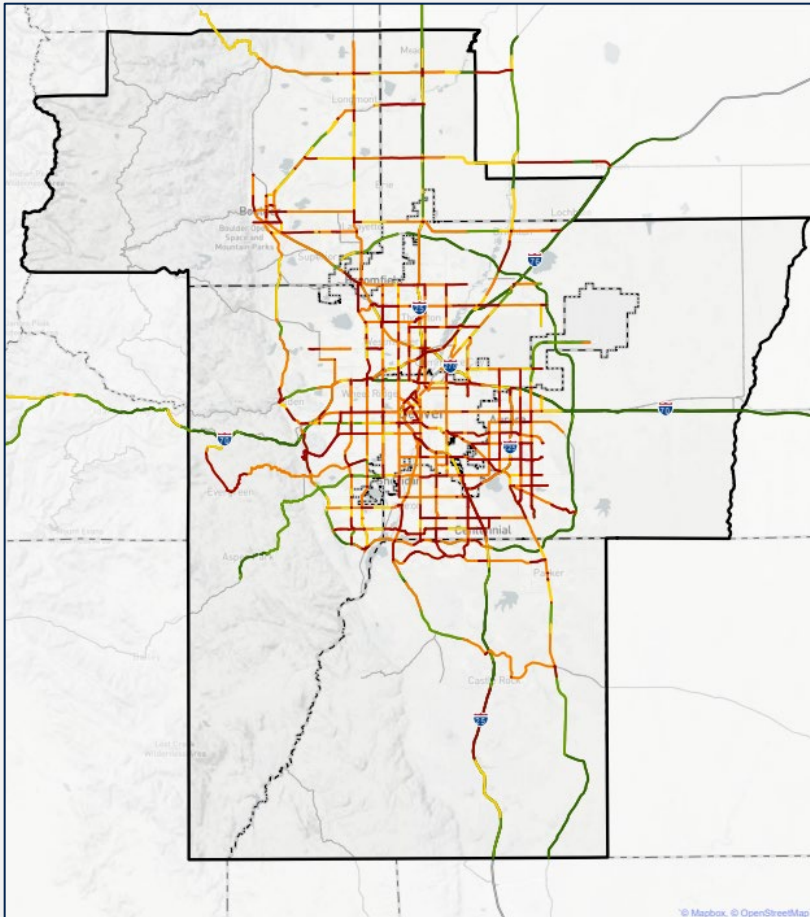
- 1) Collect **baseline information and data** for local plans.
- 2) Stakeholder **engagement** and coordination.
- 3) Inventory of **current needs and challenges**.
- 4) Documenting regional freight **trends and conditions**.
- 5) Identify a **regional freight priority network**.

Data collection

- Freight reliant **clusters and business generators**.
- **Value and tonnage** of goods moved throughout the region.



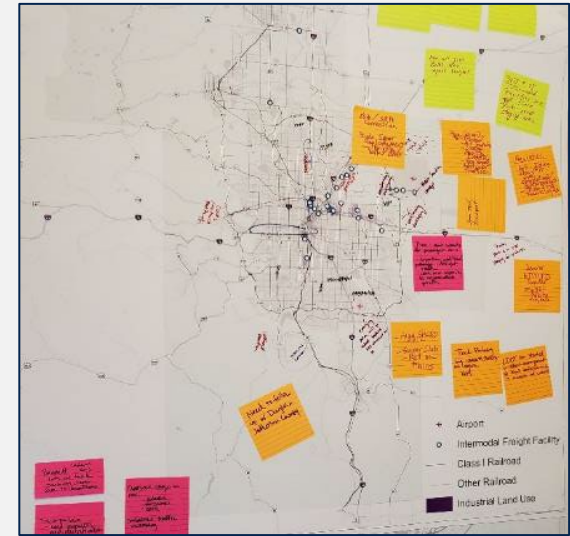
Assessing network needs and challenges



- Track vehicle **crashes** and identify truck-specific **safety hot spots**.
- **Truck parking** inventory and needs assessment.
- Identifying **at-grade crossing** locations.

Assessing network needs and challenges

- 1) Stakeholder engagement activities.
- 2) Public/private advisory committee.
- 3) Industry freight forums.
- 4) Survey research.
- 5) Coordination and outreach with other planning efforts.





Freight Plan Update

Updating the plan

Deliverable	Description	Action
Regional freight profile	Overview of the regional freight transportation system, description of major facilities by mode.	Existing plan update
Freight cluster analysis	Analysis to identify current and future locations of freight clusters.	Existing plan update
Freight policy analysis	Assessment of municipal policies on freight and goods movement.	New plan addition
Study of best practices	Report on other regional models that identify modal trends and strategies, planning practices.	Existing plan update
Performance measures	A targeted, quantitative set of regional freight performance measures and metrics.	New plan addition
Project identification framework	Established criteria and/or matrix for evaluating projects and regional priorities.	New plan addition

New plan components

- Ensuring CDOT **Statewide Freight Plan** alignment.
- Approaches to **final mile** freight movement and delivery.
- Identifying **emerging trends** and technology.



Identifying regional freight improvements

Develop freight focus areas	Identify needs and issues	Prioritize freight improvements
<ol style="list-style-type: none">1) Establish broad areas or corridors.2) Create freight-related performance measures.3) Integrate into other regional or local planning efforts.	<ol style="list-style-type: none">1) Identify key needs and issues within each focus area.2) Provide a framework for issue and project identification.	<ol style="list-style-type: none">1) Develop an initial list of planned and potential improvements.2) Develop a prioritized regional freight improvement list.

Project timeline

	2025				2026			
	Q1	Q2	Q3	Q4	Q1	Q2	Q3	Q4
Stakeholder engagement	Active	Active						
Existing conditions analysis	Active	Active	Active					
Land use, policy, and market analysis		Active	Active	Active				
Emerging trends and technology			Active	Active				
Prioritization framework			Active	Active	Active			
Implementation recommendations					Active	Active		
Plan adoption						Active	Active	

Questions & Discussion

Cole Neder
Senior Transit Planner
cneder@drcog.org

If you need digital accessibility assistance, submit a request at drcog.org/access or call 303-455-1000. Please expect a response within 72 hours (three business days).